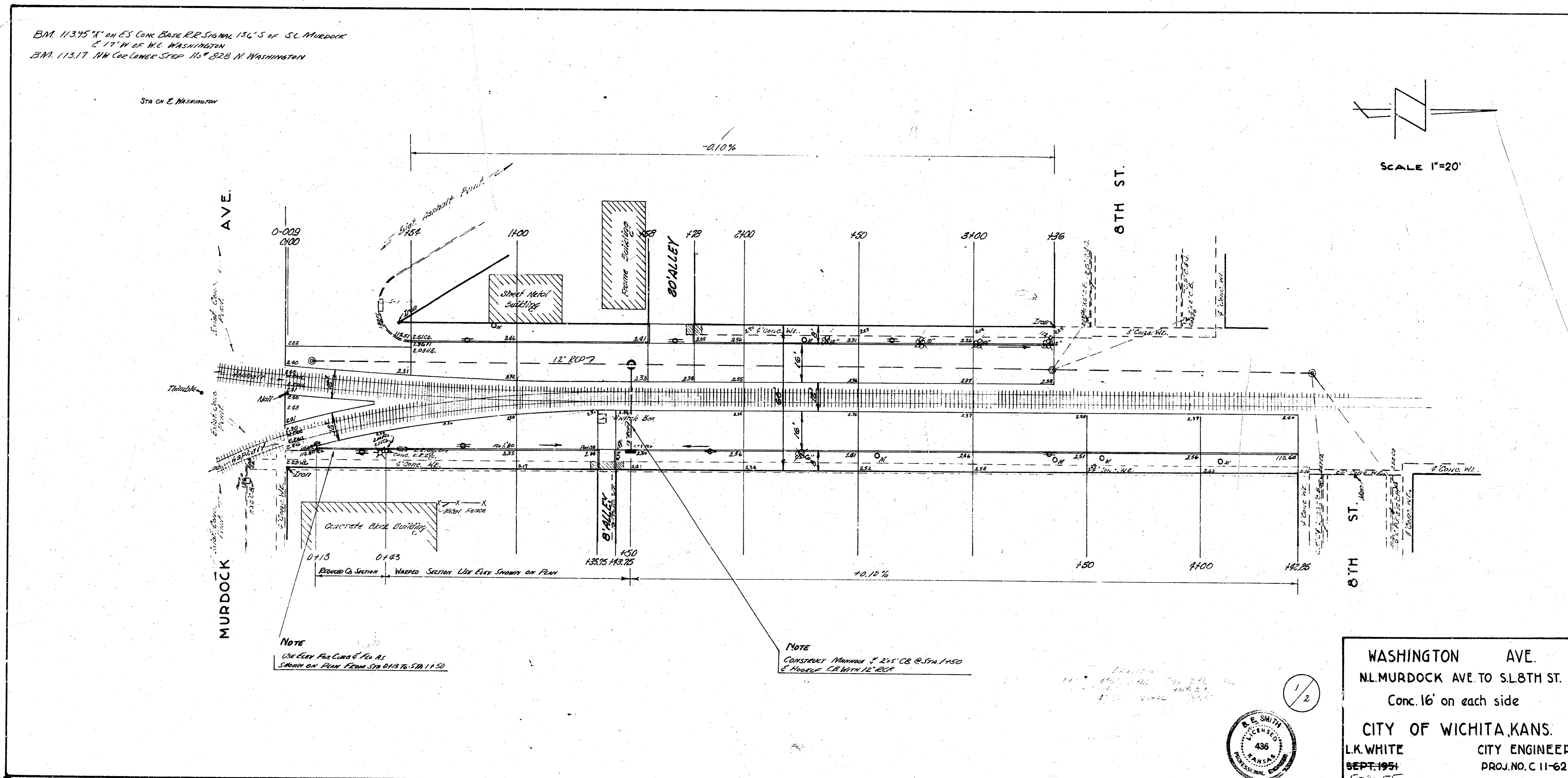
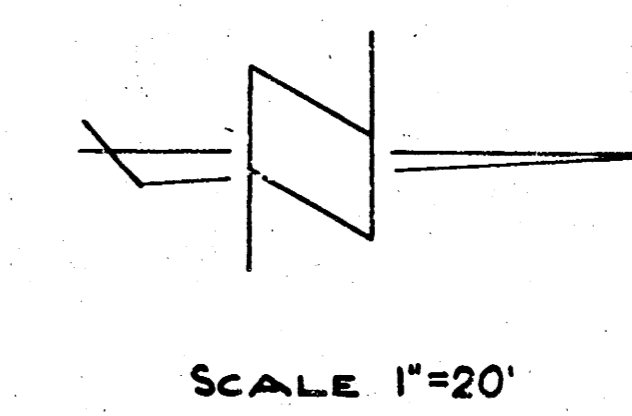
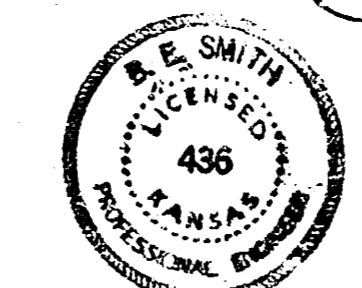


BM 11345 N on ES Long Base R.R. Signal 136' S of S.L. MURDOCK  
 5' 17" N of N.L. WASHINGTON  
 BM 11317 NW Cor. Corner Street 168' S228' N WASHINGTON

Sta on E. WASHINGTON



Survey Cont.  
 Plan CD  
 Dec. 28  
 1951



WASHINGTON AVE.  
 N.L. MURDOCK AVE. TO S.L. 8TH ST.  
 Conc. 16' on each side  
 CITY OF WICHITA, KANS.  
 L.K. WHITE CITY ENGINEER  
 SEPT. 1951 PROJ. NO. C 11-62