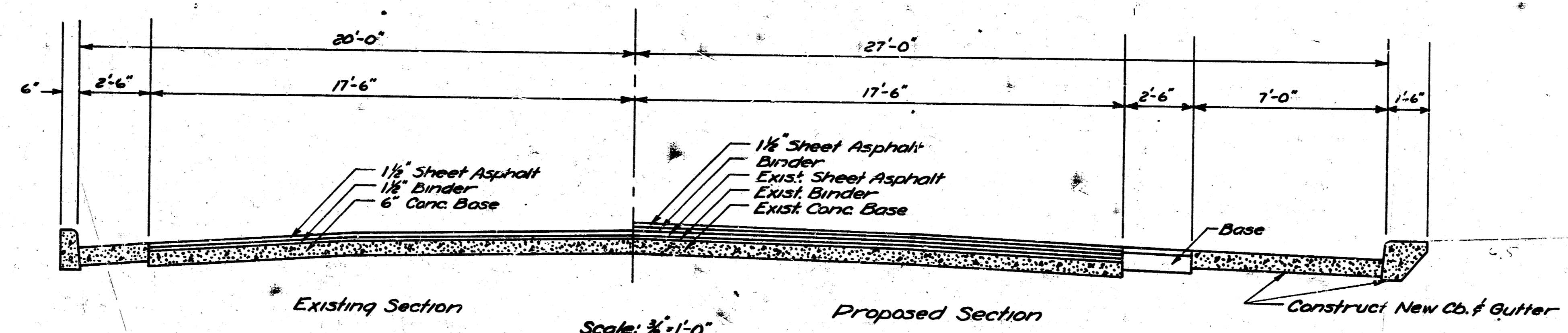
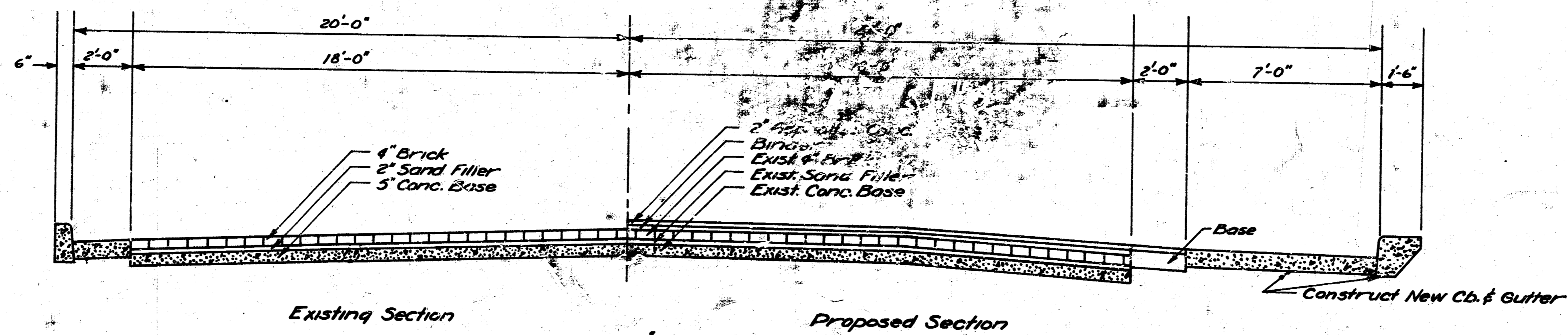


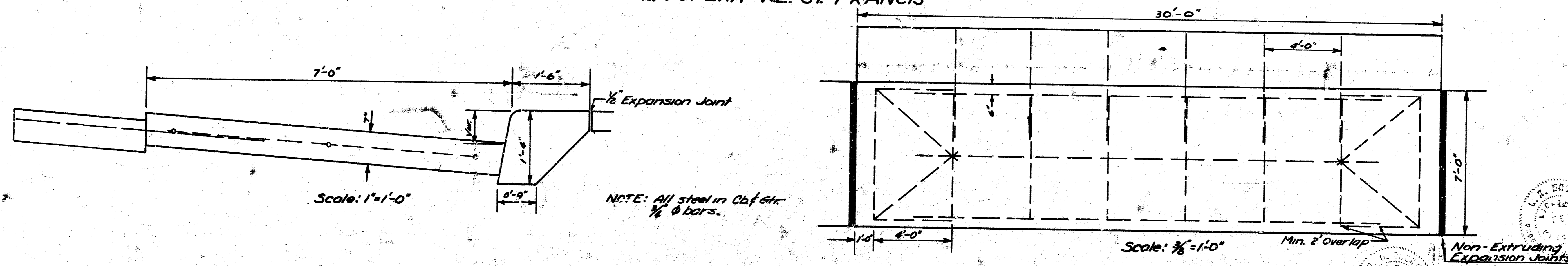
**WATERMAN ST.  
E.L. WATER-WL. ST. FRANCIS  
WIDENING & RESURFACING**



TYPICAL SECTION  
EL WATER - EL TOPEKA

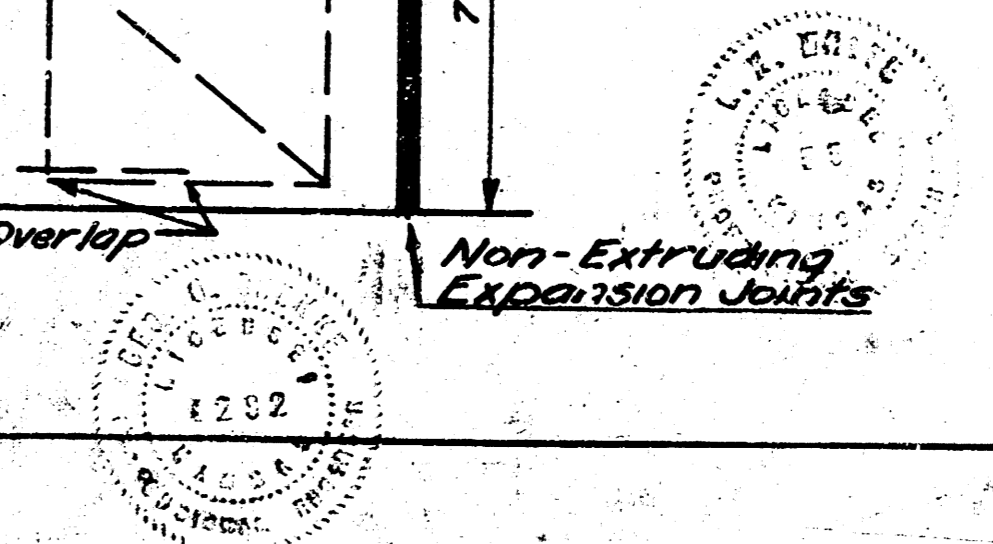


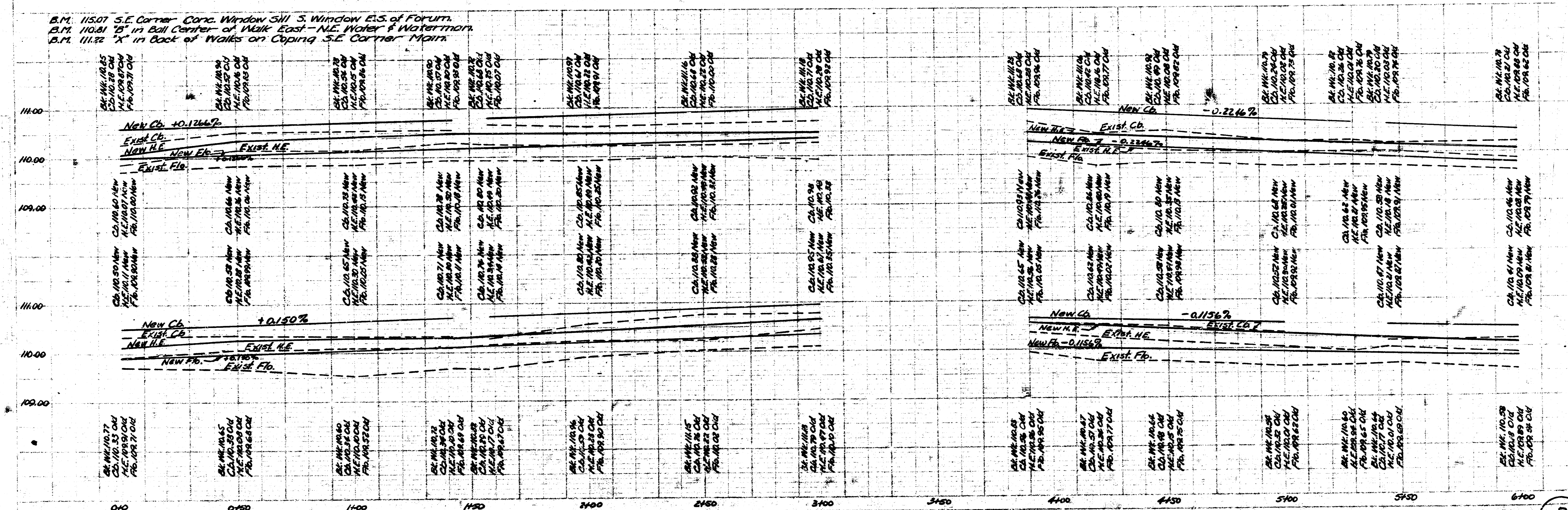
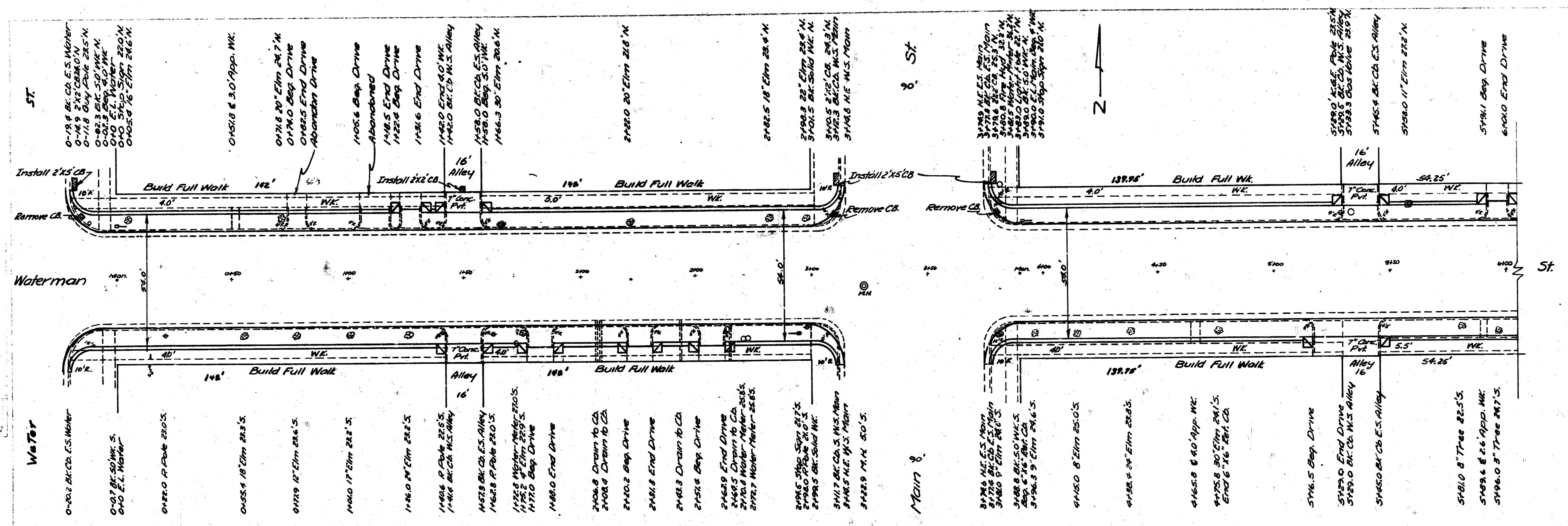
TYPICAL SECTION  
EL TOPEKA - WL ST FRANCIS



DETAILS of CURB & GUTTER

NOTE: All steel in C&G etc.  
1/2" Ø bars.





B.M. 115.07 S.E. Corner Core Window Sill S. Window E.S. of Forum.  
 B.M. 110.81 "1" in Ball Center of Walk East - NE Water & Waterman.  
 B.M. 111.22 "X" in Back of Walks on Coping S.E. Corner Main.





