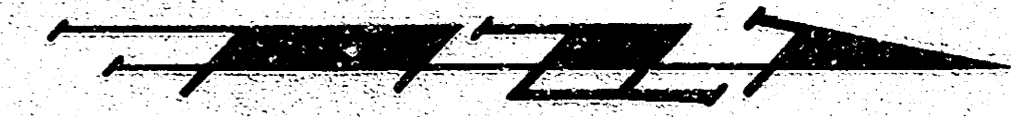
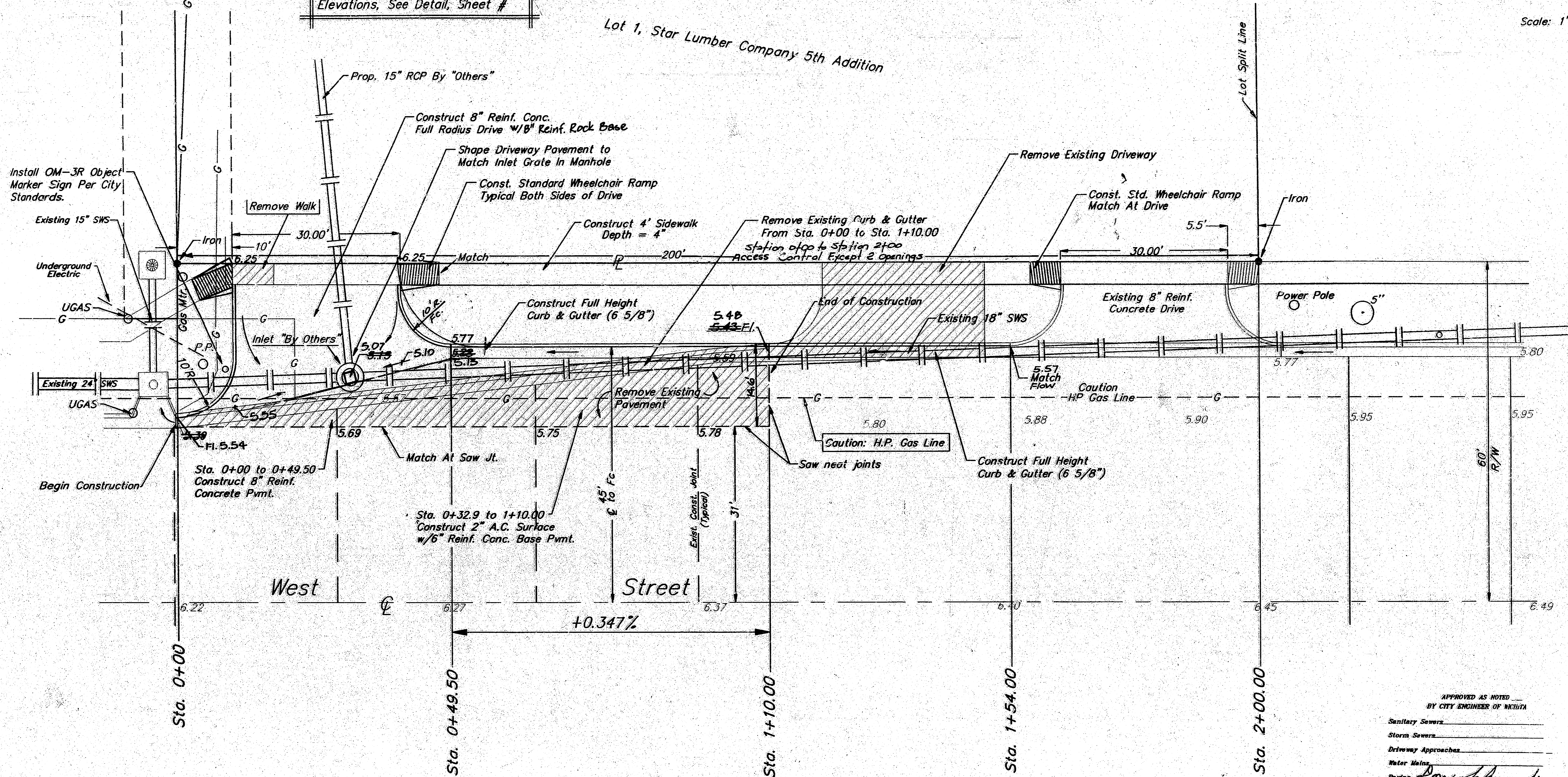


BENCH MARK: "+" at the S.W. Corner of Black Eyed Pea Property. City Datum Elev. = 116.89
 TEMPORARY BENCH MARK: Nail & Cap Located 160' West of the S.E. Corner Star Lumber Company 5th Addition. Elev. = 118.29

Note: For Joint Layout and Drive Elevations, See Detail, Sheet #



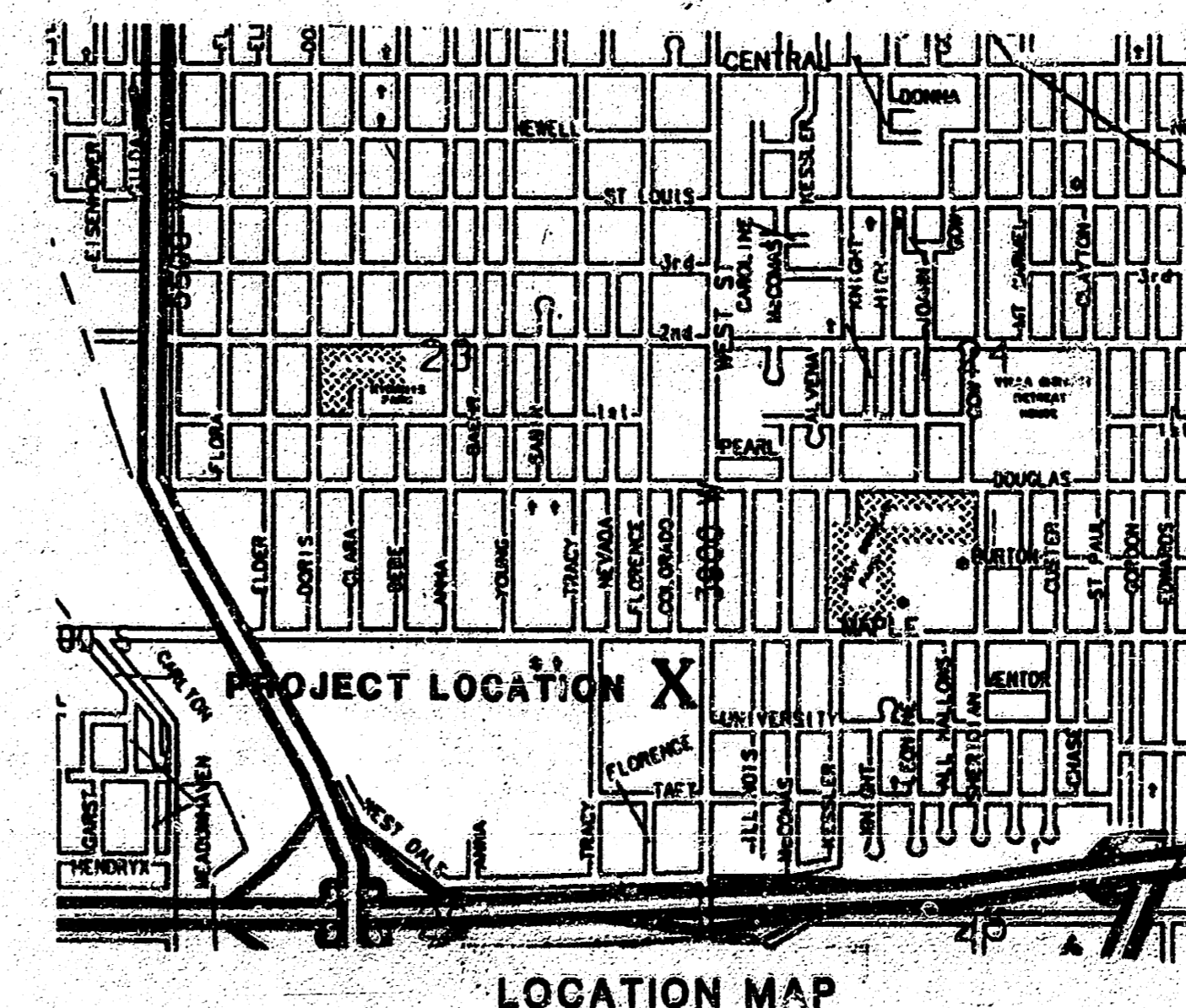
Scale: 1" = 10'



GENERAL NOTES

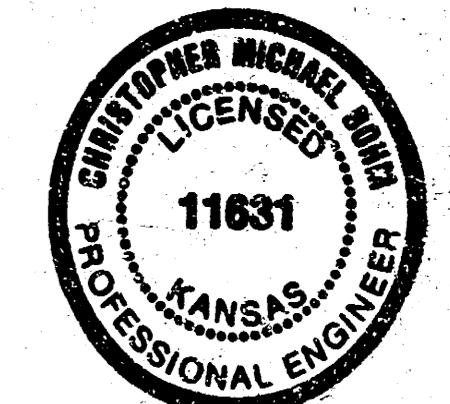
- Utility service lines, poles, valve boxes, meters, etc. are to be adjusted as necessary by others prior to construction unless the plans specifically call for their adjustment by the Contractor or unless the plans specifically identify a utility to be adjusted by its owner during construction. Existing utilities and their location, as shown on the plans, represent the best information obtainable for design. The contractor will be required to work around existing utilities within the right-of-way which do not conflict with proposed construction.
- The Contractor shall be responsible for preserving property irons. The Contractor will be required to re-establish any property irons which are damaged or destroyed by his construction operations. Such irons shall be re-established by a licensed land surveyor in accordance with state laws.
- Removal of existing concrete parking lot pavements, asphalt parking lot pavements, asphalt driveway pavements and/or asphalt sidewalk pavements will be paid for as square feet of walk and drive removed.
- Rubble from the removal of miscellaneous structures and excess excavation which is to be wasted shall be disposed of on sites to be provided by the Contractor. These sites shall be approved by the Engineer as to suitability, appearance and site location. Locations that, in the opinion of the Engineer, will leave an unsightly appearance will not be approved. All disposal sites must be approved by the Kansas Department of Health and Environment. Material either stockpiled or disposed of in a flood plain would require a Kansas State Board of Agriculture permit. Any material dumped in waters of the United States or wetlands is subject to U.S. Corps of Engineers permitting regulations. Any material buried or stockpiled beyond approved construction limits would require additional archaeological investigations unless buried in a previously approved borrow location, alternate types of subgrade treatment. The type bid by the successful bidder will be the type of subgrade treatment used to construct the project.

For Pavement Marking Plan See Sheet #3



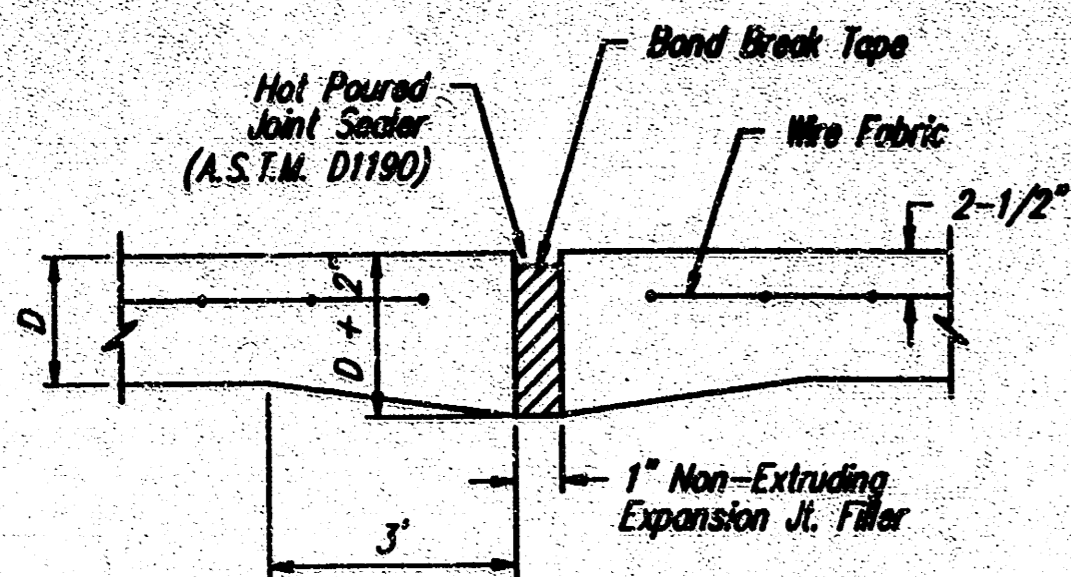
APPROVED AS NOTED BY CITY ENGINEER OF WICHITA
 Sanitary Sewers _____
 Storm Sewers _____
 Driveway Approaches _____
 Water Mains _____
 Paving _____

NOTE TO CONTRACTOR:
 Inspection and testing for this project is to be provided by a Licensed Consulting Engineering Firm under contract with the Owner/Developer. Said inspection is to be in accordance with the City of Wichita standard construction engineering practices and certified by a Licensed Professional Engineer. No work shall be performed in dedicated easements or public right-of-way by the Contractor without such inspection nor shall any work be commenced without written authorization by the City Engineer.



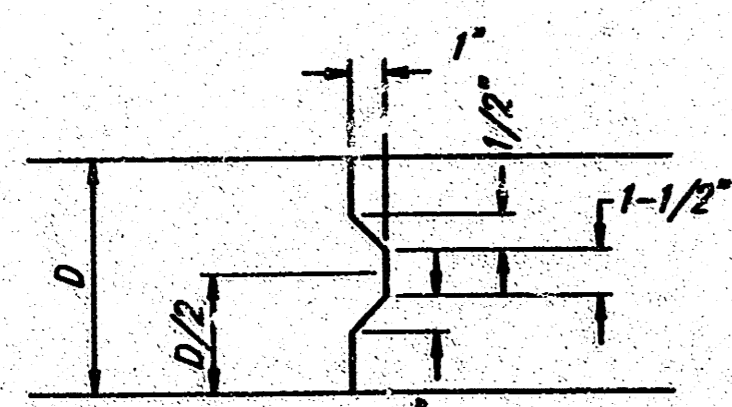
WEST ST. DECEL LANE TO SERVE QUIK TRIP STORE #396				REV.
BAUGHMAN COMPANY P. A. ENGINEERING & SURVEYING 316/282-7271 • 315 ELLIS • WICHITA, KANSAS 67211				1
PROJECT NUMBER 065PPP				OF 3
DESIGN N.B.W.	DRAWN B.P.	APPROVED DATE 9/91	SCALE NOTED	
Revised as built 12-20-91 TCR				

FILMED FROM THE BEST AVAILABLE COPY

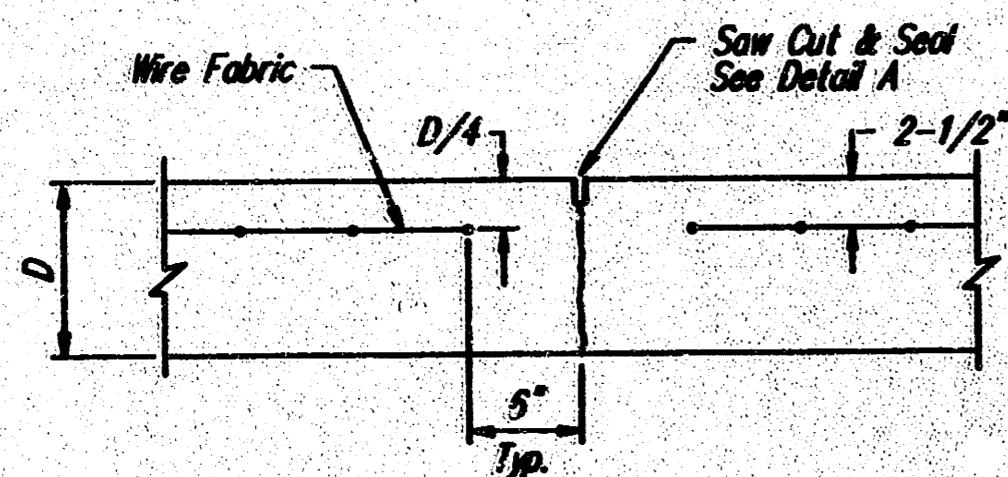


EXPANSION JOINT

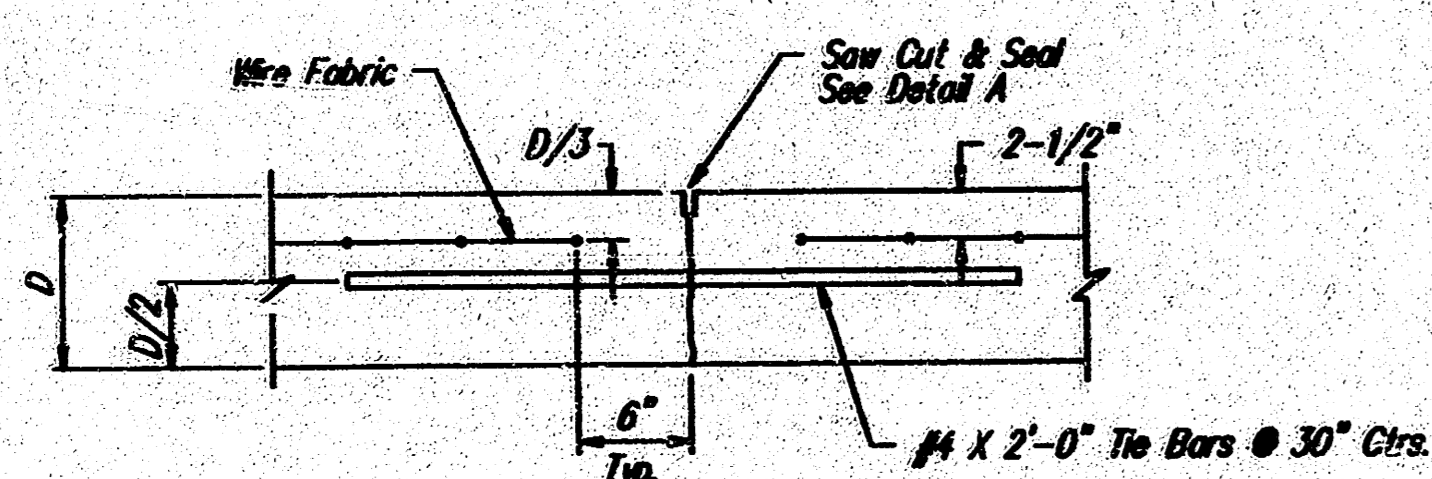
NOTE: Extra Thickness to be Subsidiary to Price of Square Yards Pavement



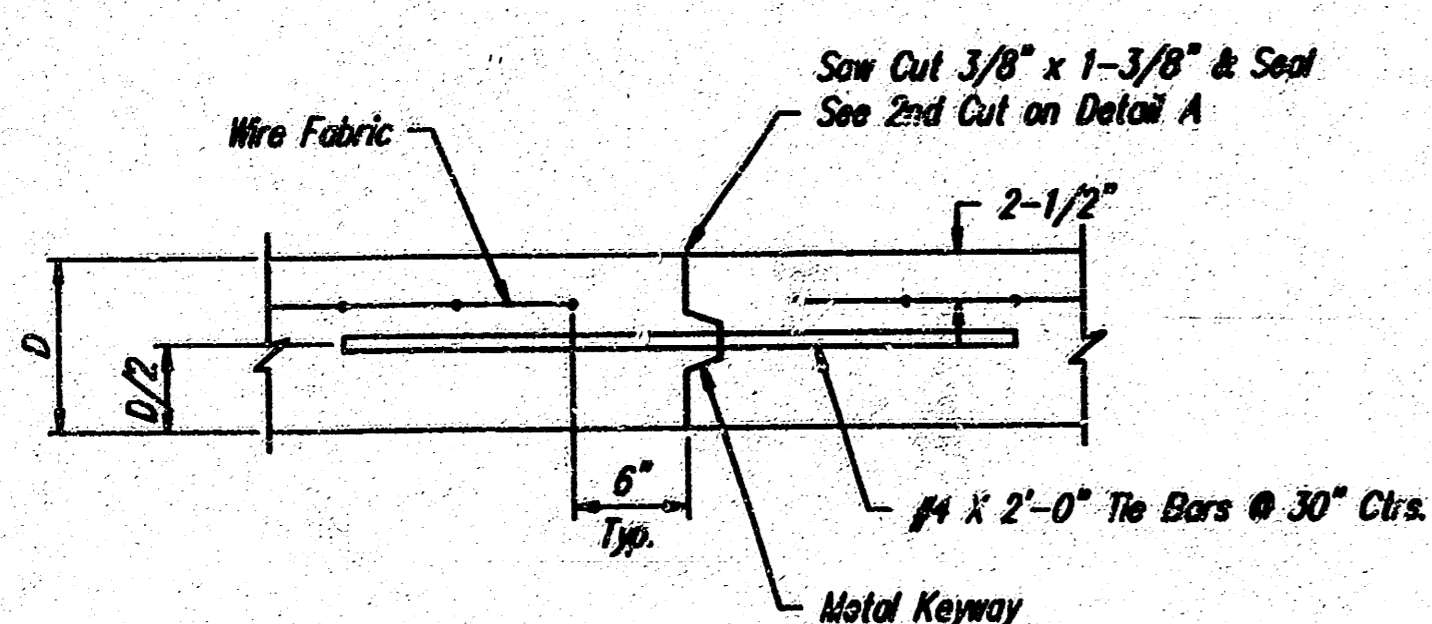
KEYWAY DETAIL



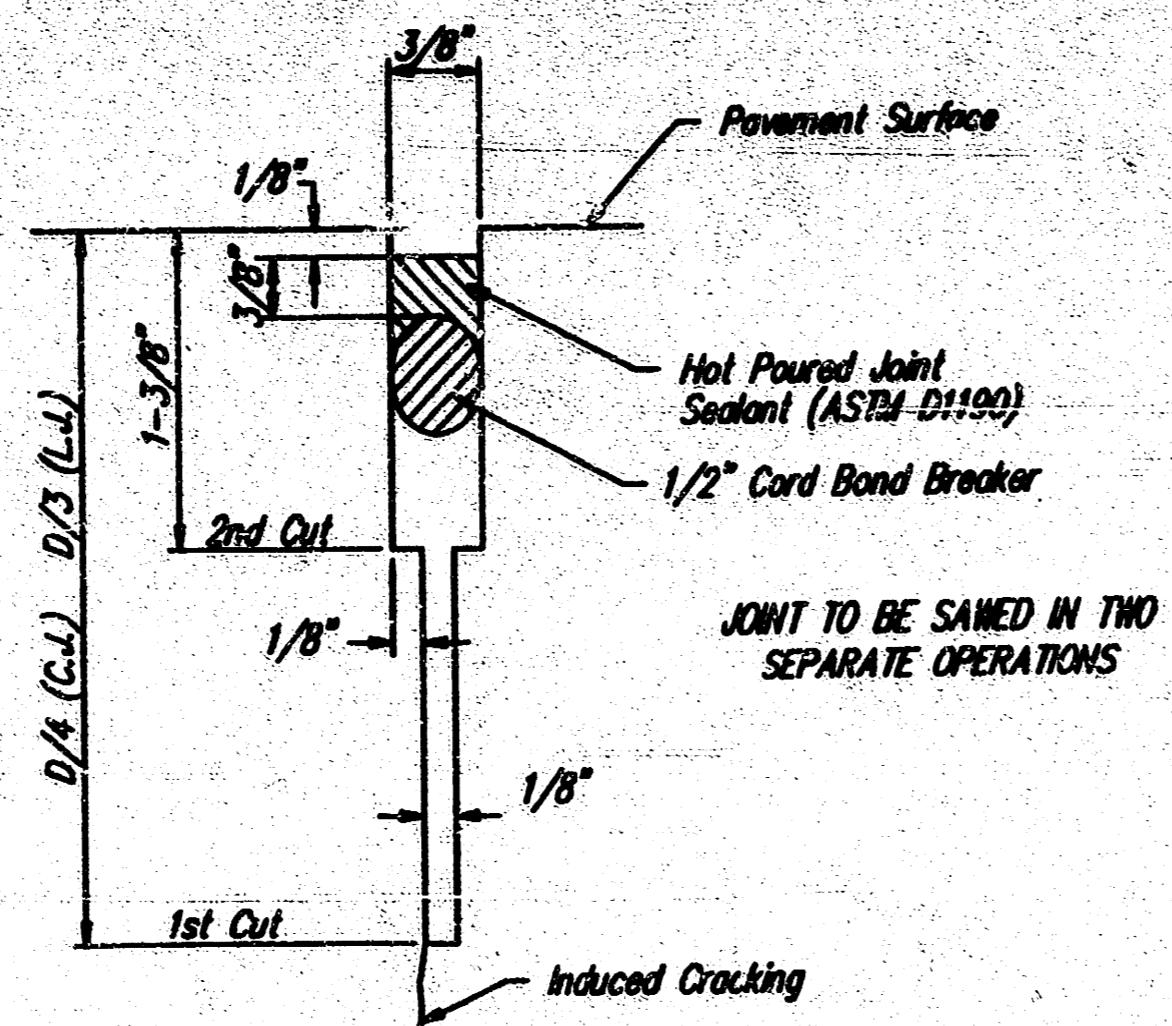
CONTRACTION JOINT DETAIL (C.J.)



LONGITUDINAL JOINT DETAIL (L.J.)



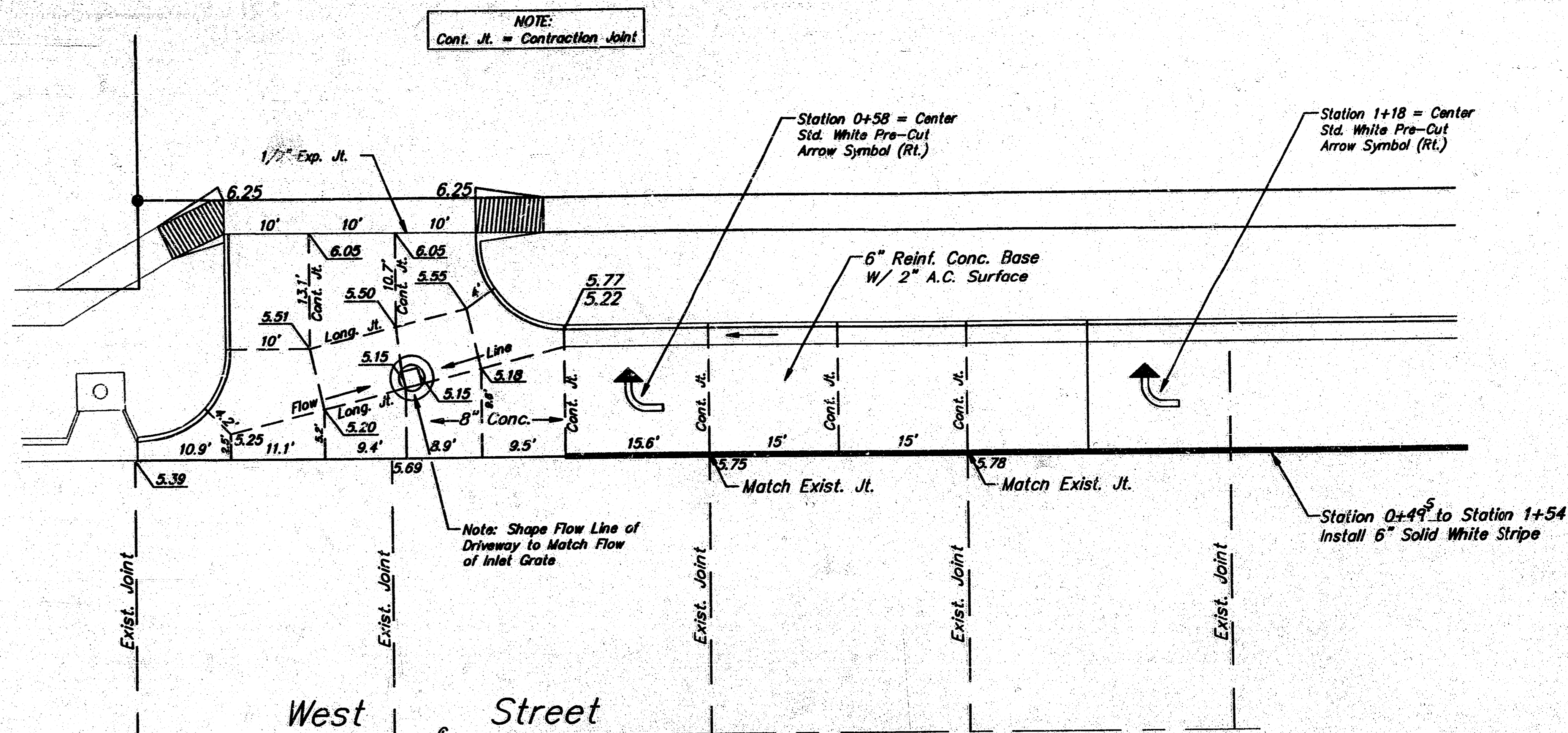
LONGITUDINAL JOINT DETAIL (L.J.)



SAW JOINT DETAIL

JOINT TO BE SAWS IN TWO SEPARATE OPERATIONS

Induced Cracking



DECELERATION LANE JOINT LAYOUT DETAIL AND TRAFFIC MARKING PLAN

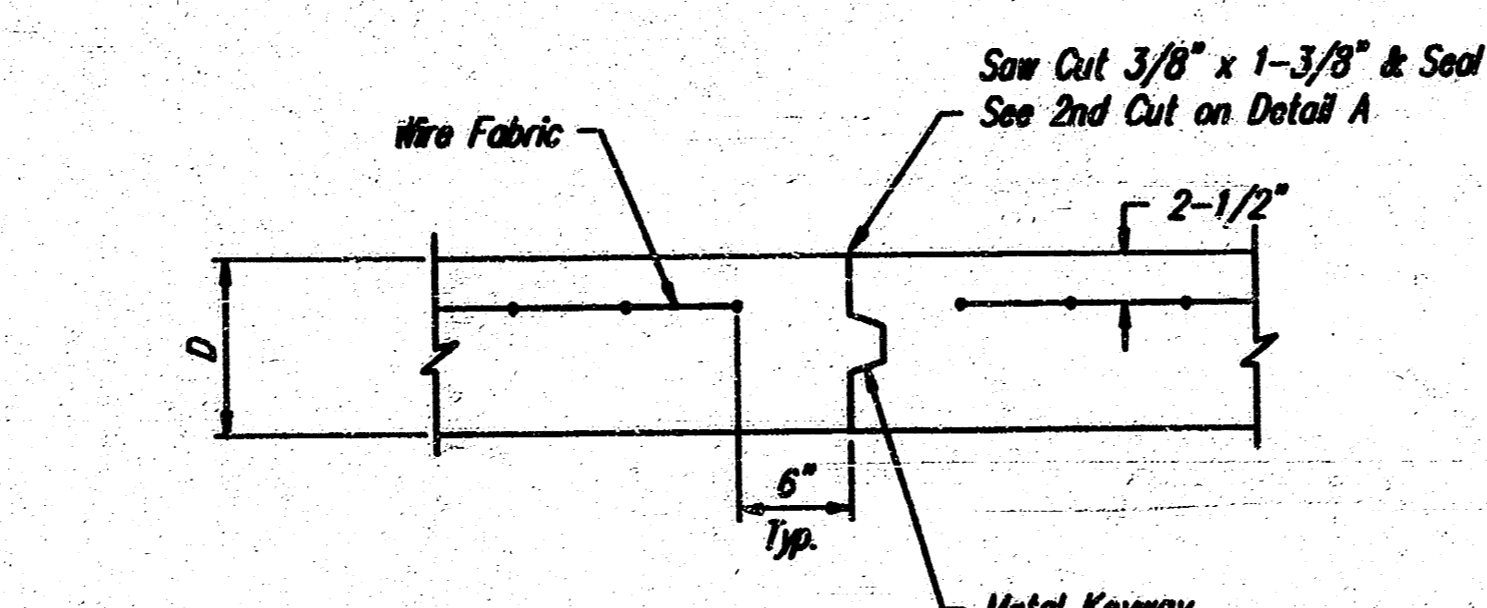
NOTE: Cont. Jt. = Contraction Joint

PAVEMENT MARKING NOTES

All pavement markings shall conform to the current standards set forth in the MANUAL OF UNIFORM TRAFFIC CONTROL DEVICES.

All pavement markings shall be Cold Laid Plastic Type & Pre Cut Standard Symbol Type meeting the required specifications. Install and Cold Roll as per standard installation procedure for Cold Laid Pavement Markings.

Where new pavement (Asphaltic Concrete) is being constructed, the pavement markings must be installed while the new wearing surface is still warm (at least 130° F.) and rolled, so as to lay the pavement markings into the new pavement.



OPTIONAL CONTRACTION CONST. JOINT (C.J.) (ALTERNATE C.J.)

WEST STREET DECELERATION LANE JOINT PLAN AND PAVEMENT MARKING DETAILS				
BAUGHMAN COMPANY P. A. SURVEYING & ENGINEERING 316/282-7271 • 315 ELLIS • WCHTL KANSAS 67211				REV.
PROJECT NUMBER				SHEET
065PPP				3
DESIGN	DRAWN	APPROVED	DATE	SCALE
C. Bohm	C. Bohm		Sept. 1991	None

FILMED FROM THE BEST AVAILABLE COPY

