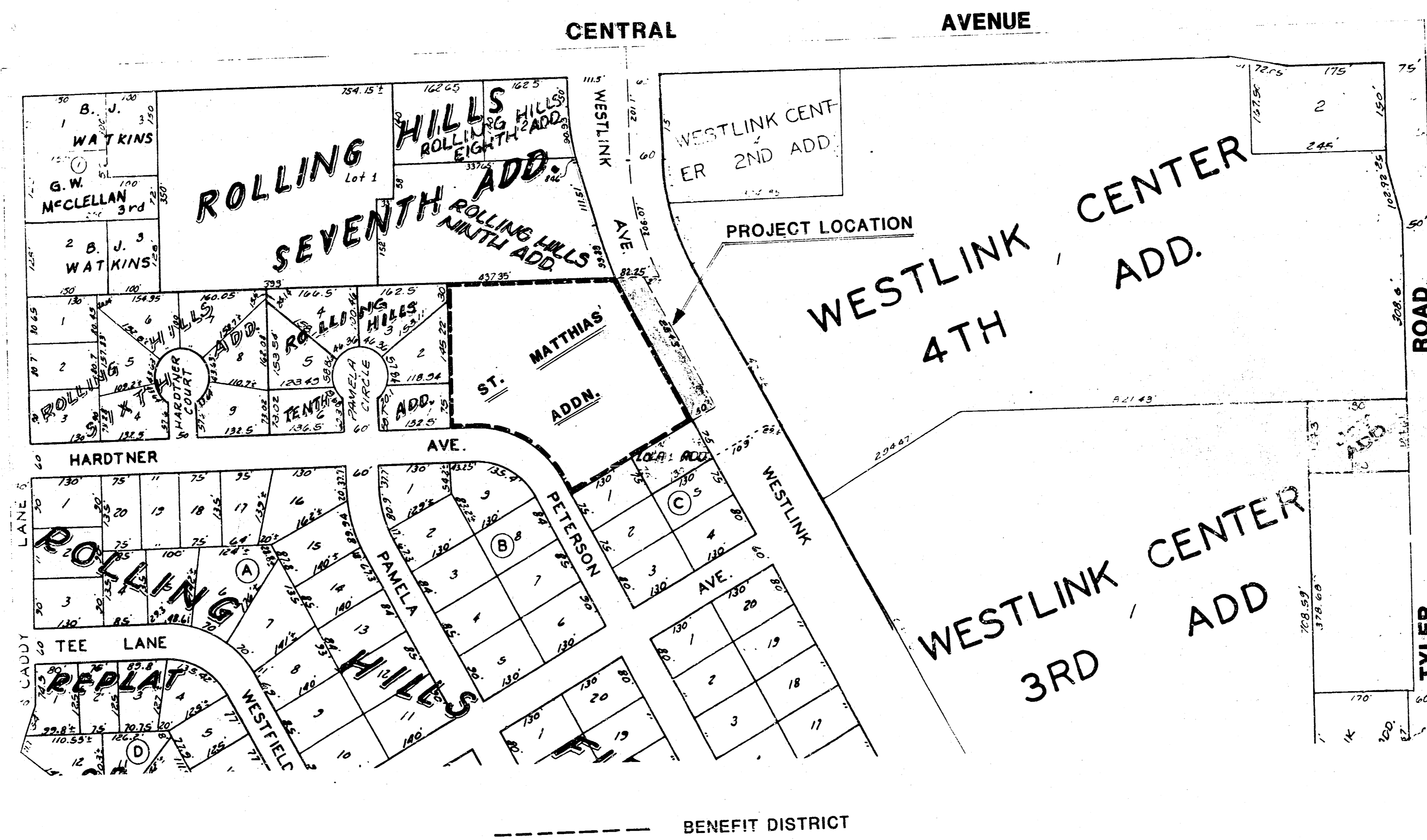
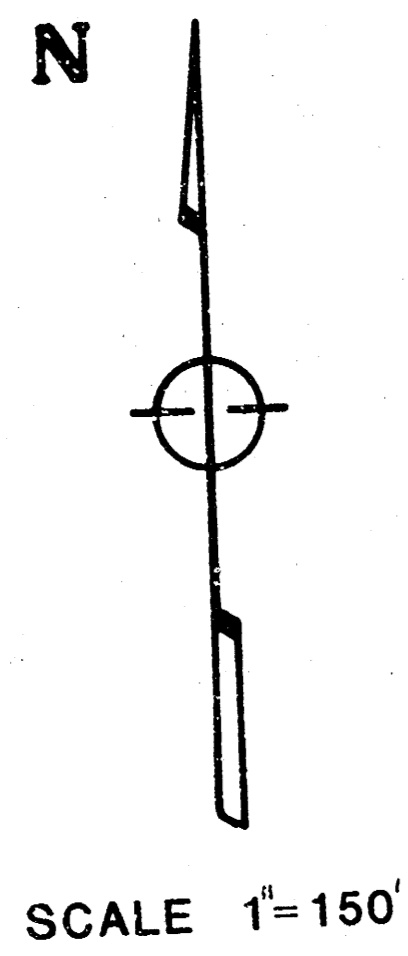


STREET IMPROVEMENTS FOR WESTLINK AVENUE

**FROM THE N.L. OF LOT 1, LOLA ADDITION TO
THE S.L. OF LOT 1, ROLLING HILLS NINTH ADDITION**

PROJECT NO.

472-76-245-81485-000-000-001



GENERAL NOTES

The Contractor shall be responsible for preserving the property irons. The contractor shall be required to re-establish any property irons which are damaged or destroyed by his construction operations. Such irons shall be re-established by a licensed land surveyor or a professional engineer in accordance with state laws.

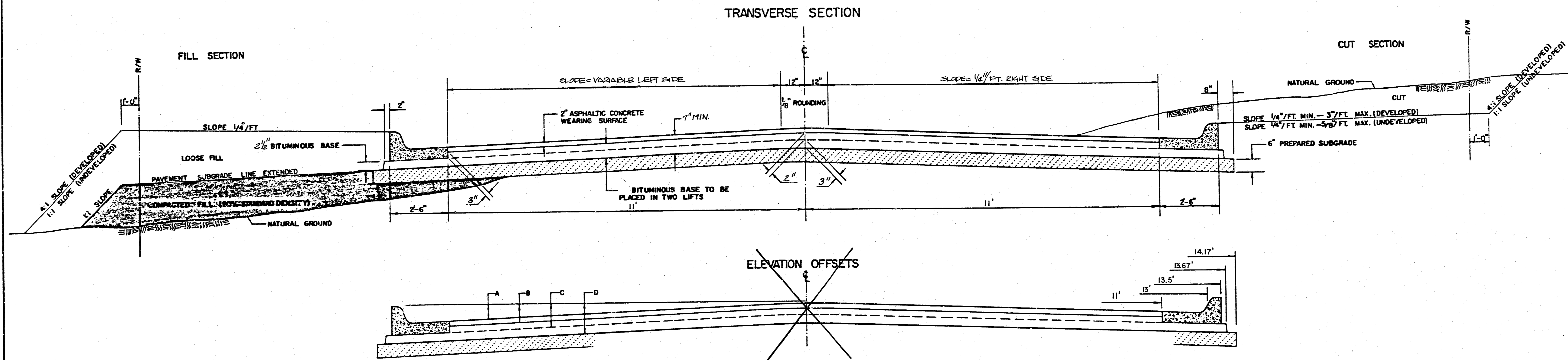
The contractor shall contact the utility companies in order to verify any underground lines they may have in the construction vicinity prior to beginning with construction of the project.

No more than 2 concrete driveways shall be constructed on this project. The contractor shall contact Carrol Little John Law-Kingdon Company, (268-0230) to verify the location and widths of the driveway construction to be performed on this project. The driveways shall be ramp-type driveways unless otherwise directed by the Engineer.

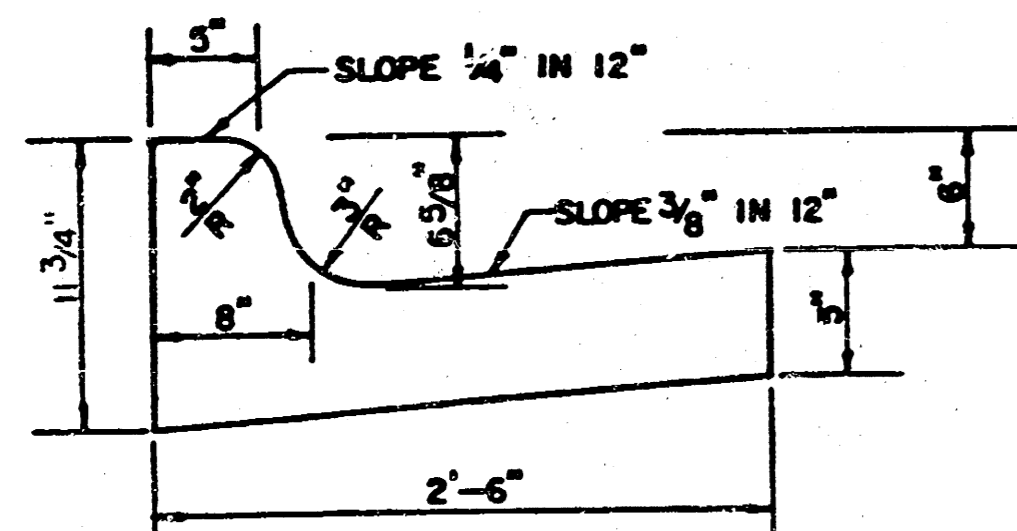
**CITY OF WICHITA, KS
MICHAEL E. LINDEBAK — CITY ENGINEER**

BENCH MARK: "a" Cut in top of curb, South of East P.L., Rolling Hills 10th Addition. Elev.= 142.39 City Datum.

TYPICAL 27' PAVEMENT DETAILS



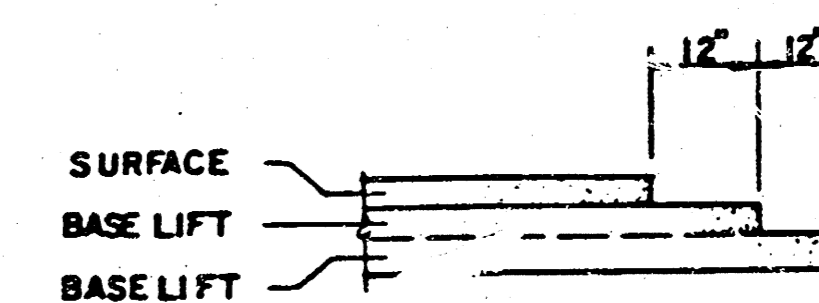
COMBINED CURB & GUTTER



GENERAL NOTES

- 1) THE ASPHALTIC CONCRETE PAVEMENT BETWEEN THE COMBINED CURB AND GUTTER SHALL BE PAID AS SQUARE YARDS OF 7" ASPHALTIC CONCRETE (5" BITUMINOUS BASE).
- 2) THE BITUMINOUS BASE UNDER AND BEHIND THE COMBINED CURB AND GUTTER SHALL BE PAID AS SQUARE YARDS OF 5" BITUMINOUS BASE.
- 3) A TACK COAT OF EMULSIFIED ASPHALT (SC-1H OR CSS-1H) SHALL BE APPLIED AT AN APPROXIMATE RATE OF 0.05 GALLONS PER SQUARE YARD BETWEEN EACH LIFT OF ASPHALTIC MATERIAL.
- 4) BITUMINOUS BASE AND ASPHALTIC CONCRETE HEARING SURFACE SHALL BE PLACED WITH A LAYDOWN MACHINE HAVING AUTOMATIC CONTROLS FOR LINE AND GRADE.
- 5) CONSTRUCTION JOINTS IN EACH LIFT SHALL BE STAGGERED A MINIMUM DISTANCE OF ONE (1) FOOT FROM JOINTS IN PRECEDING LIFTS AND PLACED SO THAT A JOINT WILL BE CONSTRUCTED ON THE CENTERLINE OF THE TOP LIFT.
- 6) CONTRACTOR TO BID ONLY ONE SUBGRADE TREATMENT ALTERNATE WHEN ALTERNATES ARE PROVIDED IN THE PROPOSAL AND CONTRACT. THE ALTERNATE CHOSEN BY THE SUCCESSFUL BIDDER SHALL BE USED IN CONSTRUCTING THIS PROJECT.

TRANSVERSE CONSTRUCTION JOINTS

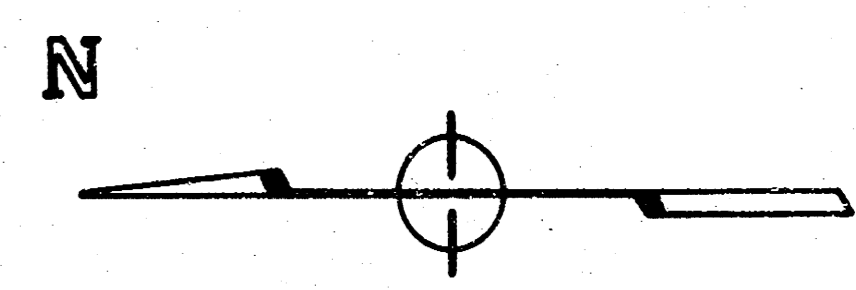


TRANSVERSE CONSTRUCTION JOINTS SHALL BE CONSTRUCTED IN FLEXIBLE BASE PAVEMENTS AT LOCATIONS WHERE PAVEMENT JOINTS EXISTING FLEXIBLE BASE PAVEMENT AS SHOWN BY THE DETAIL. ALL COSTS ASSOCIATED WITH THE CONSTRUCTION OF THE TRANSVERSE JOINT SHALL BE INCLUDED IN THE BID PRICE FOR SQUARE YARDS 7" ASPHALTIC CONCRETE (5" BITUMINOUS BASE).

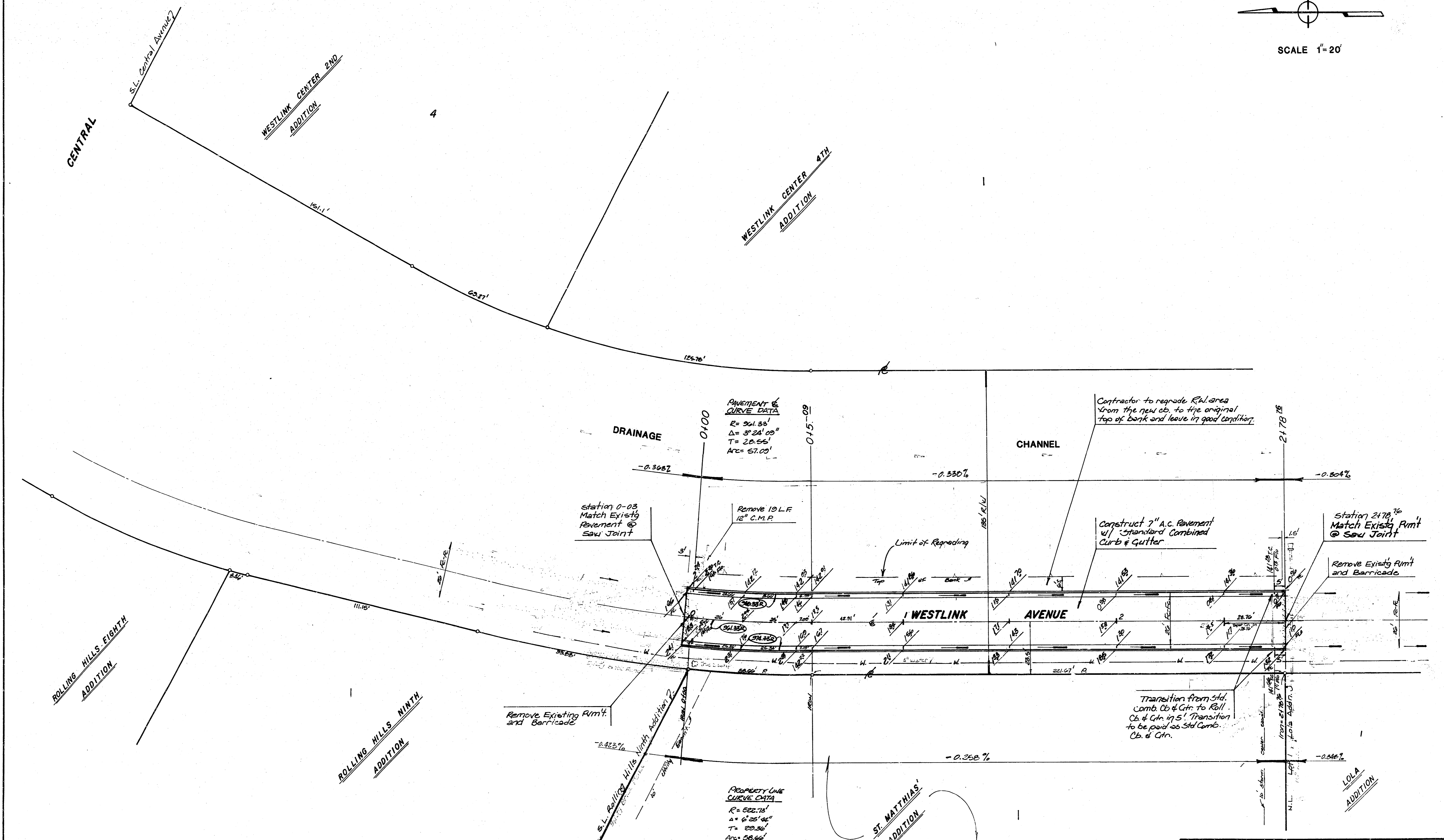
7 INCH RESIDENTIAL ASPHALTIC CONCRETE
PAVEMENT WITH 5 INCH BITUMINOUS BASE
CITY OF WICHITA, KANSAS
472-76-245-81485-000-000-001

2/4

BENCH MARK: "D" CUT IN TOP OF CURB, SOUTH OF EAST 12, ROLLING HILLS 10TH ADDITION. ELEV. = 142.33 CITY DATUM



SCALE 1" = 20'



CURVE DATA BASED ON CENTER LINE

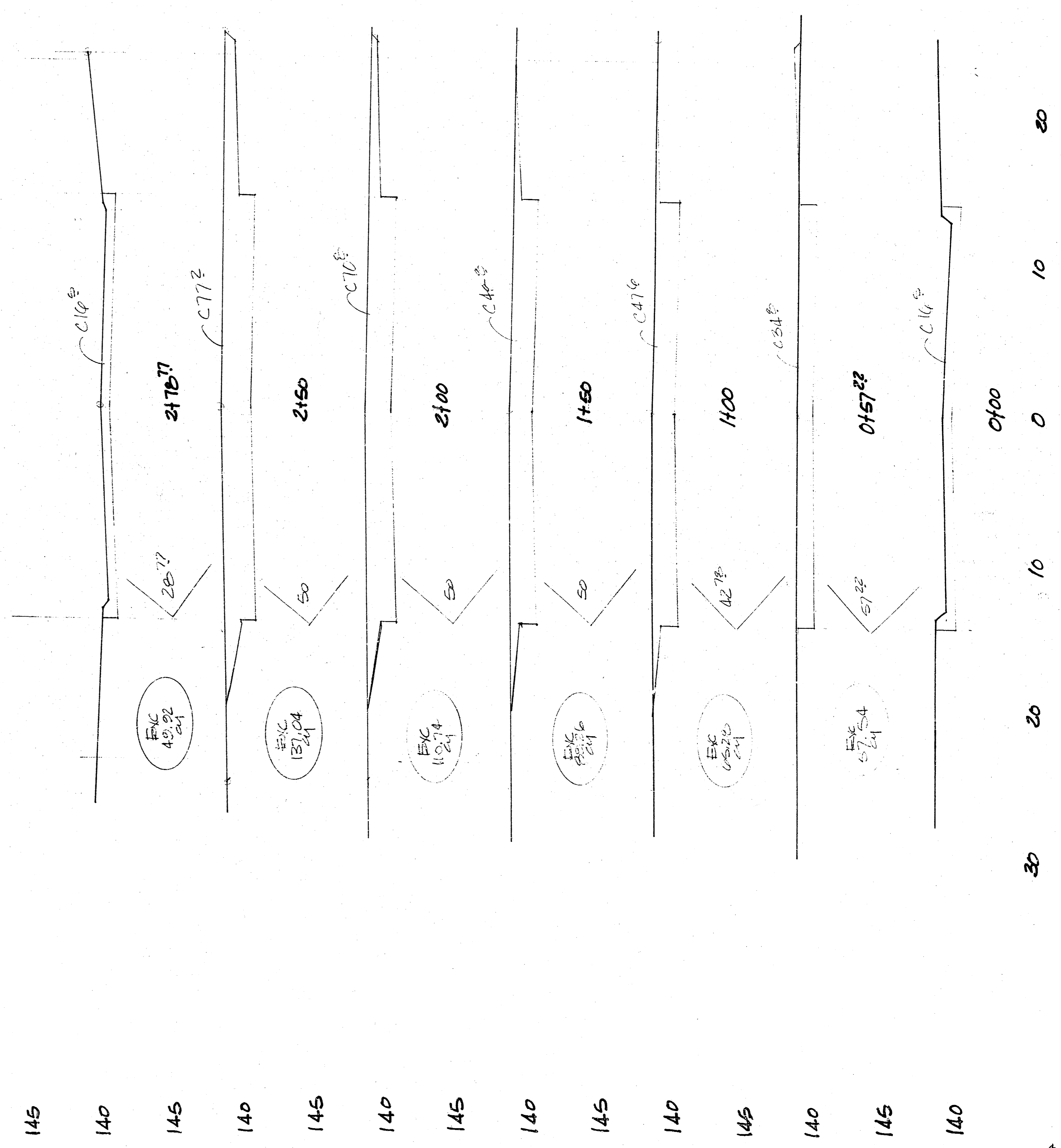
Radius = 261.35' Δ = 3°24'00" T = 28.55' Arc = 57.00' L.C. = 57.00' Del(P) = 1.7880 min.

Station	Arc	Chord Length	Chord B'Lt.	Deflection	Total Deflection
0+00 RC.	-	-	-	-	0° 00' 00"
0+25	25'	24.45'	25.65'	0° 44' 42"	0° 44' 42"
0+50	25'	24.45'	25.65'	0° 44' 42"	1° 29' 24"
0+57.00 RT.	7.00'	6.93'	7.23'	0° 12' 40"	1° 42' 04"

PROPERTY LINE CURVE DATA
 R = 522.75'
 Δ = 6° 25' 44"
 T = 29.36'
 Arc = 58.66'

Earthwork quantities
 Excavation = 509.6 c.y.
 7.10% 61.0 c.y. Compacted Fill = 0 c.y.
 Total 560.6 c.y.

WESTLINK AVENUE
 FROM THE N.L. OF LOT 1, LOLA ADDITION TO THE S.L. OF LOT 1, ROLLING HILLS NINTH ADDITION
CITY OF WICHITA, KS
 PROJECT NO. 472-76-245-81485-000-000-001



DATE TESTED
 ENCLOSURE: SEE BOOK