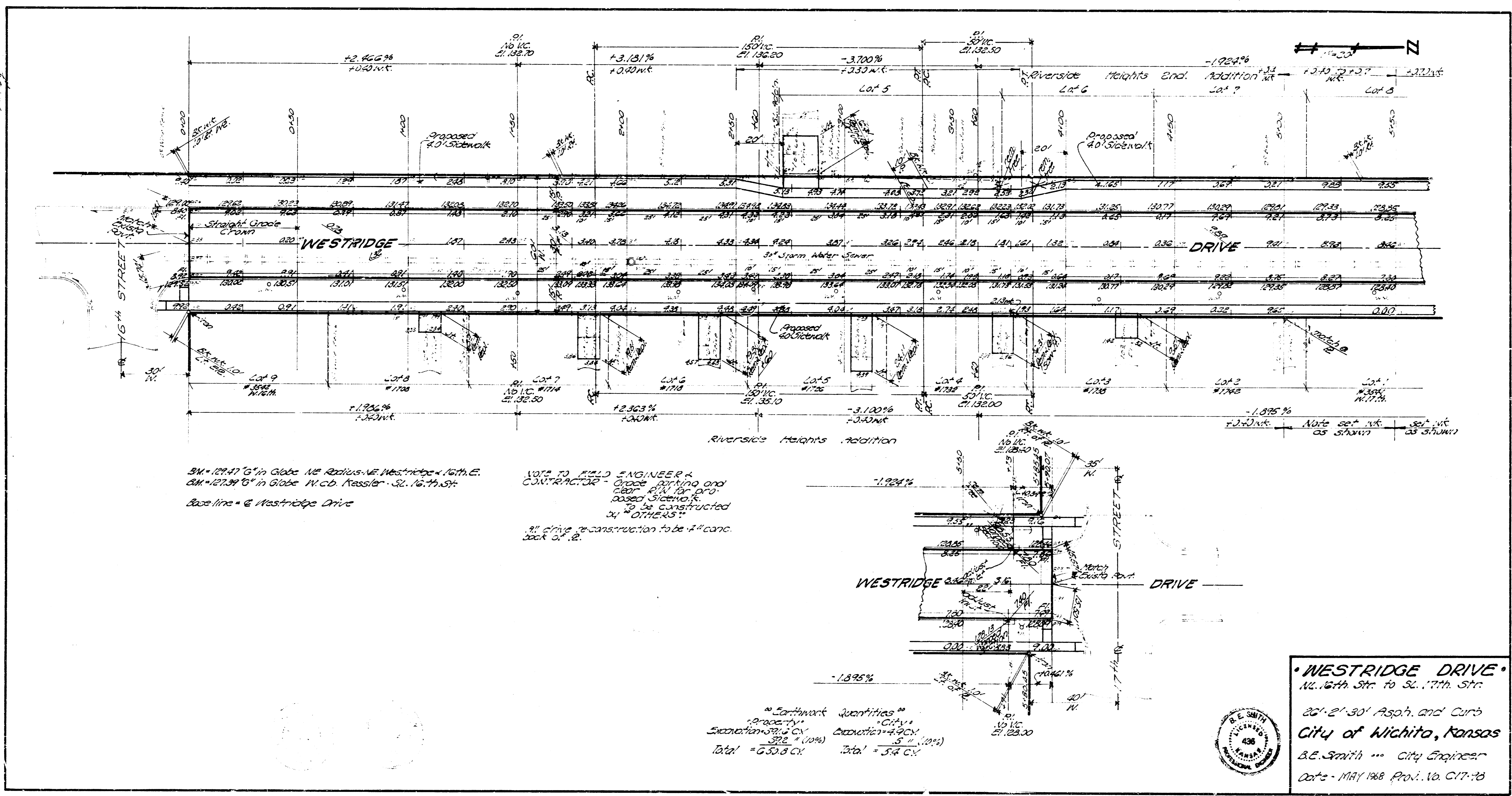
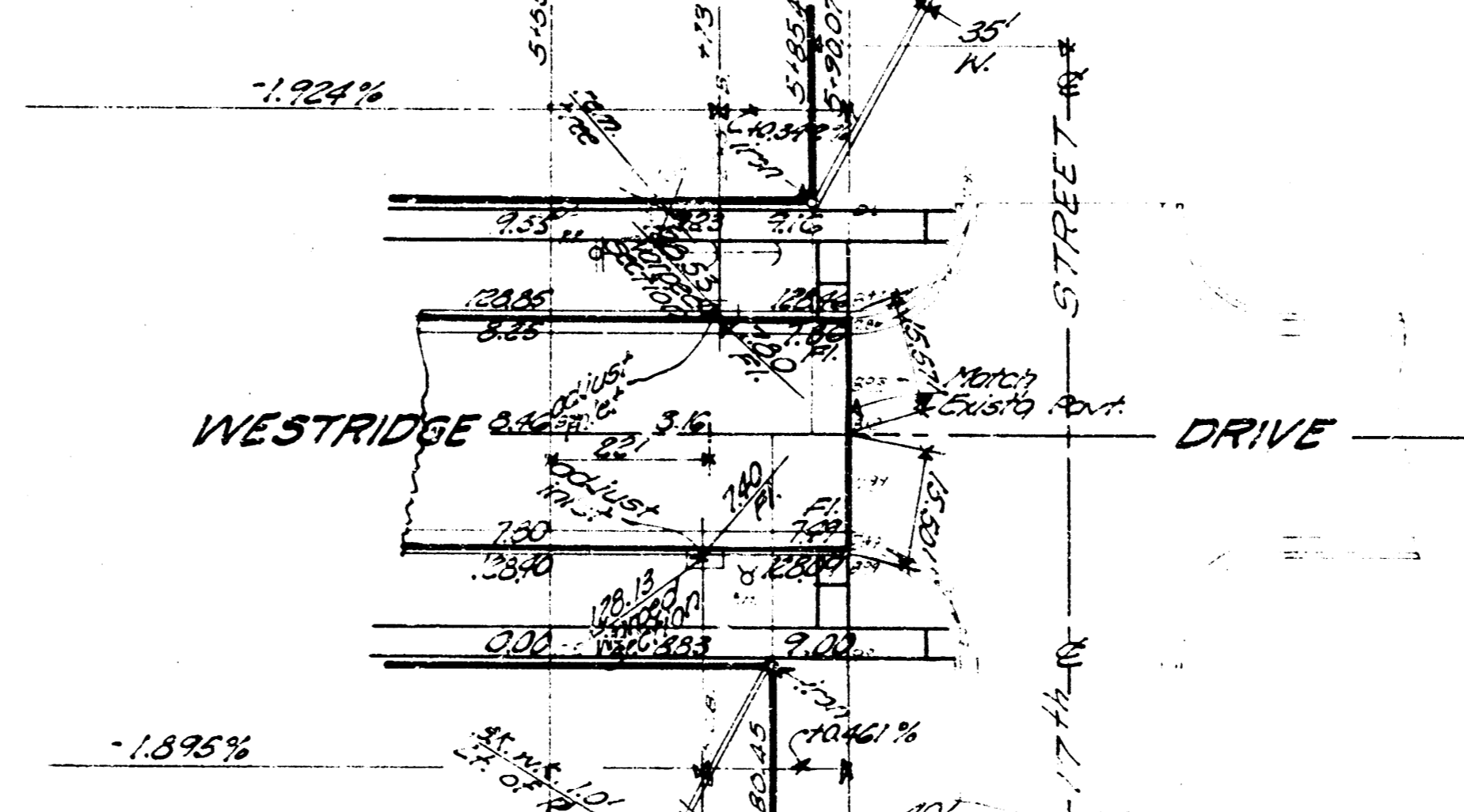


1/2" = 10' HORIZ.
1" = 1' VERT.



BM = 127.47' G in Globe NE Radius - NE Westridge - North E.
 CM = 127.94' G in Globe NW CD. Kessler - S. 16th St.
 Base line = @ Westridge Drive

NOTE TO FIELD ENGINEER & CONTRACTOR:
 Grade printing and clear pin for proposed sidewalk to be constructed as "OTHERS".
 If drive reconstruction to be 7" conc. back of 2."



Earthwork Quantities
 Excavation = 372' (10%)
 Total = 650.8 CY
 City Excavation = 4.9 CY
 Total = 5.4 CY



WESTRIDGE DRIVE
 N. 16th St. to S. 17th St.
 20' - 2' - 30" Asphalt and Curb
 City of Wichita, Kansas
 B.E. Smith - City Engineer
 Date - MAY 1988 Proj. No. C17-18