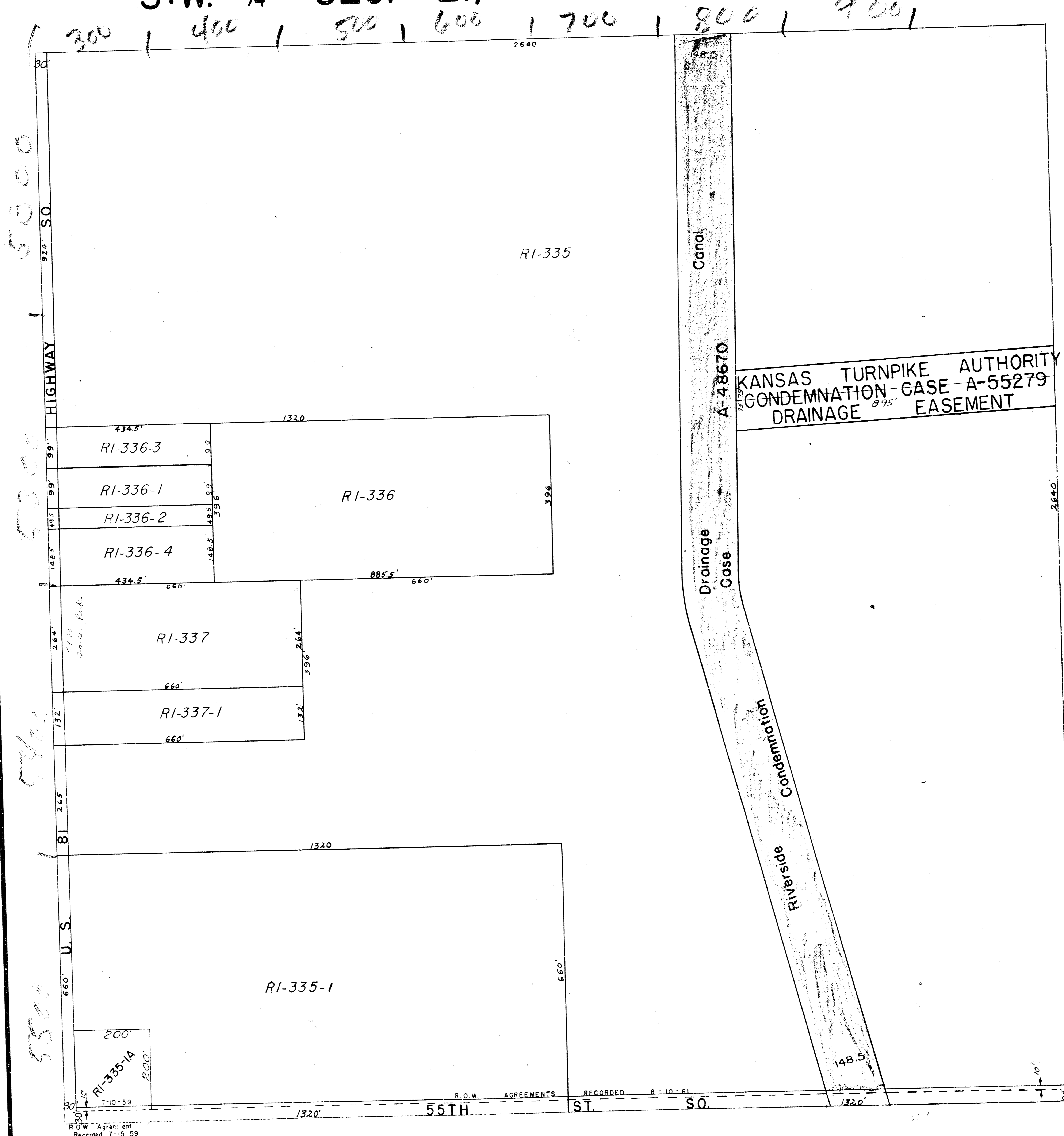


9-89

S.W. 1/4 SEC. 21, TWP. 28S. R. 1 E.

9-89

RI
84



300 | 400 | 500 | 600 | 700 | 800 | 900

5000
5300
5400
5500

30'
92.4' SO.
HIGHWAY
99'
99'
148.5'
264'
132'
265'
8'
U.S.
660'
30'

2640

48.5'

RI-335

Canal

A-48670

KANSAS TURNPIKE AUTHORITY
CONDEMNATION CASE A-55279
DRAINAGE EASEMENT

434.5'
RI-336-3
1320
9.9'
RI-336-1
RI-336-2
RI-336-4
434.5'
660'
885.5'
660'
326'

264'
RI-337
660'
396'
264'
132'
RI-337-1
660'

1320
RI-335-1
660'
200'
RI-335-1A
200'
7-10-59
R.O.W. Agreement
Recorded 7-15-59

Drainage Case

Condemnation Easement

148.5'

1320' 55TH ST. SO. 1320'

Recorded 7-15-59

RECORDED 8-10-61