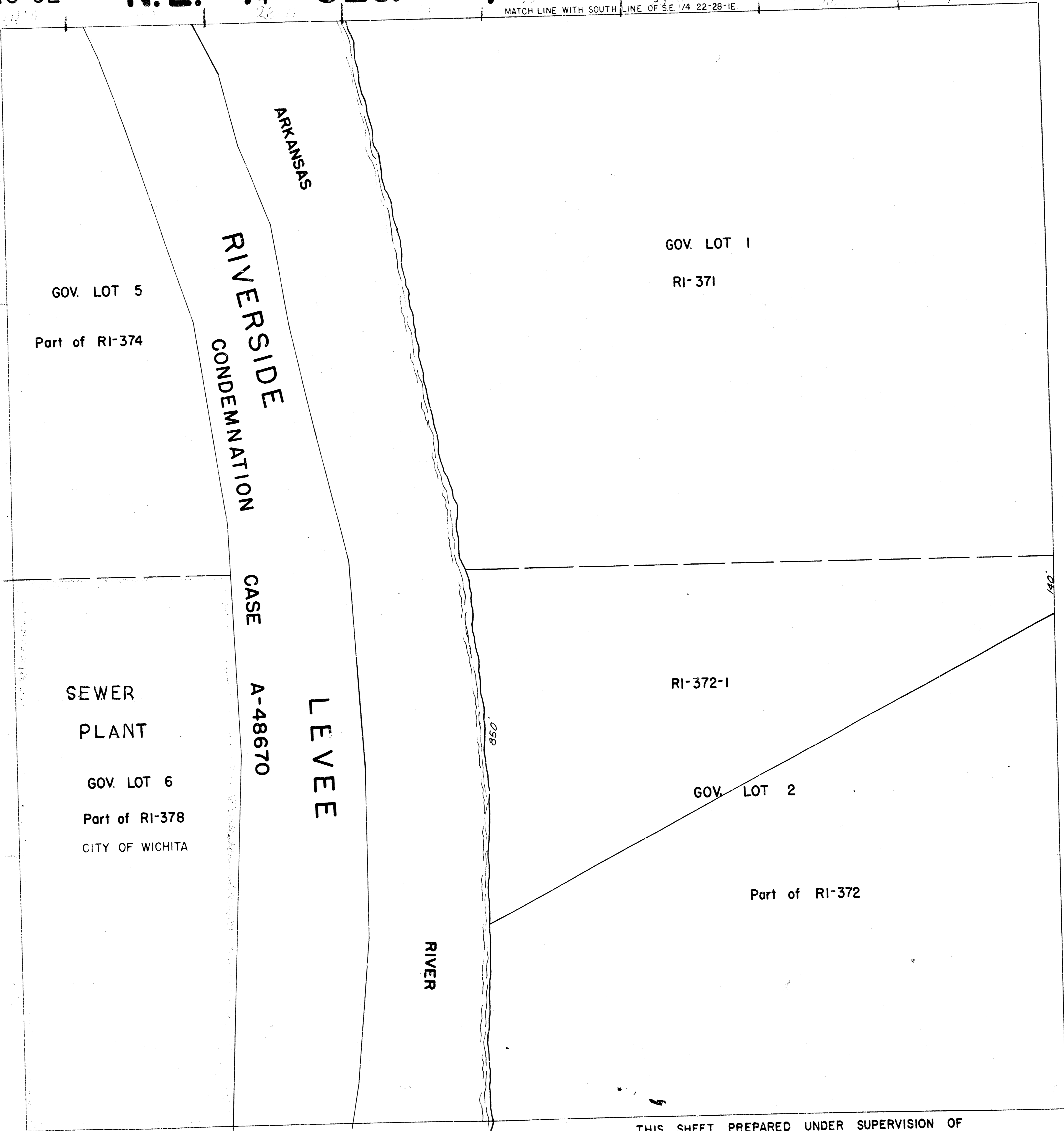


10-92

N.E. 1/4 SEC. 27, TWP. 28S, R.1E 10-92

MATCH LINE WITH SOUTH LINE OF S.E. 1/4 22-28-1E.



THIS SHEET PREPARED UNDER SUPERVISION OF
MARIE WARDEN, SEDGWICK COUNTY-CLERK