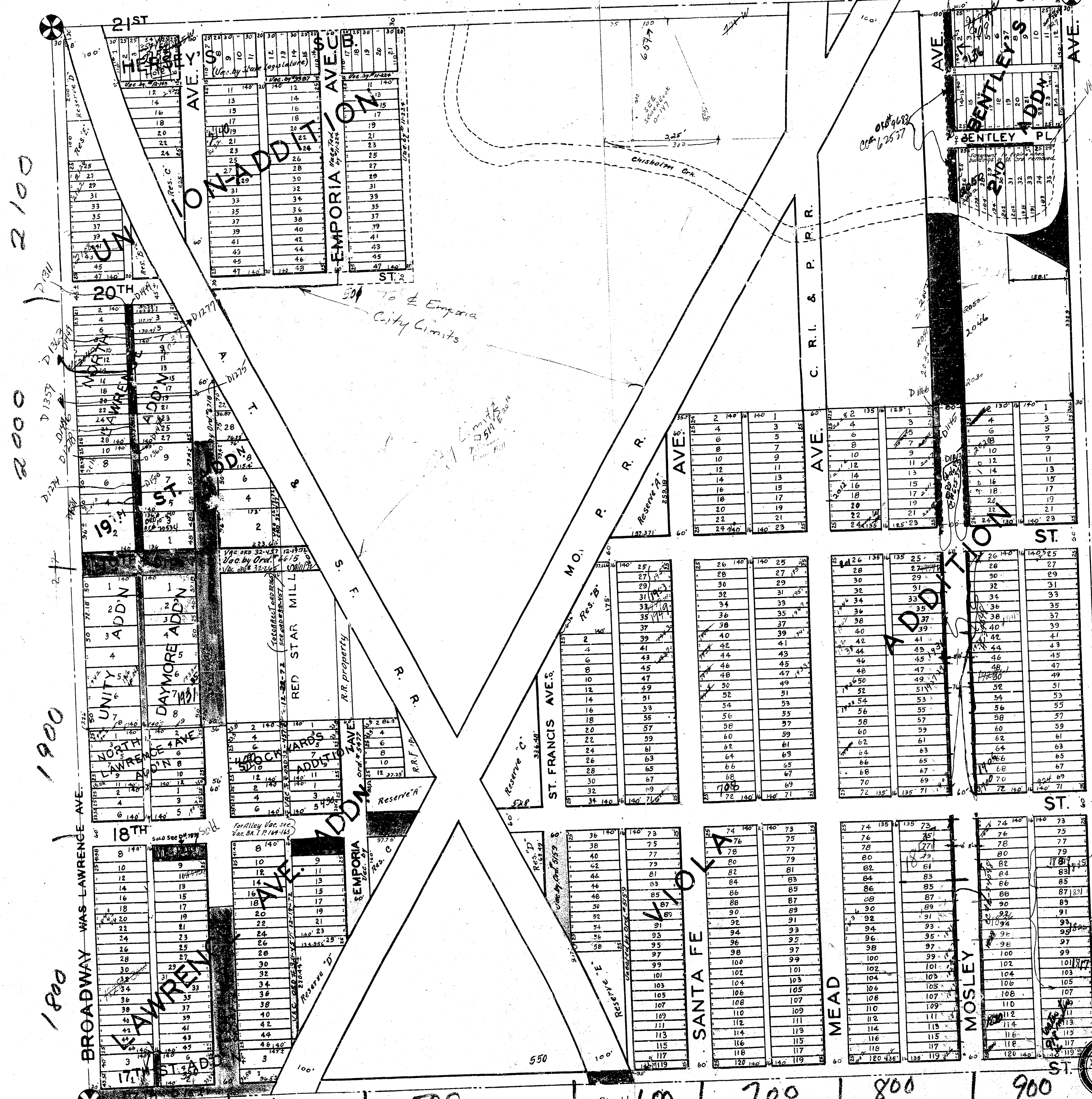


N.W. 1/4 SEC. 9 T. 27S. R. 1E.

9-38



2100

2000

1900

1800

300 400 500 600 700 800 900

NOTE: For Opp. 17th St. to E.L. Bldg. to E.L. T. & S.F. R/W, See Contd. BK. 1 - P. 53.

NOTE: Washington Ave. R/W is being changed. Washington is NOT open for lot & block add.