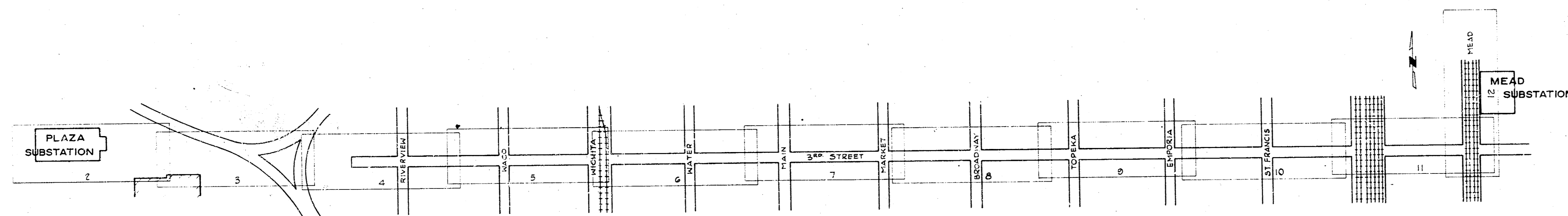
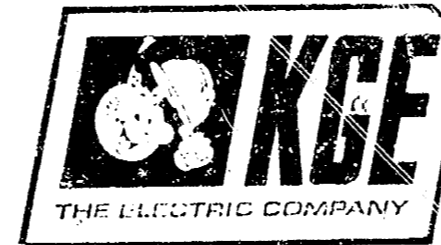


# K G & E, THE ELECTRIC COMPANY

RALPH FIEBACH, P.E. President

ELMER S. HALL, P.E. Vice President, Operations

JOHN H. HANSBERRY, P.E. Chief Engineer



## 69 KV UNDERGROUND TRANSMISSION LINE PLAZA SUBSTATION TO MEAD SUBSTATION WICHITA, KANSAS

SEPTEMBER, 1969

Plans Prepared by:  
R. S. DELAMATER & ASSOCIATES  
Consulting Engineers

**LEGEND:**

- SURVEY  $\epsilon$  & P.O.T.'s
- $\epsilon$  CABLE PIPE
- WATER LINE
- SANITARY SEWER
- STORM SEWER
- GAS LINE (CITIES SERVICE)
- GAS LINE (ARKLA GAS)
- K.G. & E. U.G. LINES
- TELEPHONE CABLES, U.G.

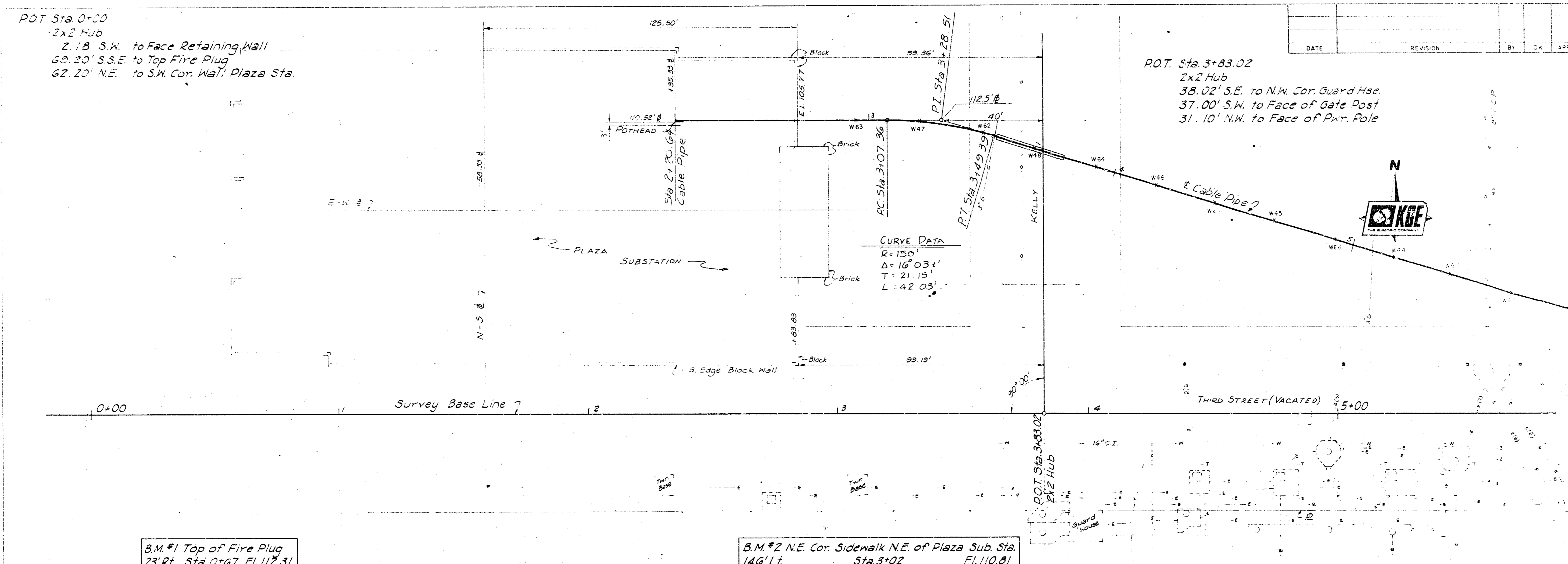
- THIMBLE (Survey Monument)
- MANHOLE - SAN. or ST. SEW.
- MANHOLE WITH GRATE
- TRAFFIC SIGNAL
- VALVE - GAS or WATER
- CURB INLET
- POWER POLE
- TELEPHONE POLE

*A. L. H. IT  
7/10/69  
100-10-1-70*

PLAZA-MEAD 69KV U.G. LINE  
TITLE SHEET & INDEX MAP

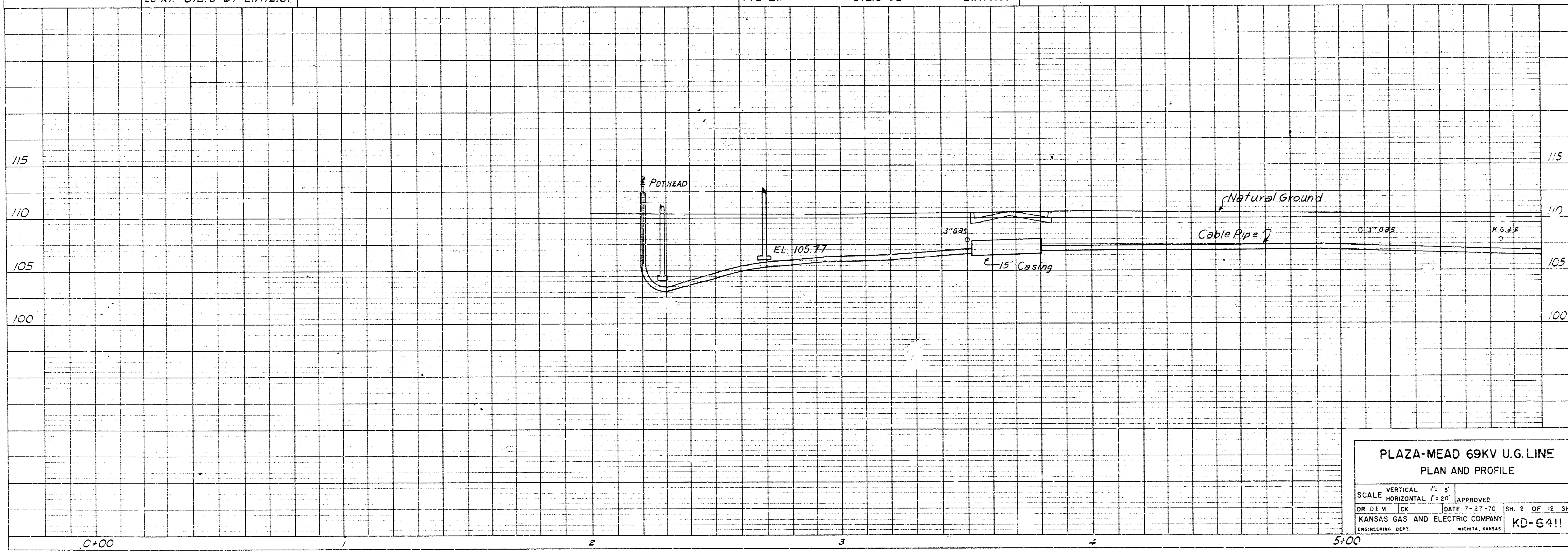
NO.	DATE	REVISION	BY	CK	APP	NO.	DATE	REVISION	BY	CK	APP	NO.	DATE	REVISION	BY	CK	APP

DR. P.P. \_\_\_\_\_  
CK. \_\_\_\_\_  
DATE \_\_\_\_\_  
KANSAS GAS AND ELECTRIC COMPANY  
ENGINEERING DEPT.      JOHN HANSBERRY  
SCALE: CH. 1 OF 12 SHEETS  
KD-6411



B.M. #1 Top of Fire Plug  
23' Rt. Sta. 0+67 El. 112.31

B.M. #2 N.E. Cor. Sidewalk N.E. of Plaza Sub. Sta.  
146' Lt. Sta. 3+02 El. 110.81



PLAZA-MEAD 69KV U.G. LINE  
PLAN AND PROFILE

VERTICAL SCALE: 1" = 5'  
HORIZONTAL SCALE: 1" = 25'

APPROVED: DR. D.E.M. CK. DATE: 7-27-70 SH. 2 OF 12 SHETS.

KANSAS GAS AND ELECTRIC COMPANY  
ENGINEER: DR. D.E.M. SURVEYOR: W.C.H. KANSAS

KD-6411

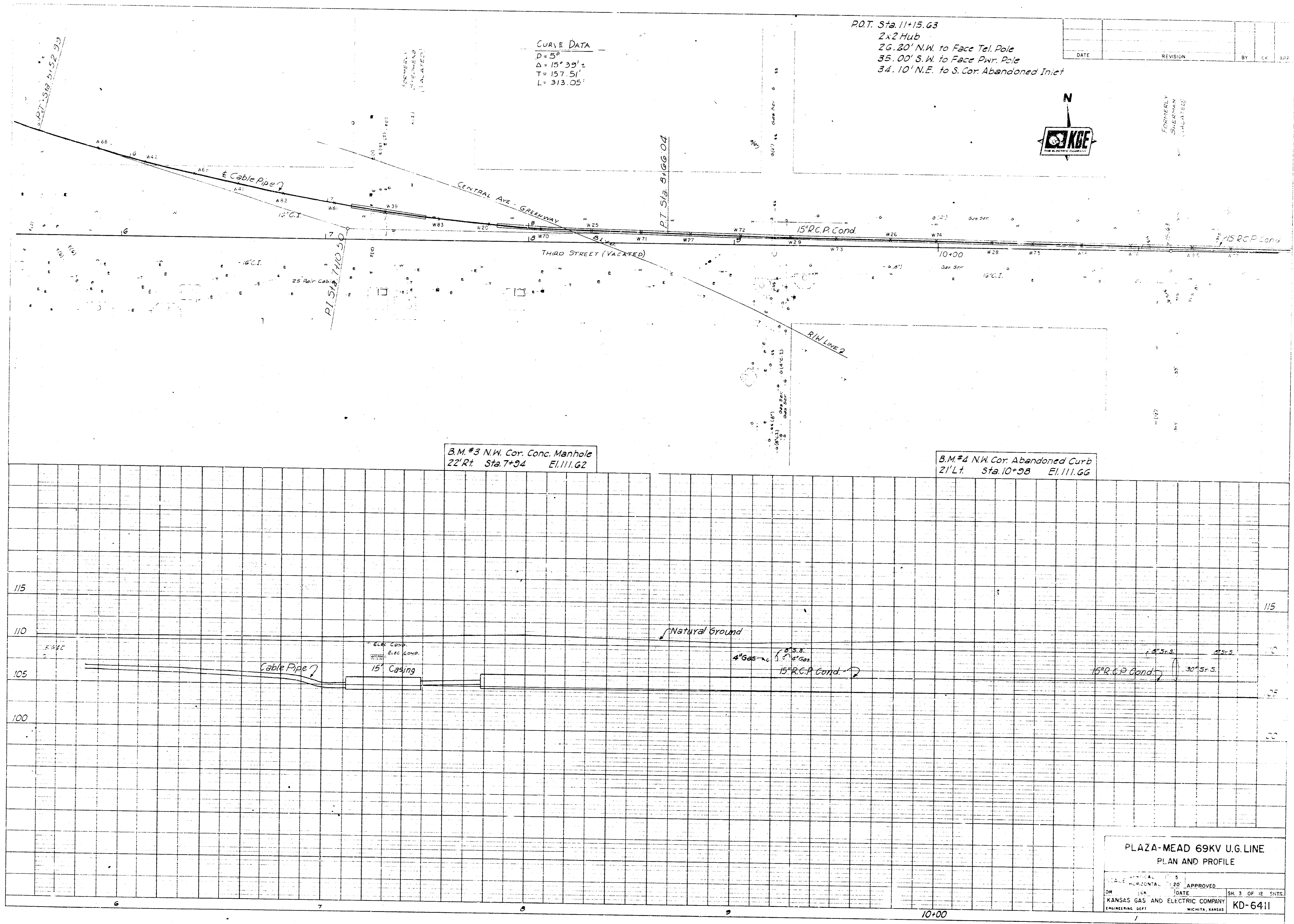
The undersigned hereby certifies that the above is a true and correct copy of the original as shown to him by the engineer in charge of the work.

Witness my hand and seal of office this 27th day of July, 1970.

DR. D.E.M. CK. SURVEYOR

The pipe in which this cable is installed is covered with a half-inch walling of concrete to protect the exterior protection. Do not remove any part of this pipe or any size it has, or any part of the walling, in the vicinity of the pipe, or that may support the pipe, until the pipe is replaced, if necessary, before the excavation is backfilled. Your cooperation in this matter will be appreciated.

Yours very truly,  
John H. Kennedy  
Surveyor  
K.G.E.C.



CURVE DATA  
 D = 58'  
 Δ = 151° 33' ±  
 T = 157.51'  
 L = 313.05'

P.O.T. Sta. 11+15.63  
 2x2 Hub  
 26.20' N.W. to Face Tel. Pole  
 35.00' S.W. to Face Pwr. Pole  
 34.10' N.E. to S. Cor. Abandoned Inlet



B.M.#3 N.W. Cor. Conc. Manhole  
 22' Lt. Sta. 7+34 El. 111.62

B.M.#4 N.W. Cor. Abandoned Curb  
 21' Lt. Sta. 10+38 El. 111.66

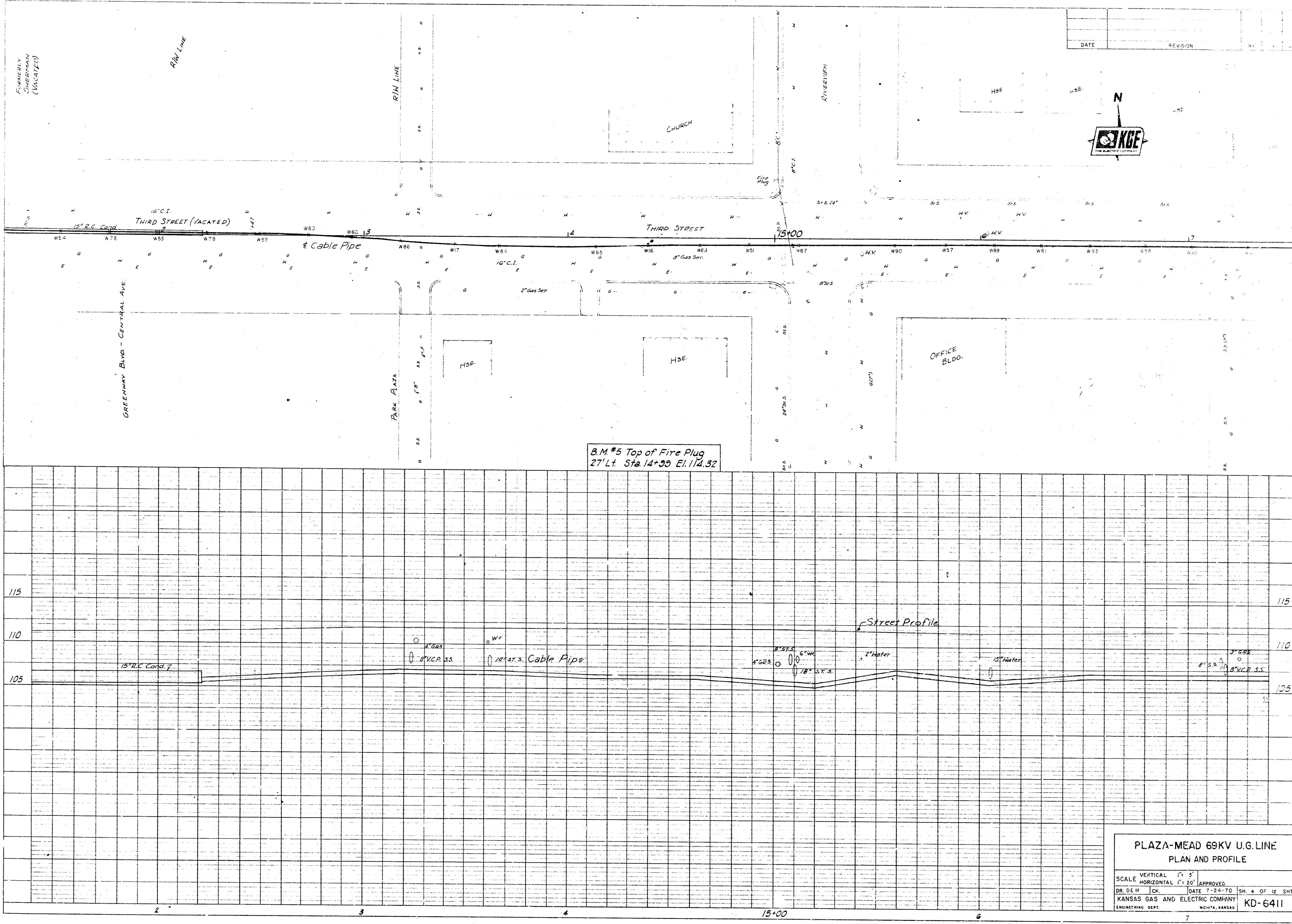
PLAZA-MEAD 69KV U.G. LINE  
 PLAN AND PROFILE

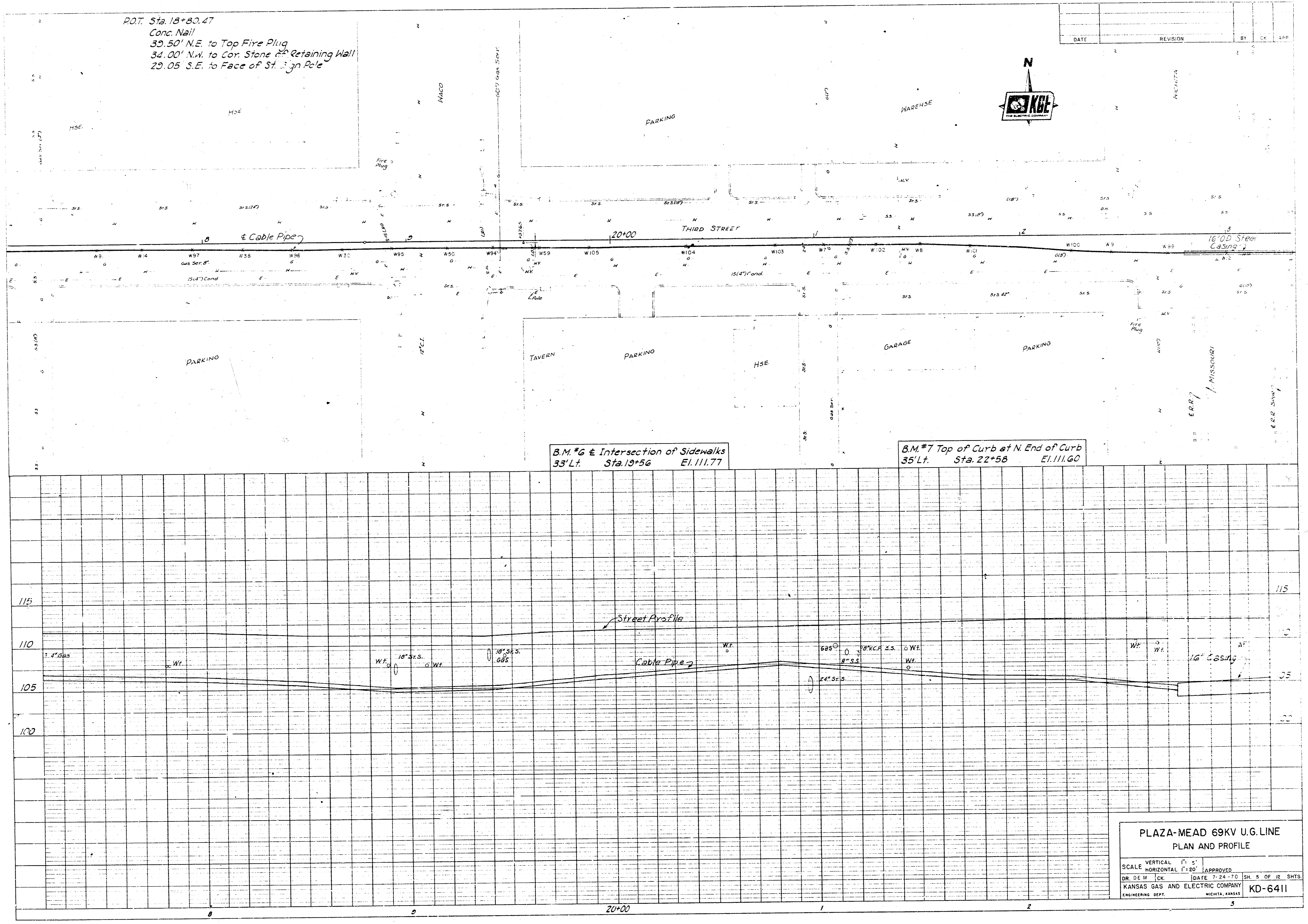
DATE	REVISION	BY	CHK	APP

APPROVED: \_\_\_\_\_  
 DATE: \_\_\_\_\_  
 KANSAS GAS AND ELECTRIC COMPANY  
 ENGINEERING DEPT. WICHITA, KANSAS

SK. 3 OF 12 SHEETS  
 KD-6411

10+00





P.O.T. Sta. 18+80.47  
 Conc. Nail  
 39.50' N.E. to Top Fire Plug  
 3d. 00' N.W. to Cor. Stone Retaining Wall  
 29.05' S.E. to Face of St. Sign Pole

DATE	REVISION	BY	CHK	APP



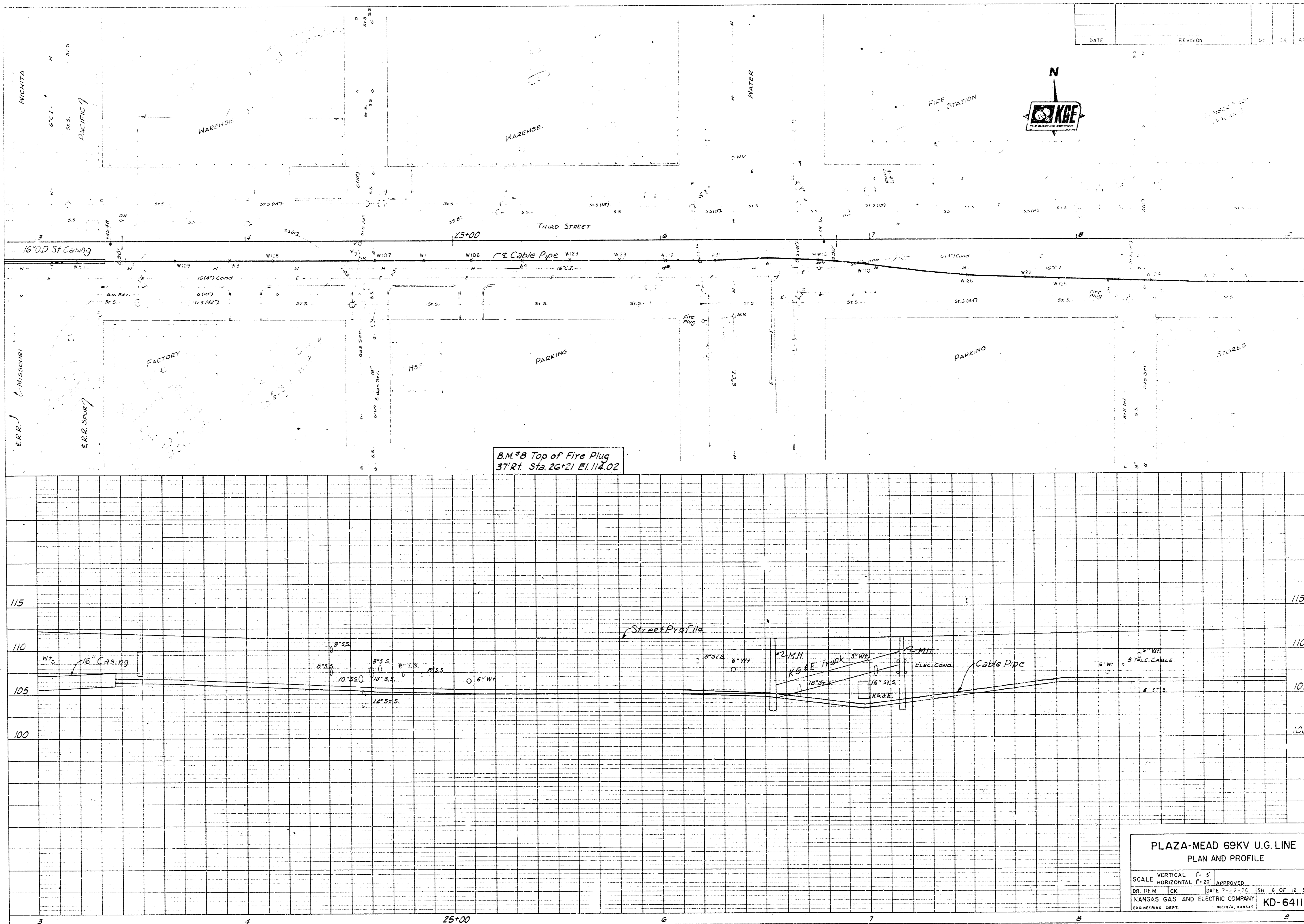
B.M. #6 @ Intersection of Sidewalks  
 35' Lt. Sta. 19+56 El. 111.77

B.M. #7 Top of Curb at N. End of Curb  
 35' Lt. Sta. 22+58 El. 111.60

**PLAZA-MEAD 69KV U.G. LINE**  
 PLAN AND PROFILE

SCALE: VERTICAL 1" = 5'  
 HORIZONTAL 1" = 20'

DR. D.E.M. CK. DATE: 7-24-70 SHEET 5 OF 12 SHEETS  
 KANSAS GAS AND ELECTRIC COMPANY  
 ENGINEERING DEPT. WICHITA, KANSAS **KD-6411**

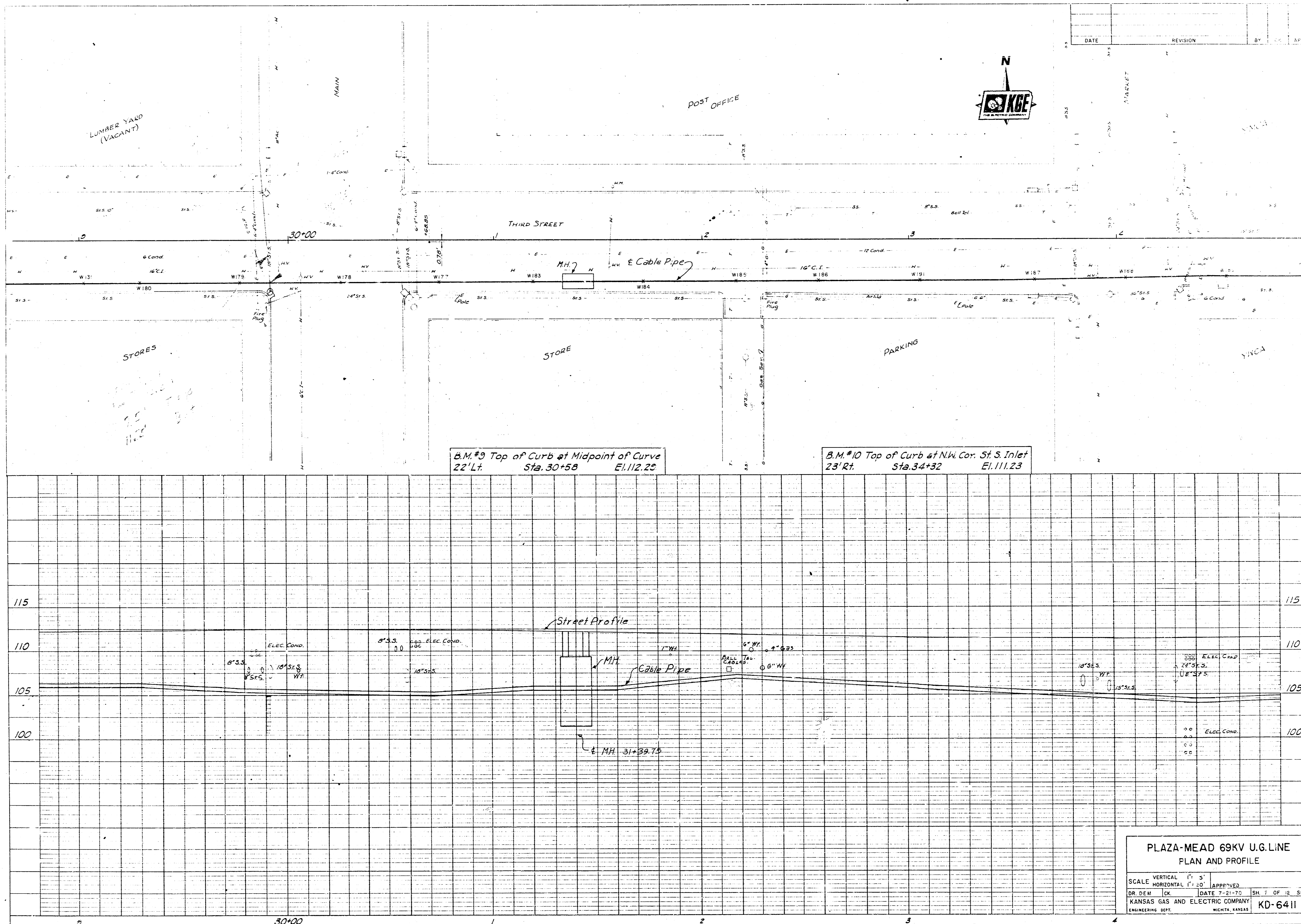


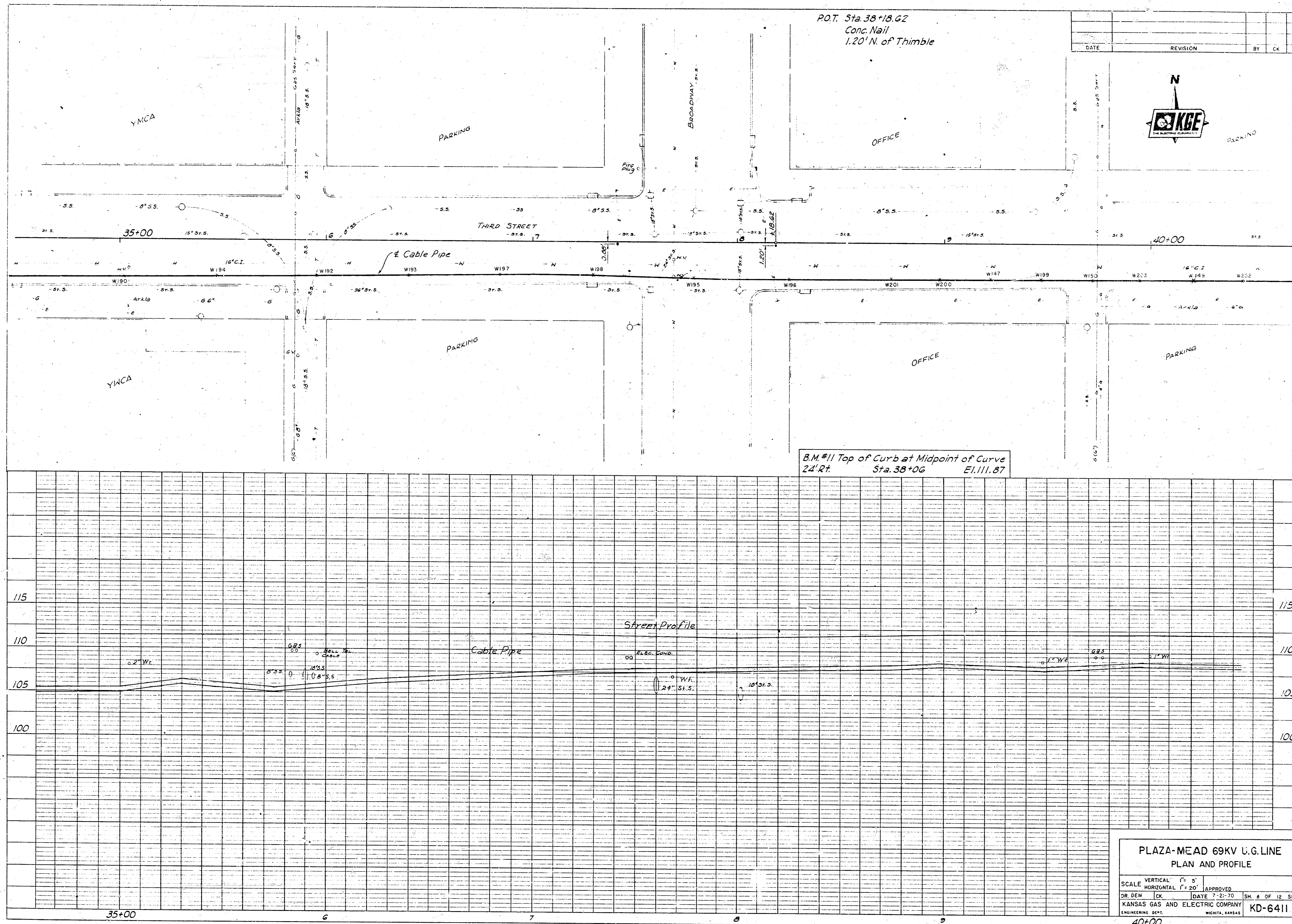
DATE	REVISION	BY	CHK	APP

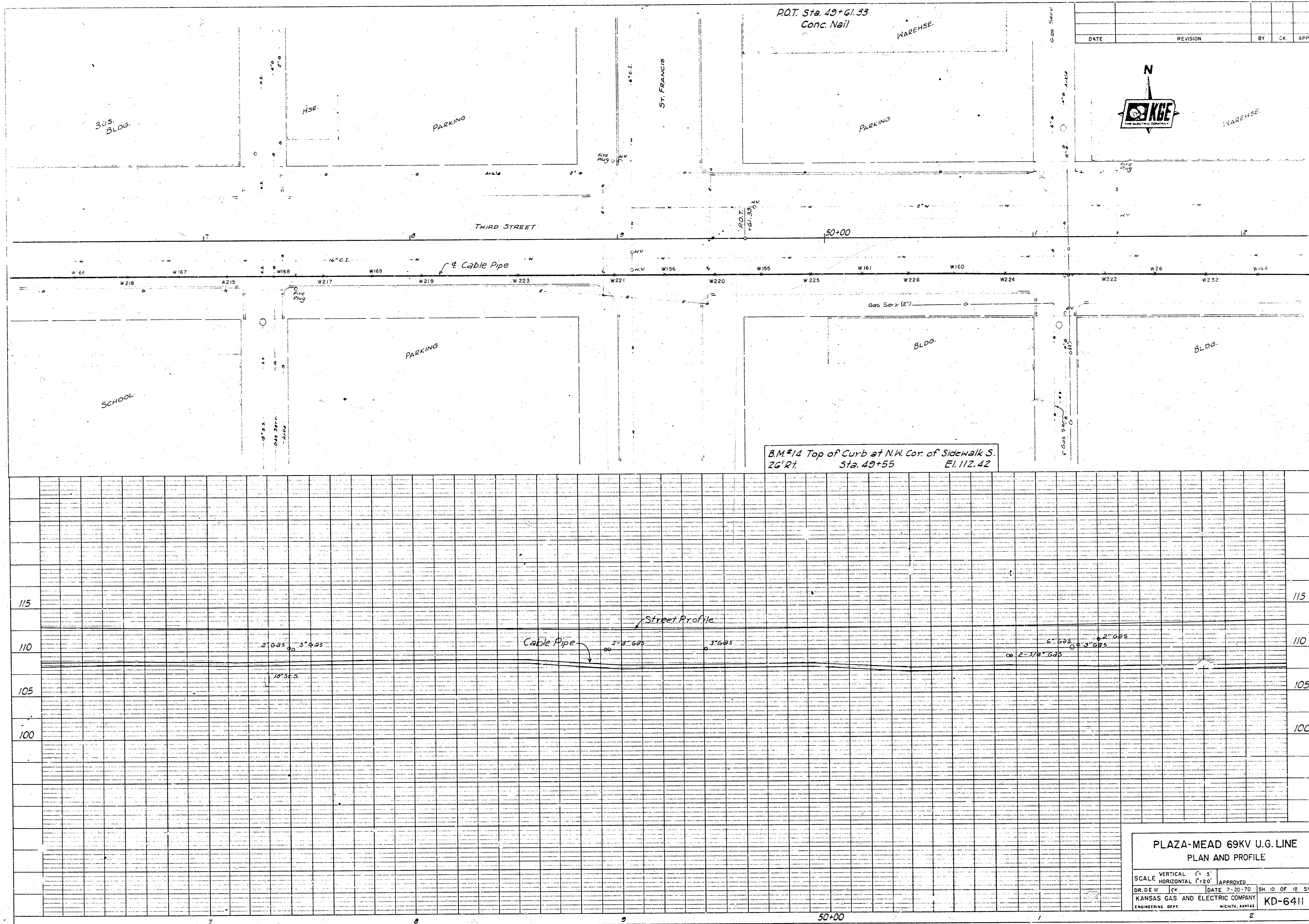


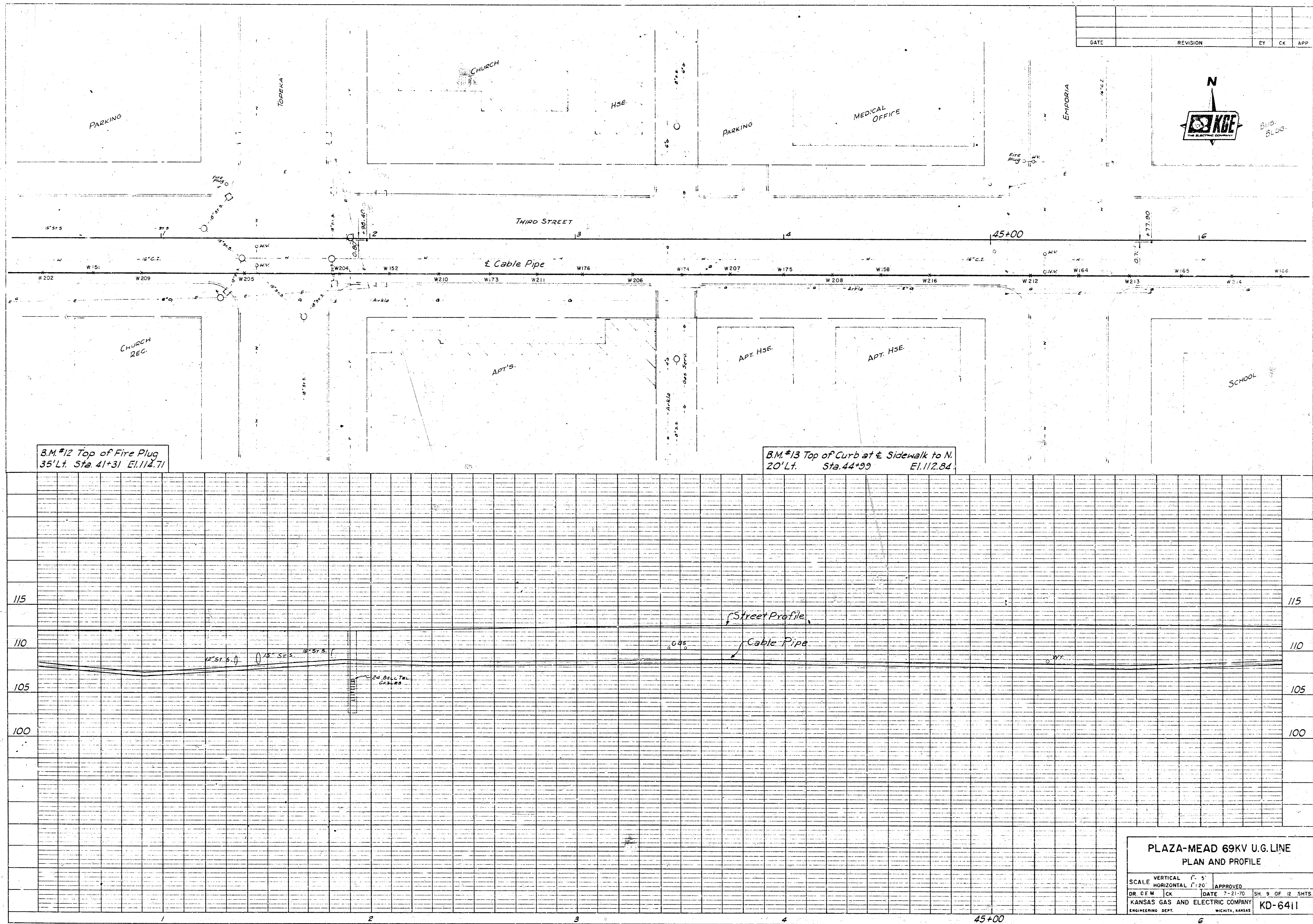
B.M. #8 Top of Fire Plug  
37' R/L Sta. 26+21 E.L. 112.02

**PLAZA-MEAD 69KV U.G. LINE**  
**PLAN AND PROFILE**  
 SCALE VERTICAL 1" = 5'  
 HORIZONTAL 1" = 50'  
 DR. DEM. [OK] DATE 7-21-70 SH. 6 OF 12 SHTS.  
 KANSAS GAS AND ELECTRIC COMPANY  
 ENGINEERING DEPT. WICHITA, KANSAS **KD-6411**

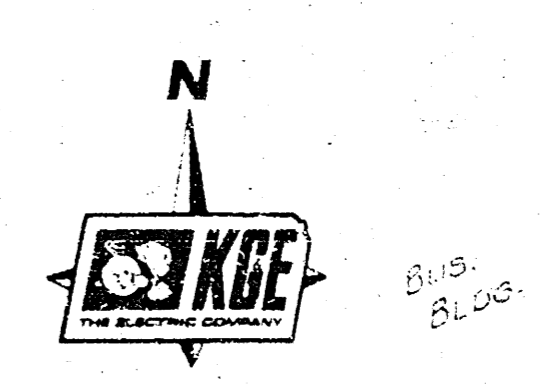








DATE	REVISION	EY	CK	APP



B.M.#12 Top of Fire Plug  
35' Lt. Sta. 41+31 El. 112.71

B.M.#13 Top of Curb at S. Sidewalk to N.  
20' Lt. Sta. 44+99 El. 112.84

**PLAZA-MEAD 69KV U.G. LINE**  
**PLAN AND PROFILE**

SCALE VERTICAL 1" = 5'  
SCALE HORIZONTAL 1" = 20'

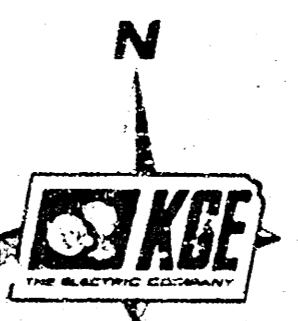
DR. OF M. CK. DATE 7-21-70 SH. 9 OF 12 SHEETS  
KANSAS GAS AND ELECTRIC COMPANY  
ENGINEERING DEPT. WICHITA, KANSAS  
KD-6411



P.O.T. Sta. 53+21.62  
2x2 Hub

P.I. Sta. 57+26.59  
Conc. Nail in Const. Joint  
53.55' S.E. to N.W. Cor. Bldg.  
40.75' N.W. to S.E. Cor. Loading Dock  
41.45' S.W. to R.R. Spk. in Pwr. Pole

DATE	REVISION	BY	CK	APP

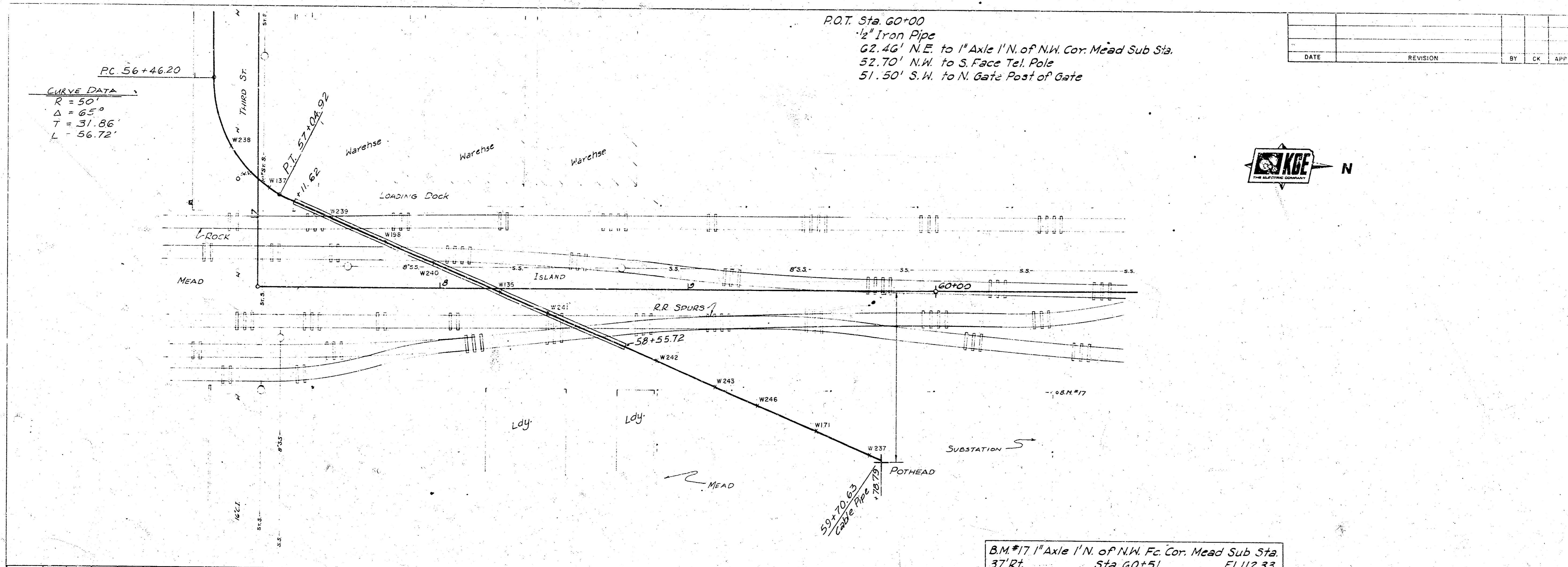


B.M. #15 Top of Sidewalk at the S.E. Cor. of Warehouse  
35' Lt. Sta. 52+61 El. 112.98

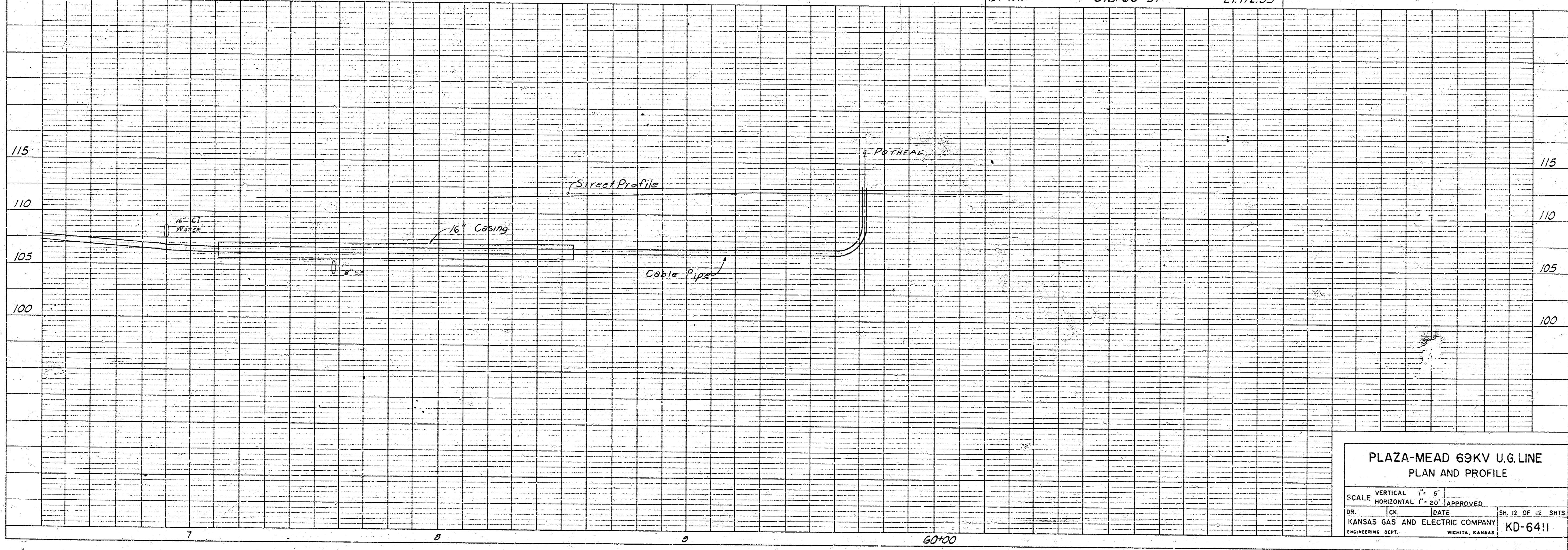
B.M. #16 R.R. Spk. in Pwr. Pole  
26' Rt. Sta. 56+95 El. 112.32

**PLAZA-MEAD 69KV U.G. LINE  
PLAN AND PROFILE**

VERTICAL 1" = 5'  
SCALE HORIZONTAL 1" = 20'  
APPROVED  
DR. D.E.W. [Signature] DATE 7-20-70 SHEET 11 OF 12 SHEETS  
KANSAS GAS AND ELECTRIC COMPANY  
ENGINEERING DEPT. WICHITA, KANSAS KD-6411



DATE	REVISION	BY	CHK	APP



**PLAZA-MEAD 69KV U.G. LINE**  
**PLAN AND PROFILE**  
 SCALE VERTICAL 1" = 5'  
 HORIZONTAL 1" = 20'  
 DR. [ ] DATE [ ] APPROVED [ ]  
 KANSAS GAS AND ELECTRIC COMPANY  
 ENGINEERING DEPT. WICHITA, KANSAS  
 SH. 12 OF 12 SHTS.  
**KD-6411**