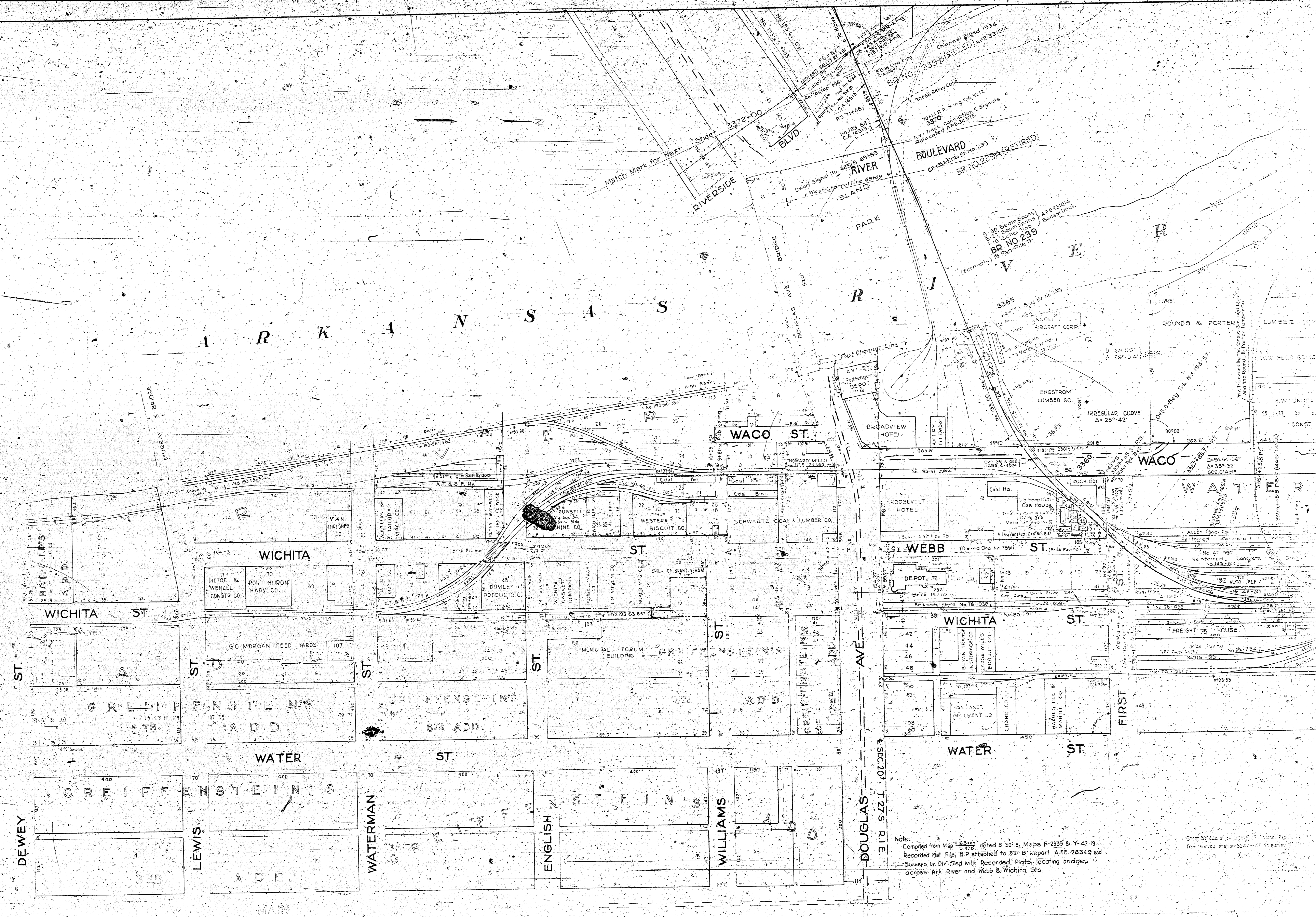
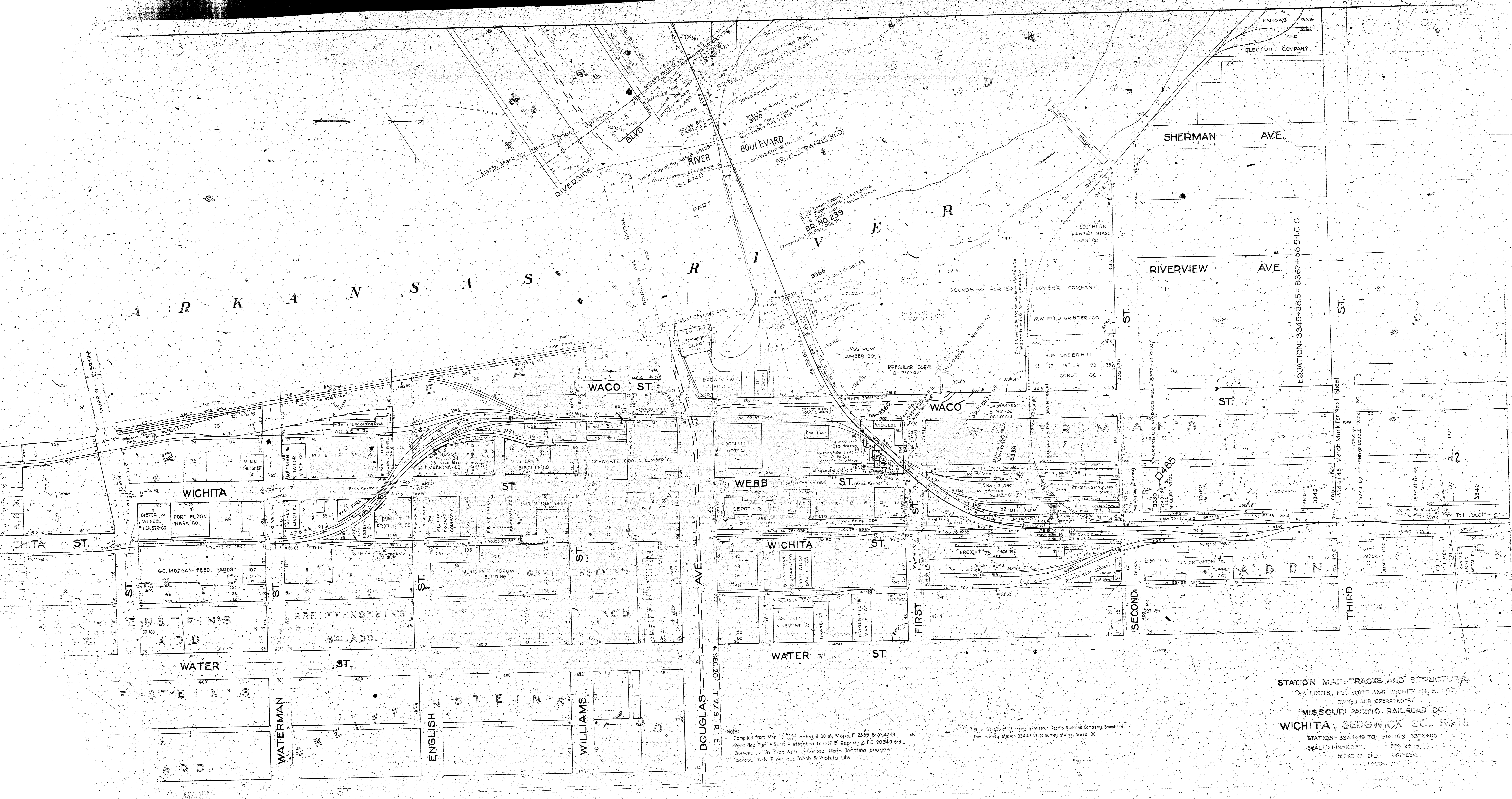


REVISED AS TO	SOURCE	DATE	DRAFTSMAN
Install King Sign	11516 1538B	12-31-39	J.A. Wolfgram
Relocate RR No. 135	331015 1531B	12-31-34	A.G. Stevenson
AVI Track & Conn Relocated	32375 1537B	9-31-35	A.G. Stevenson



Note:  
 Compiled from Map 4-8814, dated 6-30-18, Maps F-2339 & Y-42-19.  
 Recorded Plat file, B-P attached to 2597-B Report A.F.E. 28349 and  
 Surveys by Div. filed with Recorded Plats, locating bridges  
 across Ark. River and Webb & Wichita Sts.

Sheet ST-412 of 44-10000



Note:  
 Compiled from Maps dated 6-30-18, Maps F-2339 & Y-42-19  
 Recorded Plat. File: B-P attached to 1937 B-Report & FE 28349 and  
 Surveys by Div. and with Deeded Plats touching bridges  
 across Ark. River and Webb & Wichita Sts.

STATION MAP TRACKS AND STRUCTURES  
 ST. LOUIS, FT. SCOTT AND WICHITA, R. CO.  
 OWNED AND OPERATED BY  
 MISSOURI PACIFIC RAILROAD CO.  
 WICHITA, SEDGWICK CO., KAN.  
 STATION: 3344+00 TO STATION 3372+00  
 SCALE: 1"=100 FT. FEB 23, 1932  
 OFFICE OF CHIEF ENGINEER