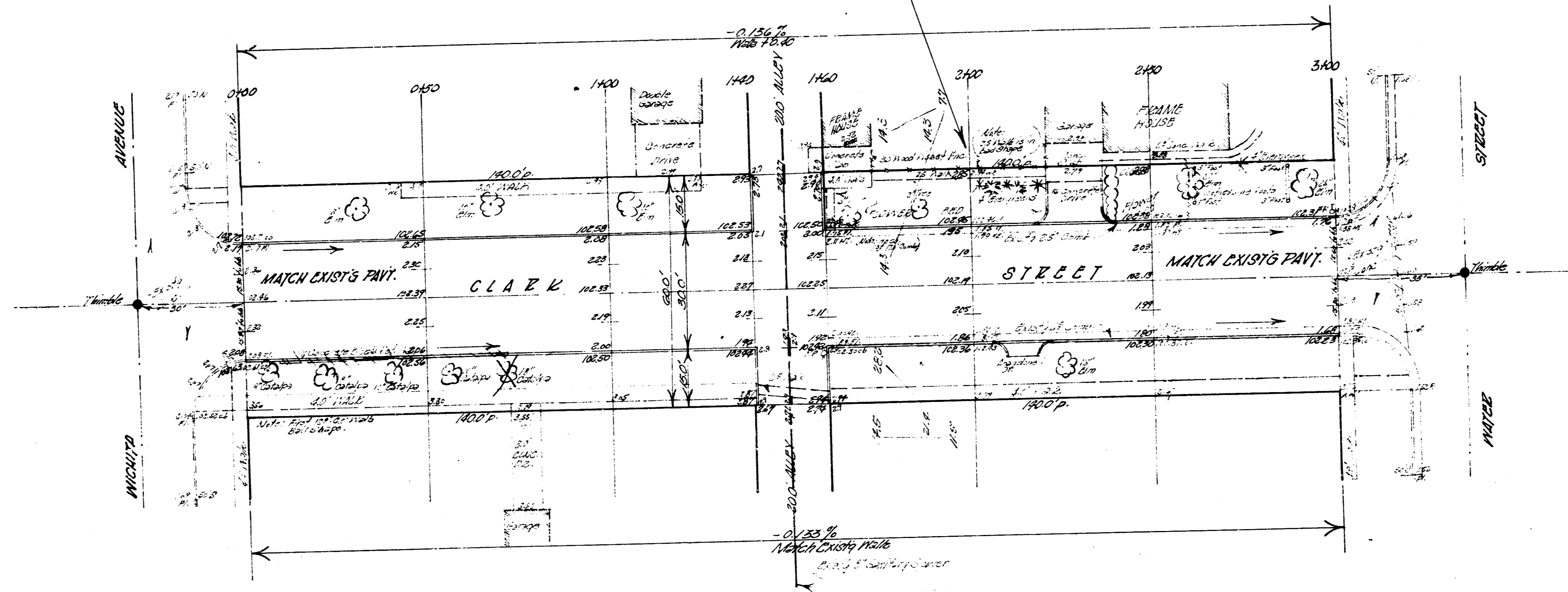


B.M. 101.70 "Iron in Thumb" at both Water & Clark Streets.
 Baseline - Center Line CLARK STREET going East.



NOTE: No grading to be done on N. Side Clark St. in Parking
 from Sta. 1400 to Sta. 3400.

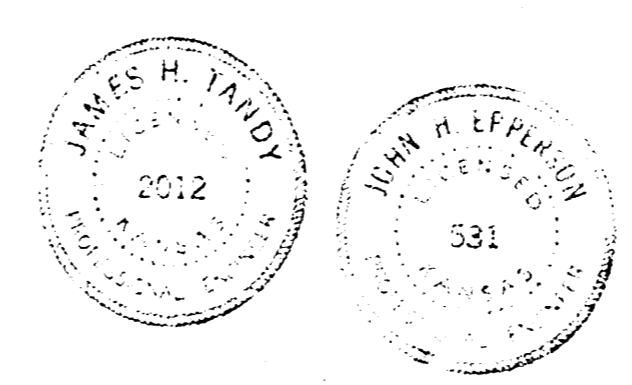


NOTE TO FIELD ENGINEER
 Secure Distance From Thumb to Thumb = 3650.0m.

Survey
 Plan
 Checked



CLARK STREET
 CL. WICHITA AVE to W. 14TH ST.
 300' CONC. & CB.
 CITY OF WICHITA, KANSAS
 S. S. SMITH CITY ENGINEER
 Date: JUNE, 1958. PROJ. NO. 34-23



EXCAVATION TOTALS	
PROPERTY	CITY
83.6	28.8
10% 8.3	2.7
77.7	31.7 EX.

1/8