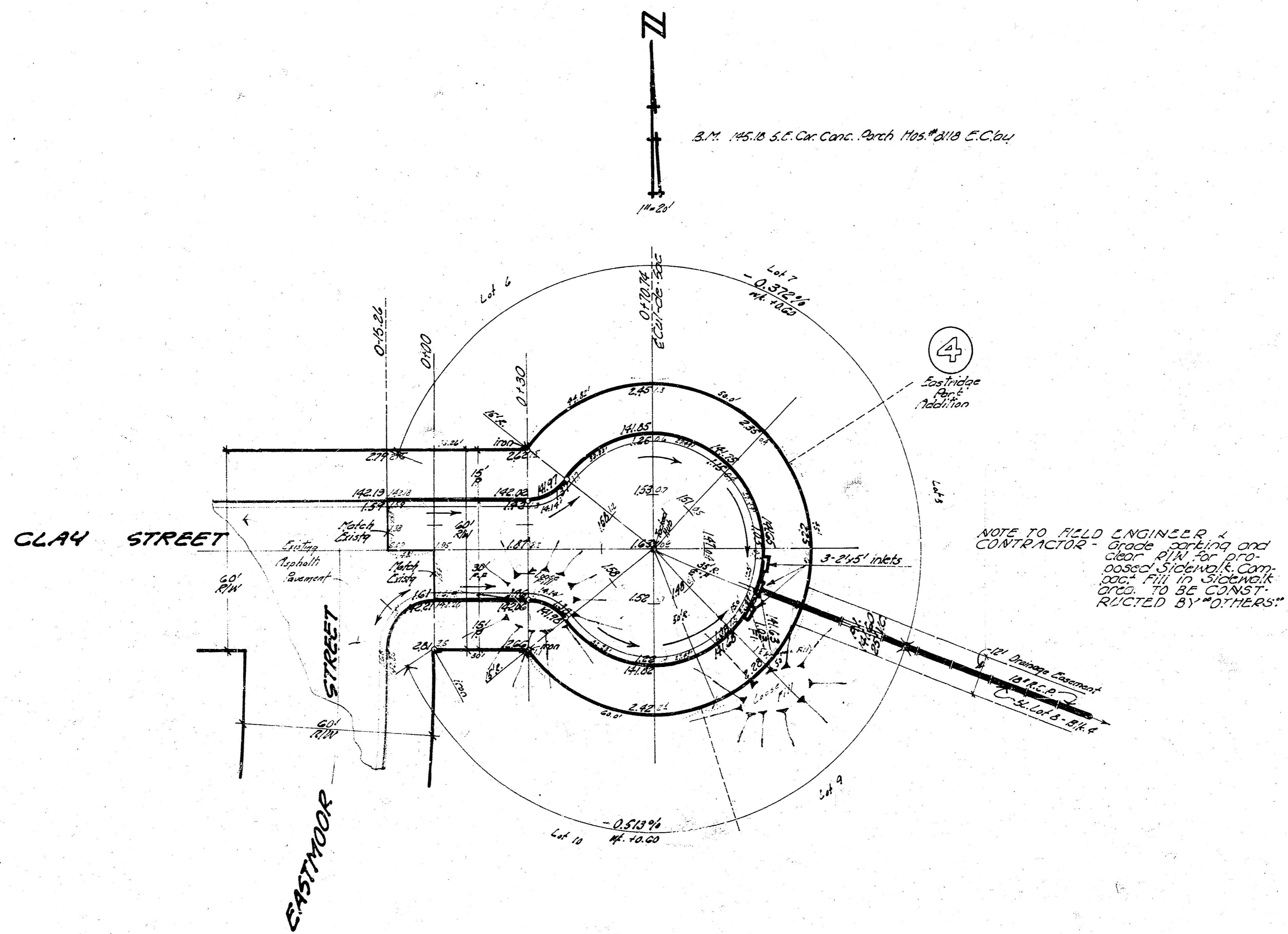


Primary Survey
 No. 57
 City of Wichita
 Kansas



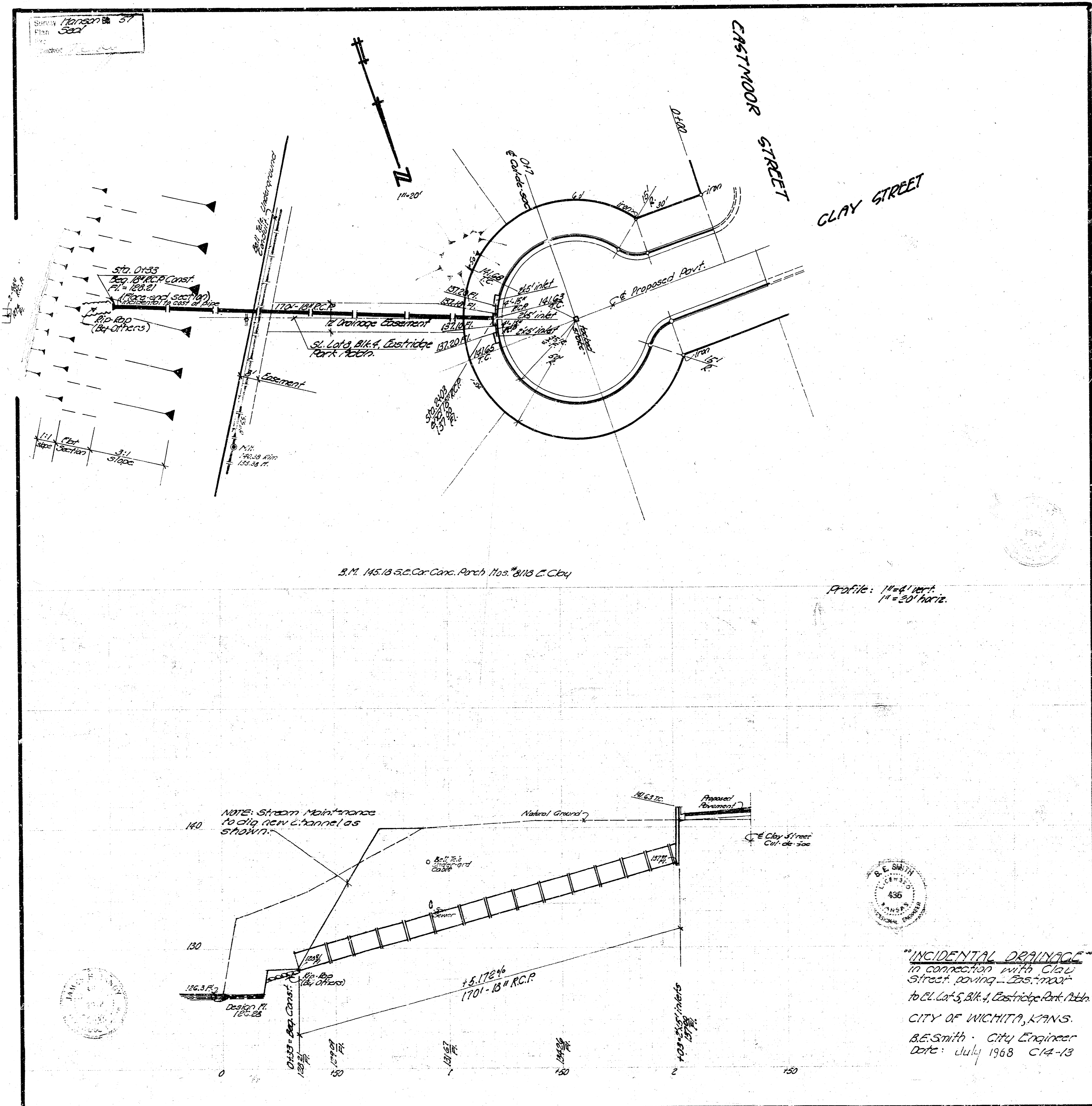
NOTE TO FIELD ENGINEER &
 CONTRACTOR - Grade parking and
 clear 8'W for pro-
 posed sidewalk. Com-
 plete fill in sidewalk
 area to be const-
 ructed by others.

"Earthwork Quantities"

Excavation	Compacted Fill
105' C.Y.	82' C.Y.
123' (10%)	93' (10%)
1372' C.Y.	95' C.Y.

"CLAY STREET"
 Eastmoor to E. Lot 5, Blk. 4,
 Eastridge Park Addition including
 Curbs etc.
 30' x 2'-30" Asphalt & Comb. Ch. & Gr.
CITY OF WICHITA, KANS.
 B.E. Smith — City Engineer
 Date - July 1918 Proj. No. C14-13





SHEET *Hanson 37*
 PLAN *302*
 DATE

S.M. 145.13 S.C. Co. Conc. Arch. 1105' 0" 113' 0" Clay

Profile: 1" = 4' vert.
 1" = 20' horiz.

NOTE: Stream Maintenance to dig new channels as shown.



"INCIDENTAL DRAINAGE"
 in connection with Clay Street paving - 24" max - to E.L. Lot 5, Blk. 4, Castledge Park Addn.
 CITY OF WICHITA, KANS.
 B.E. Smith - City Engineer
 Date: July 1968 C14-13