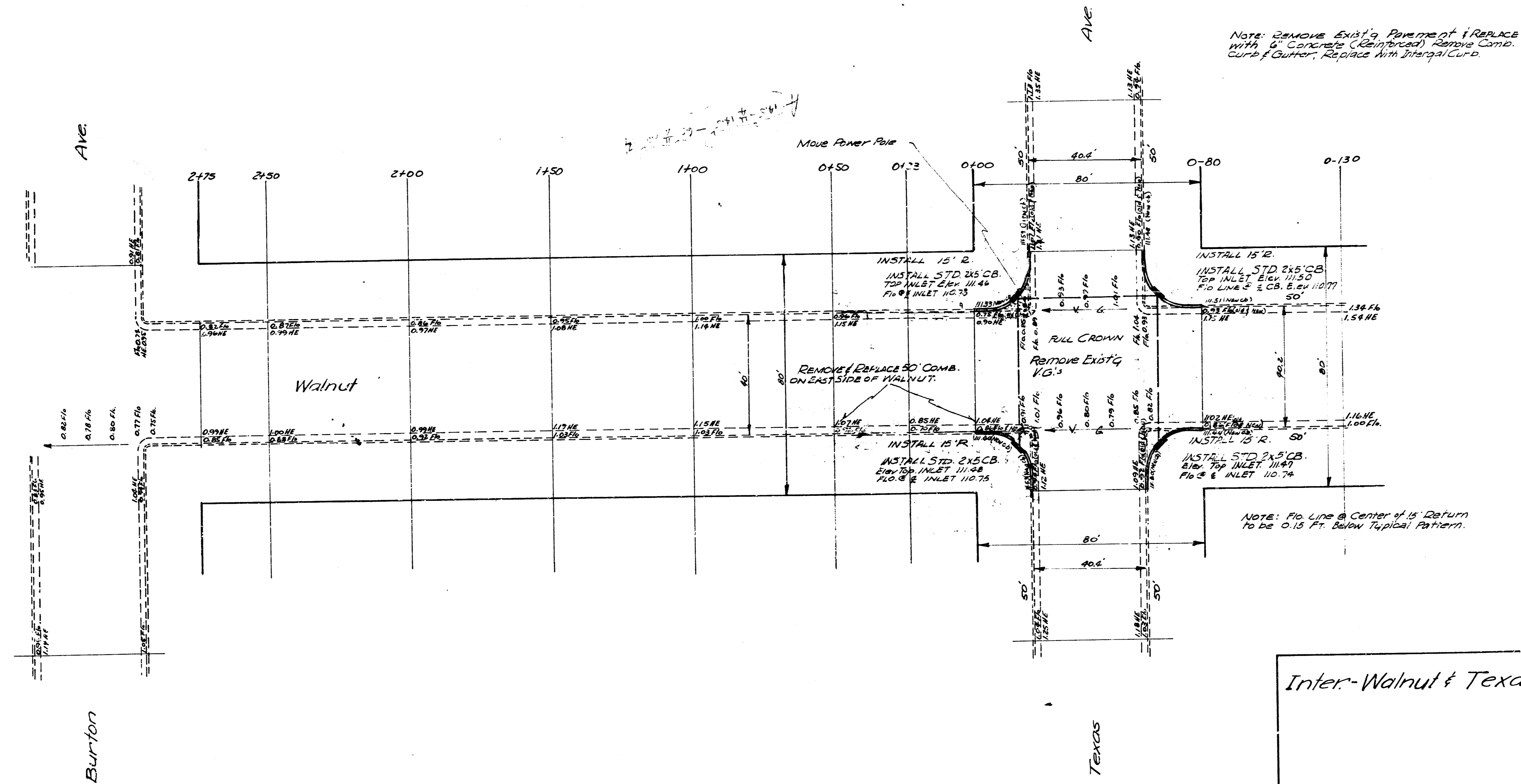
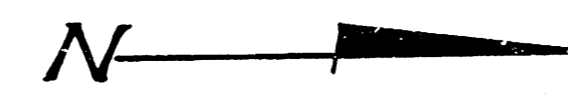
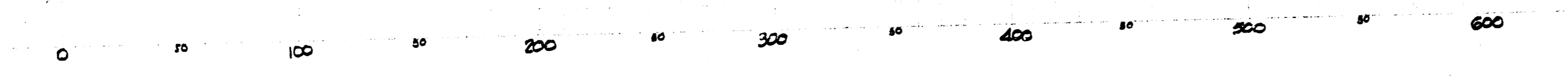
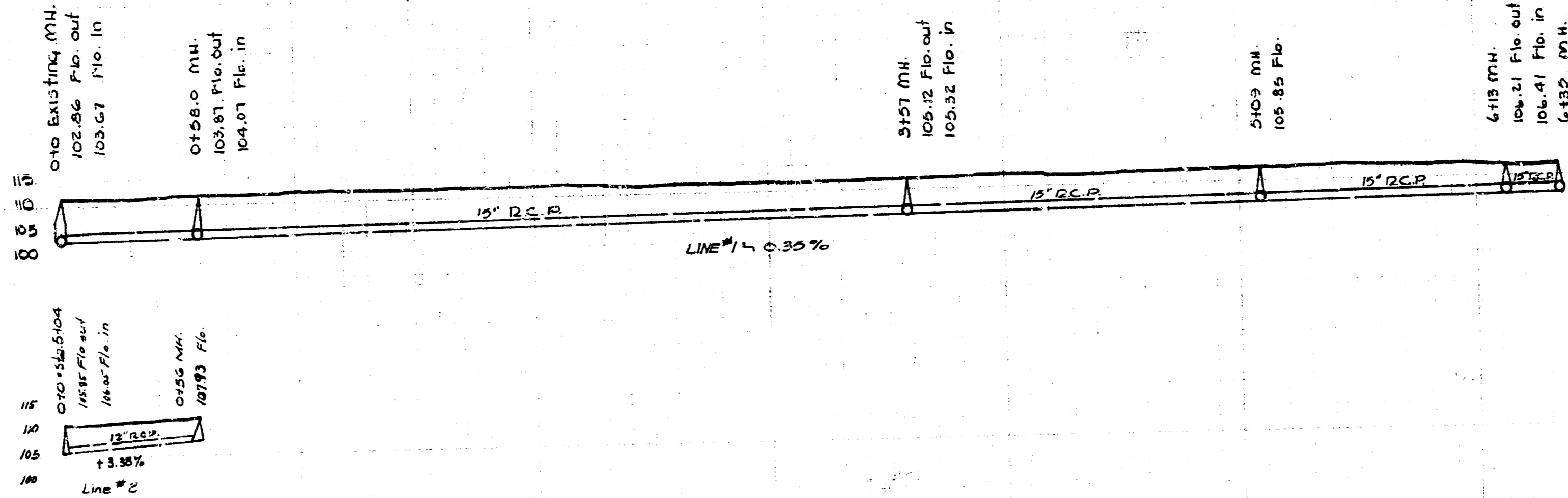
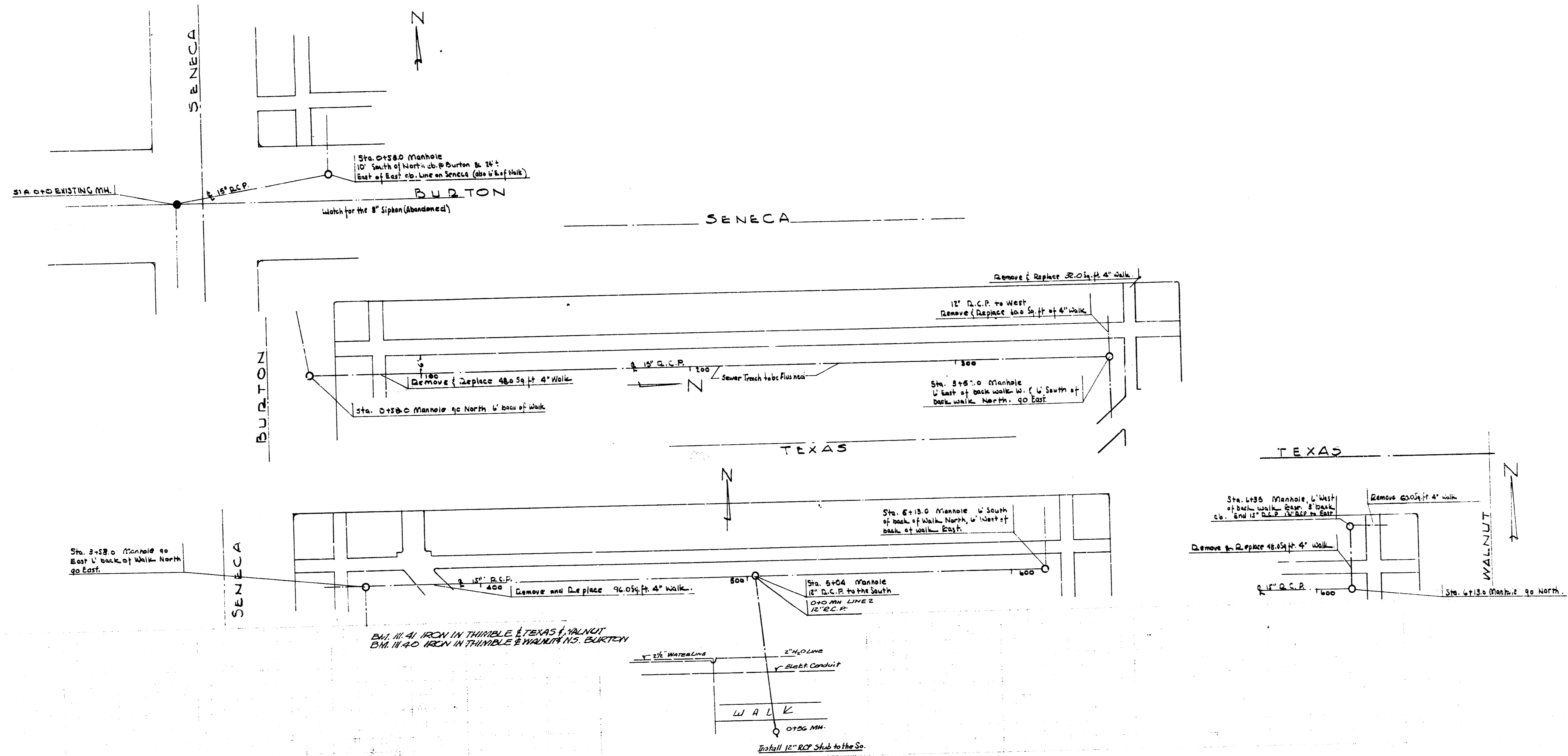
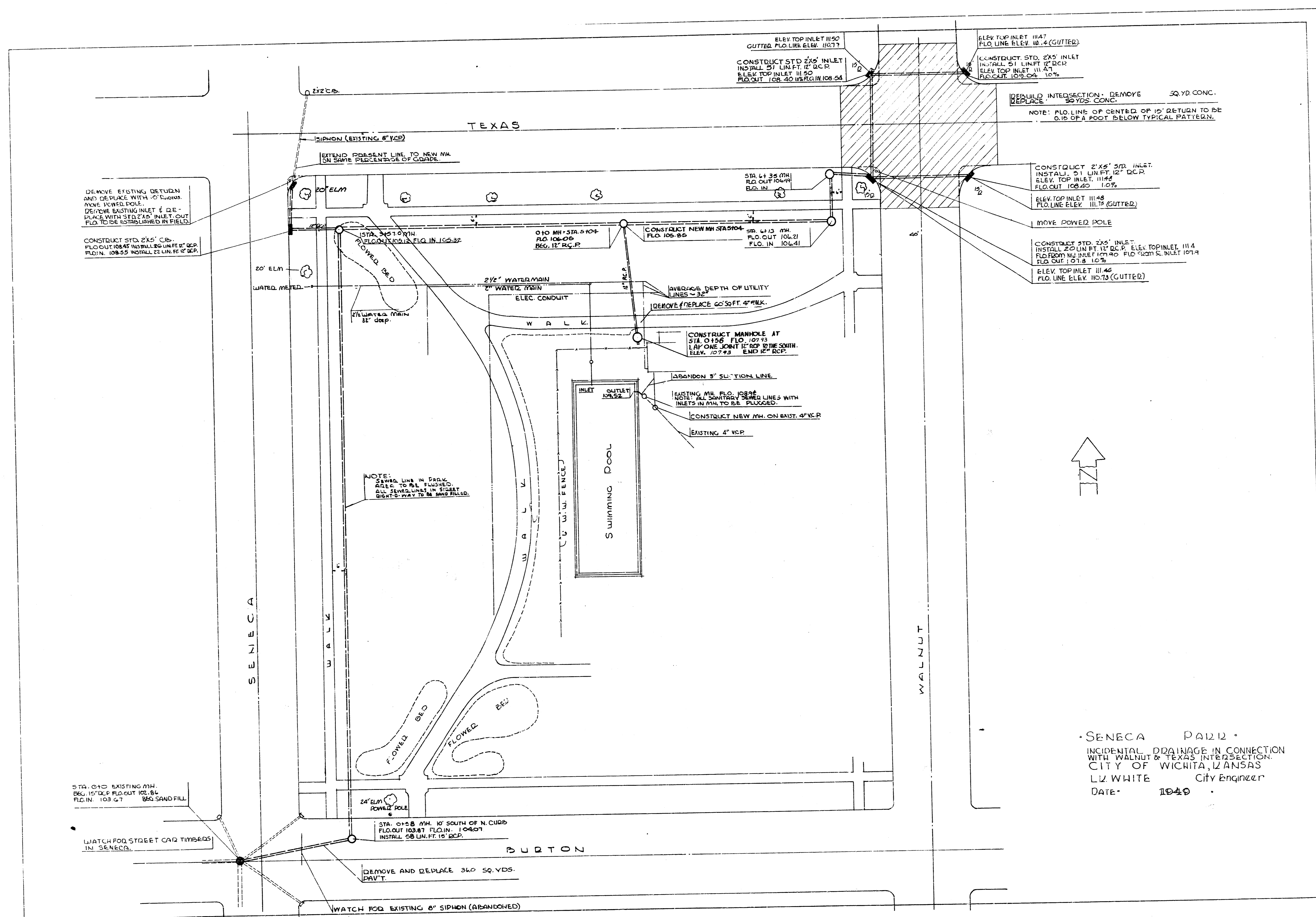


B.M. 111.41 Iron in thimble & Texas & Walnut
B.M. 111.40 Iron in thimble & Walnut & N.S. Burton







REMOVE EXISTING DETUDN AND REPLACE WITH 20' CONC. AVE. POWER POLE. REMOVE EXISTING INLET & REPLACE WITH STD 24" INLET. OUT FLO. TO BE ESTABLISHED IN FIELD.

CONSTRUCT STD. 24" CB. FLO. OUT 108.55 INSTALL 12" LIN. FF 12" DEP.

NOTE: SAVED LINE IN PARK. ALEC. TO BE FLUSHED. ALL SEWER LINES IN STREET RIGHT-OF-WAY TO BE ABANDONED.

STA. 0+00 EXISTING M.H. DEG. 15" D.P. FLO. OUT 102.84 FLO. IN 103.67 865 SAND FILL

WATCH FOR STREET CAR TIMBERS IN SENECA.

STA. 0+58 M.H. 10' SOUTH OF N. CURB FLO. OUT 103.87 FLO. IN 104.07 INSTALL 68 LIN. FT. 12" DCP.

REMOVE AND REPLACE 360 SQ. YDS. PRIVT.

WATCH FOR EXISTING 6" SIPHON (ABANDONED)

ELEV. TOP INLET 11.50 GUTTER FLO. LINE ELEV. 11.77
CONSTRUCT STD 24" INLET 12" LIN. FT. 12" DCP. ELEV. TOP INLET 11.50 FLO. OUT 108.40 IN 108.64

ELEV. TOP INLET 11.47 FLO. LINE ELEV. 11.4 (GUTTER)
CONSTRUCT STD. 24" INLET 12" LIN. FT. 12" DCP. ELEV. TOP INLET 11.47 FLO. OUT 108.64 1.0%

REBUILD INTERSECTION. REMOVE 50 YD. CONC. REPLACE 50 YDS. CONC.
NOTE: FLO. LINE OF CENTER OF 10' RETURN TO BE 0.15 OF A FOOT BELOW TYPICAL PATTERN.

CONSTRUCT 24" STD. INLET. INSTALL 51 LIN. FT. 12" DCP. ELEV. TOP INLET 11.44 FLO. OUT 108.42 1.0%
ELEV. TOP INLET 11.48 FLO. LINE ELEV. 11.75 (GUTTER)

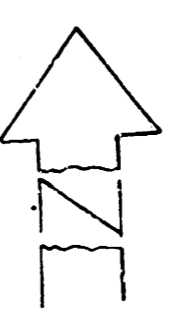
MOVE POWER POLE

CONSTRUCT STD. 24" INLET. INSTALL 51 LIN. FT. 12" DCP. ELEV. TOP INLET 11.4 FLO. FROM N.W. INLET 107.90 FLO. FROM S.W. INLET 107.9 FLO. OUT 107.8 1.0%
ELEV. TOP INLET 11.46 FLO. LINE ELEV. 11.75 (GUTTER)

OVERAGE DEPTH OF UTILITY LINES ~ 32"
REMOVE & REPLACE 60 SQ. FT. 4" M.H.K.

CONSTRUCT MANHOLE AT STA. 0+58 FLO. 107.93 LAY ONE JOINT 12" DEP. TO THE SOUTH. ELEV. 107.93 END 12" RCP.

ABANDON 8" S.W. TION LINE
EXISTING M.H. FLO. 108.84
NOTE: ALL EXISTING SEWER LINES WITH INLETS IN M.H. TO BE PLUGGED.
CONSTRUCT NEW M.H. ON EAST. 4" VCP
EXISTING 4" VCP



• SENECA PA1212 •
INCIDENTAL DRAINAGE IN CONNECTION WITH WALNUT & TEXAS INTERSECTION.
CITY OF WICHITA, KANSAS
L.V. WHITE City Engineer
DATE: 10-4-0