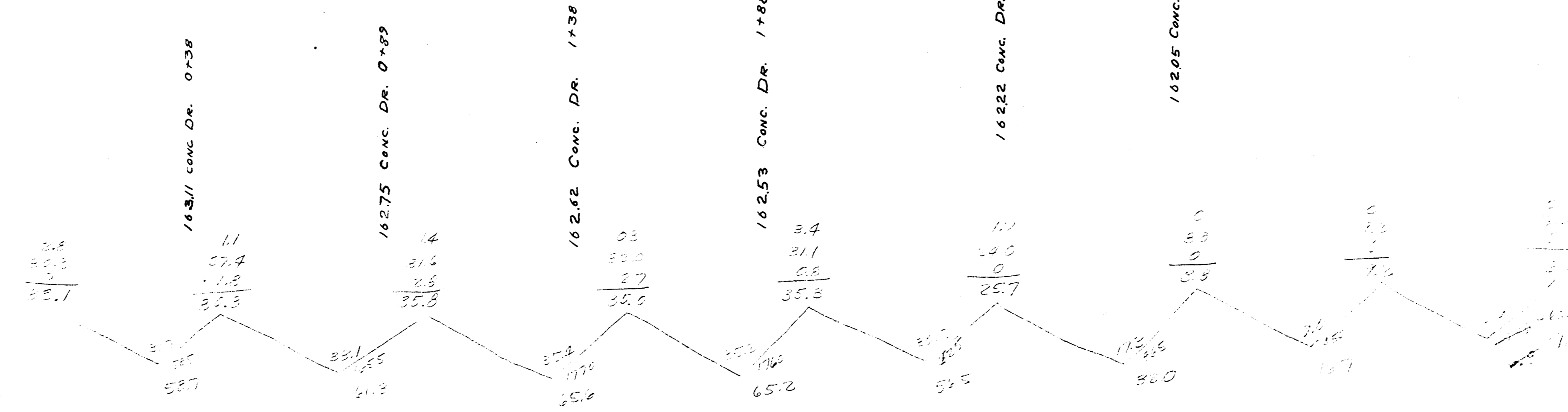
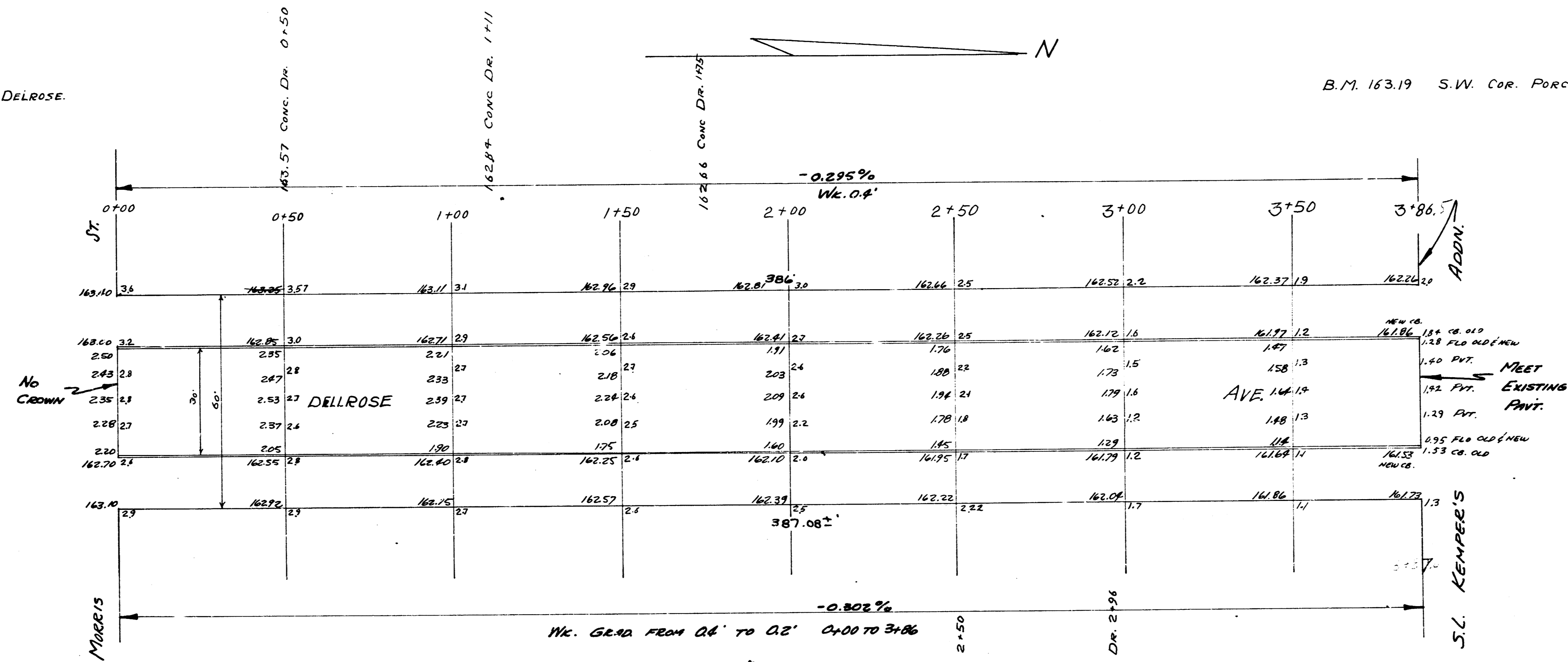


B.M. 165.03 N.E. COR. CON. STEP 801 So. DELROSE.

B.M. 163.19 S.W. COR. PORCH No 719 So DELROSE.



DELROSE AVE.  
 N.L. MORRIS ← S.L. KEMPEE'S ADDN.  
 30' CONC. & CO.  
 CITY OF WICHITA, KANSAS  
 L.K. WHITE CITY ENGINEER  
 4-12-49 PROJ. C19-1B