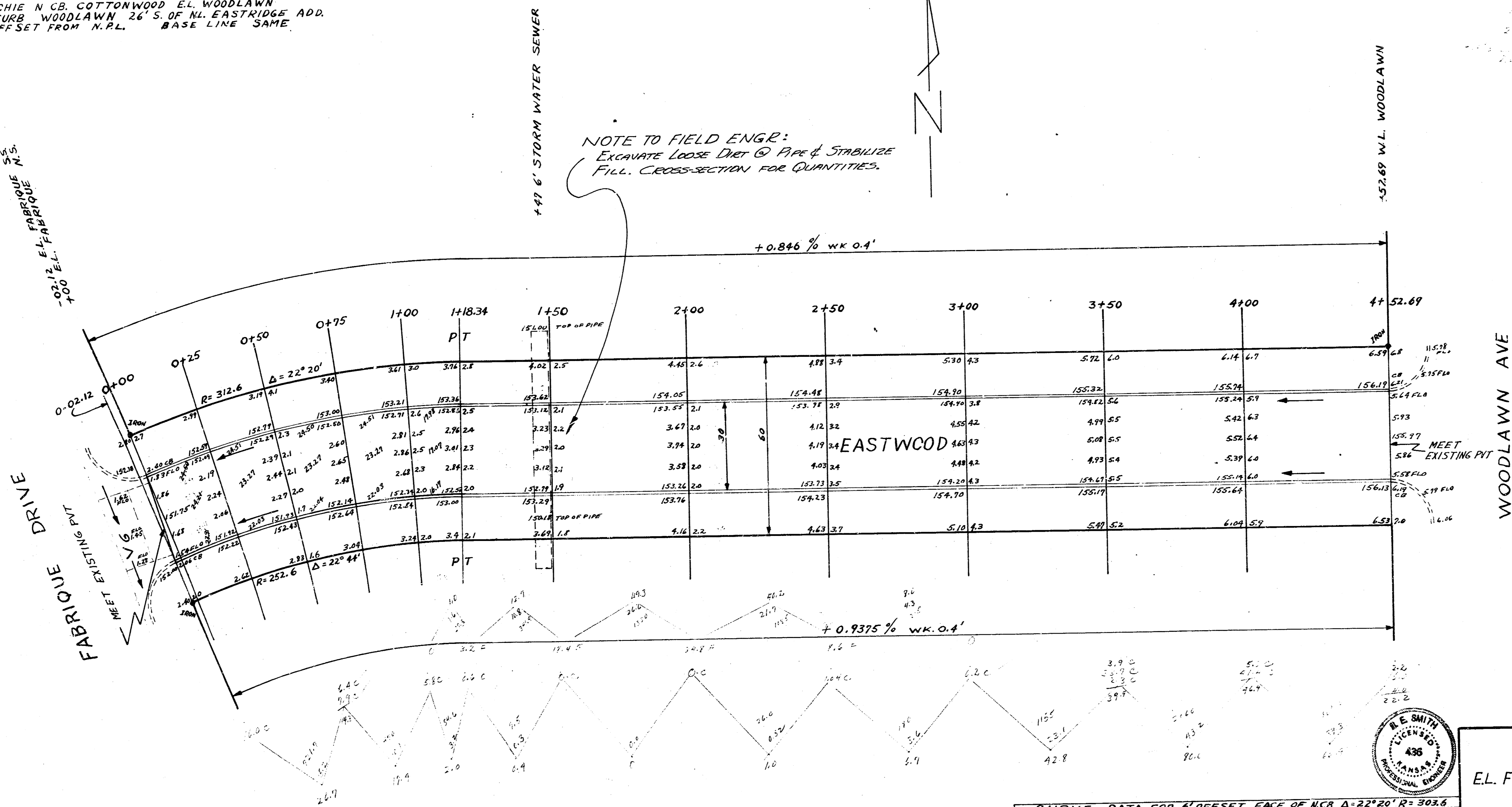


B.M. 156.48 1/2" IN RITCHIE N. CB. COTTONWOOD E.L. WOODLAWN
 E.M. 157.49 "X" IN E. CURB WOODLAWN 26' S. OF N.L. EASTRIDGE ADD.
 STATIONING ON 9' OFFSET FROM N.P.L. BASE LINE SAME



Checked by: BK
 Planning Engineer
 Excavation Engineer
 Checked by: JF

CURVE DATA FOR 6' OFFSET FACE OF CURB Δ=22°20' R=302.6

STATION	ARC LENGTH	CHORD	CHORD BEARING	DEFLECT. L	TOTAL DEFLECT.
0+02.12	2.12	1.83			
0+00 PC					
0+25	25.00	24.94	21.53	2° 21' 32"	2° 21' 32"
0+50	25.00	24.94	21.53	2° 21' 32"	4° 43' 04"
0+75	25.00	24.94	21.53	2° 21' 32"	7° 04' 36"
1+00	25.00	24.94	21.53	2° 21' 32"	9° 26' 08"
1+18.34 PT	18.34	18.22	15.72	1° 50' 58"	11° 17' 06"



EASTWOOD
 E.L. FABRIQUE TO W.L. WOODLAWN
 30' CONC & CB
 CITY OF WICHITA
 B.E. SMITH CITY ENGINEER
 FEB. 1954 PROJ. NO. C13-240