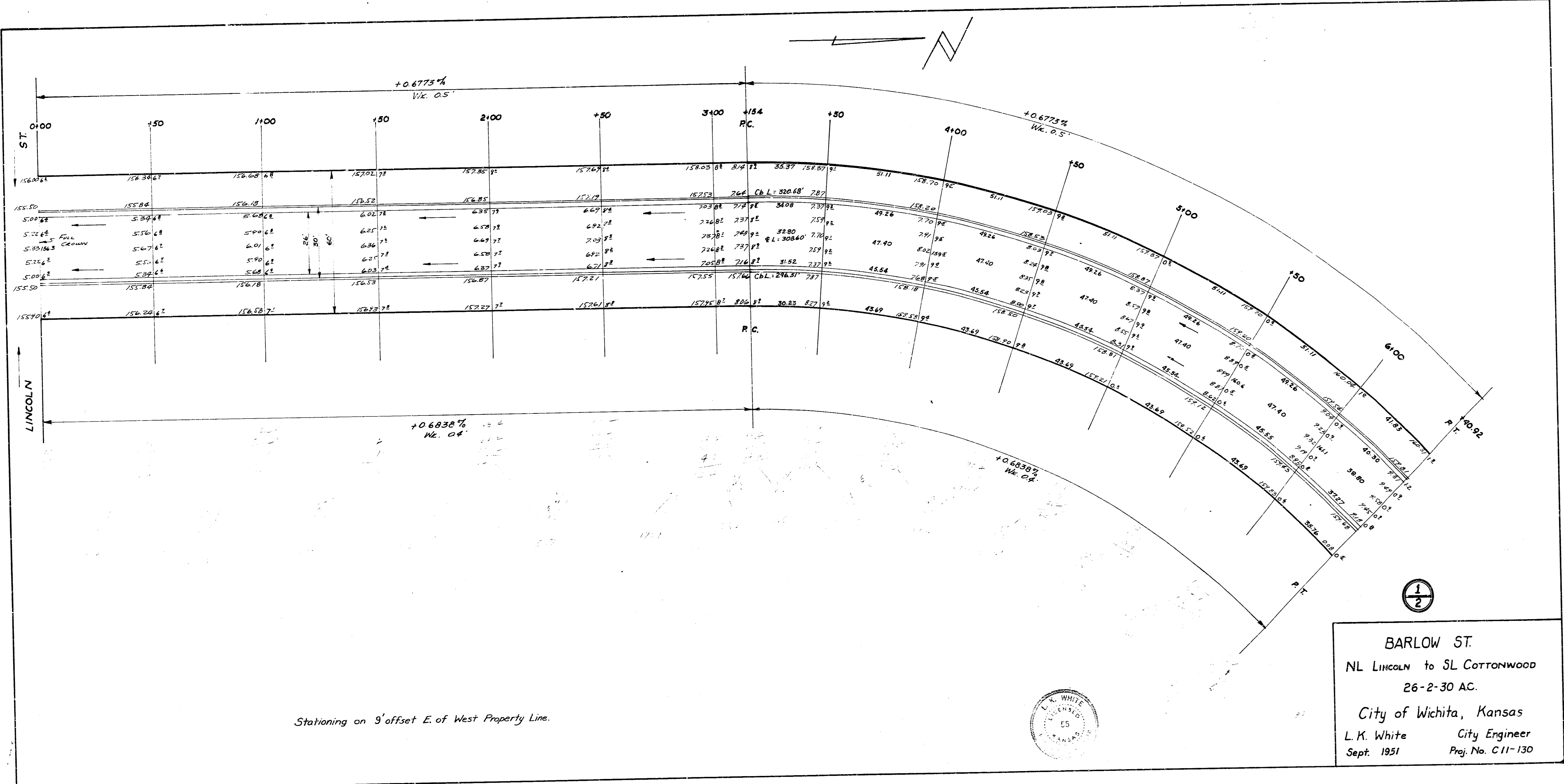
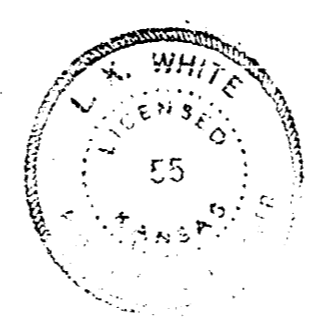


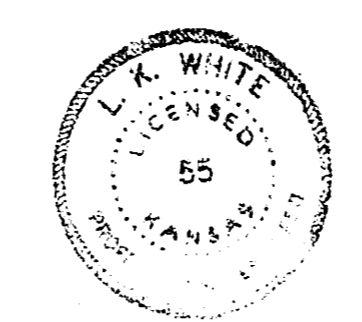
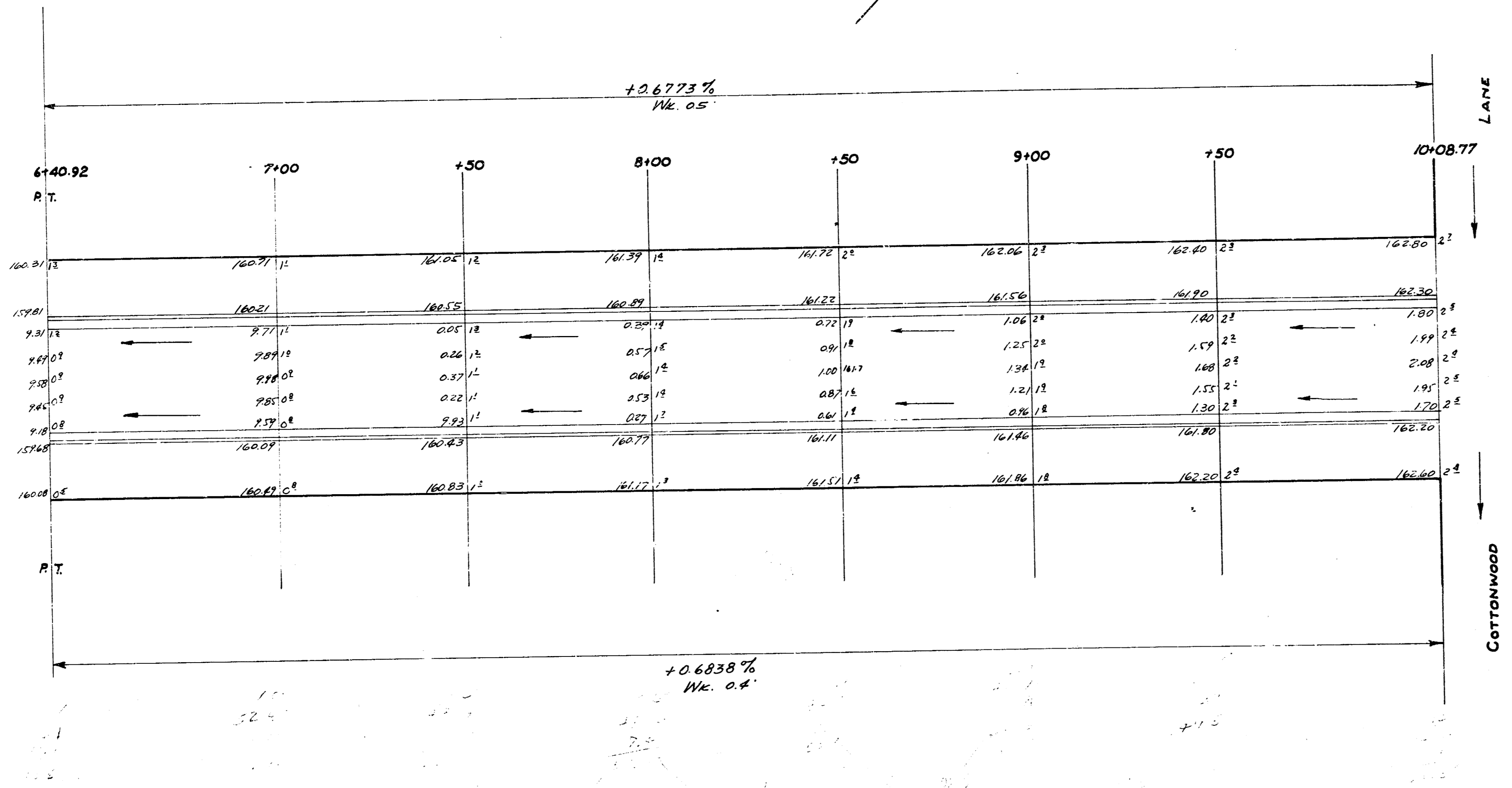
A-3



Stationing on 9' offset E. of West Property Line.



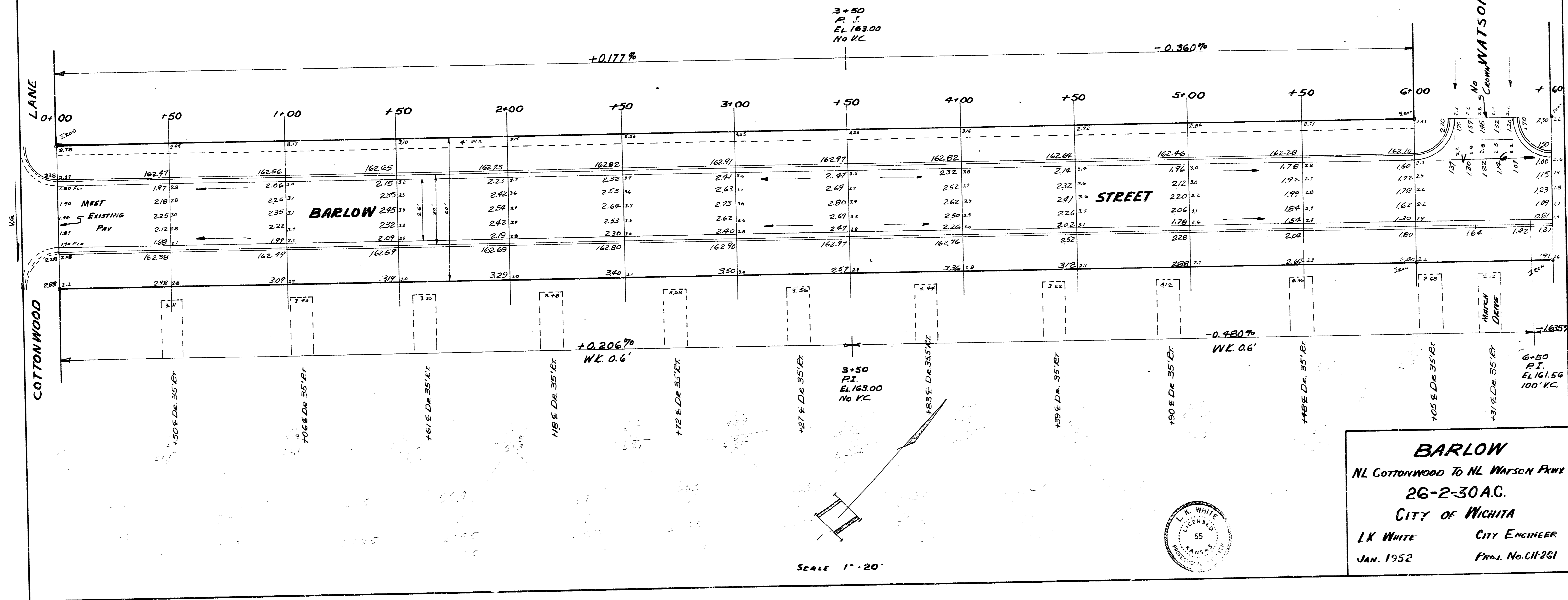
BARLOW ST.
NL LINCOLN to SL COTTONWOOD
26-2-30 AC.
City of Wichita, Kansas
L.K. White City Engineer
Sept. 1951 Proj. No. C-11-130



CHM-68

B.M. 156.87 SW COR. CONC. PAV. HO. #601 NW APACHE & GOVERNOR
 B.M. 156.53 NE COR. CONC. PAV. HO. #602 SW BARLOW & GOV. H.S. 3RD POST
 B.M. 162.75 "F" IN FAKER C. W.L.E. NE COTTONWOOD & BARLOW

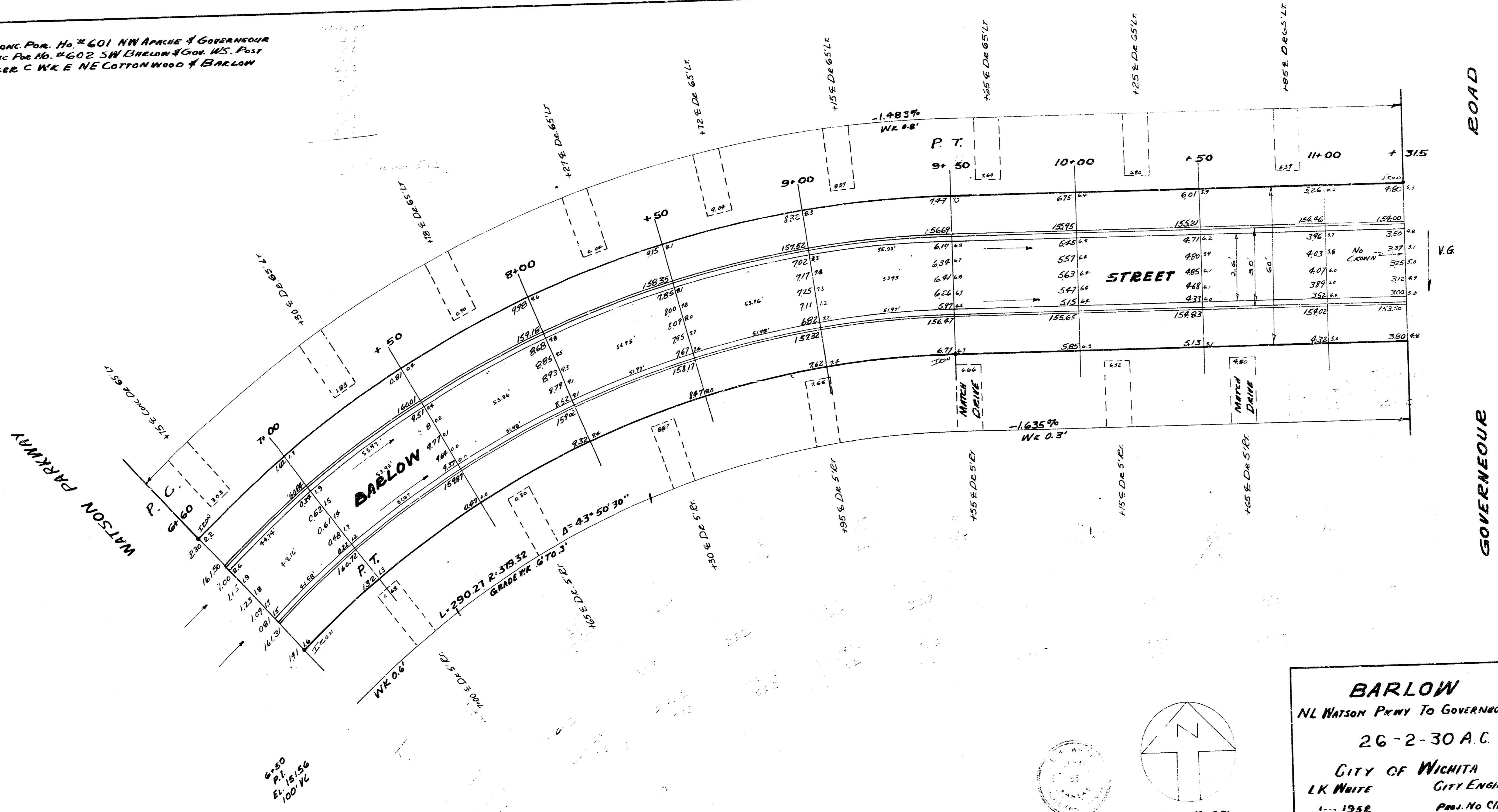
STATIONING ON E



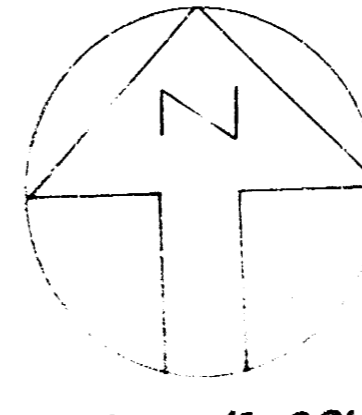
CHM-68

B.M. 156.37 SW Cor. Conc. Pav. No. 601 NW Corner of Gouverneur
B.M. 156.53 NE Cor. Conc. Pav. No. 602 SW Corner of Gov. W.S. Post
B.M. 162.75 'F' IN FAKER C W.K. E NE Cottonwood of Barlow

STATIONING ON SR



BARLOW
 NL Watson Pkwy To Gouverneur
 26-2-30 A.C.
 CITY OF WICHITA
 LK WHITE CITY ENGINEER
 Jan 1958 Proj. No. CH-257



SCALE 1" = 20'