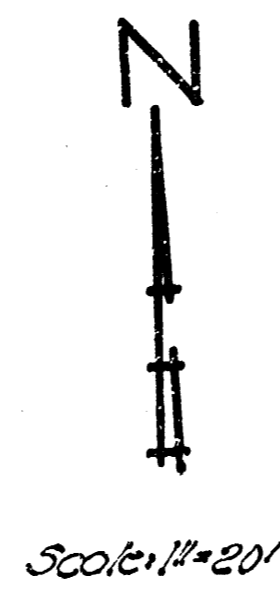
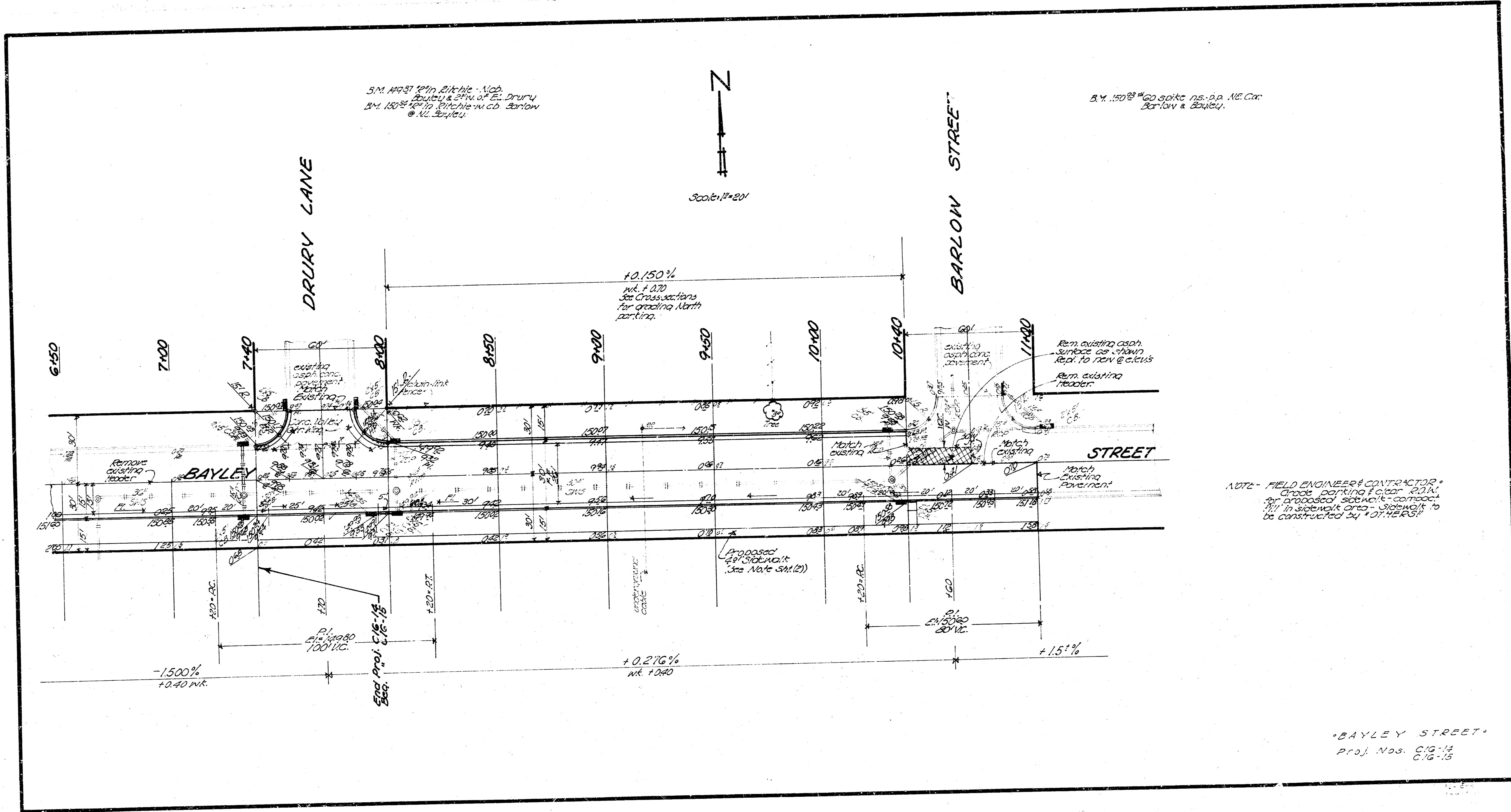


5 M. 119 ST 12" in. ditche - Ndb.
 2' Bayley & 2' N. of E. Drury
 B.M. 100² 12" in. ditche in ab. Barlow
 @ N. Bayley.



B.M. 100² 12" in. ditche in ab. Barlow
 & Bayley.



NOTE - FIELD ENGINEER & CONTRACTOR
 check parking & clear 2' N.
 of proposed sidewalk & construct
 2' in sidewalk area - sidewalk to
 be constructed by OTHERS.

BAYLEY STREET
 Proj. Nos. C/G-14
 C/G-15