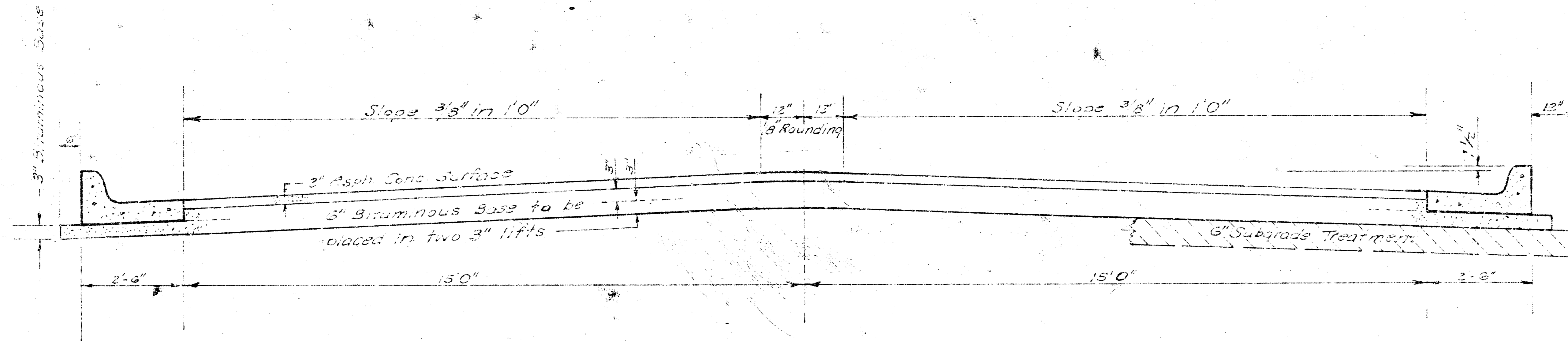


BEECH COURT

E. L. BEECH TO & INCLUDING CUL-DE-SAC

30'-2'-34' ASPH. CONC.

PROJ. NO. DAKS574016



TYPICAL SECTION

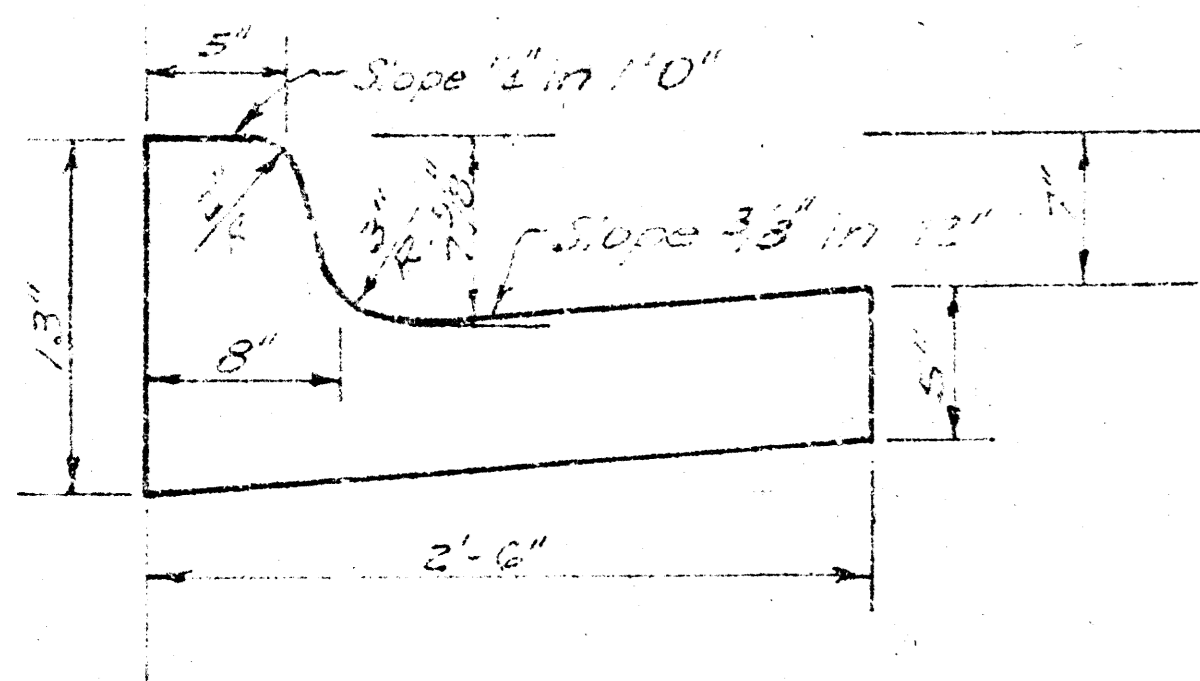
35' ASPHALTIC CONCRETE PAVEMENT WITH BITUMINOUS BASE

*The A.C. Pavement between the comb. curb & gutter shall be paid as Sq. Yds. 3" A.C. Pavement (6" Bituminous Base).
The Bituminous Base under the comb. curb & gutter shall be paid as Sq. Yds. 3" Bituminous Base.*

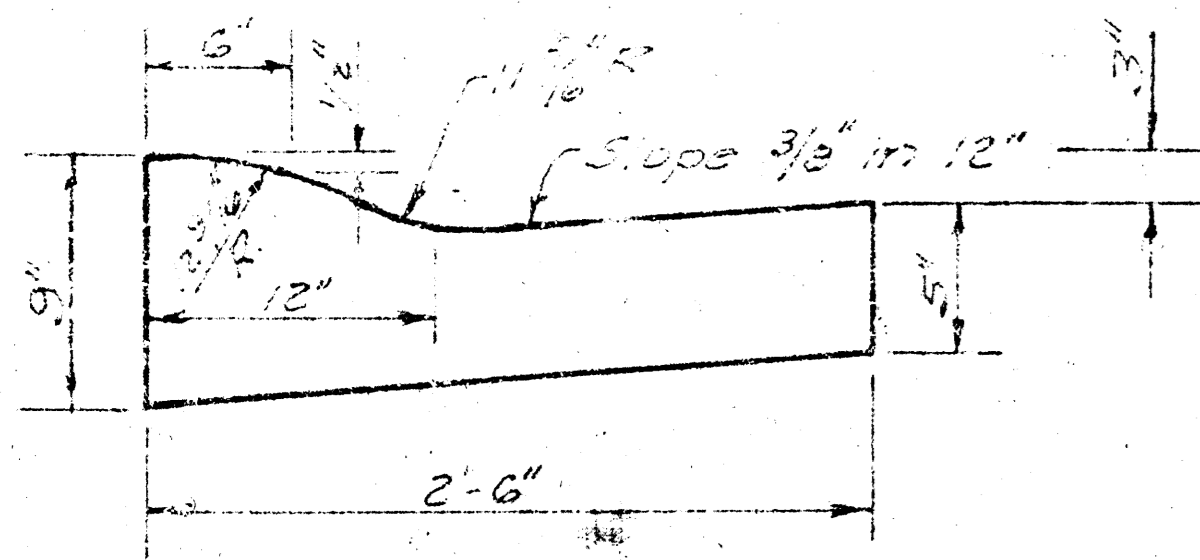
A TACK COAT OF EMULSIFIED ASPHALT (SS-1H) SHALL BE APPLIED AT AN APPROXIMATE RATE 0.05 GALLONS PER SQ YD BETWEEN LIFTS OF ASPHALTIC MATERIALS WHEN ORDERED BY THE ENGINEER. TACK COAT WILL NOT BE PAID FOR DIRECTLY AND SHALL BE CONSIDERED AS SUBSIDIARY TO PRICE BID FOR ASPHALTIC PAVEMENT.

BITUMINOUS BASE AND ASPHALTIC CONCRETE WEARING SURFACE SHALL BE PLACED WITH A LAYDOWN MACHINE HAVING AUTOMATIC ELECTRONIC CONTROLS FOR CROWN AND GRADE. CONSTRUCTION JOINTS IN EACH LIFT SHALL BE STAGGERED A MINIMUM DISTANCE OF 1' WITH JOINTS IN PRECEDING LIFTS AND PLACED SUCH THAT A JOINT WILL BE CONSTRUCTED ON THE CENTERLINE IN THE TOP LIFT.

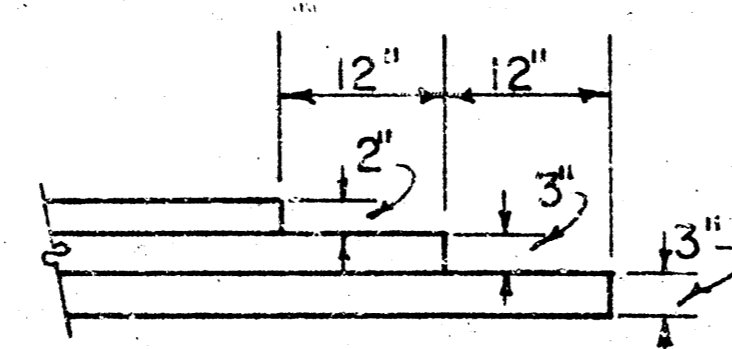
COMBINED CURB & GUTTER



ROLL TYPE CURB & GUTTER



DETAIL OF TRANSVERSE CONSTRUCTION JOINT



TRANSVERSE CONSTRUCTION JOINTS SHALL BE CONSTRUCTED IN FLEXIBLE BASE PAVEMENTS AT LOCATIONS WHERE PAVEMENT TEMPORARILY ENDS TO FACILITATE FUTURE PAVEMENT CONSTRUCTION AS SHOWN BY DETAIL. THE COST OF CONSTRUCTING THE TRANSVERSE CONSTRUCTION JOINTS SHALL NOT BE MEASURED OR PAID FOR DIRECTLY BUT SHALL BE INCLUDED IN THE BID PRICE FOR SQUARE YARDS OF ASPHALTIC CONCRETE PAVEMENT.



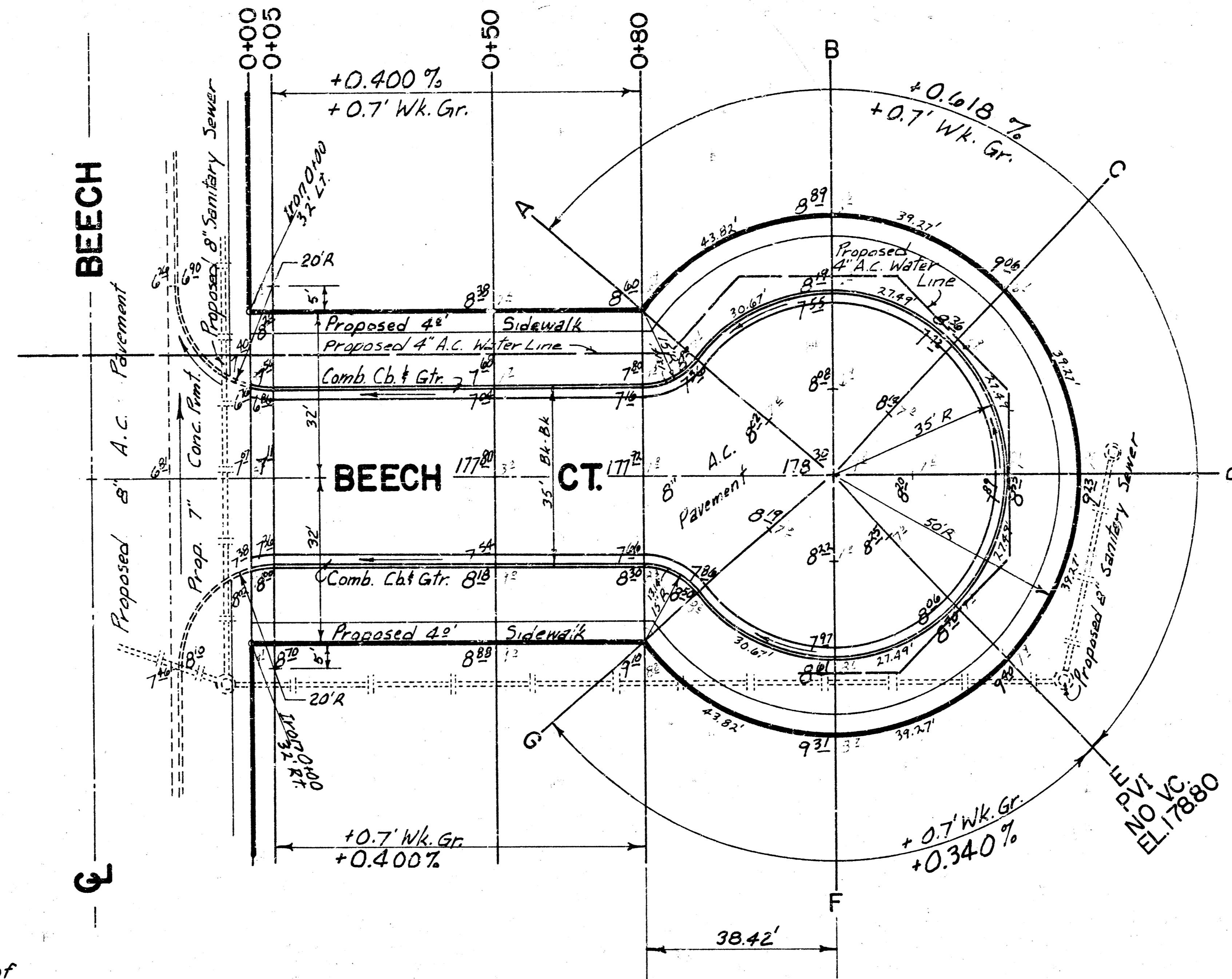
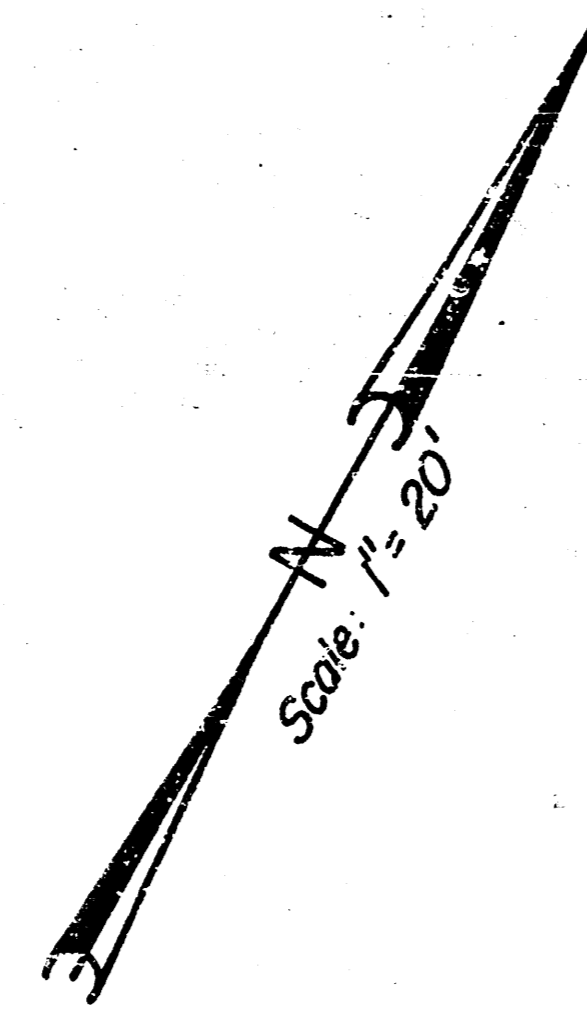
CITY OF WICHITA, KANSAS

DEPARTMENT of PUBLIC WORKS - Engineering
Division.

R. W. LINN CITY ENGINEER

DATE _____ Proj. No. _____

BM=184.60-R.R. SPIKE TOP 2' GUARD POST E. SIDE WEBB RD. APPROX. 100' N. OF N. L. BEDELL W.
 BM=176.15-IRON IN THIMBLE 1/4 SEC. COR. LINCOLN & WEBB RD.



NOTE TO FIELD ENGINEER AND CONTRACTOR:

LIME SLUDGE, WHICH IS A BY-PRODUCT OF ACETYLENE GAS PRODUCTION, MAY BE USED AS A STABILIZING AGENT IN PLACE OF HYDRATED LIME OR QUICK LIME WITH THE APPROVAL OF THE ENGINEER. COMPLETED CONSTRUCTION MUST BE EQUAL TO THAT WHICH COULD BE ACCOMPLISHED IF HYDRATED LIME OR QUICK LIME HAD BEEN USED.

Note: Field Engineer to determine type of subgrade treatment. Subgrade treatment may consist of lime treatment, cement treatment, subgrade modification or any combination of these.

Note: Contractor to clear R/W and grade. Parking for sidewalk. Compact fill in walk areas. Sidewalk by "Others."

Note: Utility locations shown are approximate. Contractor to determine exact location in field.

Base Line is ϵ Beech Court

- EARTHWORK -

	Excavation	Comp. Fill
Quantity	209.6 C.Y.	86.8 C.Y.
+10%	21.0 C.Y.	8.7 C.Y.
Total	230.6 C.Y.	95.5 C.Y.

BEECH COURT
 E. L. BEECH TO & INCLD. CUL-DE-SAC
 30'-2'-34' ASPH. CONC.
 CITY OF WICHITA, KANSAS
 R. W. LINN — CITY ENGINEER
 DATE: PROJ. NO. DAKS574016