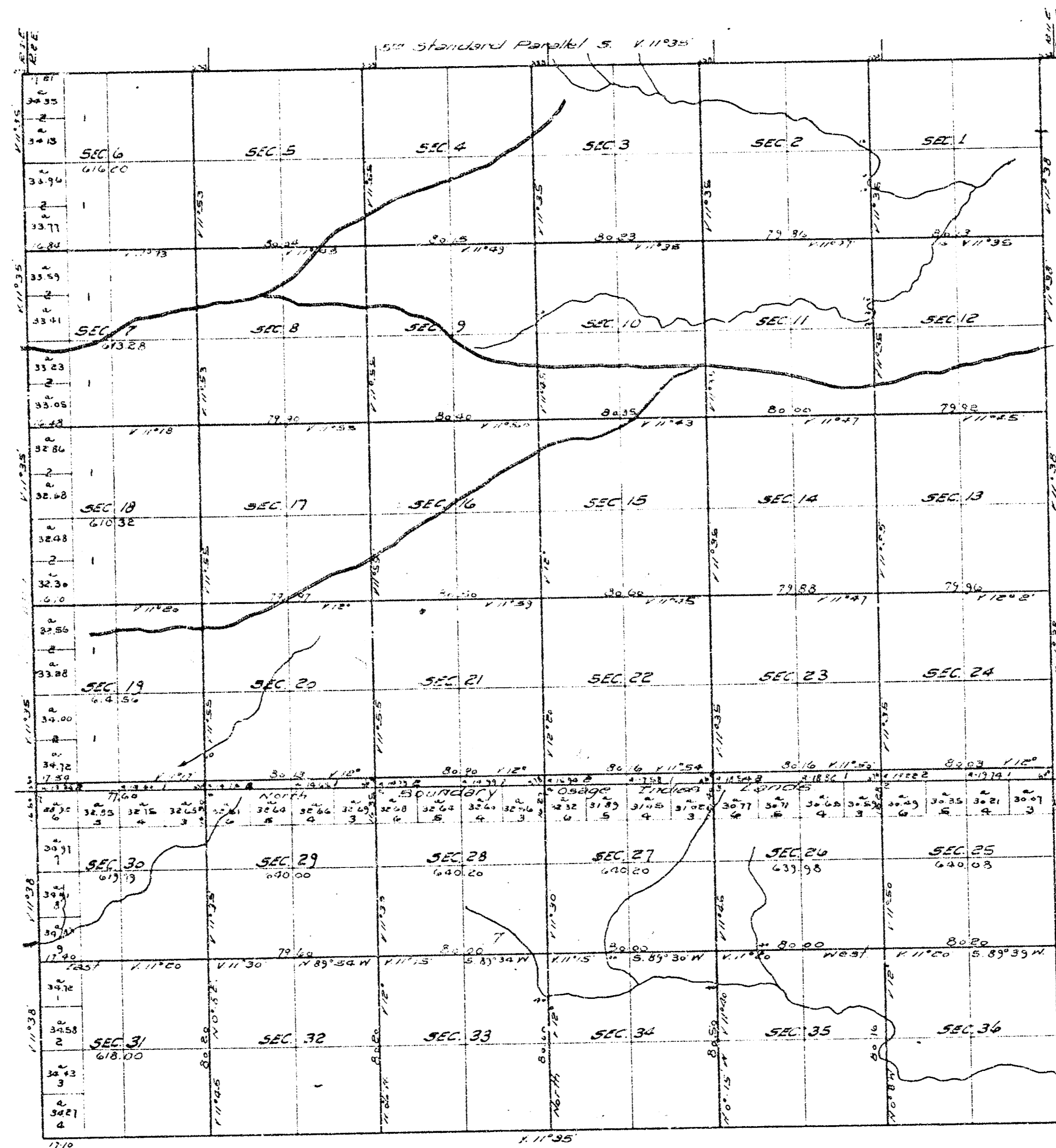


TOWNSHIP No. 26 SOUTH OF RANGE No. 2 EAST OF THE 6<sup>TH</sup> PRINCIPAL MERIDIAN, KAN.

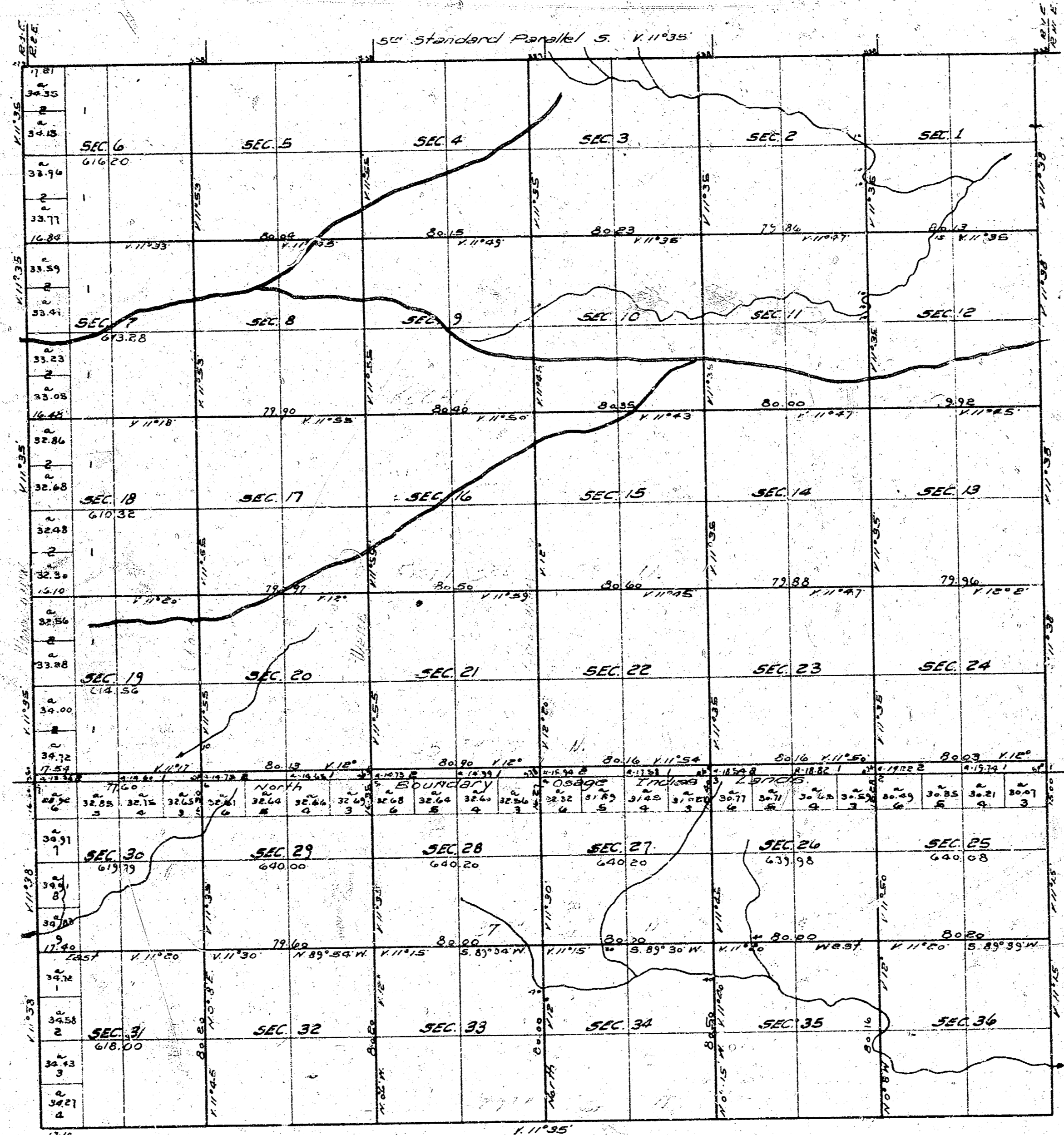


Scale 40 Chains to one Inch  
Variations of the needle East

The above Map of Township No. 26 South of Range No. 2 East of the  
6<sup>th</sup> Principal Meridian Kansas, is a true copy of the original plat  
Surveyor General's Office  
Lawrence, Kan. July 26-1876  
C. W. BABCOCK  
Surveyor General

Copied Oct. 23-1930.  
By: RAMSON H. BROWN  
County Surveyor

TOWNSHIP No. 26 SOUTH OF RANGE No. 2 EAST OF THE 6<sup>TH</sup> PRINCIPAL MERIDIAN, KAN.



Scale 40 Chains to one Inch.  
Variations of the needle East.

The above Map of Township No. 26 South of Range No. 2 East of the  
6<sup>th</sup> Principal Meridian, Kansas, is a true copy of the original plat  
Surveyor General's Office  
Lawrence, Kan. July 24-1872. C.W. BABCOCK  
Surveyor General

Copied Oct. 23, 1930.  
By RANSOM H. BROWN  
County Surveyor