

NORTH EXTENSION
CENTURY II RIVER PLAZA
FOR
URBAN RENEWAL AGENCY
OF THE WICHITA, KANSAS METROPOLITAN AREA
PROJECT NO. KANS. R-19

BOARD OF COMMISSIONERS

DR. O.H. CURRY
CHAIRMAN

DONALD H. ALLDRITT
COMMISSIONER

WILLIAM D. ANDERSON
COMMISSIONER

JAMES L. GARDNER
COMMISSIONER

ALBERT L. KAMAS
COMMISSIONER

KENNETH H. KITCHEN
EXECUTIVE DIRECTOR

INDEX OF SHEETS

- I. TITLE SHEET
- IA PLAN
- IB GENERAL PLAN
- 2 CROSS SECTIONS AND DETAILS
- 3 DETAILS
- 4 SIDEWALK EXPANSION JOINT & CUTTING PLAN
- 5 GRADING PLAN
- 6 ELECTRICAL PLAN

THE PREPARATION OF THIS DOCUMENT WAS FINANCED IN PART THROUGH A FEDERAL ADVANCE FROM THE RENEWAL ASSISTANCE ADMINISTRATION OF THE DEPARTMENT OF HOUSING AND URBAN DEVELOPMENT UNDER THE PROVISIONS OF TITLE I OF THE HOUSING ACT OF 1949, AS AMENDED.

OFFICE COPY
Final Plans.
Sent Tulsa 4/24/71
Letter Approval from Tulsa 4/30/71

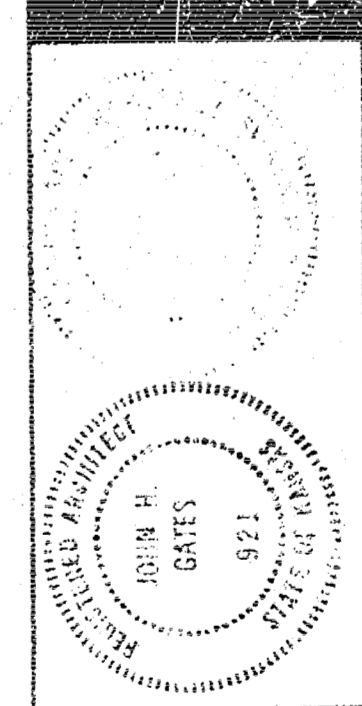
oblinger-smith
 Planning Consultants /
 Landscape Architects
 625 First National Bank Building
 Wichita, Kansas

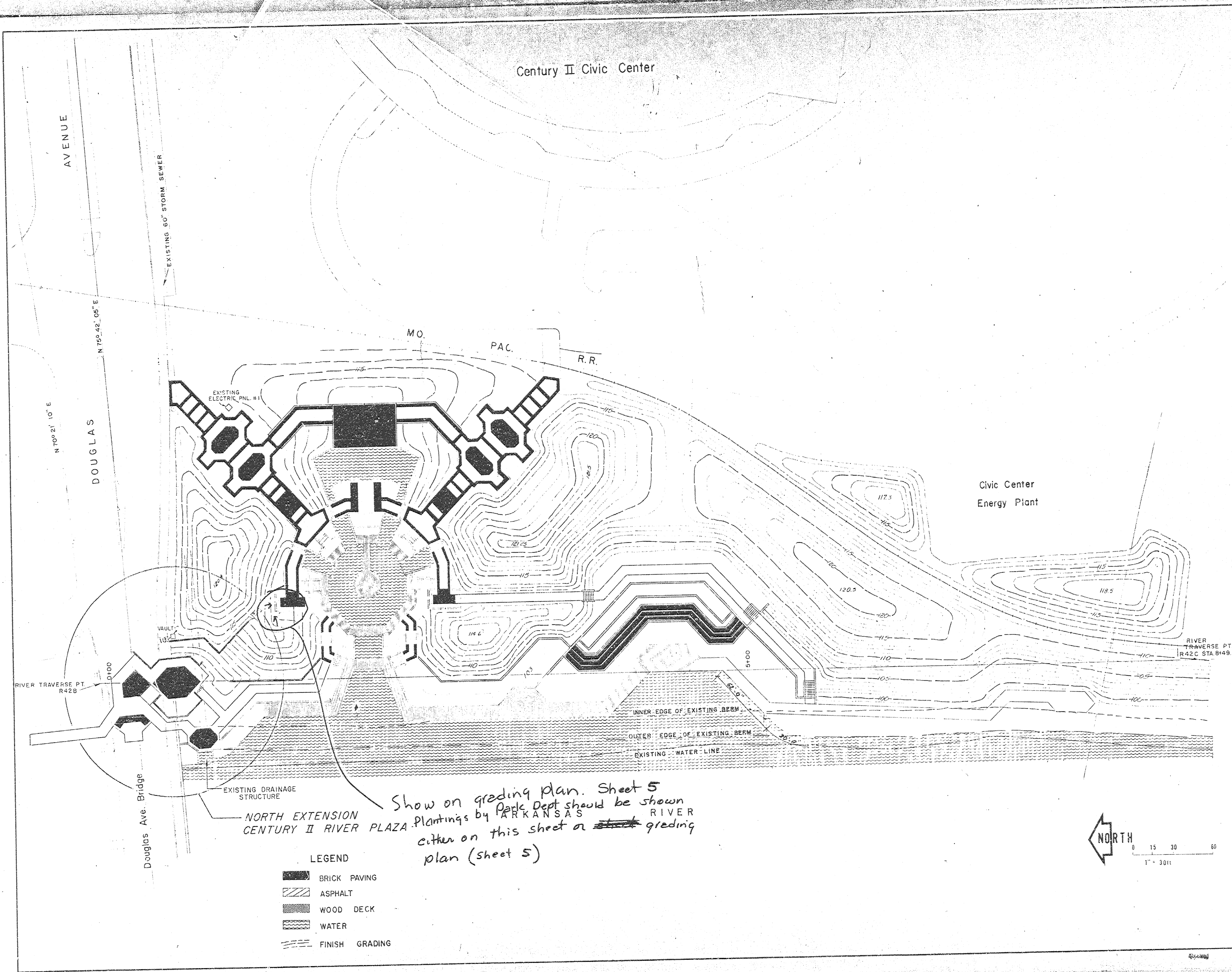
REVISIONS
 4/14/71

SHEET TITLE
 TITLE SHEET
 DATE
 JAN. 11, 71

PROJECT
 NORTH EXTENSION
 CENTURY II RIVER PLAZA
 URA NO. R-19
 SHEET NUMBER 1 OF 6 SHEETS

JOHN GATES
 Architect
 605 First National Bank
 Wichita, Kansas 67202





Century II Civic Center

Civic Center Energy Plant

AVENUE

DOUGLAS

MO. PAC. R.R.

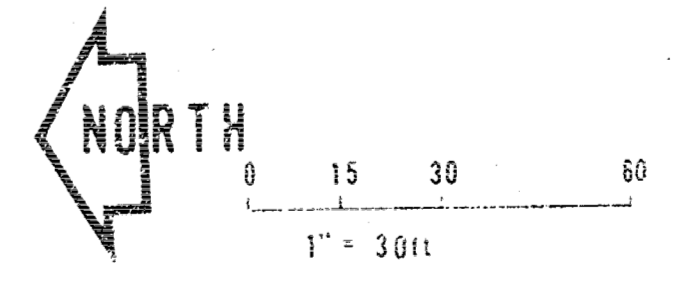
RIVER TRAVERSE PT. R42B

RIVER TRAVERSE PT. R42C STA. 81+9.67

NORTH EXTENSION PLAZA
CENTURY II RIVER PLAZA

- LEGEND
- BRICK PAVING
 - ASPHALT
 - WOOD DECK
 - WATER
 - FINISH GRADING

*Show on grading plan. Sheet 5
Plantings by ARKANSAS RIVER
either on this sheet or ~~sheet~~ grading
plan (sheet 5)*



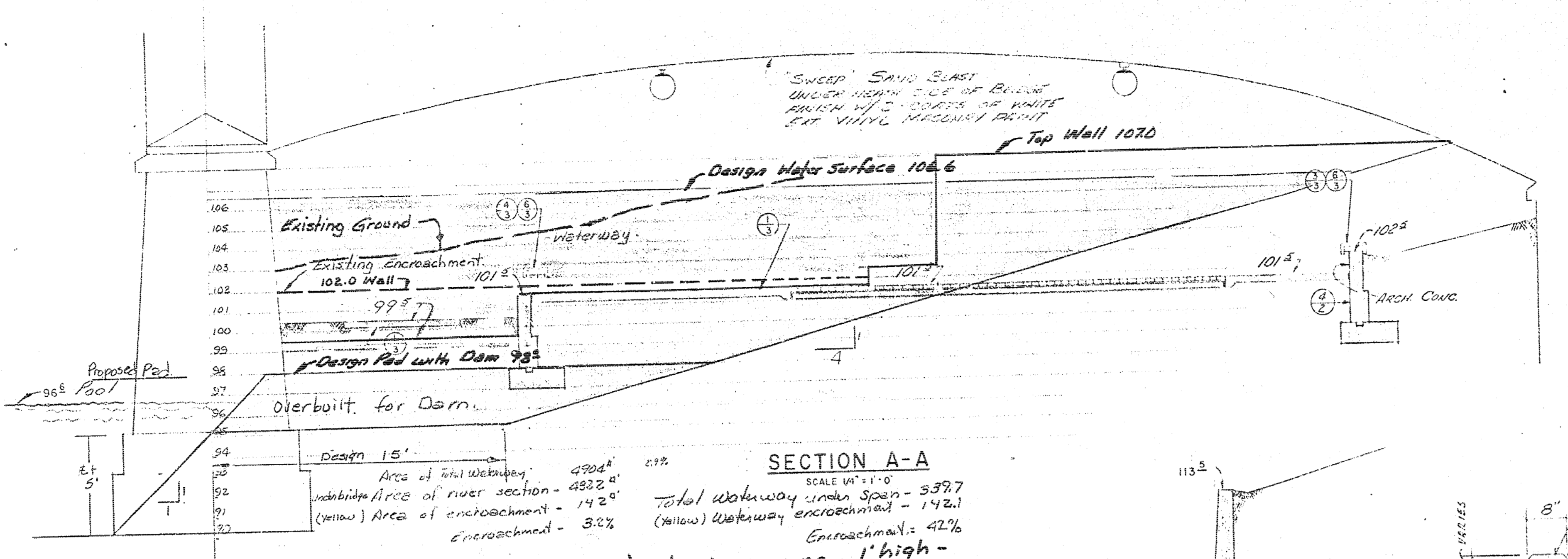
oblinger-smith
Planning Consultants /
625 First National Bank Building
Wichita, Kansas

REVISIONS

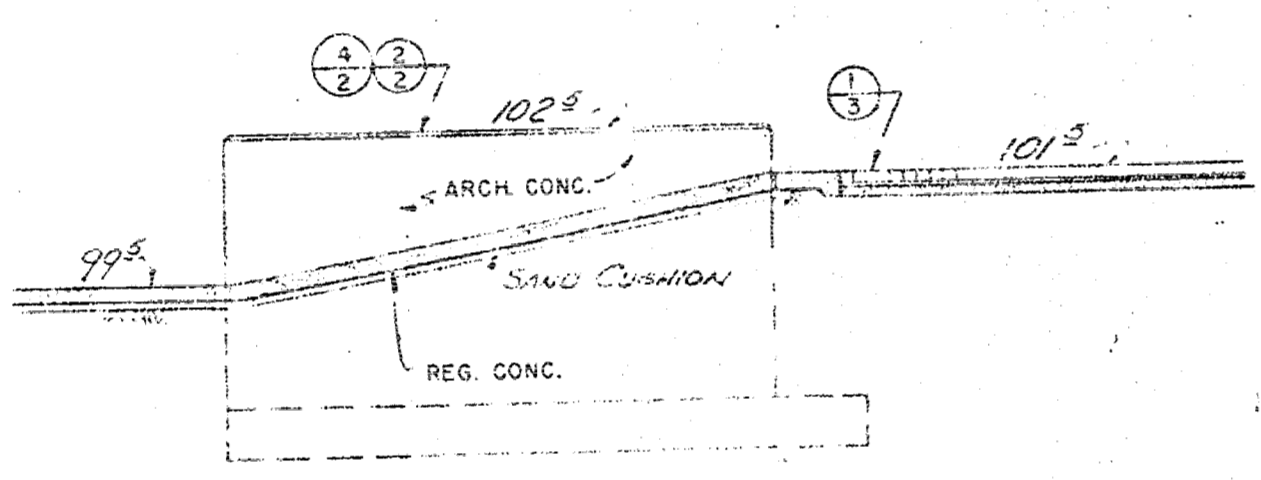
SHEET TITLE
PLAN
DATE JAN 11, 71

PROJECT
NORTH EXTENSION
CENTURY II RIVER PLAZA
URA NO. R-19
SHEET NUMBER 1 A OF 8 SHEETS

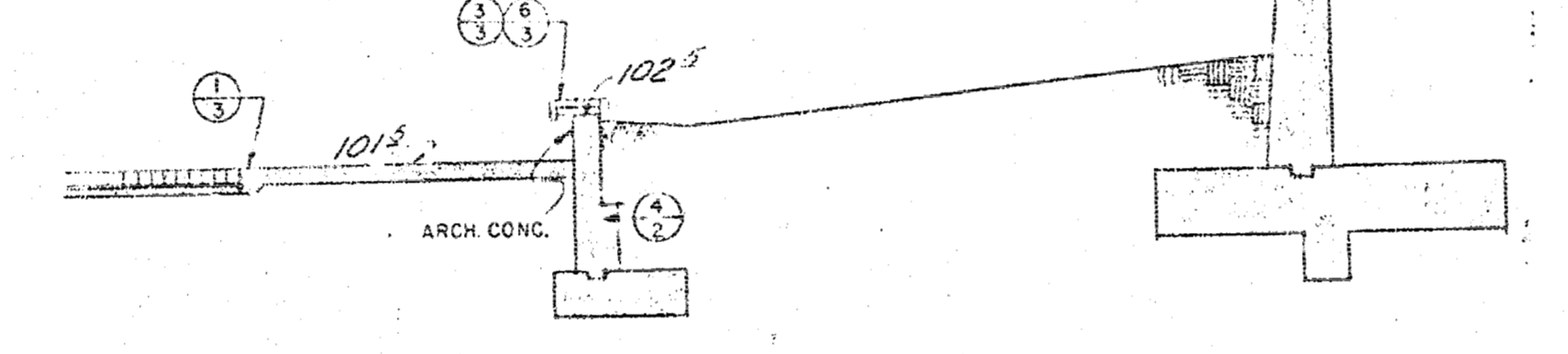
JOHN GATES
Architect
602 First National Bank
Wichita, Kansas 67202



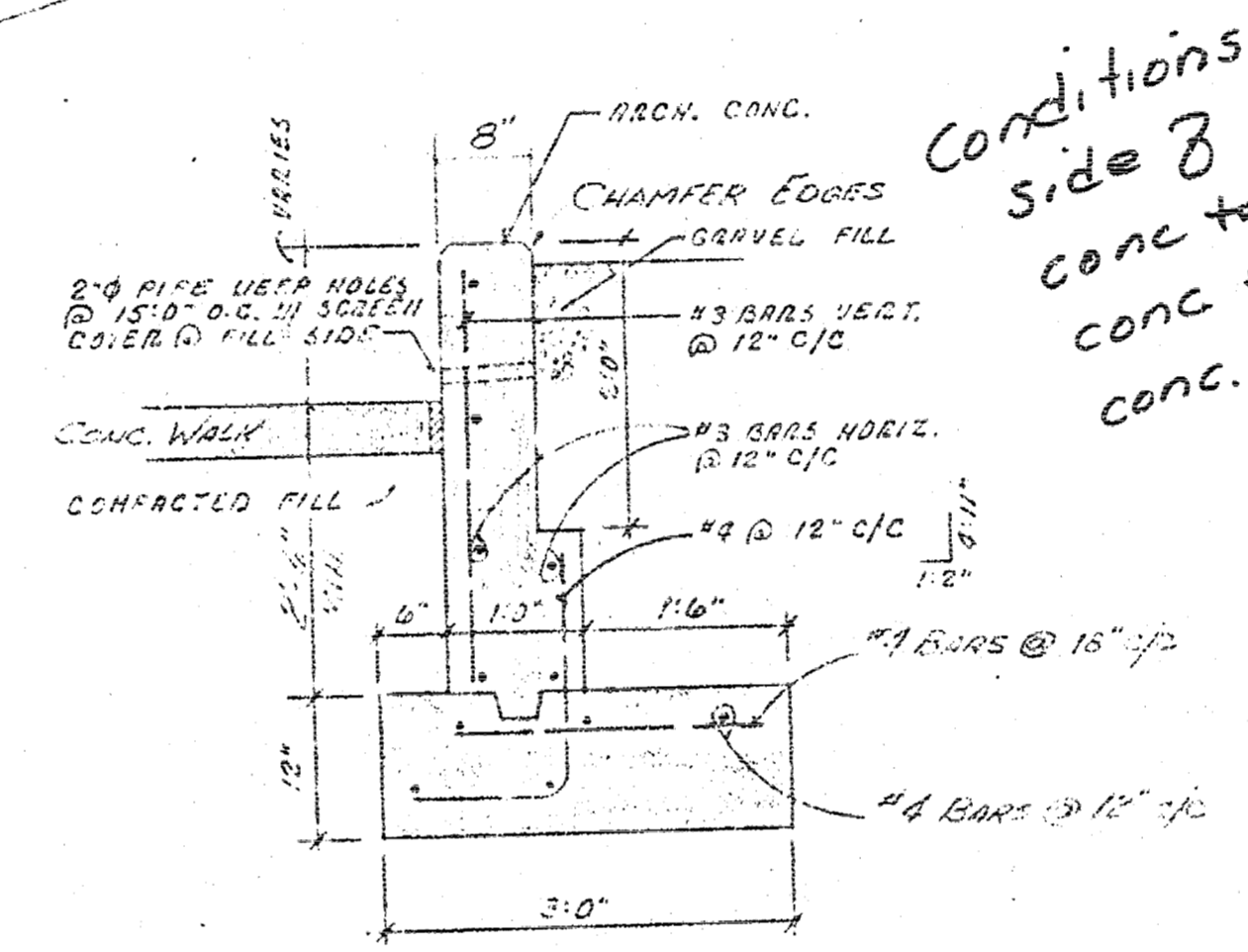
1. First landing (99.5) drawn wrong - 1' high - drawn @ 100.0



SECTION B-B
SCALE 1/4" = 1'-0"

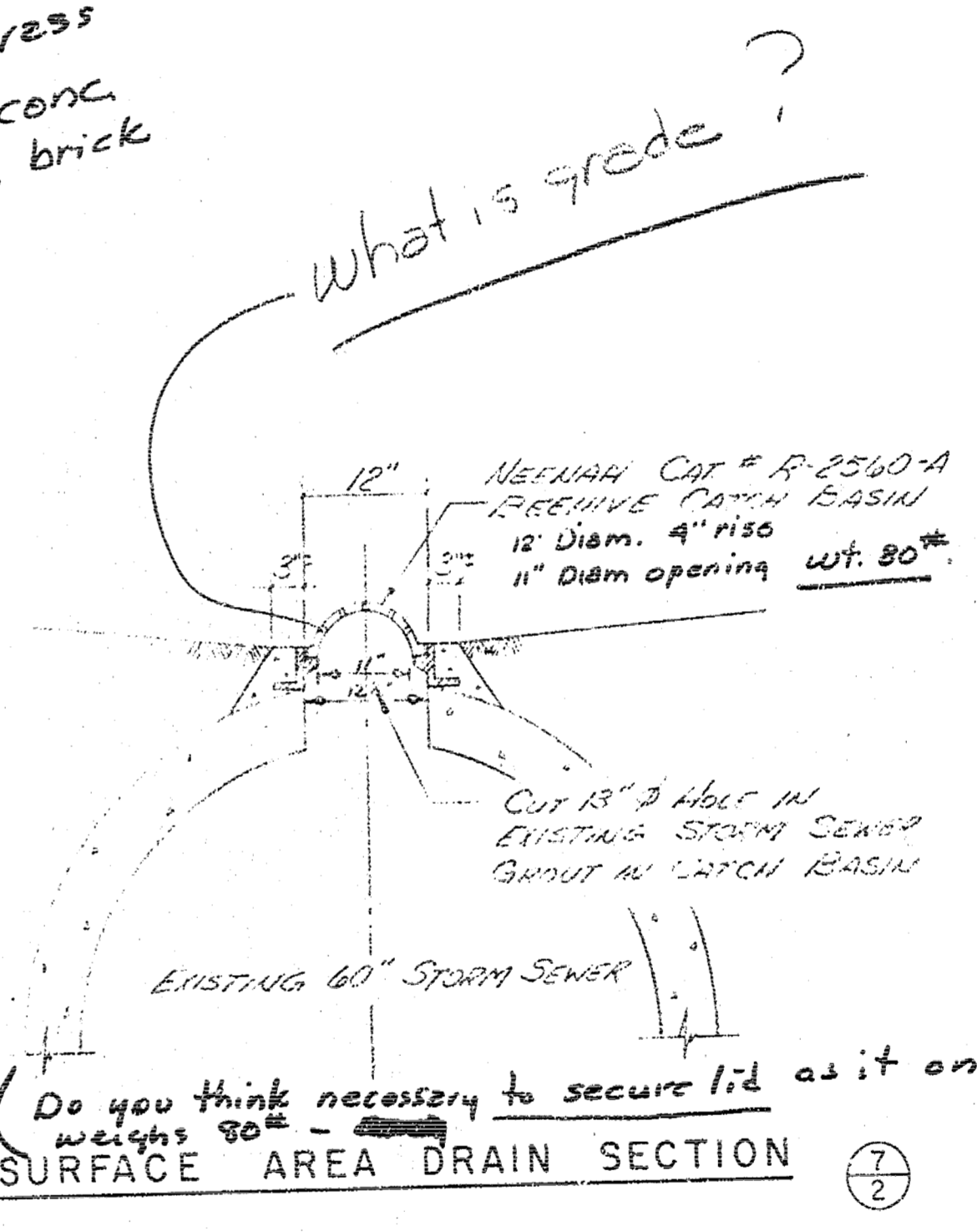


SECTION C-C
SCALE 1/4" = 1'-0"

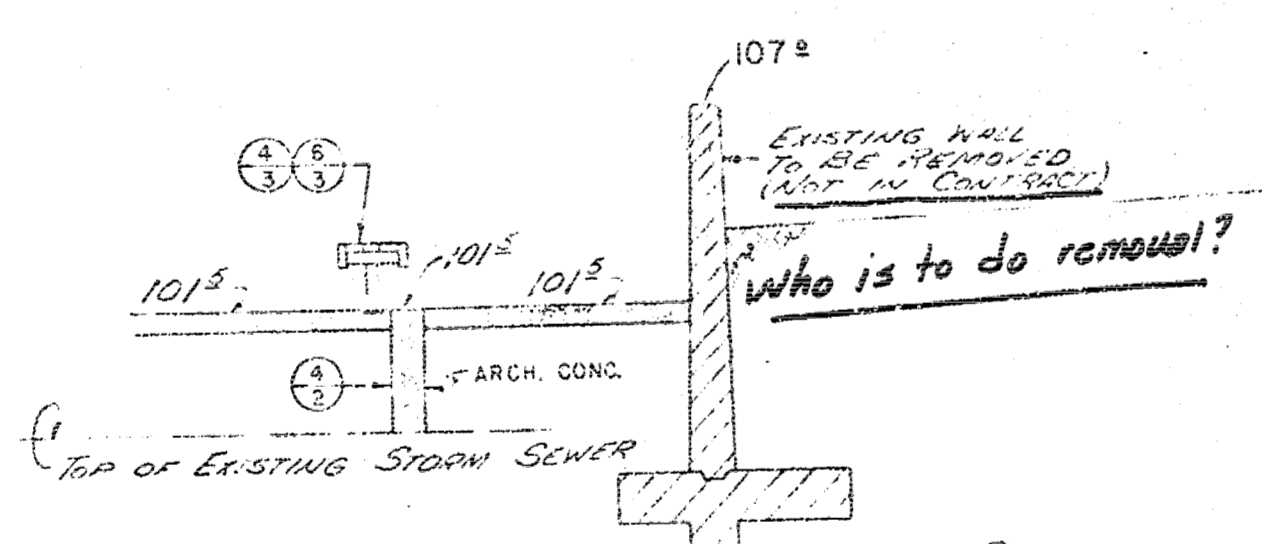


WALL SECTION
SCALE 3/4" = 1'-0"

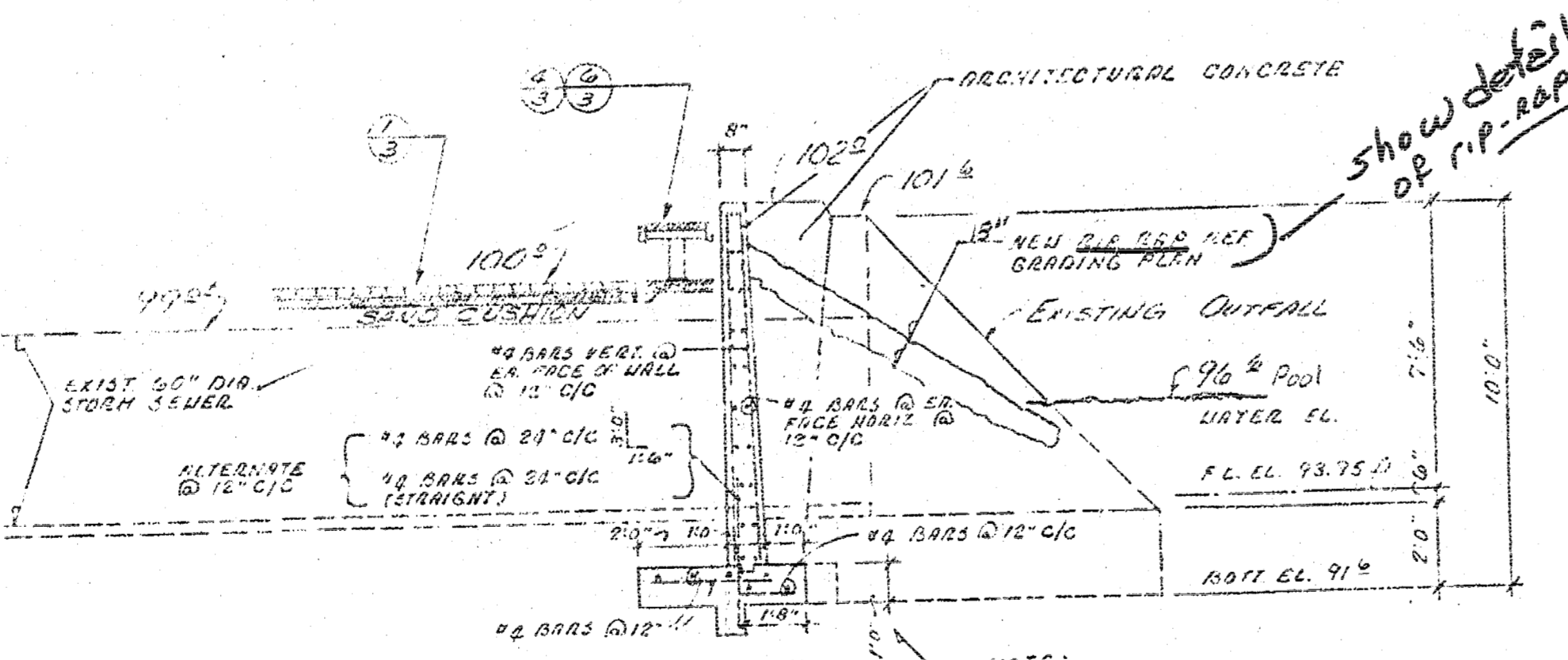
Conditions either side of wall vary
conc to grass
conc to conc
conc. to brick



SURFACE AREA DRAIN SECTION
SCALE 1/2" = 1'-0"

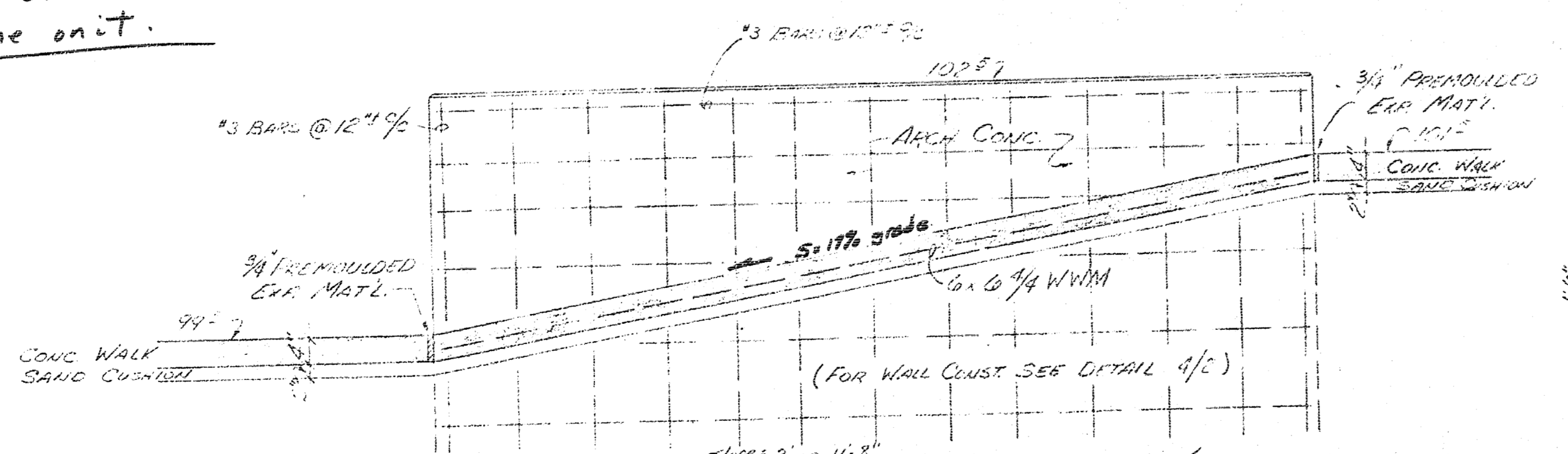


How much of wall to be removed?
How will grading look after removal?
This view needs some more work done on it.

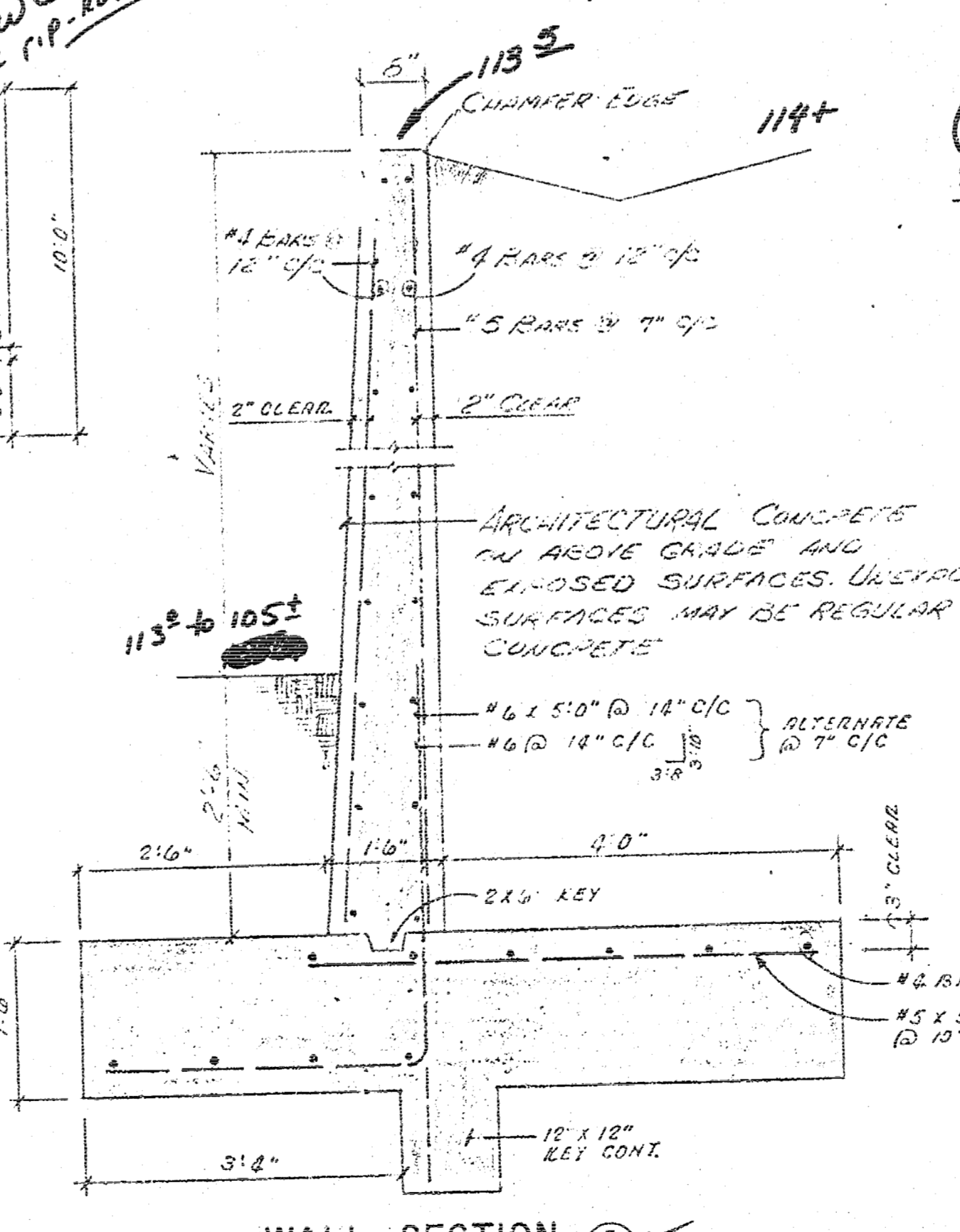


SECTION E-E
SCALE 1/4" = 1'-0"

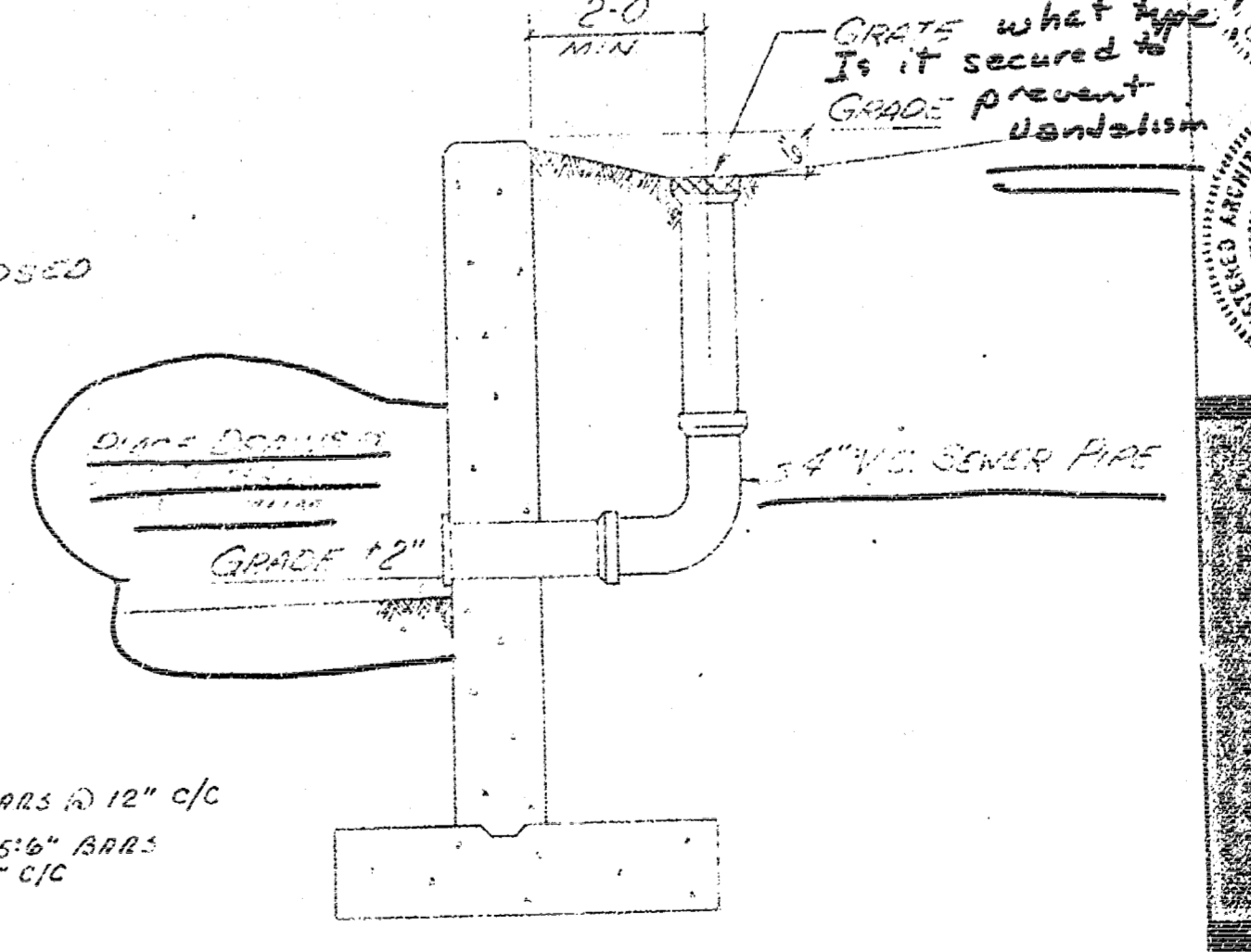
NOTE:
REMOVE #4 BARS @ 12\"/>



WALL DETAIL FOR RAMP
SCALE 3/4" = 1'-0"



WALL SECTION
SCALE 3/4" = 1'-0"



RETAINING WALL DRAIN SECTION
SCALE 1/2" = 1'-0"

obinger-smith
 Planning Consultants
 625 First National Bank Building
 Wichita, Kansas
 67202

PROJECT
 NORTH EXTENSION
 CENTURY II RIVER PLAZA
 URA NO. R-19

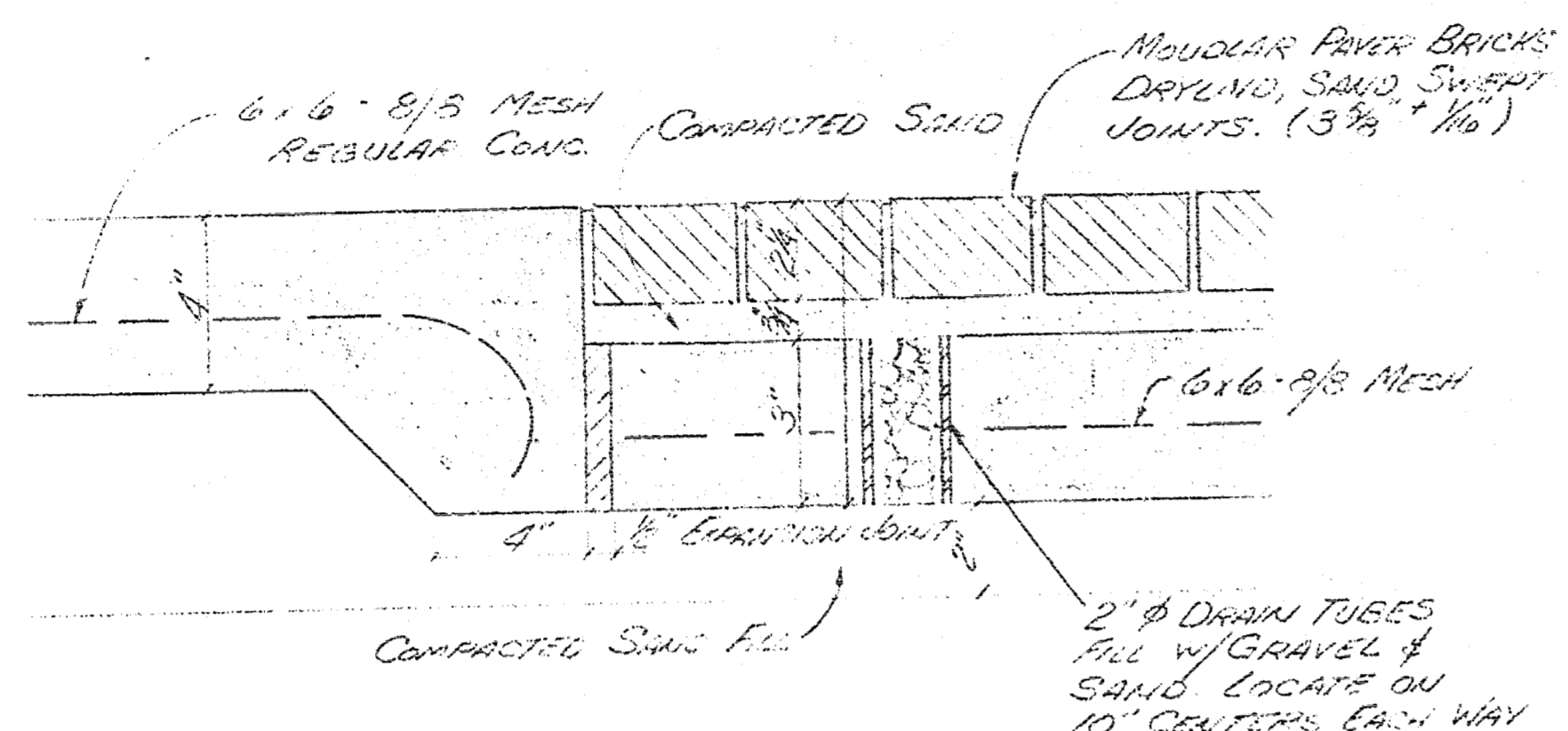
SHEET TITLE
 CROSS SECTIONS
 AND
 DETAILS

SHEET NO.
 2 OF 8

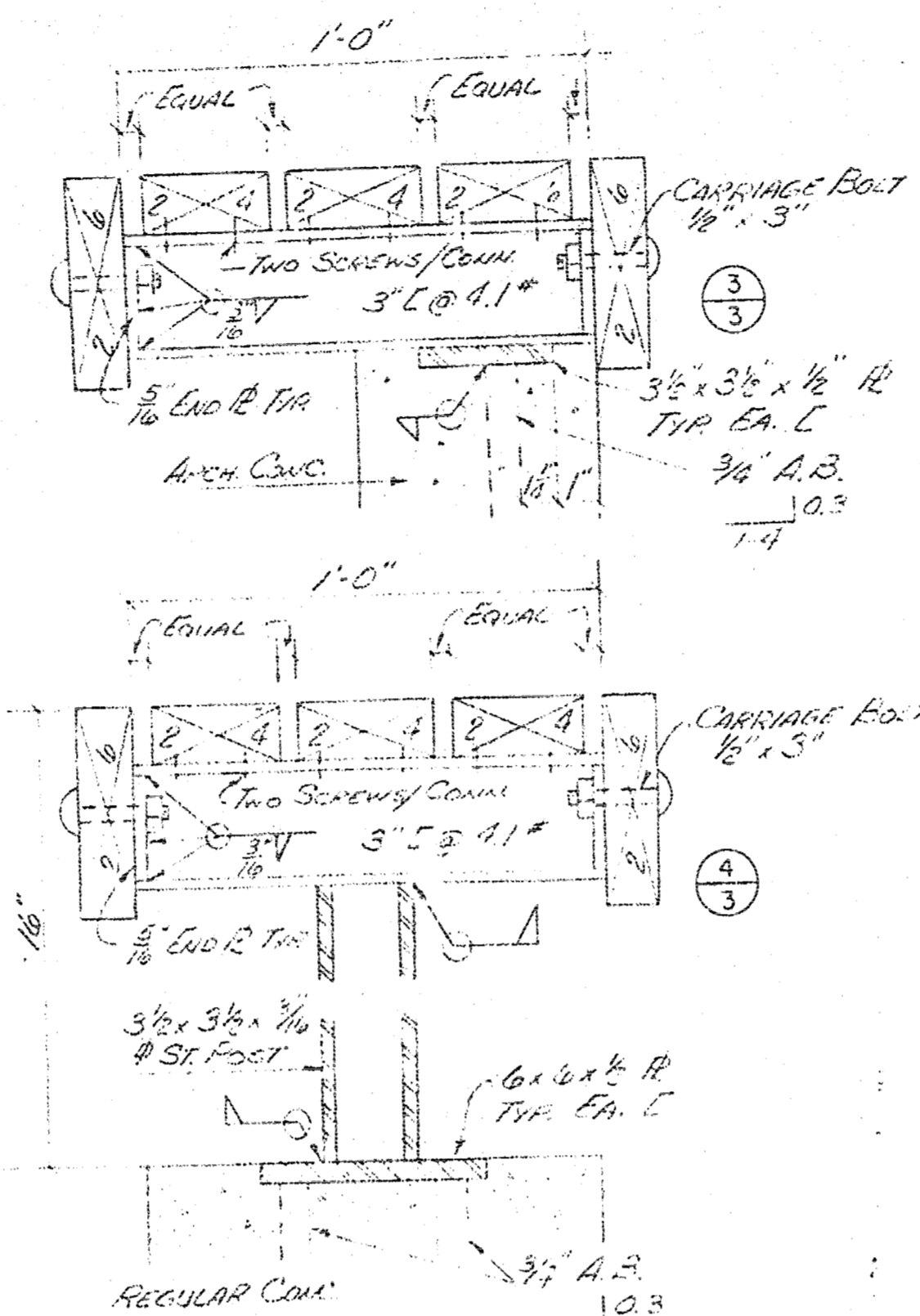
DATE
 JAN. 11, 71

SHEETS
 8

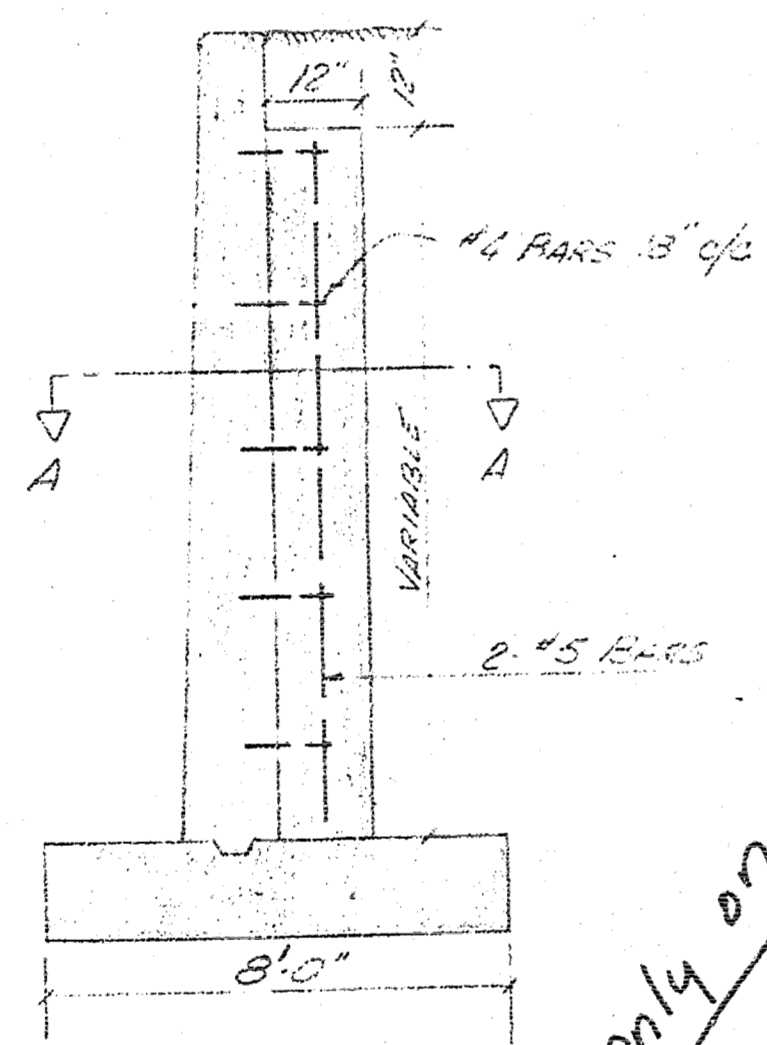
APRIL 6 1971



TYP WALK SECTION
SCALE: 3" = 1'-0"

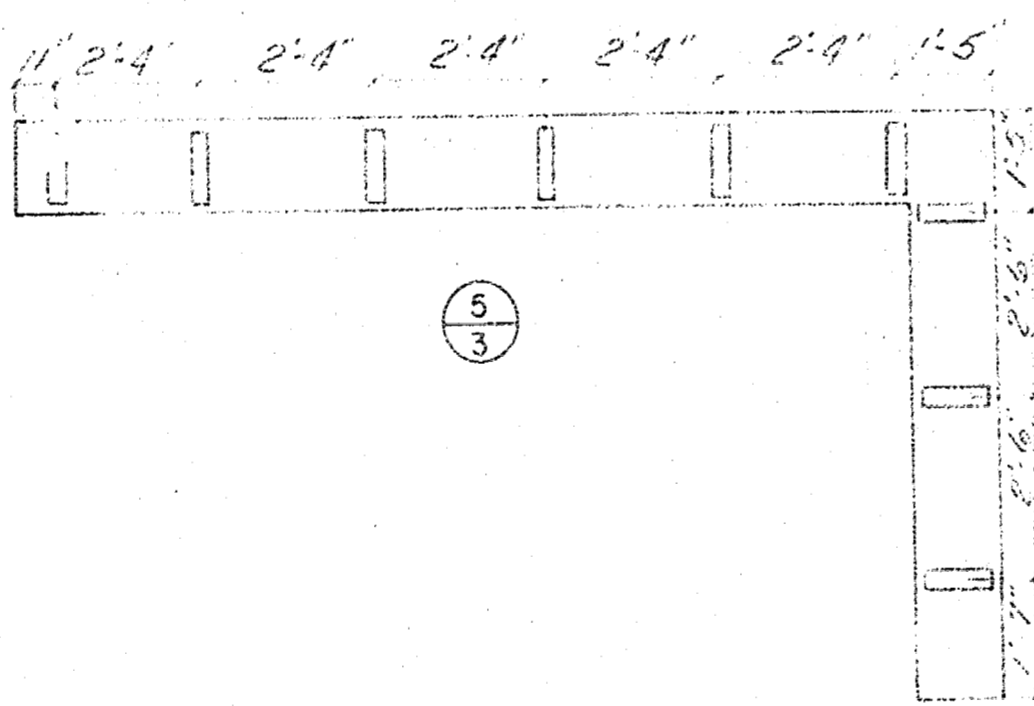


REDWOOD BENCH DETAILS
SCALE: 3" = 1'-0"

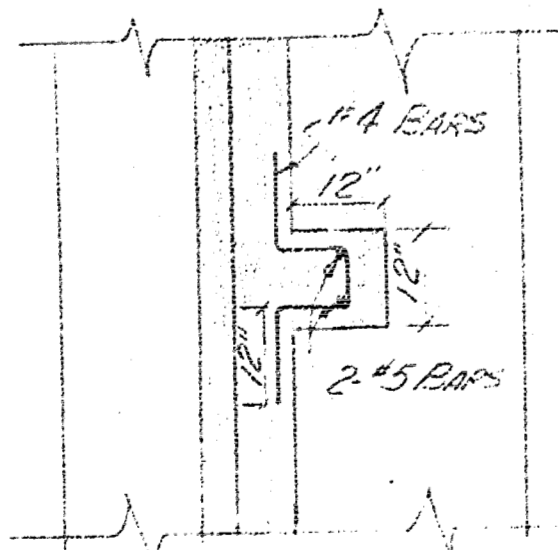


DETAIL OF WALL COLUMN
SCALE: 1/2" = 1'-0"

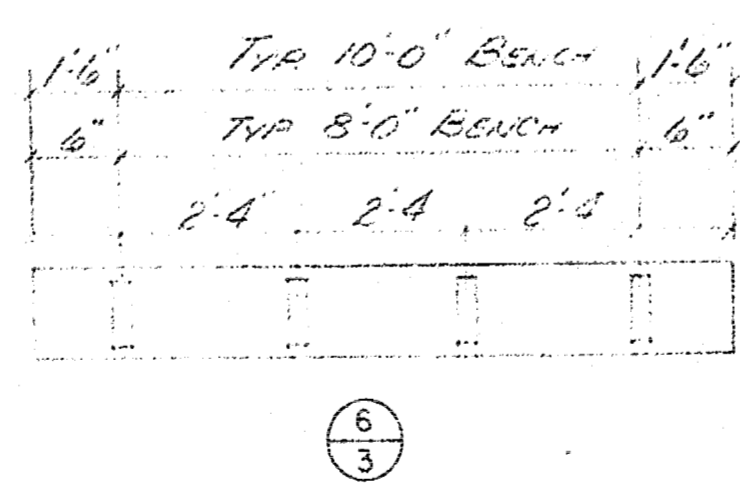
only on 113 wall



BENCH SUPPORT BRACKETS
SCALE: 3/4" = 1'-0"



SECTION A-A



BENCH SUPPORT BRACKETS
SCALE: 3/4" = 1'-0"

collinger-smith
Planning Consultants / Landscape Architects / Builders
10101 N. 19th Ave., Suite 100, Phoenix, AZ 85021
Tel: 602-998-1111

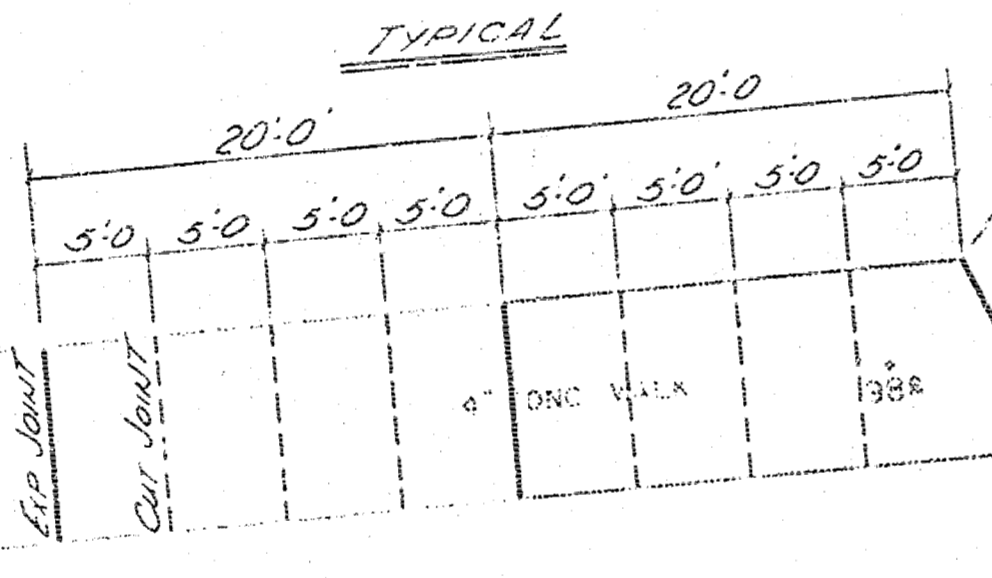
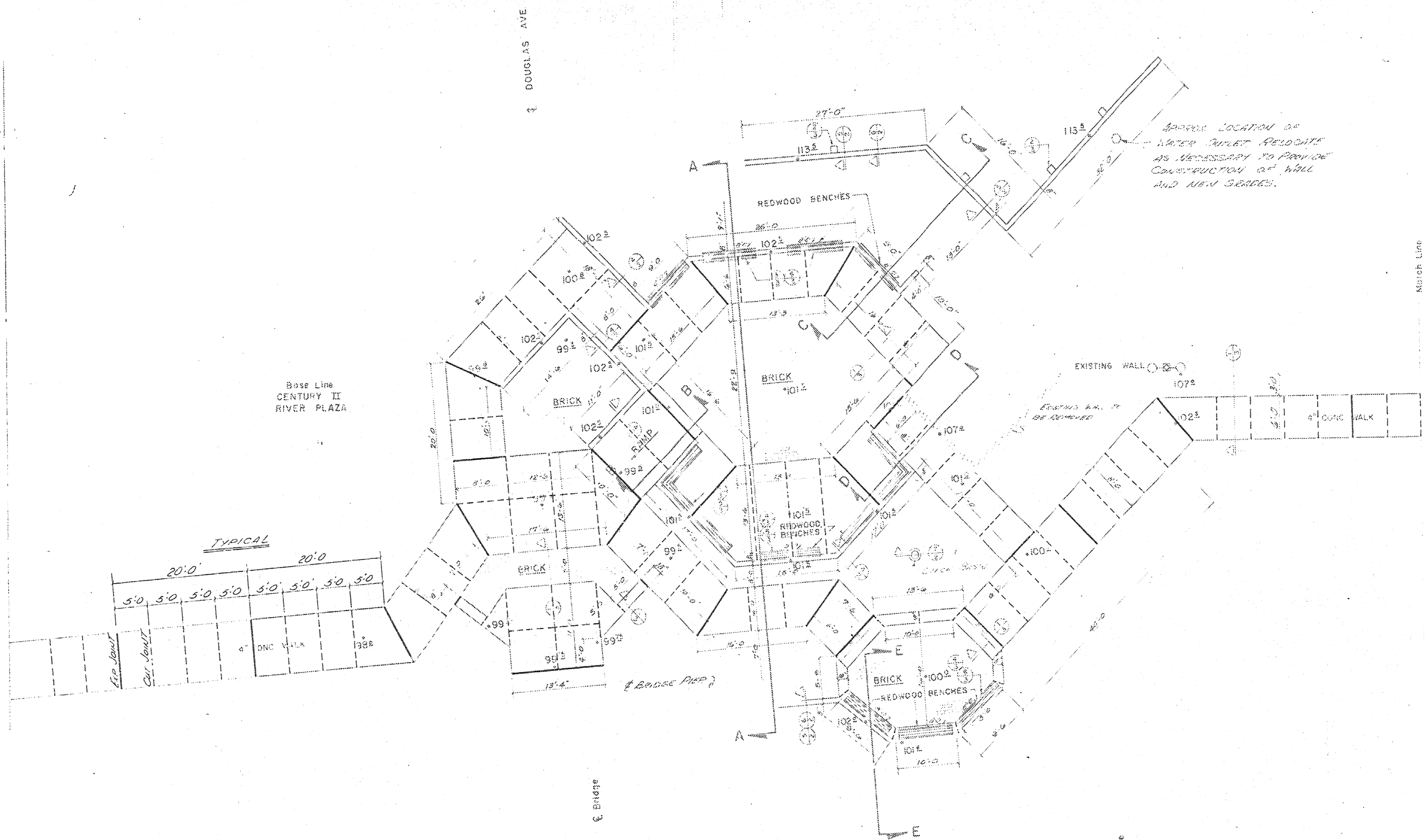
REVISIONS

SHEET TITLE
DETAILS
DATE
JAN 11, 71

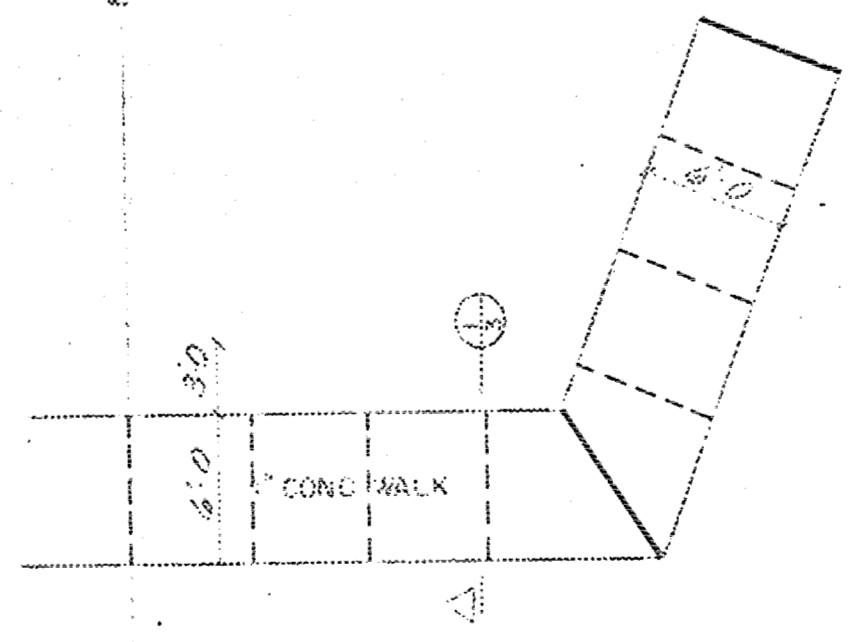
PROJECT
NORTH EXTENSION
CENTURY II RIVER PLAZA
URB. NO. R-19
SHEET NUMBER 3 OF 8 SHEETS

APPROVED
DATE
DATE

JOHN GATES



1. Expansion joint between walk and conc base under brick
2. Expansion joint between walk and retaining walls.



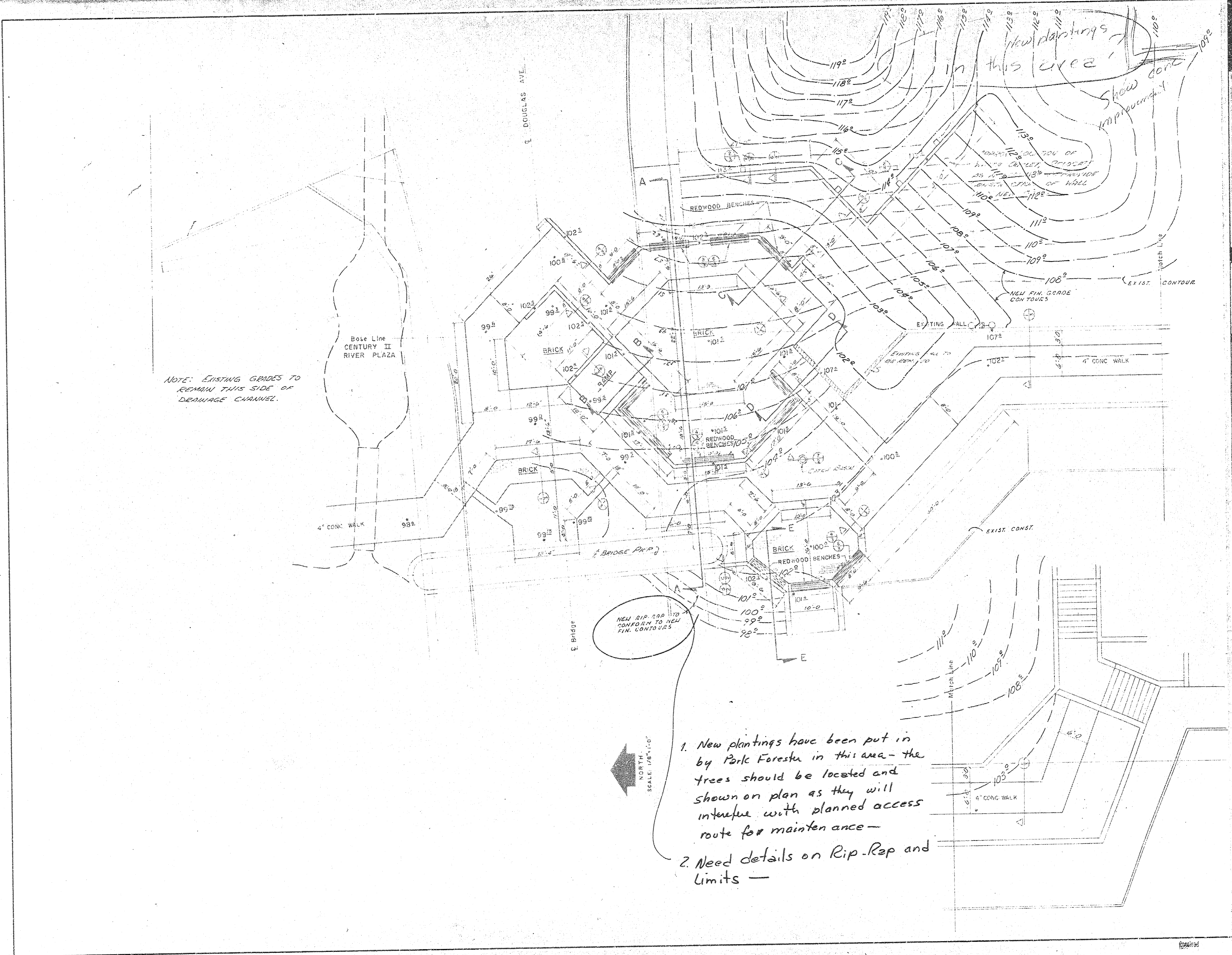
oblinger-smith
 Planning Consultants /
 Landscape Architects
 1100 North Main Street, Suite 100
 Wichita, Kansas 67202

REVISIONS
 SHEET TITLE
 SIDE WALK
 EXPANSION JOINT
 & CONC WALK
 CENTURY II RIVER PLAZA
 DATE
 JAN. 11, 71

PROJECT
 NORTH EXTENSION
 CENTURY II RIVER PLAZA
 CENTURY II RIVER PLAZA
 SHEET NUMBER 4 OF 6 SHEETS

REGISTERED PROFESSIONAL ARCHITECT
 JOHN E. GILES
 ARCHITECT
 JOHN H. GILES
 ARCHITECT

JOHN GATES
 ARCHITECT
 1100 North Main Street, Suite 100
 Wichita, Kansas 67202



NOTE: EXISTING GRADES TO REMAIN THIS SIDE OF DRAINAGE CHANNEL.

NEW RIP RAP TO CONFORM TO NEW FIN. CONTOURS

1. New plantings have been put in by Park Forest in this area - the trees should be located and shown on plan as they will interfere with planned access route for maintenance -
2. Need details on Rip-Rap and Limits -

oblinger-smith
 Planning Consultant
 825 First National Bank Building
 Wichita, Kansas

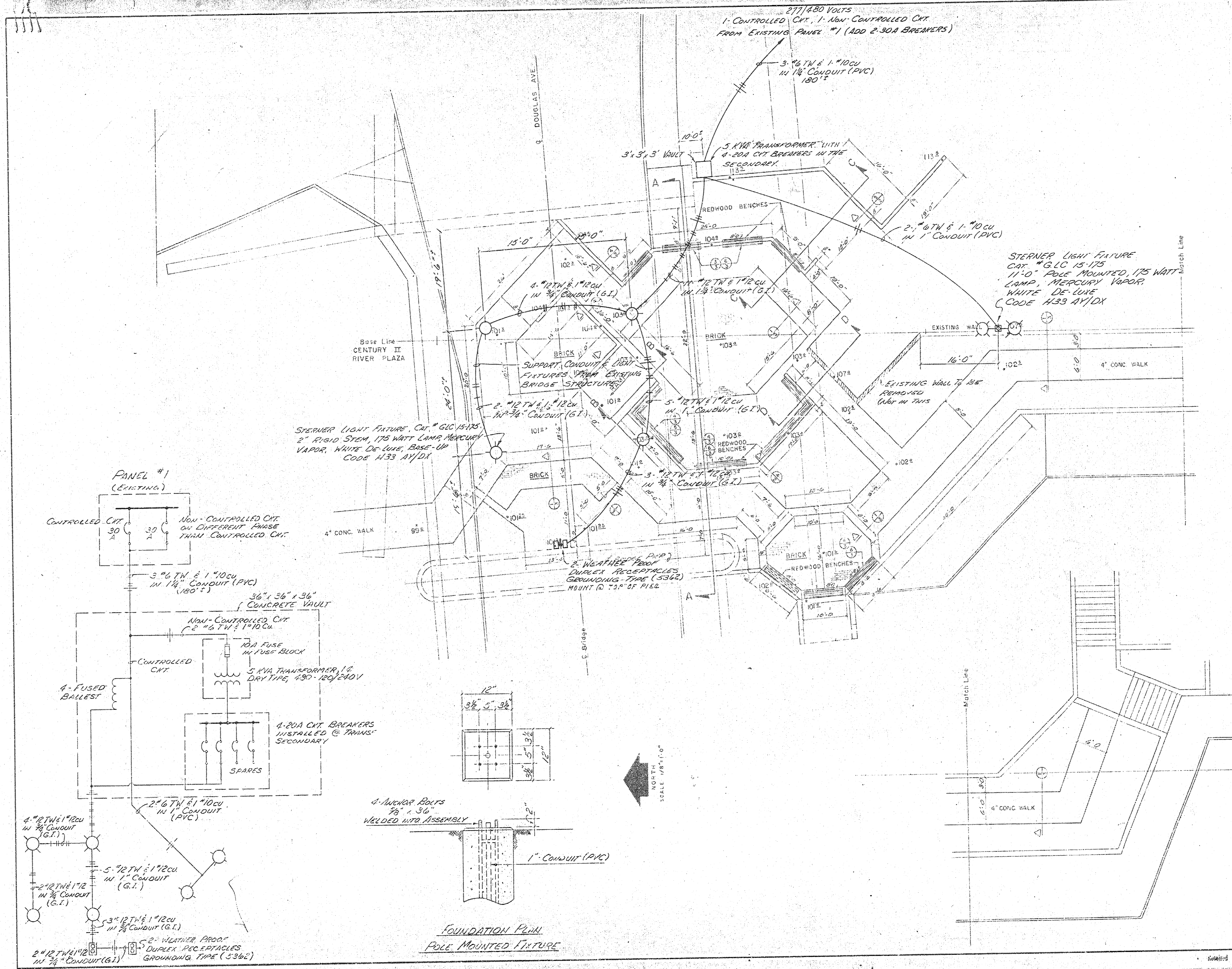
REVISIONS
 100111 1/18/71

SHEET TITLE
 GRADING
 PLAN
 DATE
 JAN 11, 71

PROJECT
 NORTH EXTENSION
 CENTURY II RIVER PLAZA
 DRAWING NO. R-19
 SHEET
 NUMBER 5 OF 6 SHEETS

UNIVERSITY OF KANSAS ARCHITECTURE DEPARTMENT
 JOHN K. GATES
 ARCHITECT
 1525 WEST 12TH AVENUE
 LAWRENCE, KANSAS 66044

JOHN GATES
 ARCHITECT
 1525 WEST 12TH AVENUE
 LAWRENCE, KANSAS 66044



oblinger-smith
 Planning Consultants
 Landscape Architects
 Architects
 1000 RIVER PLAZA
 WASHINGTON, D.C. 20004

REVISIONS
 SHEET TITLE
**ELECTRICAL PLAN
 AND
 DETAILS**
 DATE
 JAN. 11, 71

PROJECT
**NORTH EXTENSION
 CENTURY II RIVER PLAZA**
 DRAWING NO. **R-19**
 SHEET NO. **15** OF **18** SHEETS

APPROVED BY ARCHITECT
 JOHN R. GATES
 DATE OF REVIEW
 APRIL 1971

JOHN R. GATES
 ARCHITECT
 1000 RIVER PLAZA
 WASHINGTON, D.C. 20004