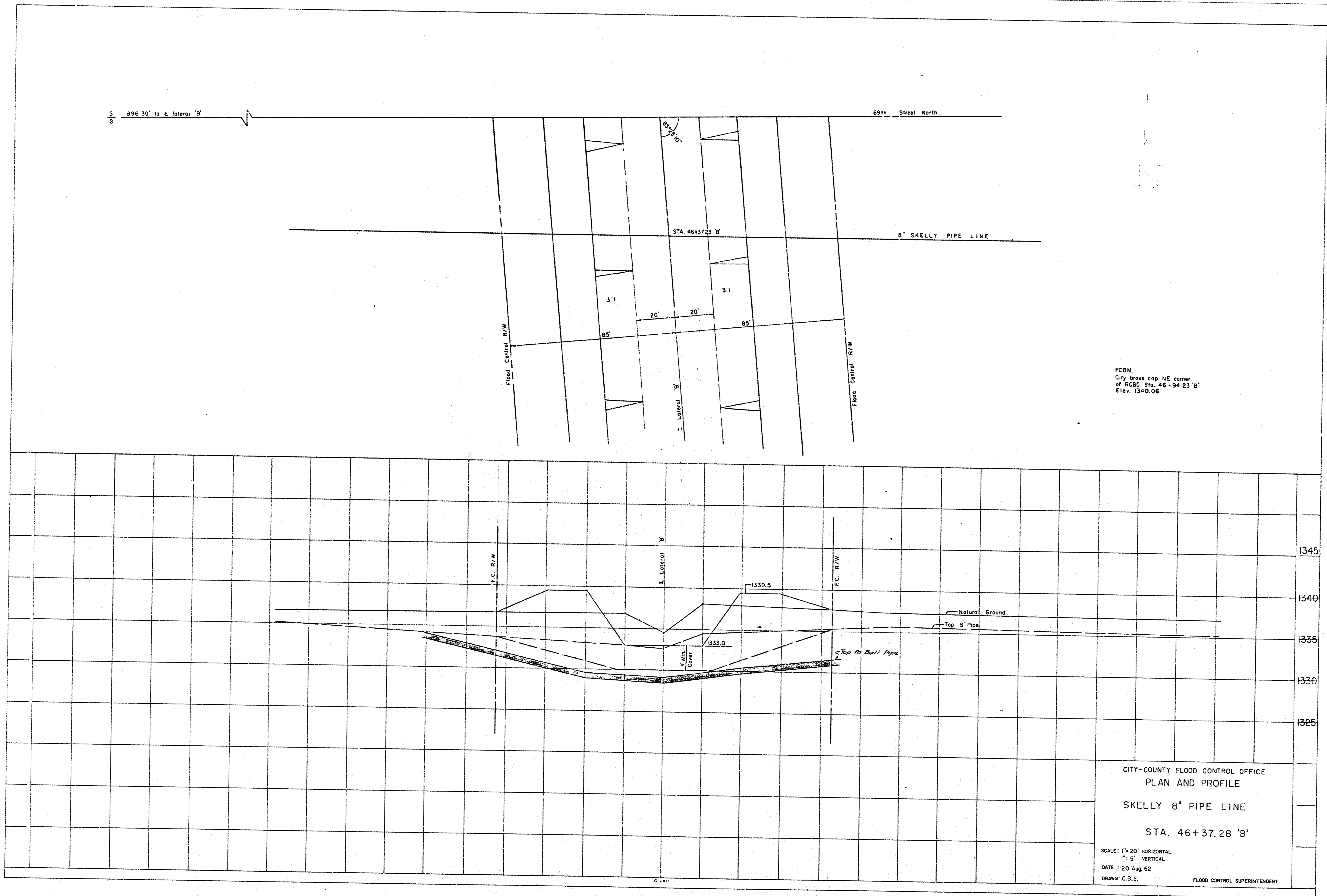


N.W. 1/4 Sec. 17 T20N R10W S. 1/4
 1/2 mi. S. of
 1/2 mi. S. of

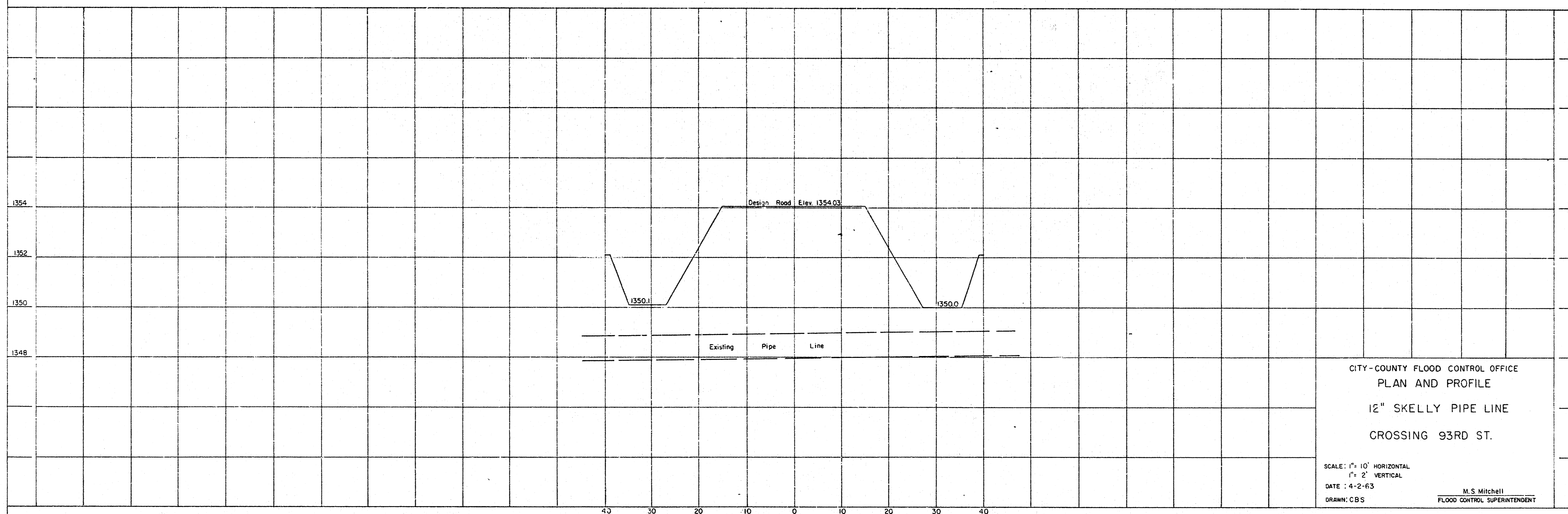
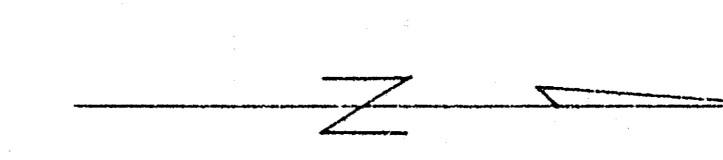
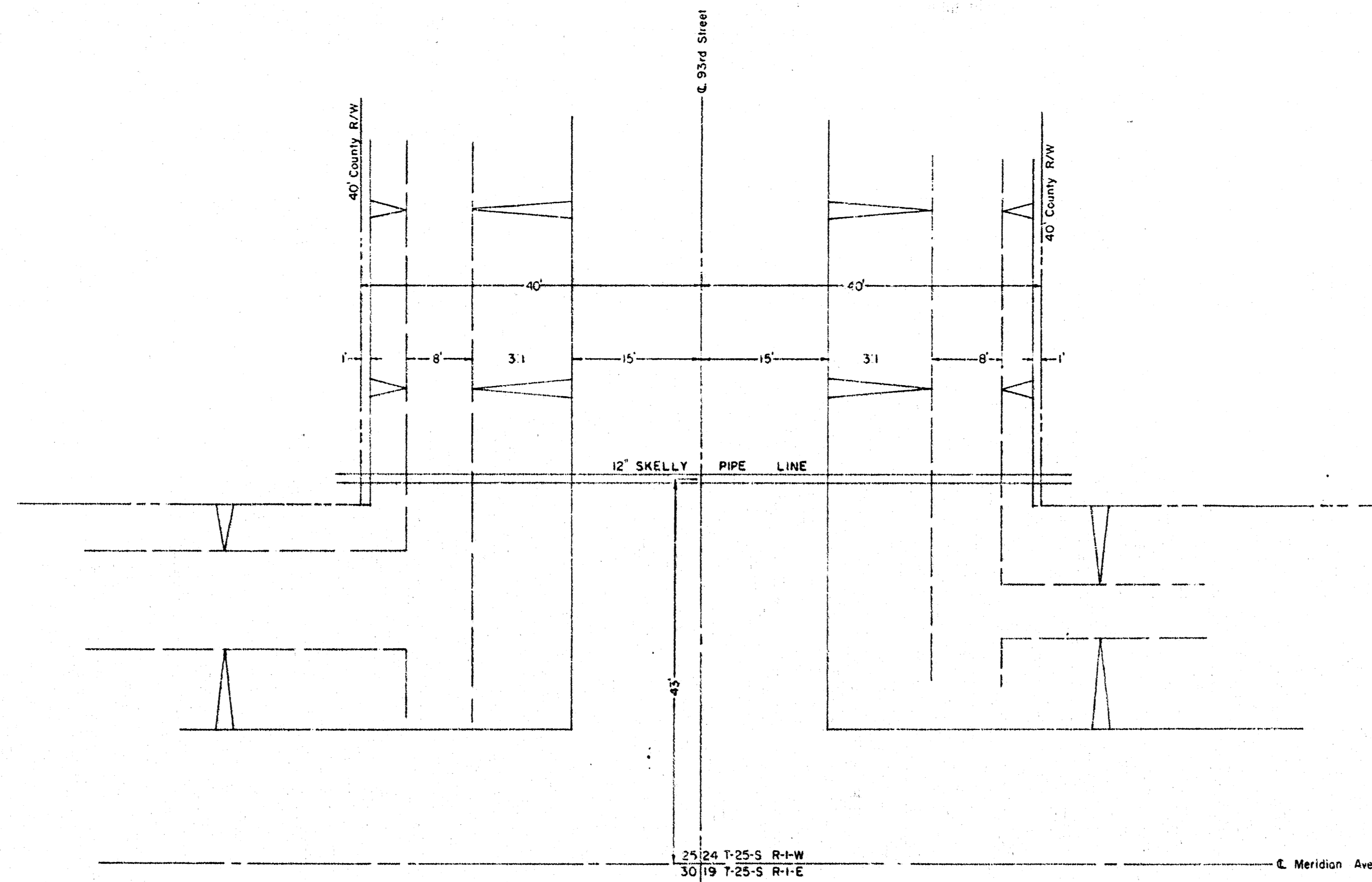


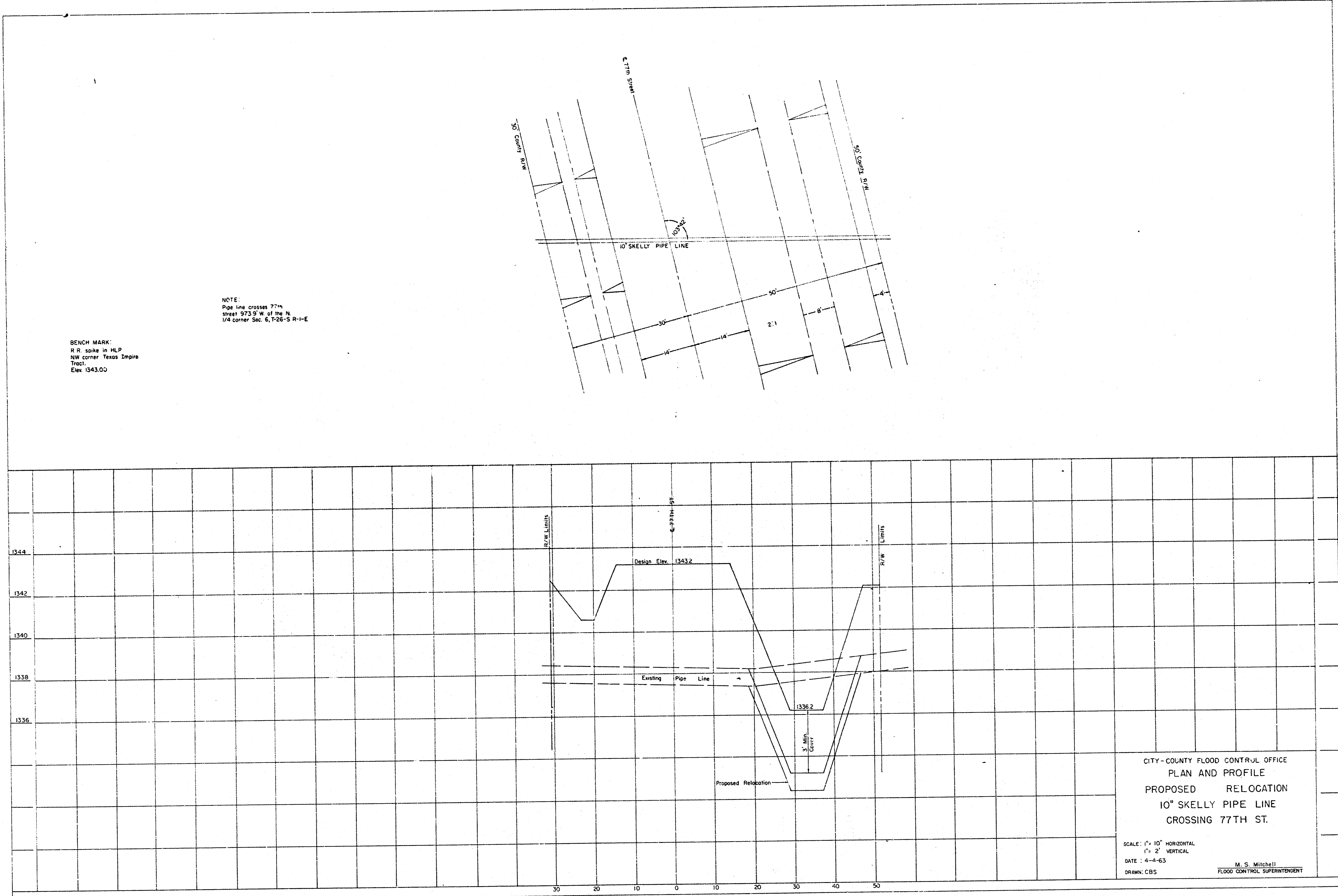
FCBM.
 City Brass cap NE corner
 of RCBC Sta. 46+94.23 'B'
 Elev. 1340.06

CITY-COUNTY FLOOD CONTROL OFFICE
 PLAN AND PROFILE
 SKELLY 8" PIPE LINE
 STA. 46+37.28 'B'
 SCALE: 1" = 20' HORIZONTAL
 1" = 5' VERTICAL
 DATE: 20 Aug. 62
 DRAWN: C.B.S. FLOOD CONTROL SUPERINTENDENT

RELOCATION NOT
REQUIRED

BENCH MARK:
R.R. spike in guardrail post
NE corner of bridge, 30 S
8 30° E of Section corner
24.19
25 30° T-25-S, R+W 8 R-I-E
Elev. 1356.37





BENCH MARK:
 R.R. spike in MLP
 NW corner Texas Empire
 Tract.
 Elev. 1343.00

NOTE:
 Pipe line crosses 77th
 street 37.5' W of the N
 1/4 corner Sec. 6, T.9S S. R.1-E

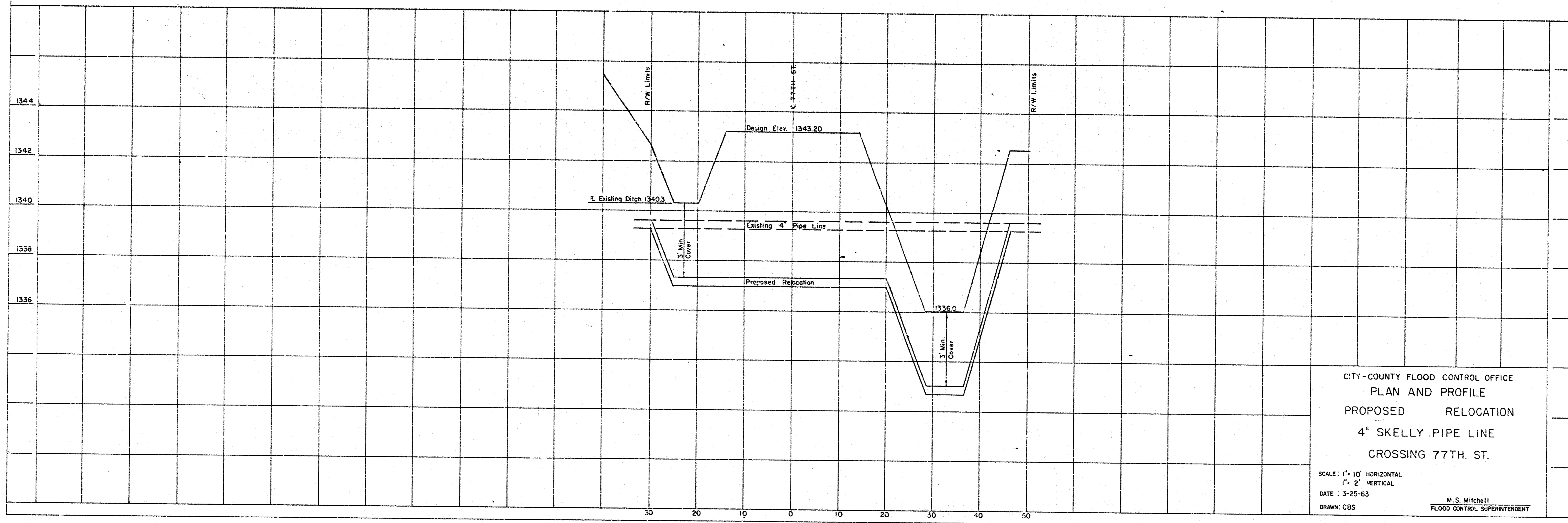
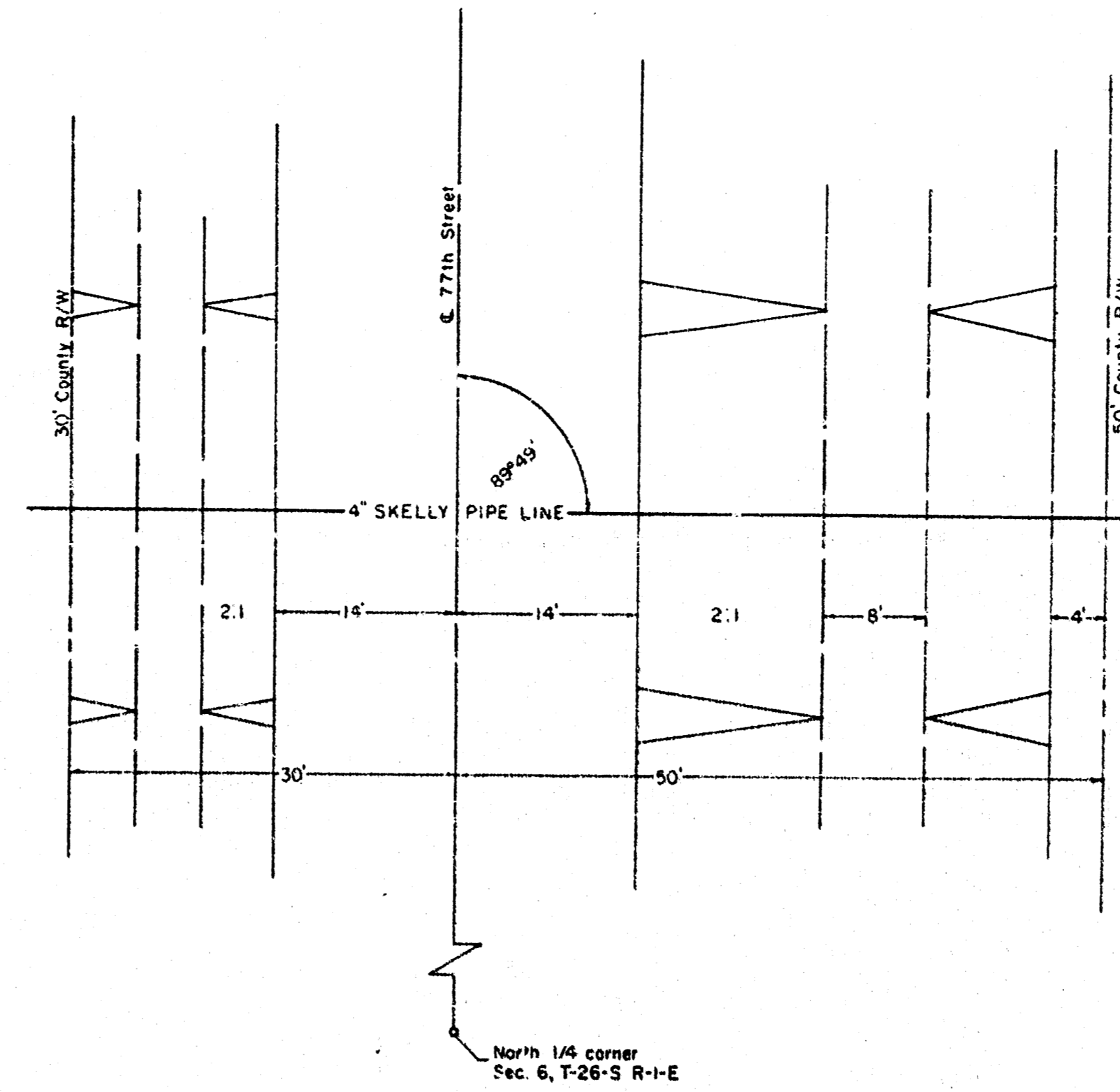
CITY-COUNTY FLOOD CONTROL OFFICE
 PLAN AND PROFILE
 PROPOSED RELOCATION
 10" SKELLY PIPE LINE
 CROSSING 77TH ST.

SCALE: 1" = 10' HORIZONTAL
 1" = 2' VERTICAL
 DATE: 4-4-63
 DRAWN: CBS

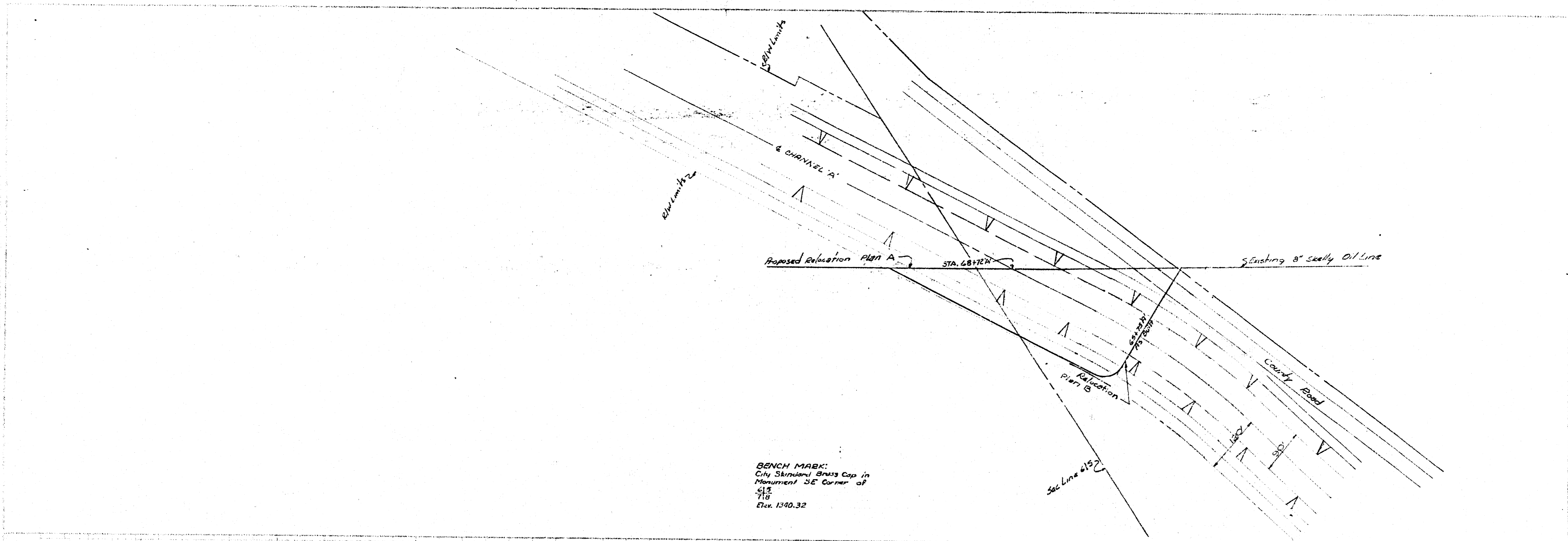
M. S. Mitchell
 FLOOD CONTROL SUPERINTENDENT

NOTE
 Pipe line crosses 77th
 street 975.72' west of
 the north 1/4 corner
 Section 6, T-26-S R-1-E

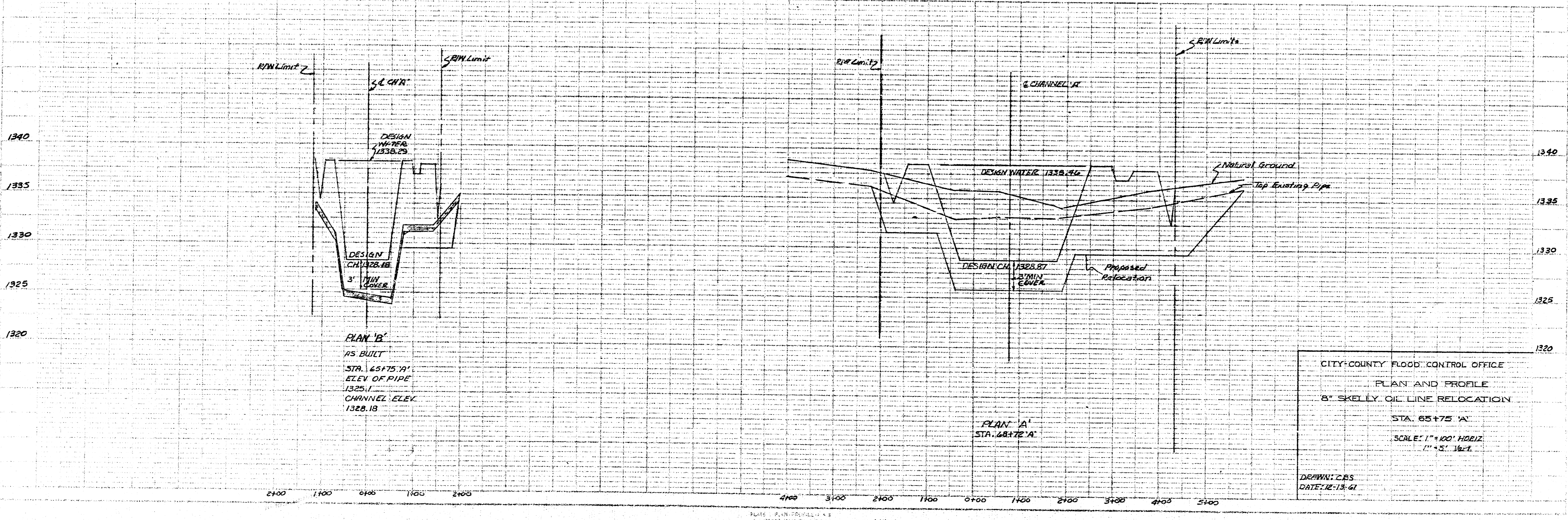
BENCH MARK:
 R.R. Spike in R.L.P.
 NW corner Texas Empire
 tract.
 Elev. 1342.00



CITY-COUNTY FLOOD CONTROL OFFICE
 PLAN AND PROFILE
 PROPOSED RELOCATION
 4" SKELLY PIPE LINE
 CROSSING 77TH ST.
 SCALE: 1" = 10' HORIZONTAL
 1" = 2' VERTICAL
 DATE: 3-25-63
 DRAWN: CBS
 M. S. Mitchell
 FLOOD CONTROL SUPERINTENDENT



BENCH MARK:
 City Skelly Gas Co. in
 Monument SE corner of
 45
 49
 Elev. 1340.32



PLAN 'B'
 AS BUILT
 STA. 145+75 'A'
 ELEV. OF PIPE
 1325.1
 CHANNEL ELEV.
 1328.18

PLAN 'A'
 STA. 48+72 'A'

CITY-COUNTY FLOOD CONTROL OFFICE
 PLAN AND PROFILE
 8" SKELLY OIL LINE RELOCATION
 STA. 65+75 'A'
 SCALE: 1" = 40' HORIZ.
 1" = 5' VERT.

DESIGN: CRS
 DATE: 12-13-61