

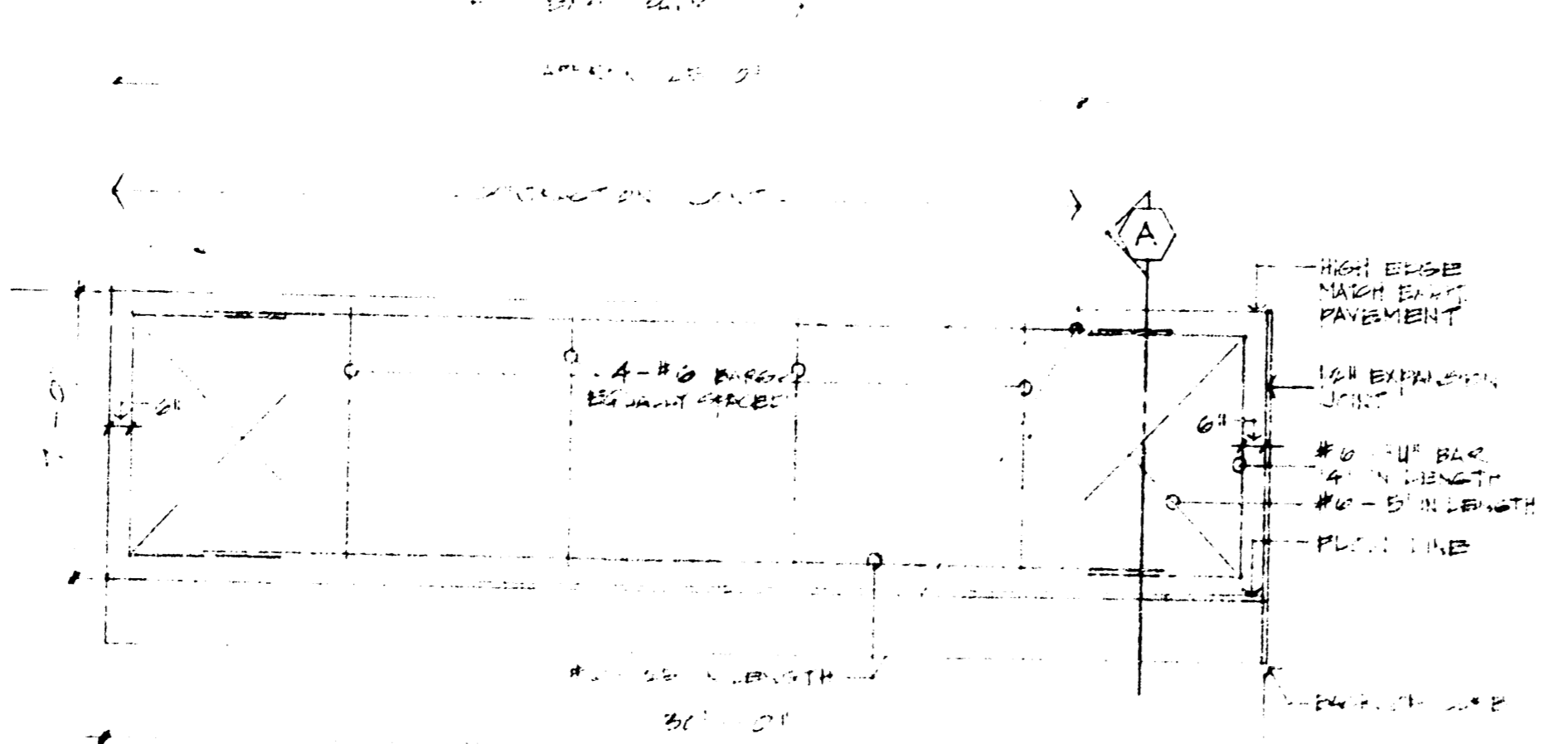
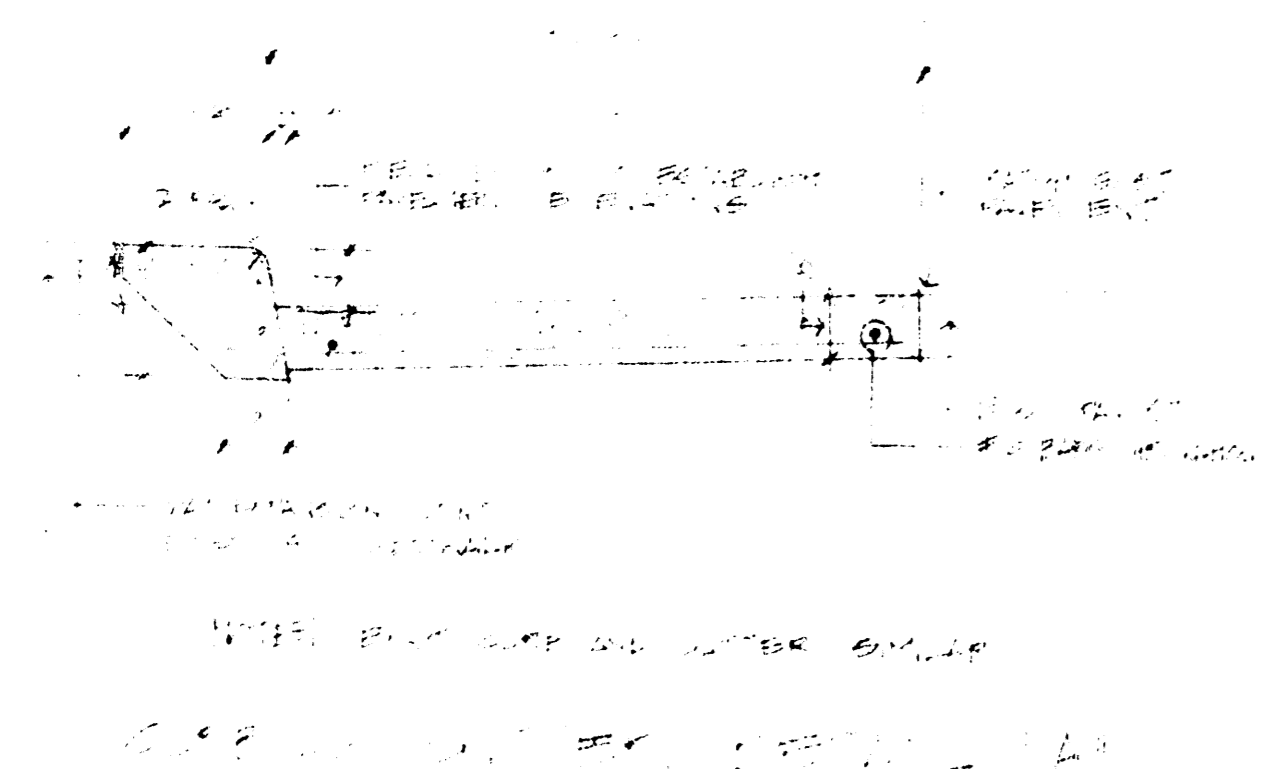
GENERAL NOTES
 1. ALL WORK SHALL BE IN ACCORDANCE WITH THE CITY OF CHICAGO SPECIFICATIONS FOR PUBLIC WORKS, LATEST EDITION.
 2. THE CONTRACTOR SHALL BE RESPONSIBLE FOR OBTAINING ALL NECESSARY PERMITS FROM THE CITY OF CHICAGO.
 3. THE CONTRACTOR SHALL MAINTAIN ACCESS TO ALL ADJACENT PROPERTIES AT ALL TIMES.
 4. THE CONTRACTOR SHALL BE RESPONSIBLE FOR PROTECTING ALL EXISTING UTILITIES.
 5. THE CONTRACTOR SHALL MAINTAIN TRAFFIC FLOW THROUGHOUT THE PROJECT.
 6. THE CONTRACTOR SHALL MAINTAIN THE STREET SURFACE IN GOOD CONDITION AT ALL TIMES.
 7. THE CONTRACTOR SHALL BE RESPONSIBLE FOR THE REMOVAL OF ALL EXCESS MATERIALS AND DEBRIS.
 8. THE CONTRACTOR SHALL MAINTAIN THE STREETS IN GOOD CONDITION AT ALL TIMES.
 9. THE CONTRACTOR SHALL BE RESPONSIBLE FOR THE PROTECTION OF ALL ADJACENT PROPERTIES.
 10. THE CONTRACTOR SHALL MAINTAIN ACCESS TO ALL ADJACENT PROPERTIES AT ALL TIMES.
 11. THE CONTRACTOR SHALL BE RESPONSIBLE FOR PROTECTING ALL EXISTING UTILITIES.
 12. THE CONTRACTOR SHALL MAINTAIN TRAFFIC FLOW THROUGHOUT THE PROJECT.
 13. THE CONTRACTOR SHALL MAINTAIN THE STREET SURFACE IN GOOD CONDITION AT ALL TIMES.
 14. THE CONTRACTOR SHALL BE RESPONSIBLE FOR THE REMOVAL OF ALL EXCESS MATERIALS AND DEBRIS.
 15. THE CONTRACTOR SHALL MAINTAIN THE STREETS IN GOOD CONDITION AT ALL TIMES.
 16. THE CONTRACTOR SHALL BE RESPONSIBLE FOR THE PROTECTION OF ALL ADJACENT PROPERTIES.
 17. THE CONTRACTOR SHALL MAINTAIN ACCESS TO ALL ADJACENT PROPERTIES AT ALL TIMES.

STORM AND SEWER TO BE REMOVED AND REPAIRED
 FIELD ENGINEER TO ESTABLISH EXISTING ELEVATIONS

FIELD ENGINEER TO ESTABLISH EXISTING ELEVATIONS
 FIELD ENGINEER TO ESTABLISH EXISTING ELEVATIONS

SCALE: 1" = 10'-0"

17



GENERAL NOTES

1. VERIFY EXISTING UTILITIES AND DEPT. RECORDS TO BE MAINTAINED TO THE CITY OF CHICAGO RECORDS.
2. ALL EXISTING UTILITIES SHALL BE PROTECTED AND REPAIRED.
3. CONTRACTOR SHALL MAINTAIN TRAFFIC FLOW THROUGHOUT THE PROJECT.
4. CONTRACTOR SHALL MAINTAIN THE STREET SURFACE IN GOOD CONDITION AT ALL TIMES.
5. CONTRACTOR SHALL BE RESPONSIBLE FOR THE PROTECTION OF ALL ADJACENT PROPERTIES.
6. CONTRACTOR SHALL MAINTAIN ACCESS TO ALL ADJACENT PROPERTIES AT ALL TIMES.
7. CONTRACTOR SHALL BE RESPONSIBLE FOR PROTECTING ALL EXISTING UTILITIES.
8. CONTRACTOR SHALL MAINTAIN TRAFFIC FLOW THROUGHOUT THE PROJECT.
9. CONTRACTOR SHALL MAINTAIN THE STREET SURFACE IN GOOD CONDITION AT ALL TIMES.
10. CONTRACTOR SHALL BE RESPONSIBLE FOR THE REMOVAL OF ALL EXCESS MATERIALS AND DEBRIS.
11. CONTRACTOR SHALL MAINTAIN THE STREETS IN GOOD CONDITION AT ALL TIMES.
12. CONTRACTOR SHALL BE RESPONSIBLE FOR THE PROTECTION OF ALL ADJACENT PROPERTIES.
13. CONTRACTOR SHALL MAINTAIN ACCESS TO ALL ADJACENT PROPERTIES AT ALL TIMES.
14. CONTRACTOR SHALL BE RESPONSIBLE FOR PROTECTING ALL EXISTING UTILITIES.
15. CONTRACTOR SHALL MAINTAIN TRAFFIC FLOW THROUGHOUT THE PROJECT.
16. CONTRACTOR SHALL MAINTAIN THE STREET SURFACE IN GOOD CONDITION AT ALL TIMES.
17. CONTRACTOR SHALL BE RESPONSIBLE FOR THE REMOVAL OF ALL EXCESS MATERIALS AND DEBRIS.

GENERAL CONDITIONS

1" = 10'-0"	1" = 10'-0"
1" = 10'-0"	1" = 10'-0"
1" = 10'-0"	1" = 10'-0"
1" = 10'-0"	1" = 10'-0"
1" = 10'-0"	1" = 10'-0"
1" = 10'-0"	1" = 10'-0"
1" = 10'-0"	1" = 10'-0"
1" = 10'-0"	1" = 10'-0"
1" = 10'-0"	1" = 10'-0"
1" = 10'-0"	1" = 10'-0"

WATER STREET
 STORM WATER DESIGN
 FARM CREDIT BANK

SCHAEFER SCHIRMER ARCHITECTS ENGINEERS
 200 SOUTH MILLER AVENUE
 CHICAGO, ILLINOIS 60606

REVISION:
 DATE:
 DRAWN BY:
 JOB NUMBER: