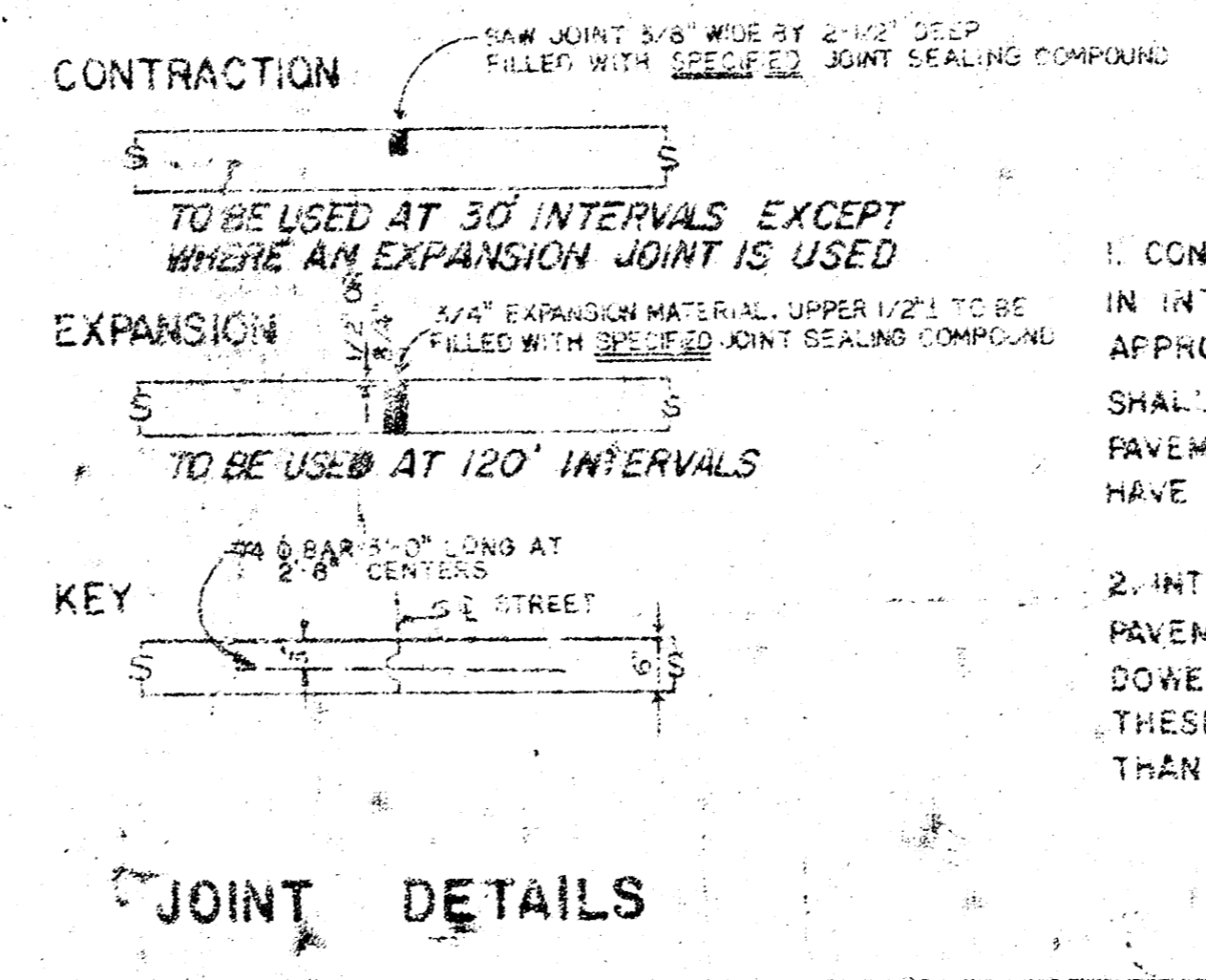
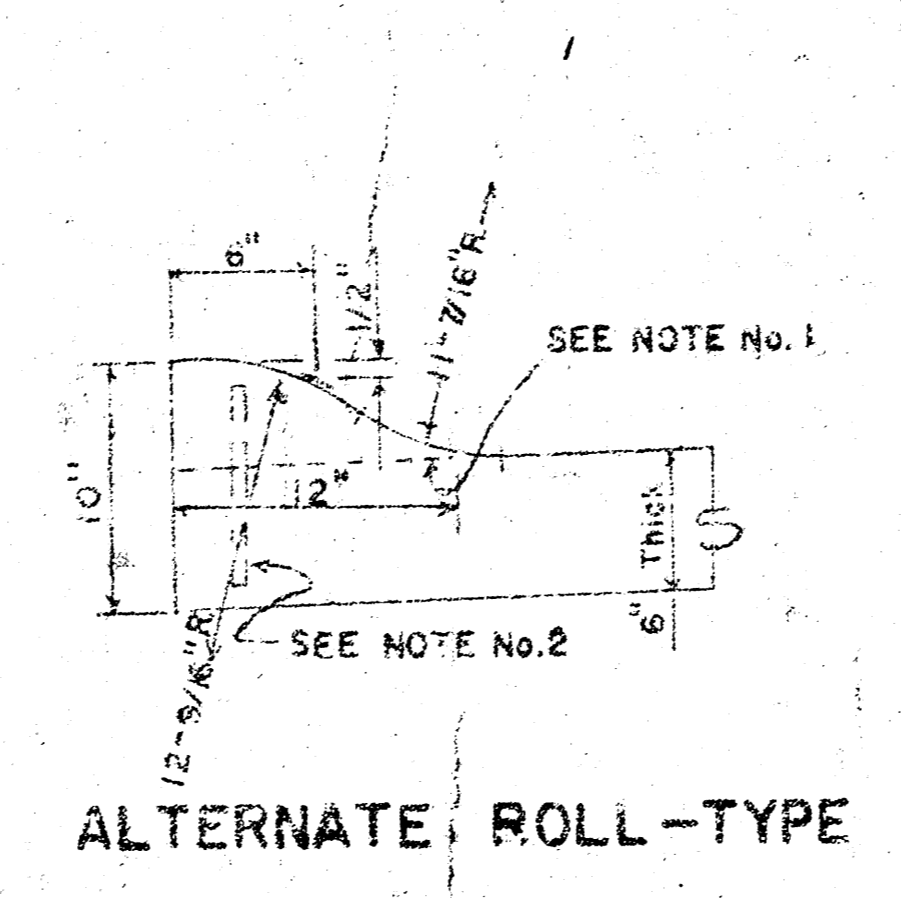
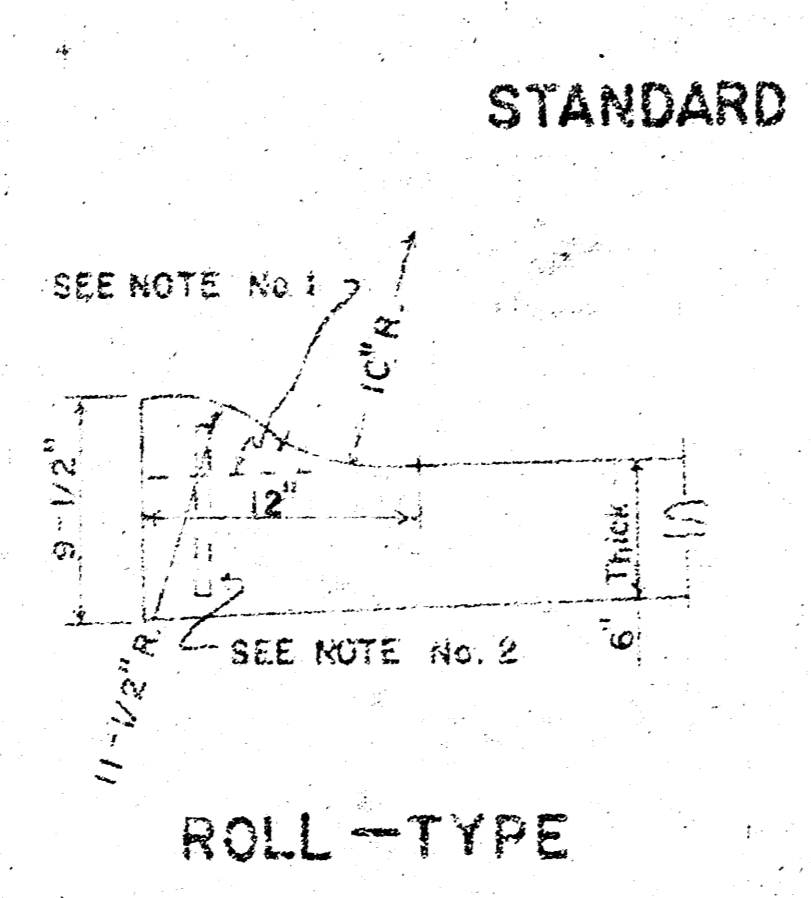
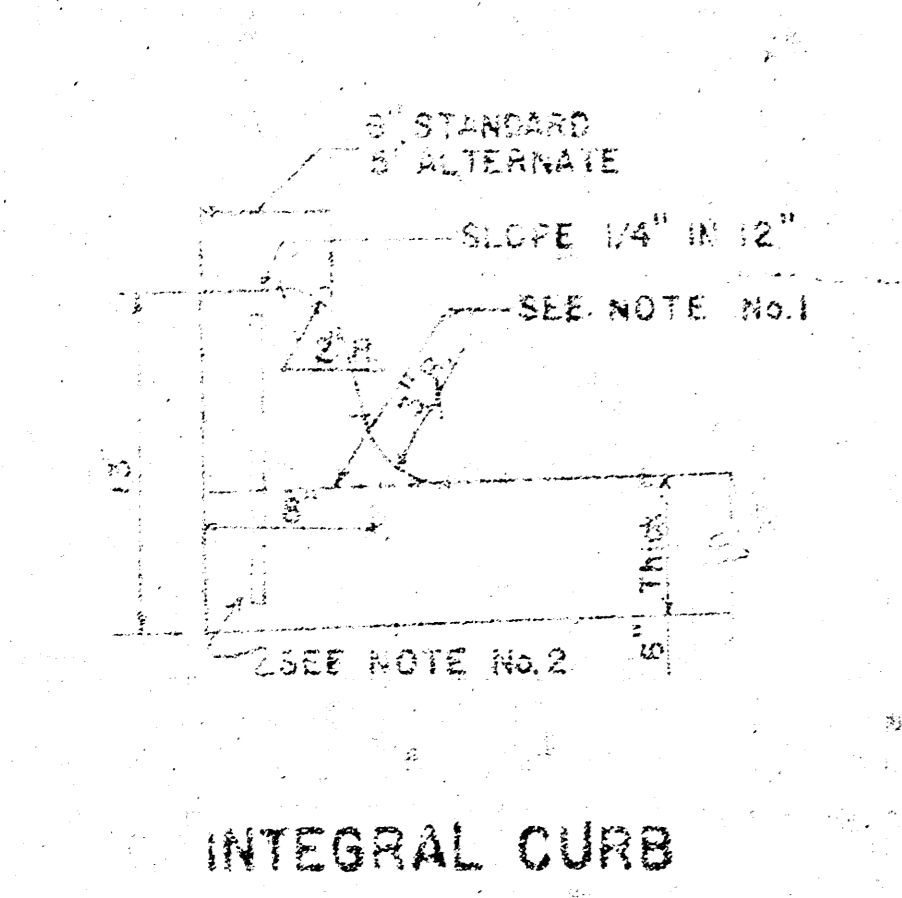
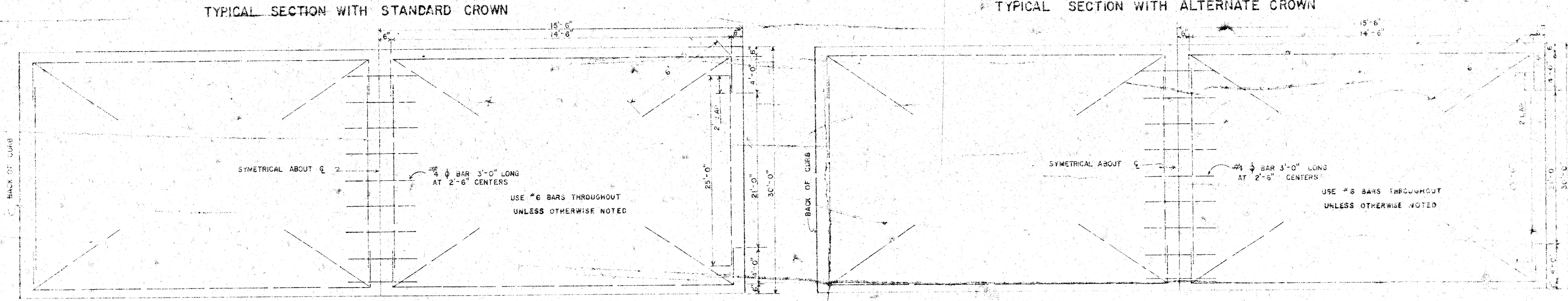
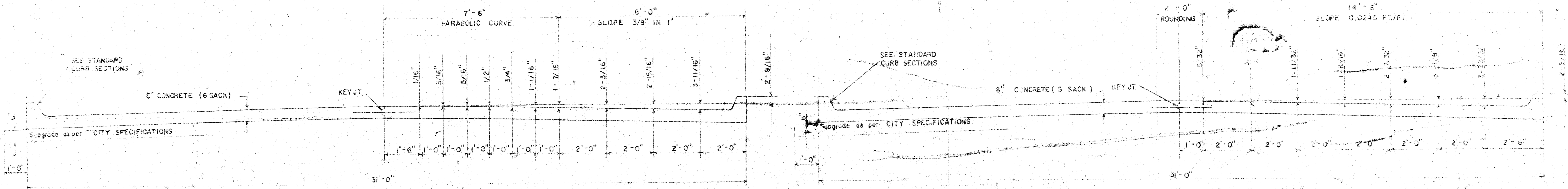


**SECOND STREET**  
W.L. DORIS ST. to the W.L. ANNA ST.

TYPICAL SECTIONS OF 30' CONCRETE PAVEMENT  
Proj. No. DAKS576041



**GENERAL NOTES**

- CONTRACTION JOINTS MAY BE CONSTRUCTED IN INTEGRAL CURB BY SAWING WITH AN APPROVED CONCRETE SAW. THE SAW CUT SHALL EXTEND THROUGH THE CURB TO THE PAVEMENT. SAWED CONTRACTION JOINTS SHALL HAVE A MAXIMUM SPACING OF 10'.
- INTEGRAL CURB SHALL BE TIED TO THE PAVEMENT BASE WITH SHORT DEFORMED DOWEL BARS SPACED AT 2'-6" INTERVALS. THESE DOWEL BARS SHALL NOT BE LESS THAN 1/2" OR MORE THAN 3/4" IN DIAMETER.



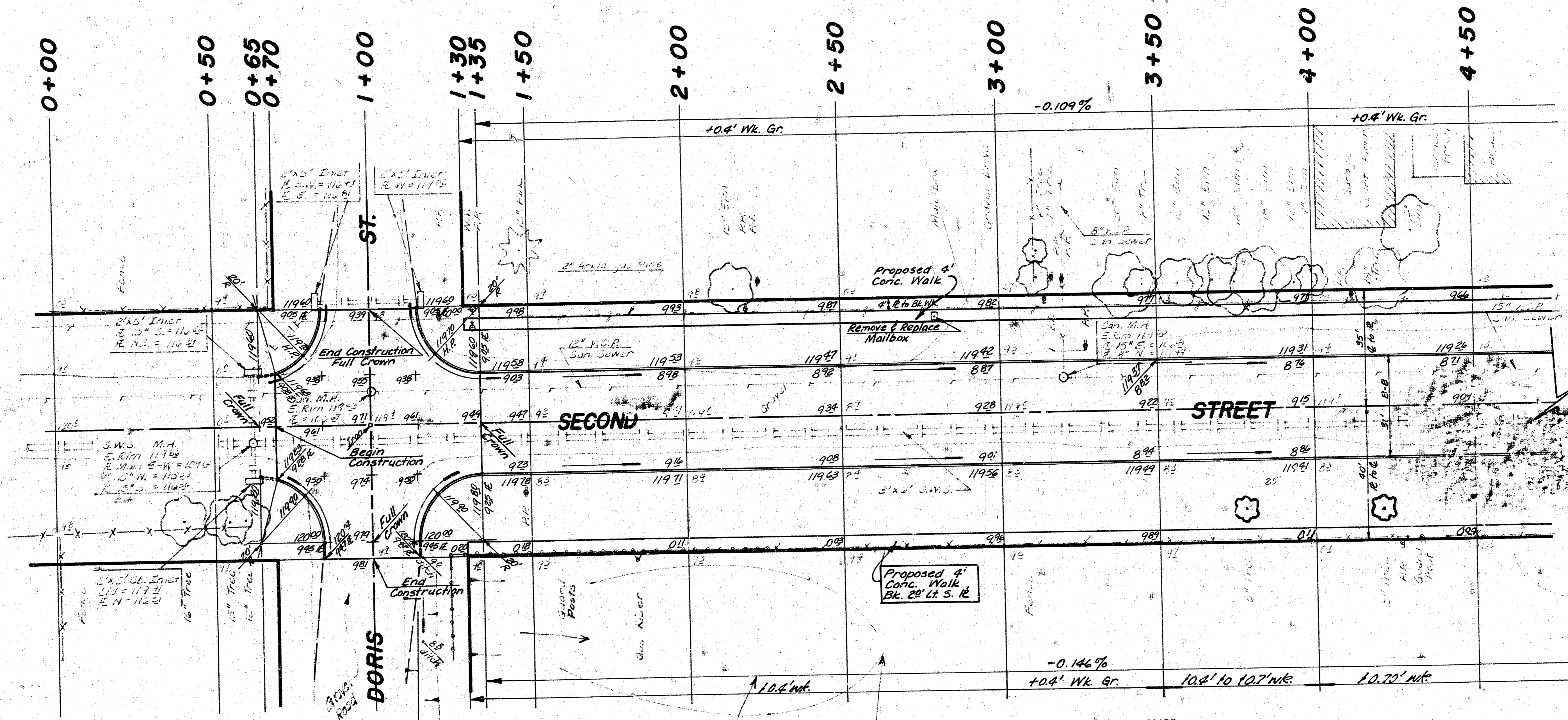
**CITY OF WICHITA, KANSAS**  
Department of Public Works  
R.W. Linn  
Date: \_\_\_\_\_  
Engineering Division  
City Engineer  
Project No. DAKS576041

B-M

FILMED FROM THE BEST AVAILABLE COPY.....

B.M. = 119.03 "G" in Globe, E. Cb. Doris, 2' S. of S.L. 1<sup>st</sup> St.  
 B.M. = 121.44 N.E. Cor. Conc. Porch, House No. 241 N. Doris  
 Baseline is Centerline Second St.

NORTH  
 SCALE: 1" = 20'



Bur: Krug  
 Plus Henry  
 Eric Henry  
 Checked

**NOTE TO FIELD ENGINEER & CONTRACTOR**

- DRAIN TILE HAS BEEN SET ON THIS PAVING CONTRACT TO INSURE DRAINAGE FOR LOW AREAS BEHIND PROPERTY LINES. THE ENGINEER SHALL DETERMINE IN FIELD THE LOCATIONS REQUIRING THE USE OF DRAINAGE PIPES.
- CONCRETE RETAINING WALL INSTALLATION SHALL BE CONSIDERED AN ALTERNATE BETWEEN S.D.S. 11450 & 13460 N.S. 2ND STREET. BOTH THE FIELD ENGINEER AND THE CONTRACTOR SHALL CONTACT PROPERTY OWNER INFORMING HIM OF THE "GRADING OF PARKING" & "DRIVE AWAY CONDITIONS" @ THIS LOCATION. ANY RETAINING WALL CONSTRUCTED SHALL BE ON CITY R/W.
- FENCE AND GUARD POSTS ON S.S. 2ND STREET ACROSS PARK PROPERTY TO REMAIN IN PLACE.
- TAKE TIES AND REPLACE ALL "IRONS" ON THIS PROJECT.

Re-Grade Drainage Ditch (East Side)  
 Cost is Incidental to Project.

**EARTHWORK:**

	CITY	PROPERTY
EXCAVATION	227.2 C.Y.	1010.3 C.Y.
+10%	22.7 C.Y.	101.0 C.Y.
TOTAL	249.9 C.Y.	1111.3 C.Y.
COMP. FILL		36.5 C.Y.
+10%		3.7 C.Y.
TOTAL		40.2 C.Y.

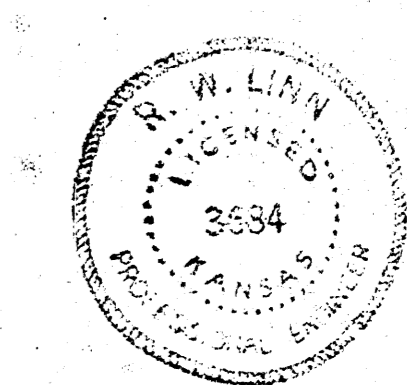
MANIPULATION = 5202.7 S.Y.

**KIWANIS PARK**

SUB-GRADE  
 TYPE OF SUB-GRADE TREATMENT SHALL BE DETERMINED BY THE FIELD ENGINEER. SUB-GRADE TREATMENT MAY CONSIST OF LIME TREATMENT, CEMENT TREATMENT, SUB-GRADE MODIFICATION, OR ANY COMBINATION OF THESE.

NOTE TO FIELD ENGINEER & CONTRACTOR  
 Grade parking and clear right-of-way for proposed sidewalk. Compact fill in sidewalk area TO BE CONSTRUCTED BY "OTHERS".

NOTE: Trees to be Removed are Marked thus. Except that any Tree Marked for Removal Which in the Opinion of the Engineer can be Saved, shall be Spared.

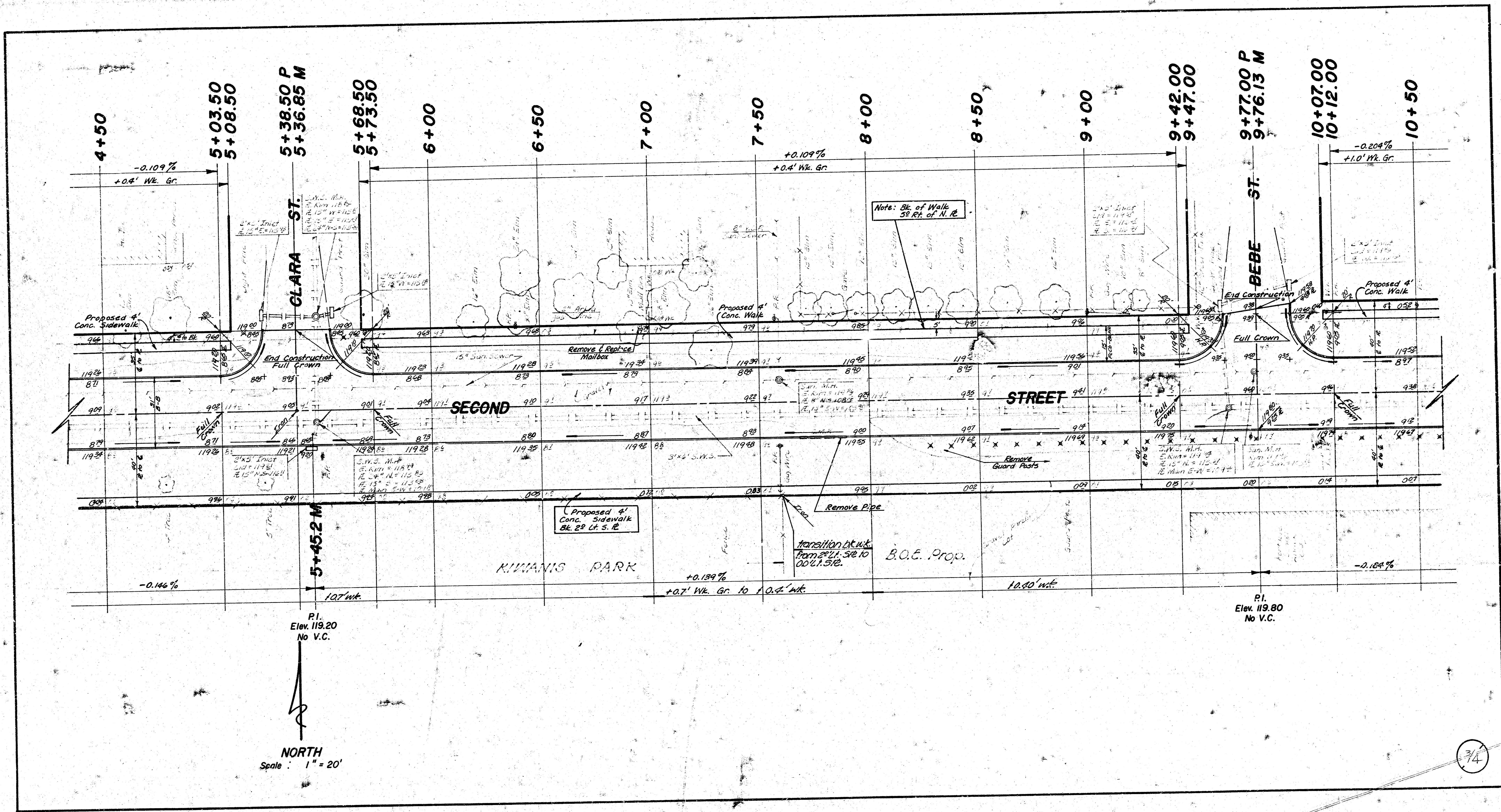


2/7

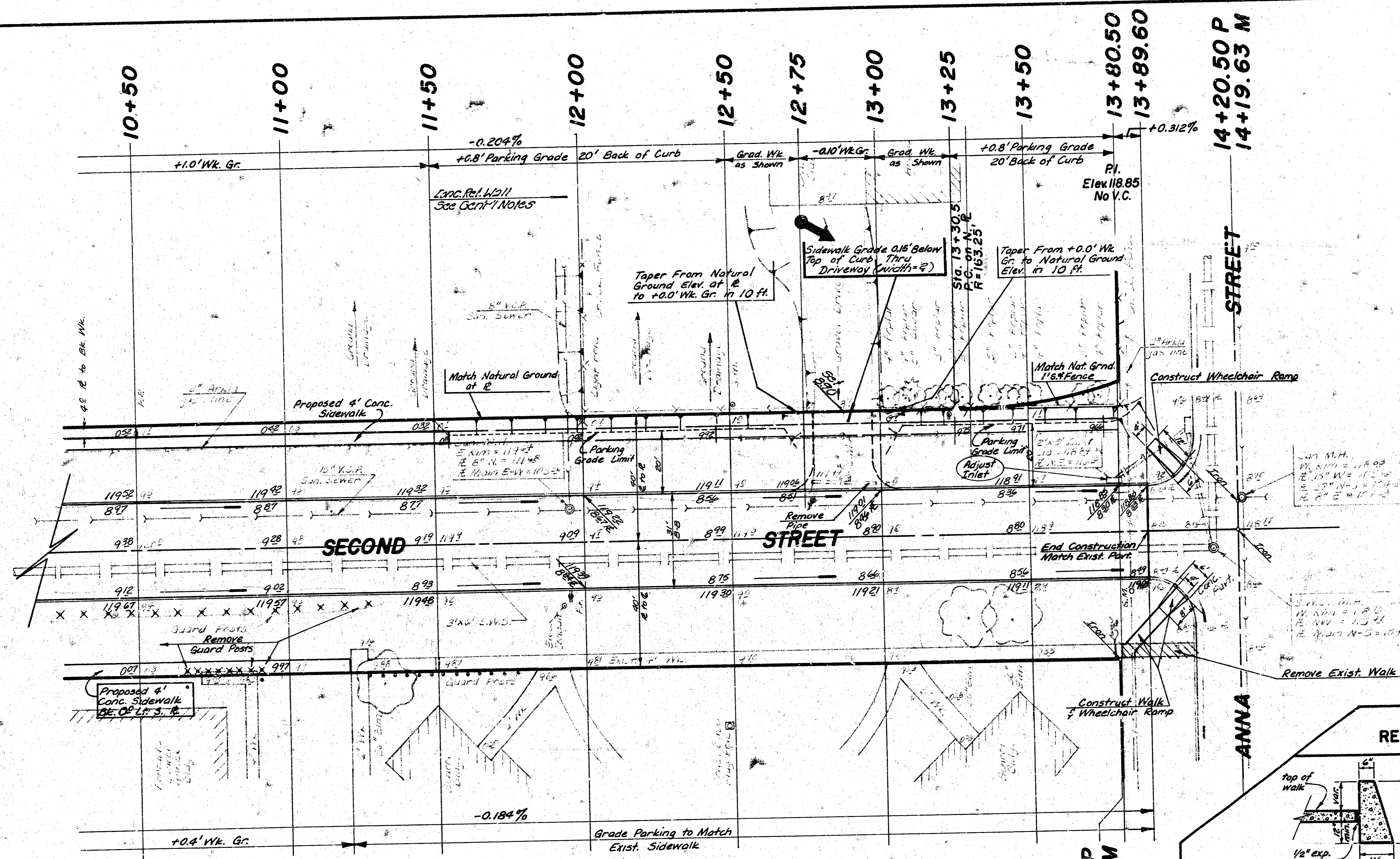
**SECOND STREET**  
 W.L. DORIS ST. to W.L. ANNA ST.  
 (31' B-B 6" Conc. Pavt. w/ Integral Curb)  
**CITY OF WICHITA, KANSAS**  
 R.W. Linn — City Engineer  
 Proj. No. DAK5576041 Date 7/4

B-M

FILMED FROM THE BEST AVAILABLE COPY.....



B-M



NOTE: Contractor to Contact the Board of Education Regarding the Salvage of Guard Posts Indicated for Removal on Plans.

**GRAVITY TYPE RETAINING WALL DETAIL**

CLASS	H
I	1 1/2' to 2'-0"
II	2'-0" to 2'-6"
III	2'-6" to 3'-0"

H	W	C.Y. of Conc. per Ft.
1'-6"	10"	0.0370
1'-9"	11"	0.0459
2'-0"	13"	0.0586
2'-3"	15"	0.0729
2'-6"	17"	0.0887
2'-9"	18 1/2"	0.1040
3'-0"	20"	0.1204

NOTE: Bevel all exposed edges 3/4". Taper ends of retaining walls from full height to walk elevation at all locations where retaining walls are constructed adjacent to drives or walks; except where the drives or walks have curbs or retaining walls along the sides. Entire length of tapered section to be included in pay length of retaining wall. Concrete to conform to City of Wichita specifications for Concrete Pavement.

4/4