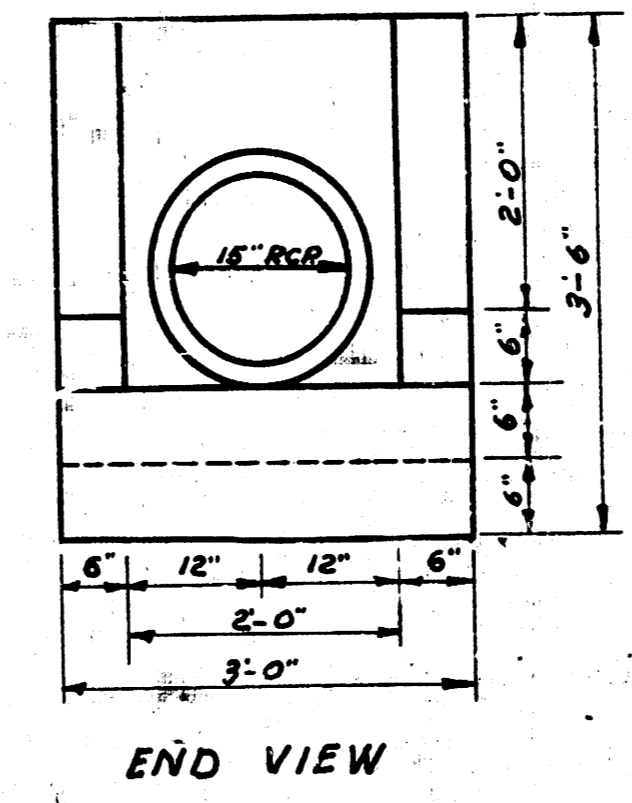
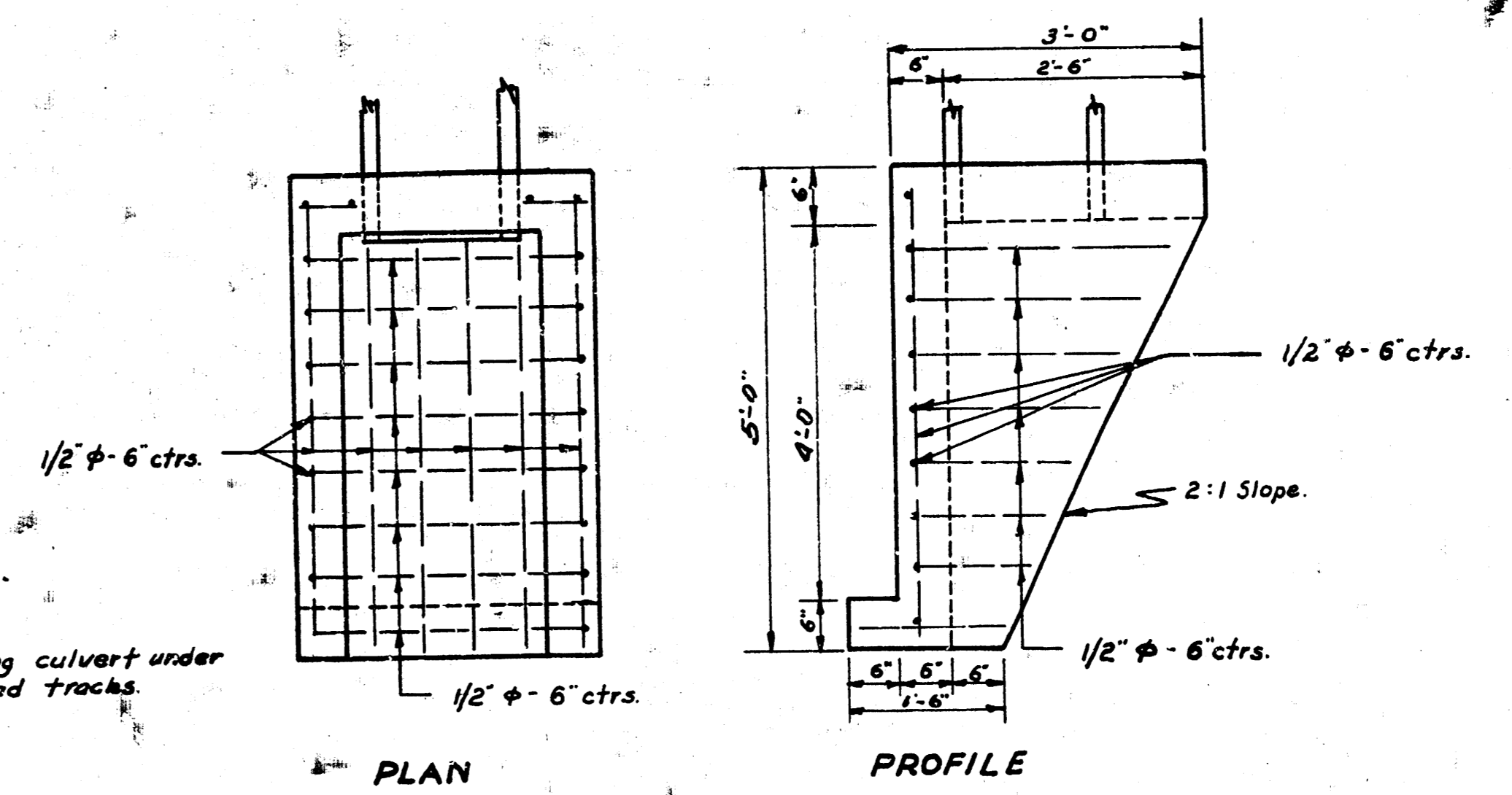
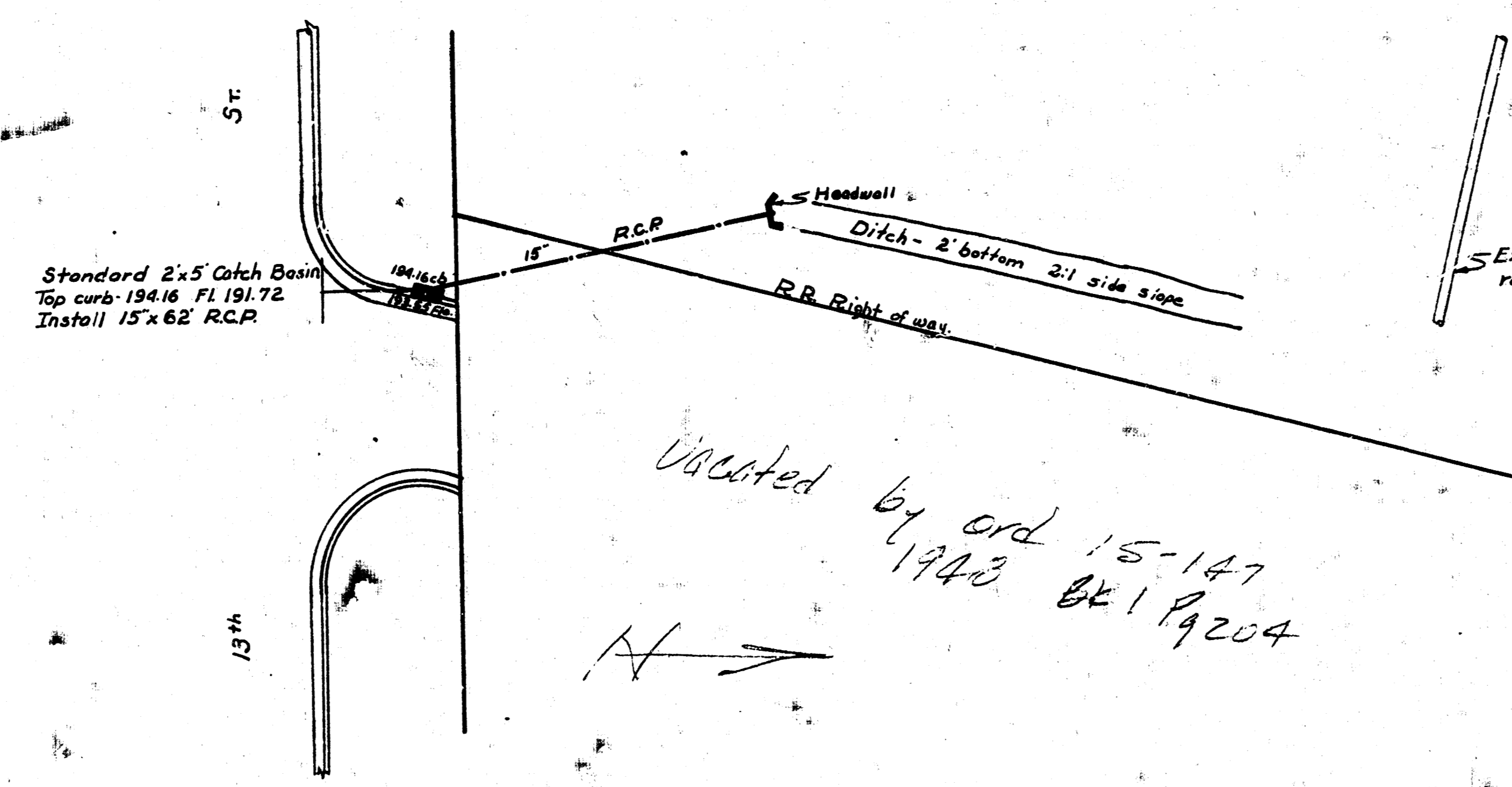


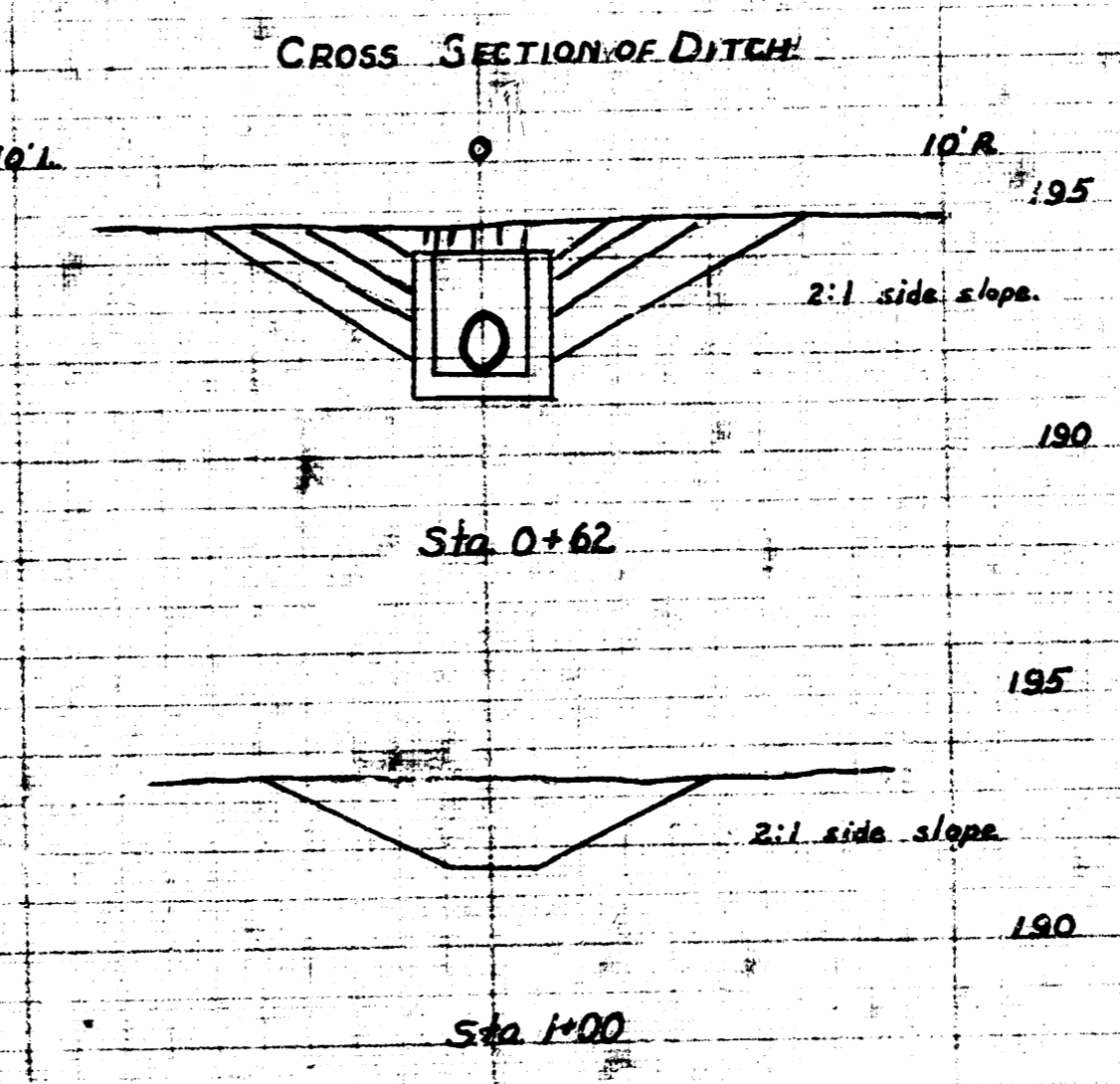
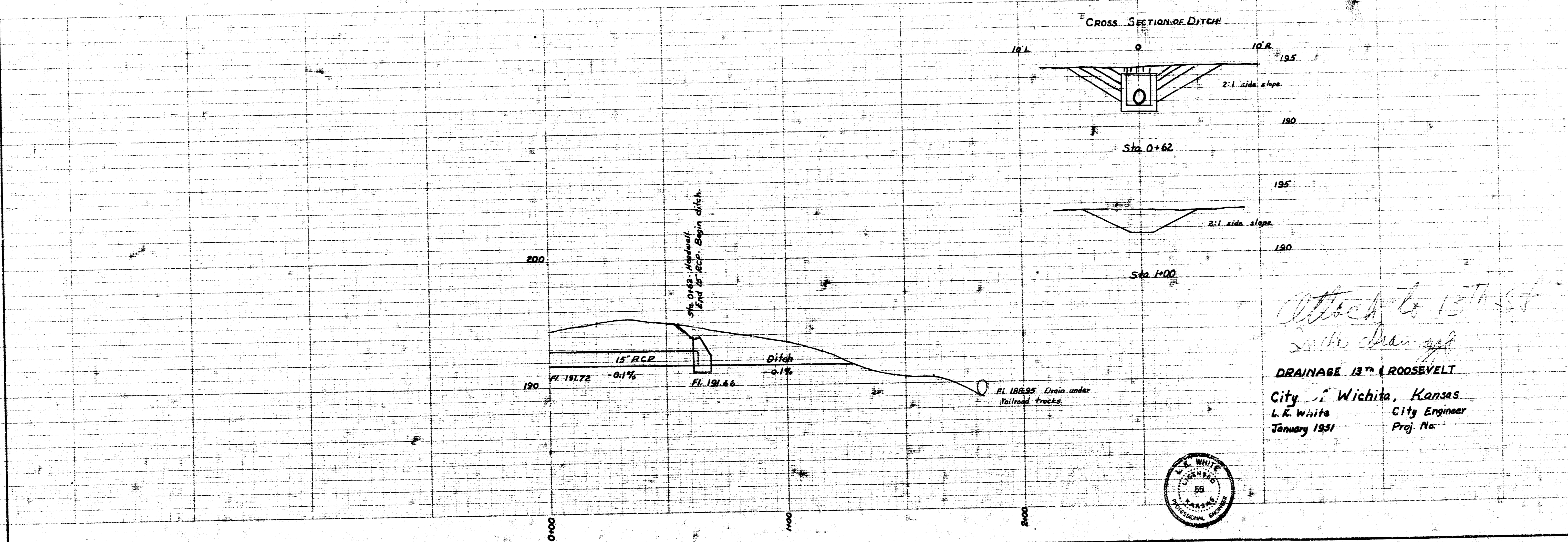
BK 017

BM. 195.07 60" Spike Southeast side Guy pole North side 13th & East line Exisco R/W.



DETAILS OF HEADWALL
Showing dimensions & steel placement
Scale 3/4"=1'

NOTE: Headwall may be constructed of brick.



*Attached to 13th St
with drainage*

DRAINAGE 13th & ROOSEVELT
 City of Wichita, Kansas
 L. K. White City Engineer
 January 1931 Proj. No.

