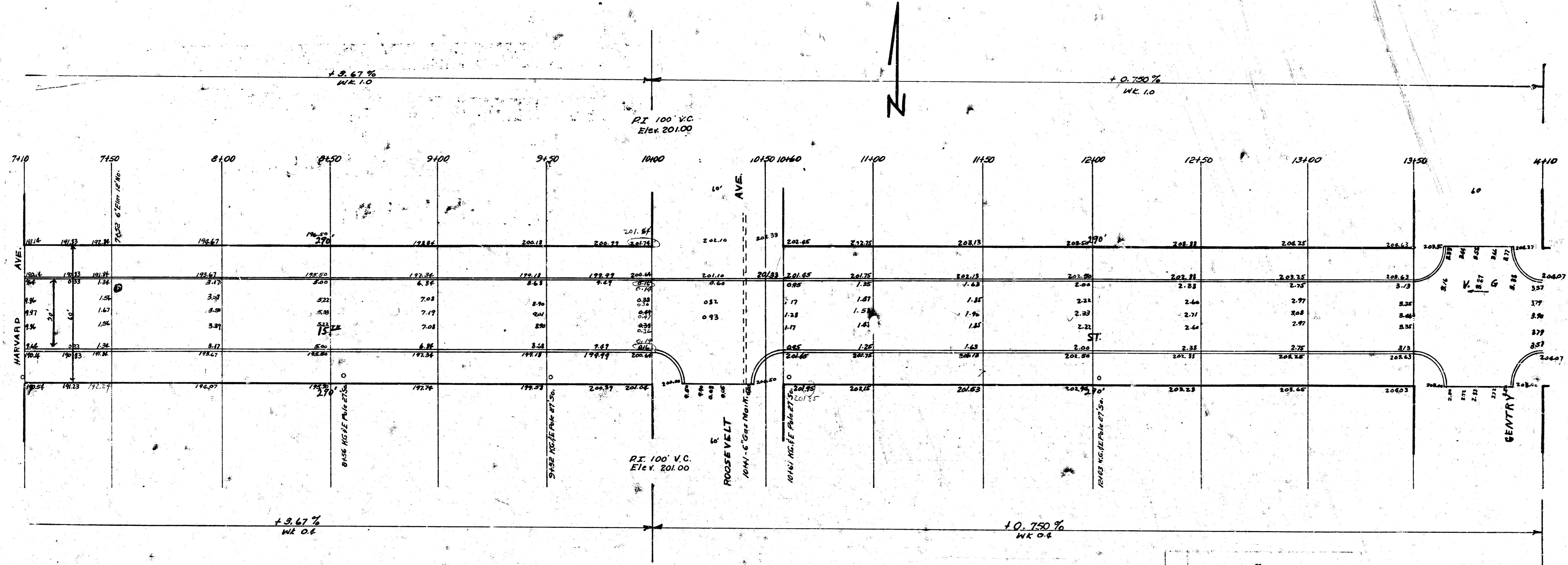
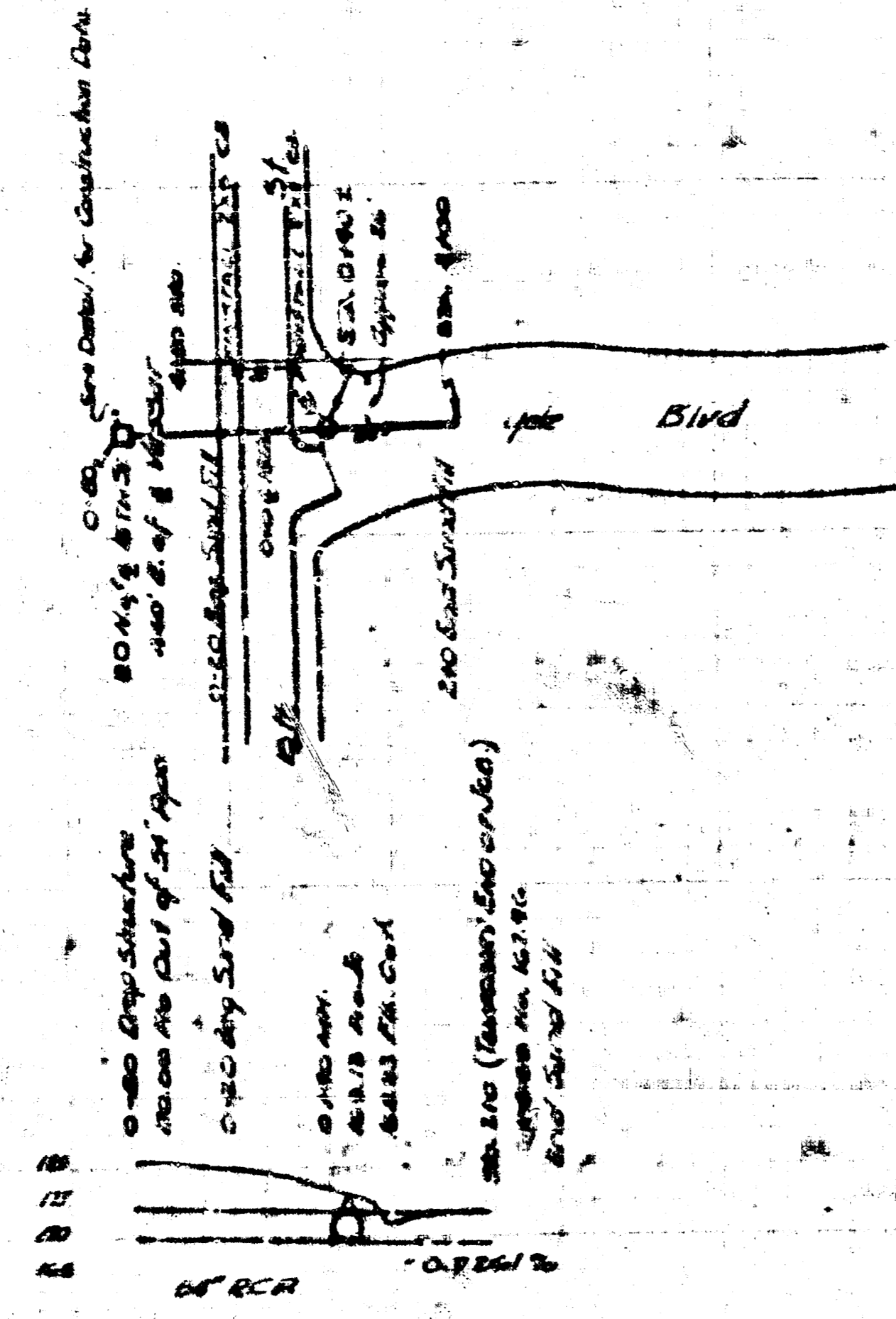


15<sup>th</sup> ST.  
 EL. VASSAR EL. HARVAAD  
 30' C&G CD  
 City of Wichita, Kansas  
 L.K. White City Engineer  
 September 1947



15<sup>th</sup> ST.  
 E.L. HARVARD      E.L. GENTRY  
 30' Conc. CB  
 City of Wichita, Kansas  
 L.K. WHITE      City Engineer  
 September 1947

1/2 shown



INCIDENTAL DRAINAGE 15TH ST.  
 EL. 1155.88 TO EL. GENTRY DR.  
 CITY OF WICHITA, KANS.  
 L. White City Engineer  
 May 1948 Proj. 118