

**CONSTRUCTION PLANS
FOR
STREET IMPROVEMENTS**

GENERAL NOTES:

1. Notify the following companies prior to any excavation:

Arkla Gas Company	942-8350
Bell Telephone	268-2256
Cablevision	269-3340
Gas Service Company	263-7511
Kansas Gas & Electric	261-6375
Kansas One-Call	1-800-344-7233

2. Limits of earthwork shall match existing ground elevations at the right-of-way line unless otherwise noted on the plans with a new finished grade elevation. When a new finished grade elevation is shown, the earthwork shall extend one foot beyond the right-of-way line and then sloped up or down using permissible slopes to match the existing ground surface.

3. The Contractor shall be responsible for preserving property irons. The Contractor will be required to re-establish any property irons which are damaged or destroyed by his construction operations. Such irons shall be re-established by a licensed land surveyor or a licensed professional engineer in accordance with state laws.

4. Properties within the project limits may have underground sprinkler systems in public right-of-way which conflict with new construction. Contractor will be required to remove such improvements should they not be removed by their owner at the time of construction of the project. The Contractor will be required to salvage all sprinkler heads and/or valves and give such material to their owner. Portions of underground sprinkler systems not in conflict with new construction shall be protected from damage and shall remain in place. All work in connection with underground sprinkler systems shall be considered as subsidiary to the contract pay items of work.

**WESTLINK VILLAGE 16TH ADDITION
TO
THE CITY OF WICHITA, KANSAS**

19TH STREET NORTH FROM W. LINE OF LOT 24 BLOCK 7 TO
THE E. LINE OF LOT 9 BLOCK 2

INDEX NO. 608141

PROJECT NO. 472-76-245-81591-000-000-001

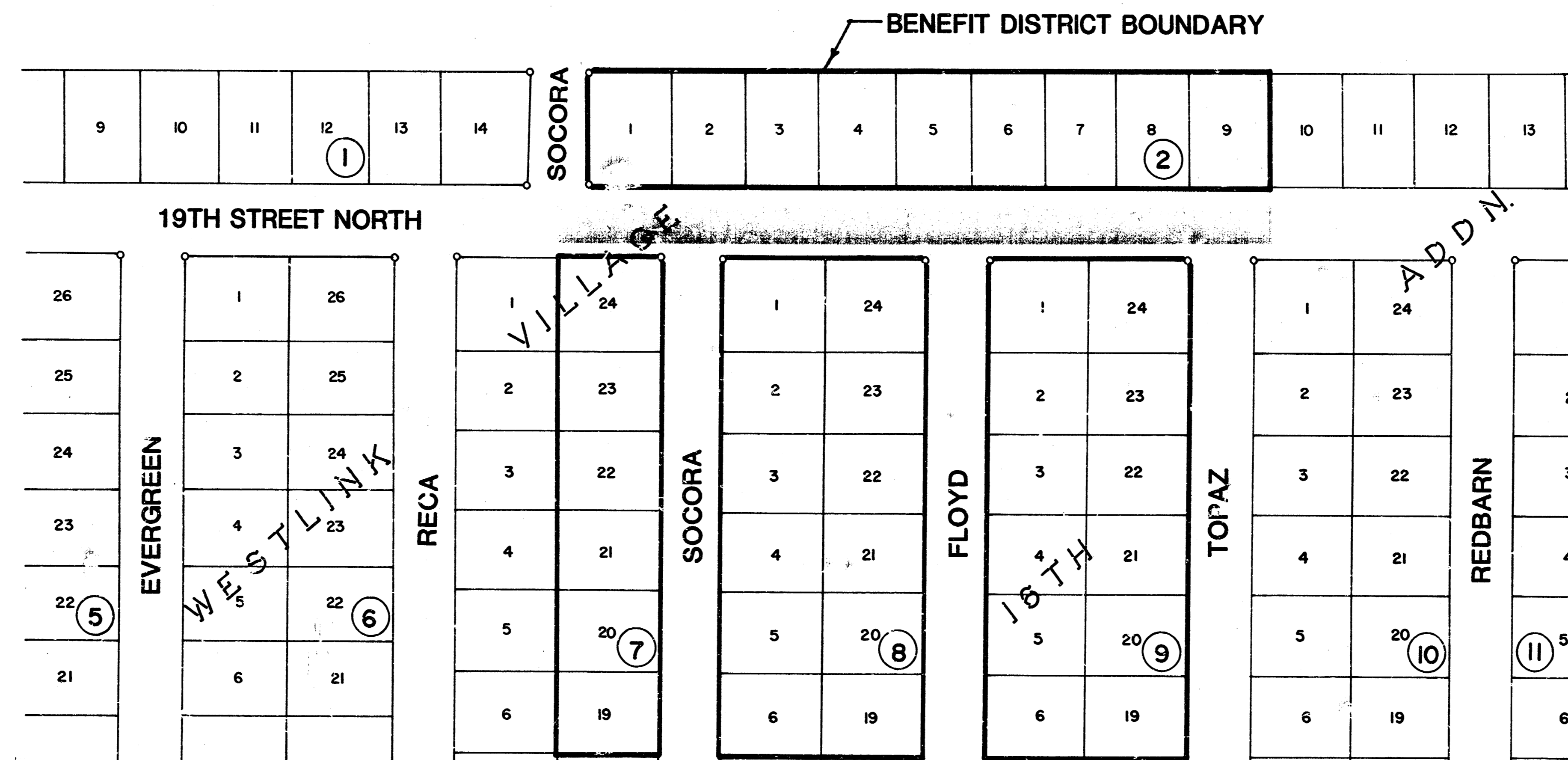
MICHAEL E. LINDEBAK, P. E. - CITY ENGINEER

INDEX

TITLE SHEET	SHEET 1
TYPICAL 37" PAVEMENT DETAILS	SHEET 2
19TH STREET NO. - STA. 0+00 TO 4+05	SHEET 3
19TH STREET NO. - STA. 4+05 TO 7+18.8	SHEET 4
CROSS SECTIONS STA. 0+00 TO STA. 2+00	SHEET 5
CROSS SECTIONS STA. 2+50 TO STA. 4+49	SHEET 6
CROSS SECTIONS STA. 4+93 TO STA. 7+18.8	SHEET 7
TYPE 1A CURB INLET	SHEET 8

BENCH MARKS

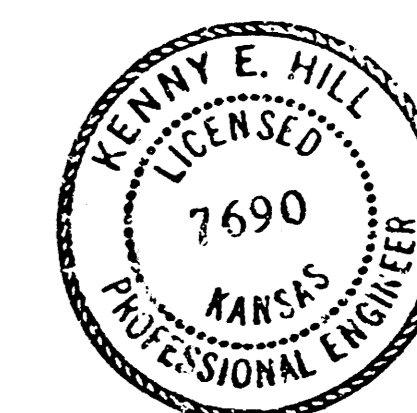
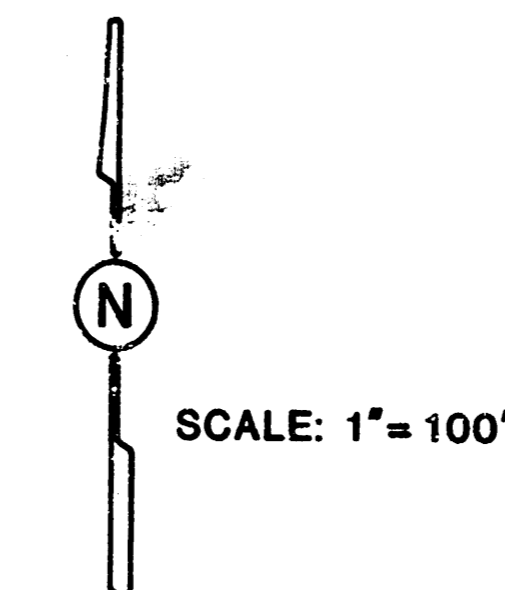
- B.M. 169.949 City of Wichita Standard Disk. 30' West and 90' South of Centerline Tyler and 21ST ST.
- B.M. 161.34 1/2" Cut on S.E. Cor. Cb. Inlet at S.W. Cor. of 19TH and Reca.
- B.M. 159.83 1/2" Cut on N.E. Cor. Cb. Inlet at N.W. Cor. 17TH and Topaz.



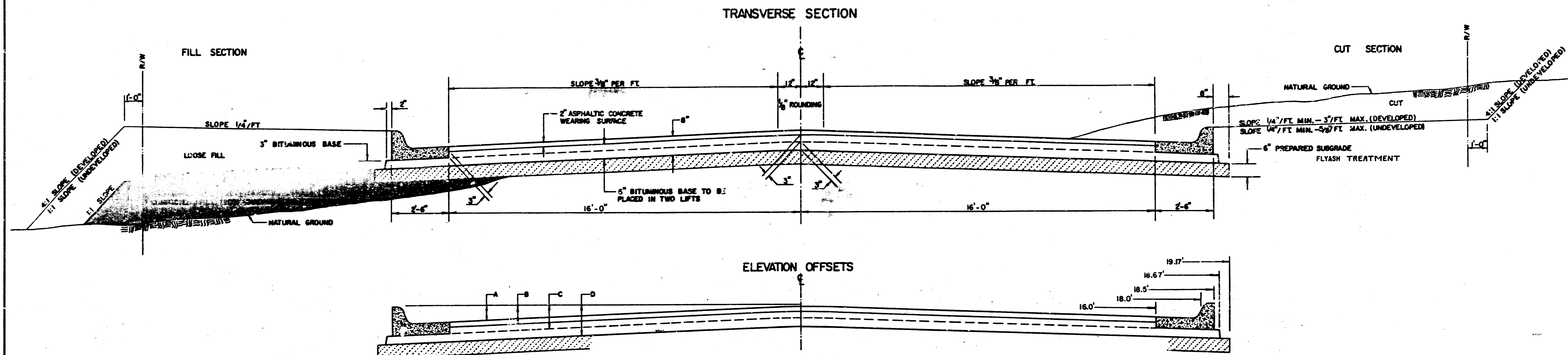
NOVEMBER 1986

PLANS PREPARED
BY

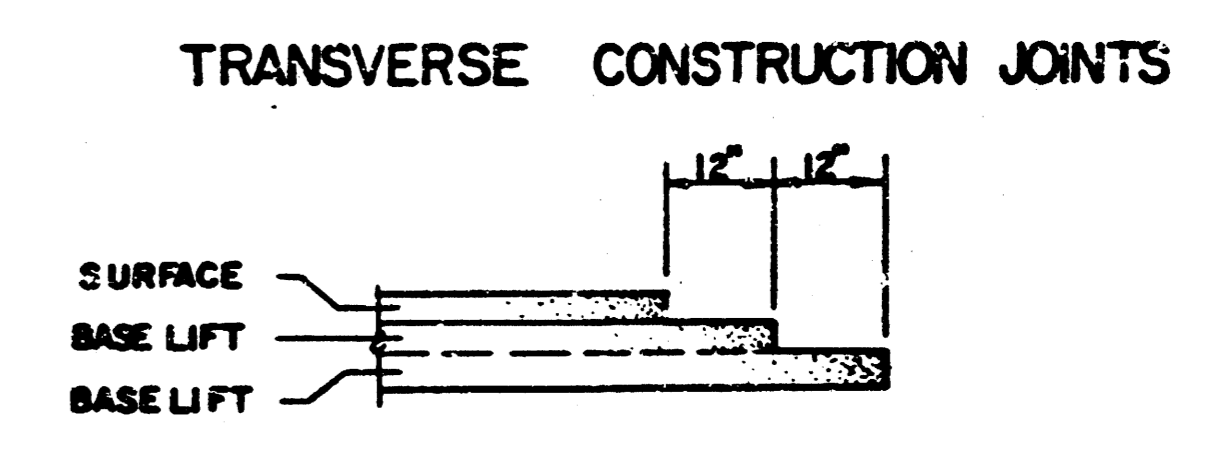
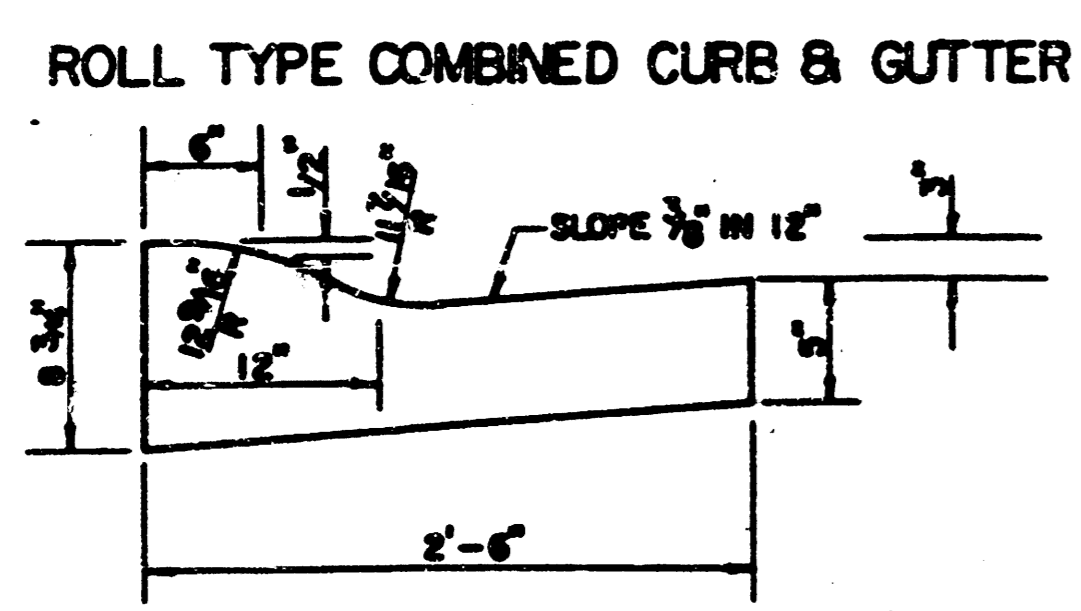
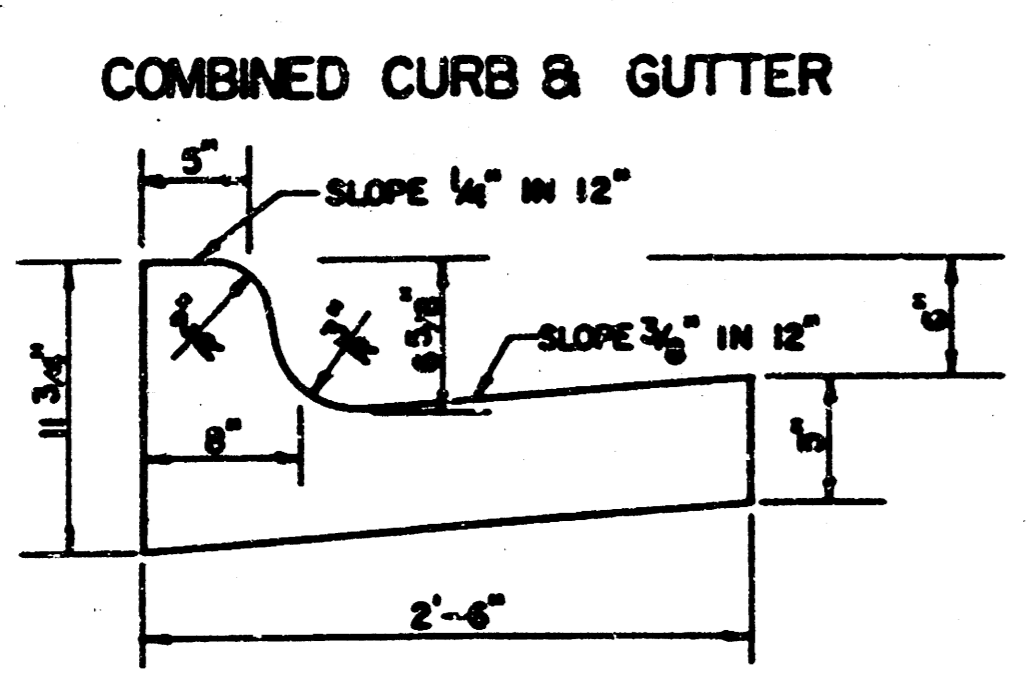
POE & ASSOCIATES OF KANSAS INC.
CONSULTING ENGINEERS
434 N. Oliver, Suite 110 • Wichita, KS 67208 • 316/665-4114



TYPICAL 37' PAVEMENT DETAILS



	DISTANCE FROM CENTERLINE (1" = 8' HORIZ)												
	0	2	4	6	8	10	12	14	16	18	18.5	18.67	19.17
A: TOP OF CURBS TO TOP OF SURFACE LIFT	.01	.05	.11	.18	.24	.30	.36	.43	.49	---	---	---	---
B: TOP OF CURBS TO TOP OF UPPER BASE LIFT	.17	.22	.28	.34	.40	.47	.53	.59	.65	---	---	---	---
C: TOP OF CURBS TO TOP OF LOWER BASE LIFT	.42	.47	.53	.59	.65	.72	.78	.84	.90	.97	.98	.99	---
D: TOP OF CURBS TO TOP OF SUBGRADE	.67	.72	.78	.84	.90	.97	1.03	1.09	1.15	1.22	1.23	1.24	1.25



- ### GENERAL NOTES
- 1) THE ASPHALTIC CONCRETE PAVEMENT BETWEEN THE COMBINED CURB AND GUTTER SHALL BE PAID AS SQUARE YARDS OF 8" ASPHALTIC CONCRETE (6" BITUMINOUS BASE).
 - 2) THE BITUMINOUS BASE UNDER AND BEHIND THE COMBINED CURB AND GUTTER SHALL BE PAID AS SQUARE YARDS OF 3" BITUMINOUS BASE.
 - 3) A TACK COAT OF EMULSIFIED ASPHALT (SC-1H OR CSS-1H) SHALL BE APPLIED AT AN APPROXIMATE RATE OF 6.00 GALLONS PER SQUARE YARD BETWEEN EACH LIFT OF ASPHALTIC MATERIAL.
 - 4) BITUMINOUS BASE AND ASPHALTIC CONCRETE WEARING SURFACE SHALL BE PLACED WITH A LAYDOWN MACHINE HAVING AUTOMATIC CONTROLS FOR LINE AND GRADE.
 - 5) CONSTRUCTION JOINTS IN EACH LIFT SHALL BE STAGGERED A MINIMUM DISTANCE OF ONE (1) FOOT FROM JOINTS IN PRECEDING LIFTS AND PLACED SO THAT A JOINT WILL BE CONSTRUCTED ON THE CENTERLINE OF THE TOP LIFT.
 - 6) CONTRACTOR TO BID ONLY ONE SUBGRADE TREATMENT ALTERNATE WHEN ALTERNATES ARE PROVIDED IN THE PROPOSAL AND CONTRACT. THE ALTERNATE CHOSEN BY THE SUCCESSFUL BIDDER SHALL BE USED IN CONSTRUCTING THIS PROJECT.

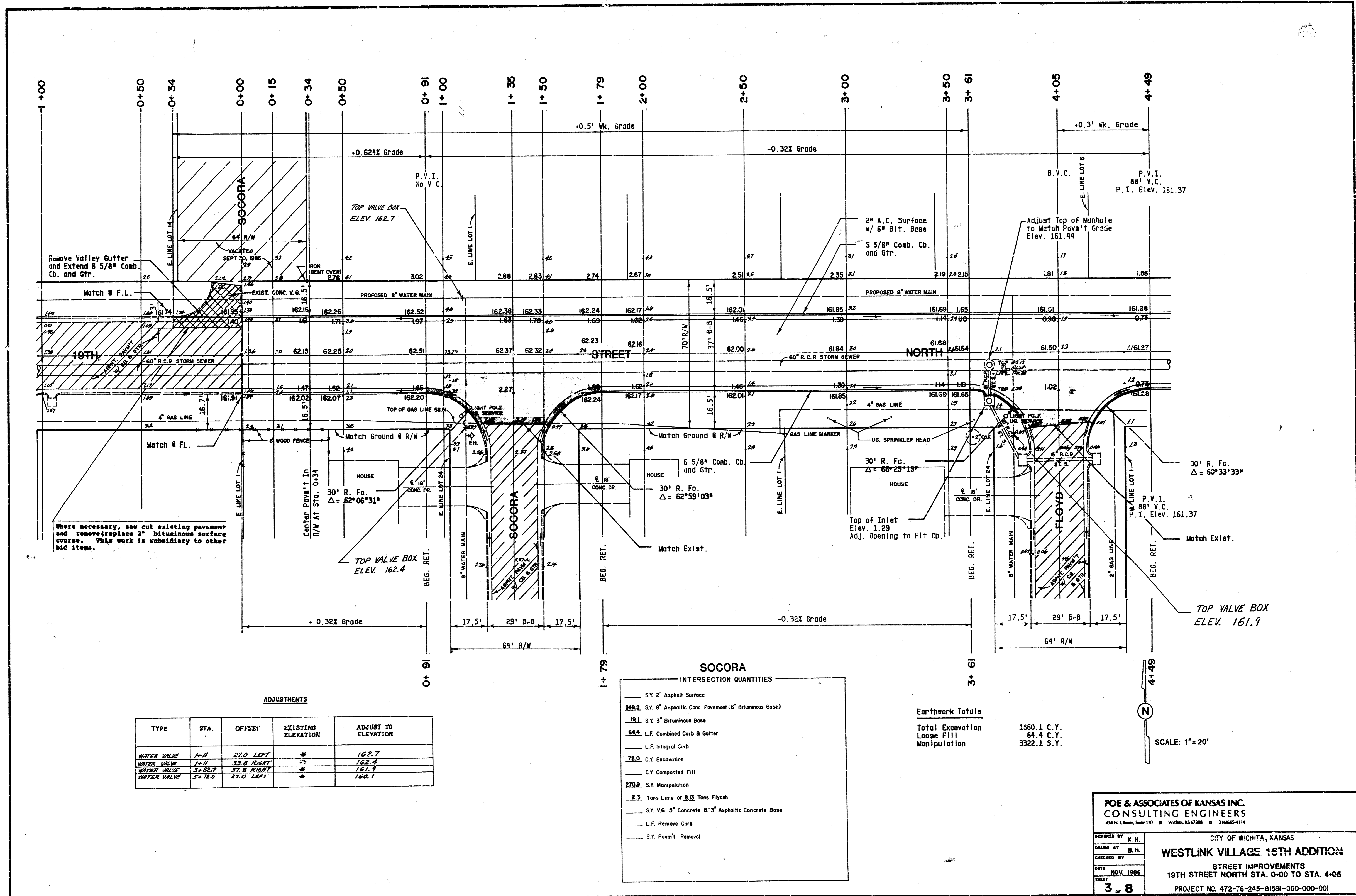
TRANSVERSE CONSTRUCTION JOINTS SHALL BE CONSTRUCTED IN FLEXIBLE BASE PAVEMENTS AT LOCATIONS WHERE PAVEMENT JOINTS EXISTING FLEXIBLE BASE PAVEMENT AS SHOWN BY THE DETAIL. ALL COSTS ASSOCIATED WITH THE CONSTRUCTION OF THE TRANSVERSE JOINT SHALL BE INCLUDED IN THE BID PRICE FOR SQUARE YARDS OF ASPHALTIC CONCRETE (6" BITUMINOUS BASE).

POE & ASSOCIATES OF KANSAS INC.
CONSULTING ENGINEERS
434 N. Oliver, Suite 110 • Wichita, KS 67208 • 316-663-4114

ENGINEER: _____
DATE: _____
SHEET: 2 OF 8

8 INCH RESIDENTIAL ASPHALTIC CONCRETE PAVEMENT WITH 6 INCH BITUMINOUS BASE
CITY OF WICHITA, KANSAS
PROJECT NUMBER: 472-76-245-81591-000-000-001

FILMED FROM THE BEST AVAILABLE COPY....



Where necessary, saw cut existing pavement and remove/replace 2" bituminous surface course. This work is subsidiary to other bid items.

ADJUSTMENTS

TYPE	STA.	OFFSET	EXISTING ELEVATION	ADJUST TO ELEVATION
WATER VALVE	1+11	27.0 LEFT	*	162.7
WATER VALVE	1+11	33.8 RIGHT	*	162.4
WATER VALVE	3+82.7	37.8 RIGHT	*	161.9
WATER VALVE	5+72.0	27.0 LEFT	*	160.1

SOCORA INTERSECTION QUANTITIES

- S.Y. 2" Asphalt Surface
- 248.2 S.Y. 8" Asphaltic Conc. Pavement (6" Bituminous Base)
- 191 S.Y. 3" Bituminous Base
- 64.4 L.F. Combined Curb & Gutter
- L.F. Integral Curb
- 72.0 C.Y. Excavation
- C.Y. Compacted Fill
- 270.9 S.Y. Manipulation
- 2.3 Tons Lime or 8.13 Tons Flyash
- S.Y. V.G. 5" Concrete 8" 3" Asphaltic Concrete Base
- L.F. Remove Curb
- S.Y. Pavn't Removal

Earthwork Totals

Total Excavation	1860.1 C.Y.
Loose Fill	64.4 C.Y.
Manipulation	3322.1 S.Y.

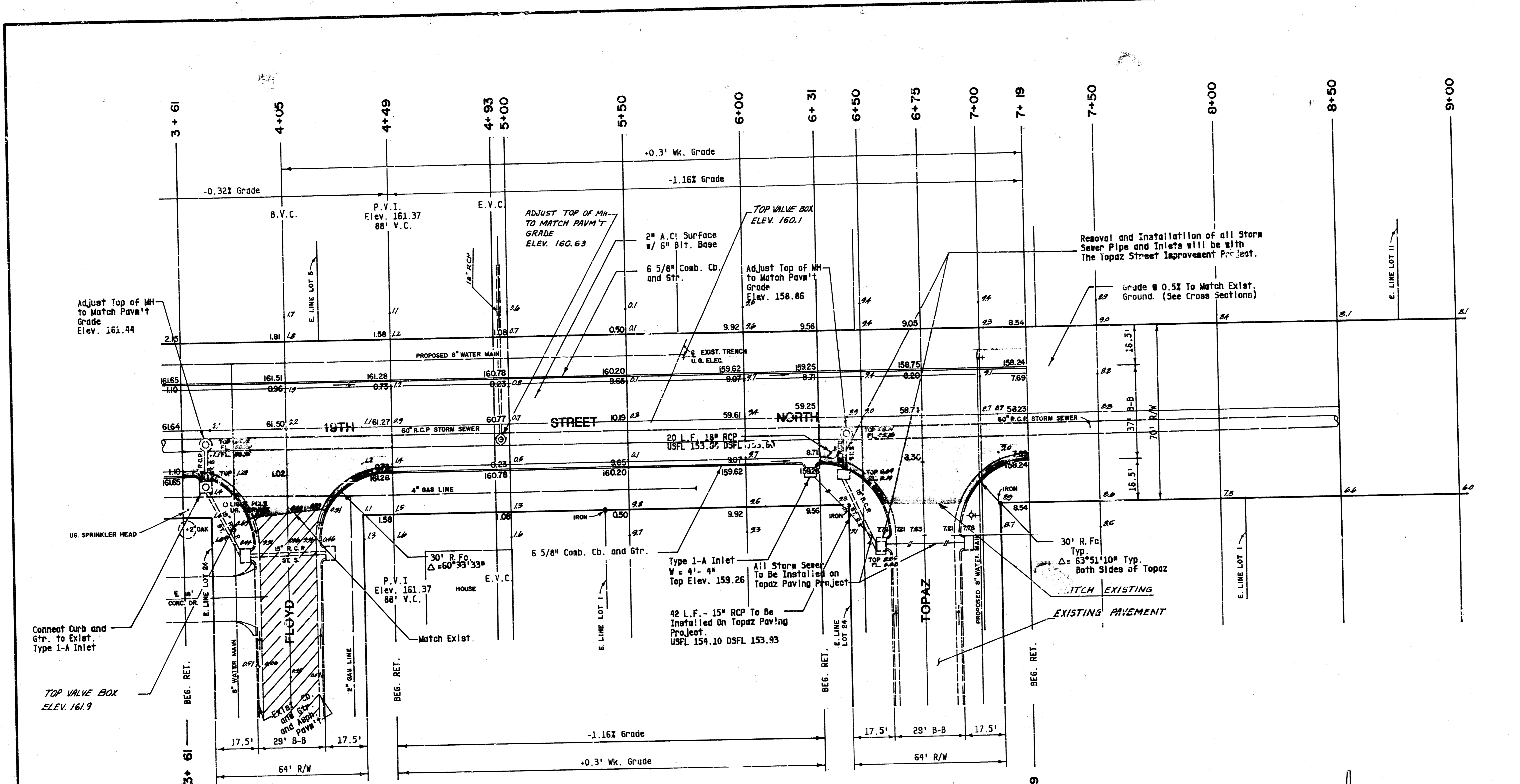
POE & ASSOCIATES OF KANSAS INC.
CONSULTING ENGINEERS
434 N. Oliver, Suite 110 • Wichita, KS 67208 • 316-685-4114

CITY OF WICHITA, KANSAS
WESTLINK VILLAGE 16TH ADDITION
 STREET IMPROVEMENTS
 19TH STREET NORTH STA. 0+00 TO STA. 4+05
 PROJECT NO. 472-76-245-81591-000-000-001

DESIGNED BY K.H.
 DRAWN BY B.H.
 CHECKED BY
 DATE NOV. 1986
 SHEET 3 OF 8

SCALE: 1" = 20'

FILMED FROM THE BEST AVAILABLE COPY

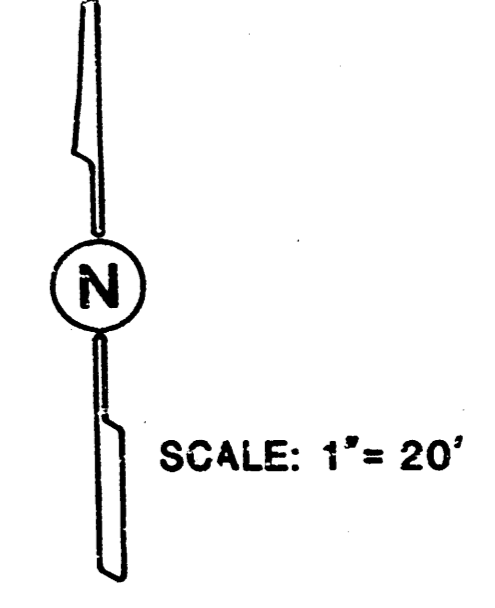


FLOYD INTERSECTION QUANTITIES

- S.Y. 2" Asphalt Surface
- 244.8 S.Y. 8" Asphaltic Conc. Pavement (6" Bituminous Base)
- 19.7 S.Y. 5" Bituminous Base
- 66.8 L.F. Combined Curb & Gutter
- L.F. Integral Curb
- 07.0 C.Y. Excavation
- C.Y. Compacted Fill
- 288.2 S.Y. Manipulation
- 2.28 Tons Lime or 8.02 Tons Flyash
- S.Y. V.G. 5" Concrete & 3" Asphaltic Concrete Base
- L.F. Remove Curb
- S.Y. Pavement Removal

TOPAZ INTERSECTION QUANTITIES

- S.Y. 2" Asphalt Surface
- 248.1 S.Y. 8" Asphaltic Conc. Pavement (6" Bituminous Base)
- 19.8 S.Y. 5" Bituminous Base
- 66.9 L.F. Combined Curb & Gutter
- L.F. Integral Curb
- 182.0 C.Y. Excavation
- C.Y. Compacted Fill
- 289.8 S.Y. Manipulation
- 2.22 Tons Lime or 8.02 Tons Flyash
- S.Y. V.G. 5" Concrete & 3" Asphaltic Concrete Base
- L.F. Remove Curb
- S.Y. Pavement Removal



POE & ASSOCIATES OF KANSAS INC.
 CONSULTING ENGINEERS
 434 N. Olive, Suite 110 • Wichita, KS 67208 • 316-685-4114

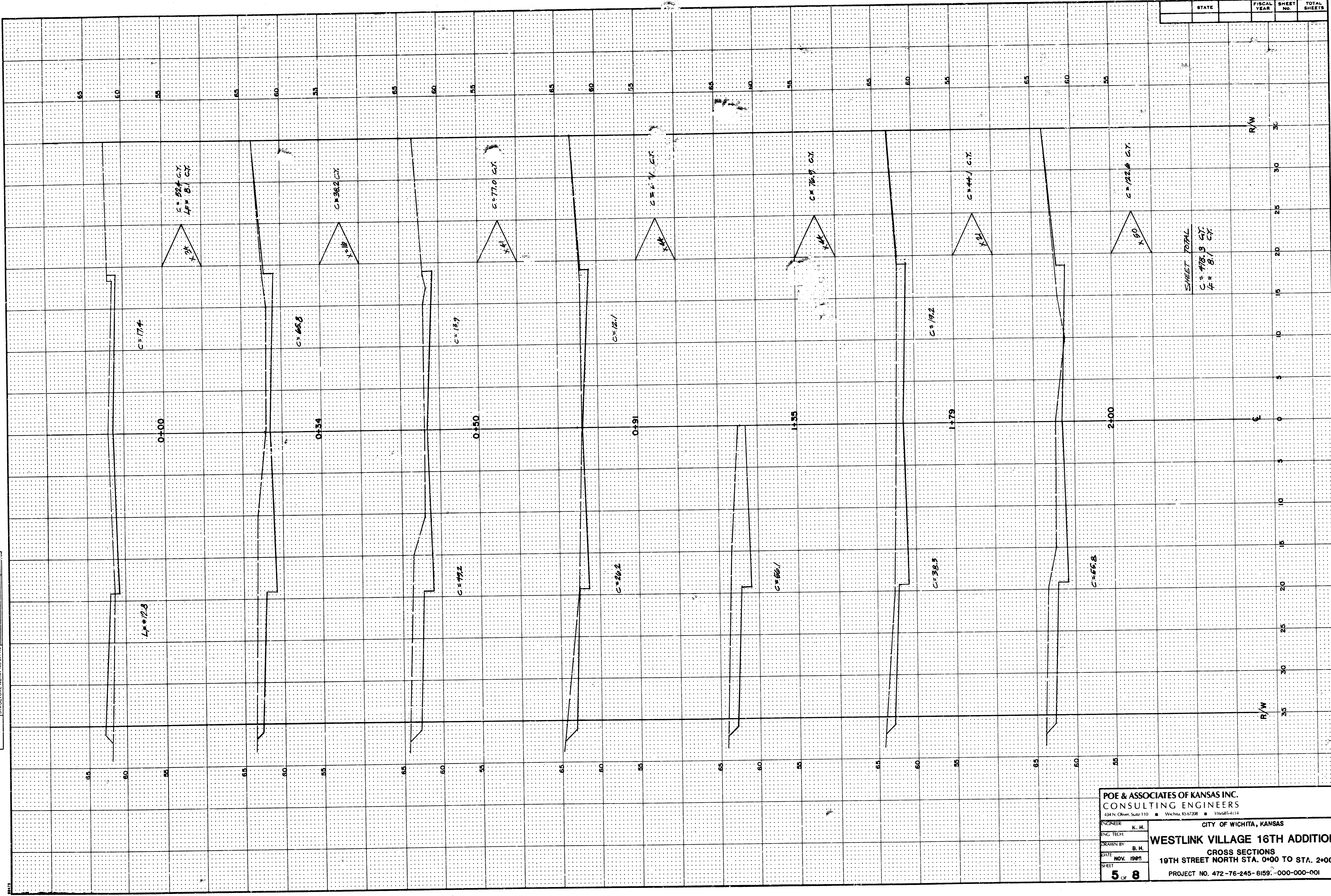
CITY OF WICHITA, KANSAS
WESTLINK VILLAGE 15TH ADDITION
 STREET IMPROVEMENTS
 19TH STREET NORTH STA. 4+05 TO STA. 7+18.8
 PROJECT NO. 472-76-245-81591-000-000-000

DESIGNED BY: K.H.
 DRAWN BY: B.H.
 CHECKED BY:
 DATE: NOV. 1986
 SHEET: **4 of 8**

FILMED FROM THE BEST AVAILABLE COPY

PLAN	SURVEYED	DATE
	PLOTTED	BY
NOTE BOOK NO.	CHECKED BY	
	RT. OF WAY CHECKED	

PROFILE	SURVEYED	DATE
	GRADES CHECKED	BY
NOTE BOOK NO.	CHECKED BY	
	RT. OF WAY CHECKED	



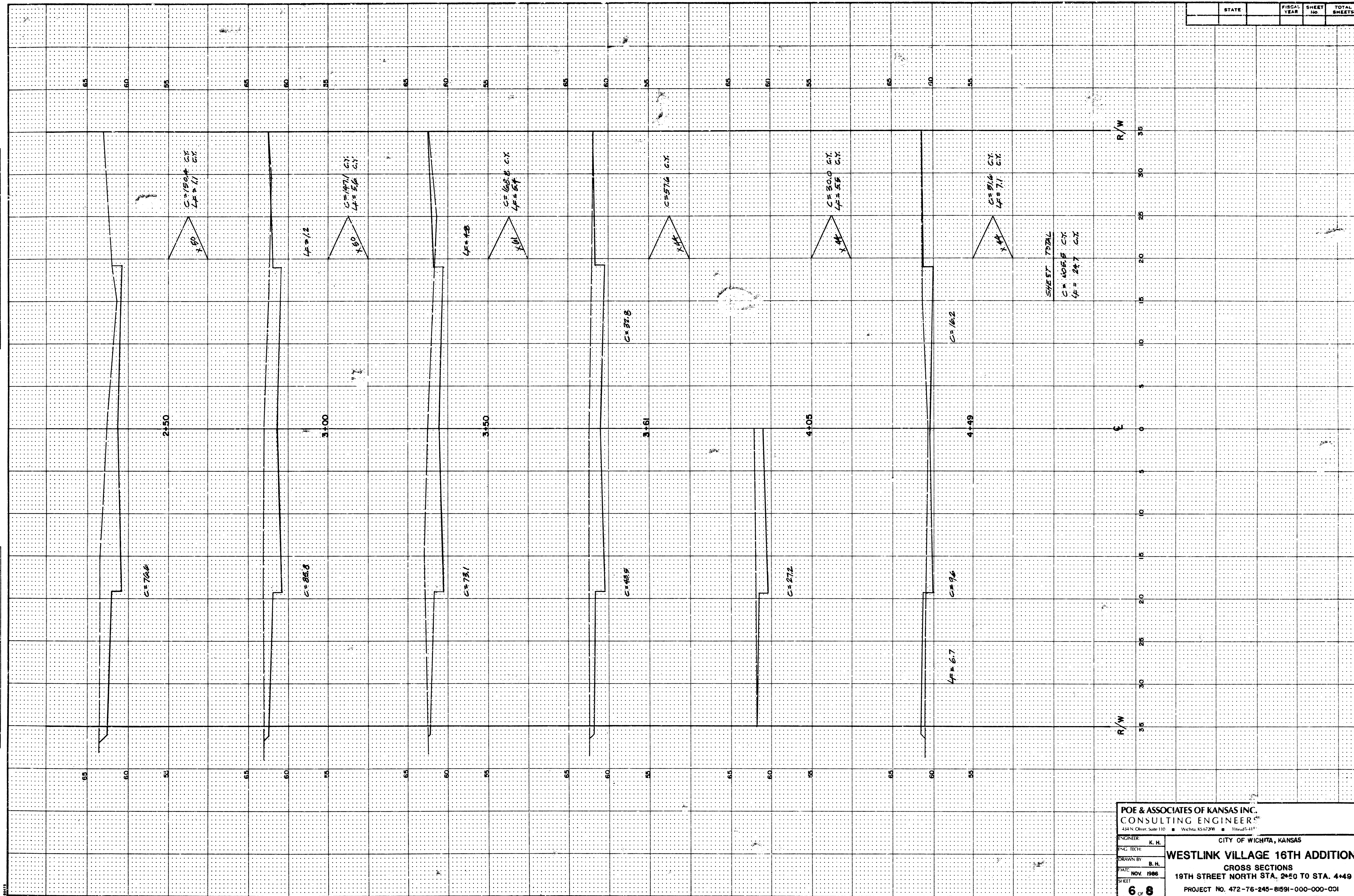
POE & ASSOCIATES OF KANSAS INC.
 CONSULTING ENGINEERS
434 N. Oliver, Suite 110 ■ Wichita, KS 67208 ■ 316/683-1114
 ENGINEER: K. H.
 INC. TECH: K. H.
 DRAWN BY: B. H.
 DATE: NOV. 1989
 SHEET: **5 OF 8**

CITY OF WICHITA, KANSAS
WESTLINK VILLAGE 16TH ADDITION
 CROSS SECTIONS
 19TH STREET NORTH STA. 0+00 TO STA. 2+00
 PROJECT NO. 472-76-245-8159-000-000-001

FILMED FROM THE BEST
 AVAILABLE COPY...

PLAN	
SURVEYED	BY
NOTE BOOK	DATE
ALIGNMENT CHECKED	
RT. OF WAY CHECKED	
NO.	

PROFILE	
SURVEYED	BY
NOTE BOOK	DATE
GRADES CHECKED	
B. M. NOTED	
SPECIAL INSTRUCTIONS	
NO.	

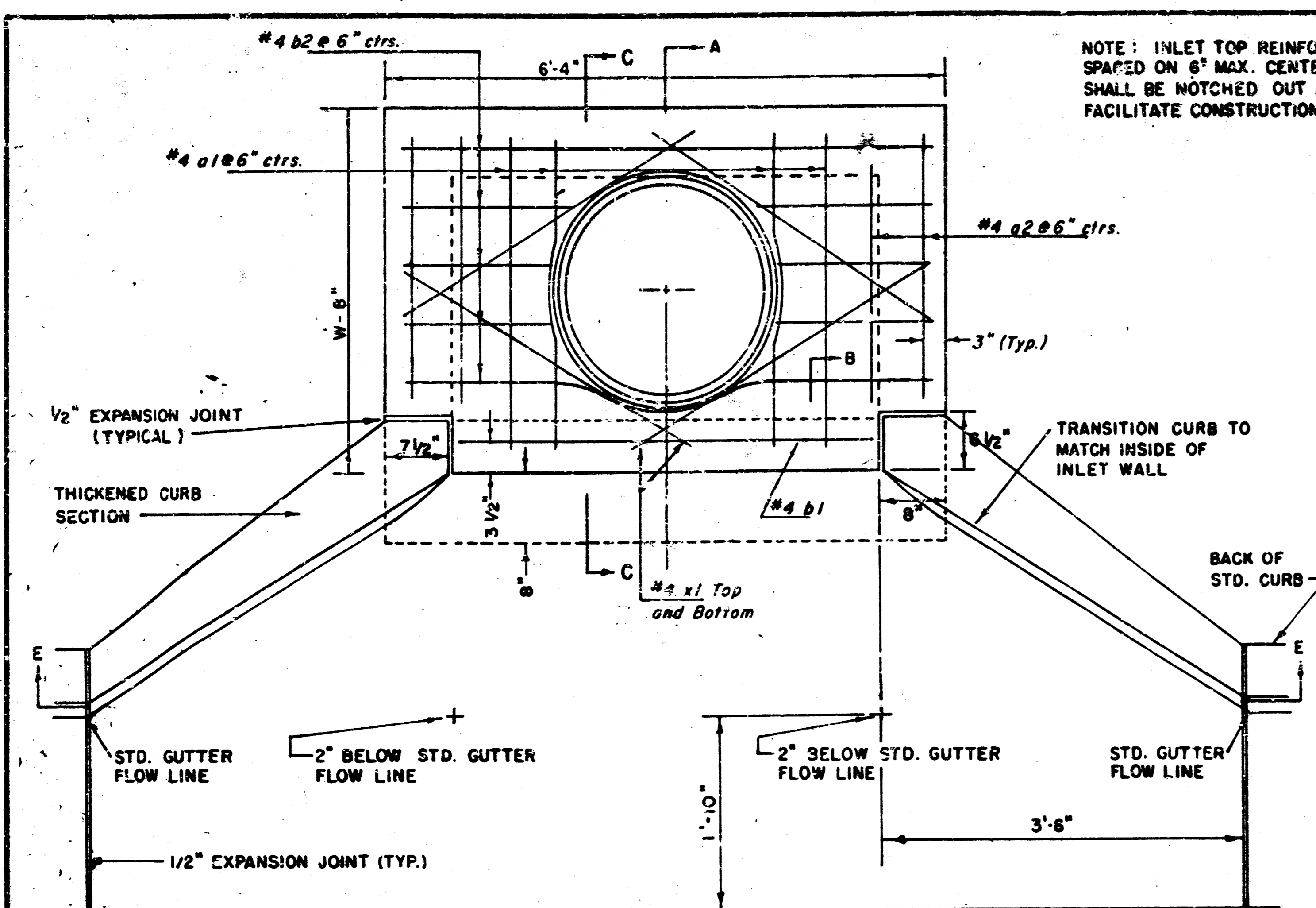


POE & ASSOCIATES OF KANSAS INC.
CONSULTING ENGINEER
434 N. Olive, Suite 110 • Wichita, KS 67208 • 313-625-1111

ENGINEER: K. H.
CITY OF WICHITA, KANSAS
CITY TECH: B. H.
DRAWN BY: B. H.
STATE: NOV. 1986
SHEET: 6 of 8

WESTLINK VILLAGE 16TH ADDITION
CROSS SECTIONS
19TH STREET NORTH STA. 2+50 TO STA. 4+49
PROJECT NO. 472-76-245-81591-000-000-001

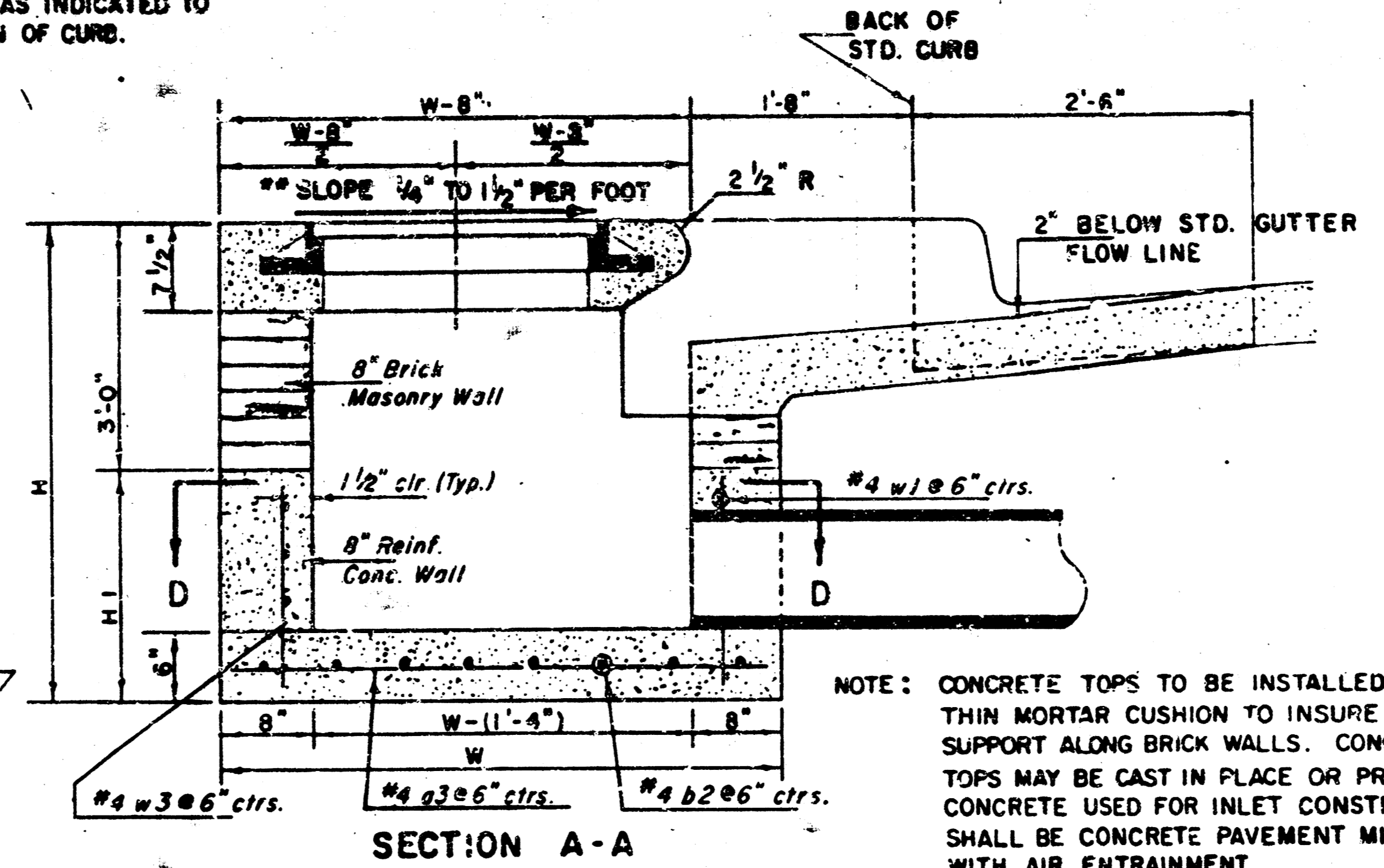
FILMED FROM THE BEST AVAILABLE COPY



NOTE: EXPANSION JOINT ONLY IN CURB AREA WITH CONC. PAVEMENT.

PLAN

NOTE: INLET TOP REINFORCING SHALL BE SPACED ON 6" MAX. CENTERS. INLET LIDS SHALL BE NOTCHED OUT AS INDICATED TO FACILITATE CONSTRUCTION OF CURB.



NOTE: CONCRETE TOPS TO BE INSTALLED ON THIN MORTAR CUSHION TO INSURE FULL SUPPORT ALONG BRICK WALLS. CONCRETE TOPS MAY BE CAST IN PLACE OR PRECAST. CONCRETE USED FOR INLET CONSTRUCTION SHALL BE CONCRETE PAVEMENT MIX WITH AIR ENTRAINMENT.

SECTION A-A

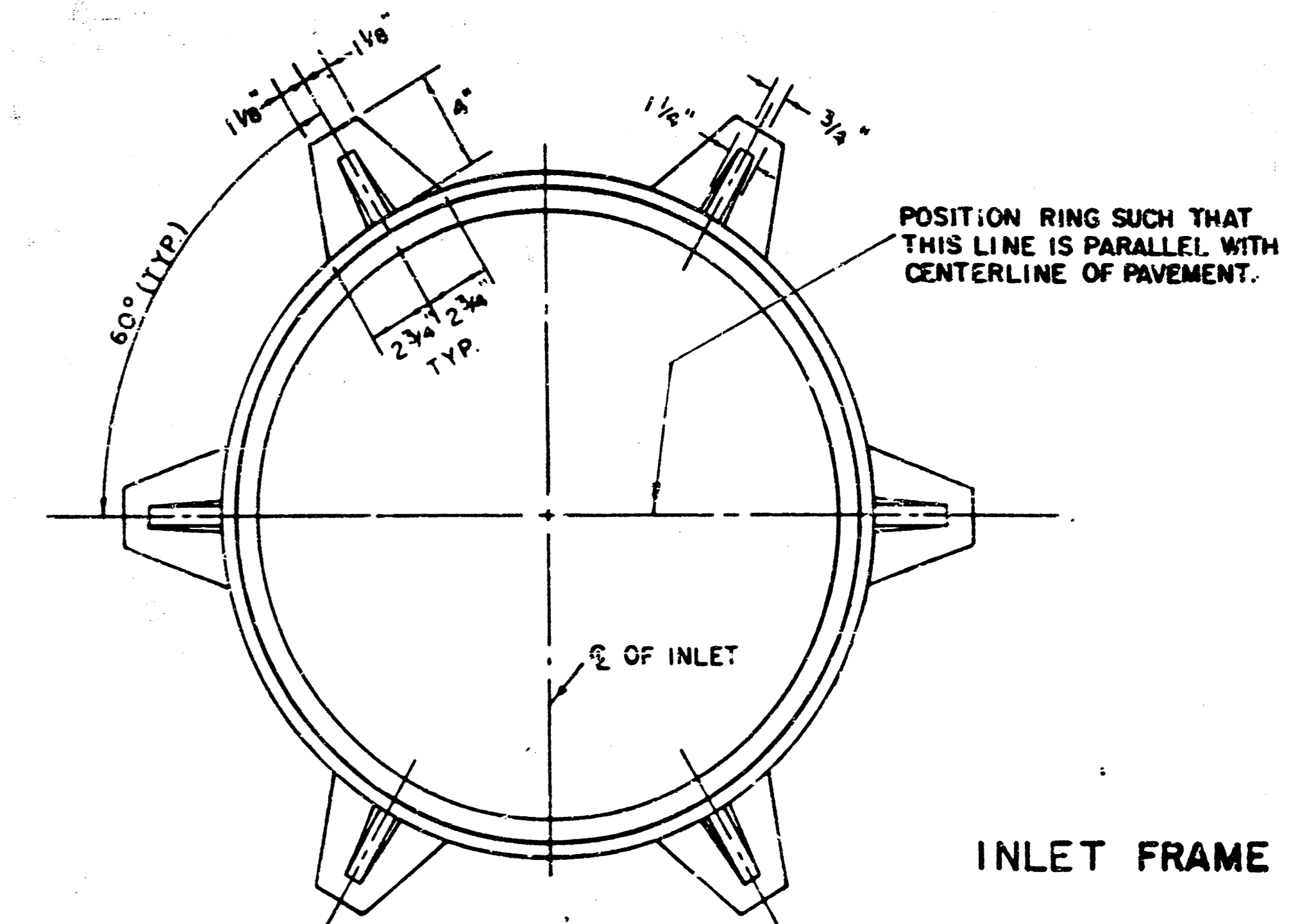
NOTE: CONTRACTOR SHALL HAVE THE OPTION OF CONSTRUCTING 8" BRICK MASONRY WALLS BETWEEN THE CONCRETE INLET BASE AND TOP ON THIS INLET WHEN W = 6'-4" AND H = 7'-0" OR LESS.

ADDITIONAL CURB AND GUTTER CONSTRUCTION NECESSARY TO CONNECT SET-BACK INLET TO PAVEMENT WILL BE PAID FOR AT THE UNIT PRICE BID FOR EACH INLET HOOKUP.

INLET INVERT SHALL BE SHAPED WITH 8 SACK SAND MIX CONCRETE TO CREATE FLOW CHANNELS AND TO INCREASE HYDRAULIC EFFICIENCY SUCH THAT THE INLET WILL BE SELF-CLEANING BETWEEN ALL INLET AND/OR OUTLET PIPES.

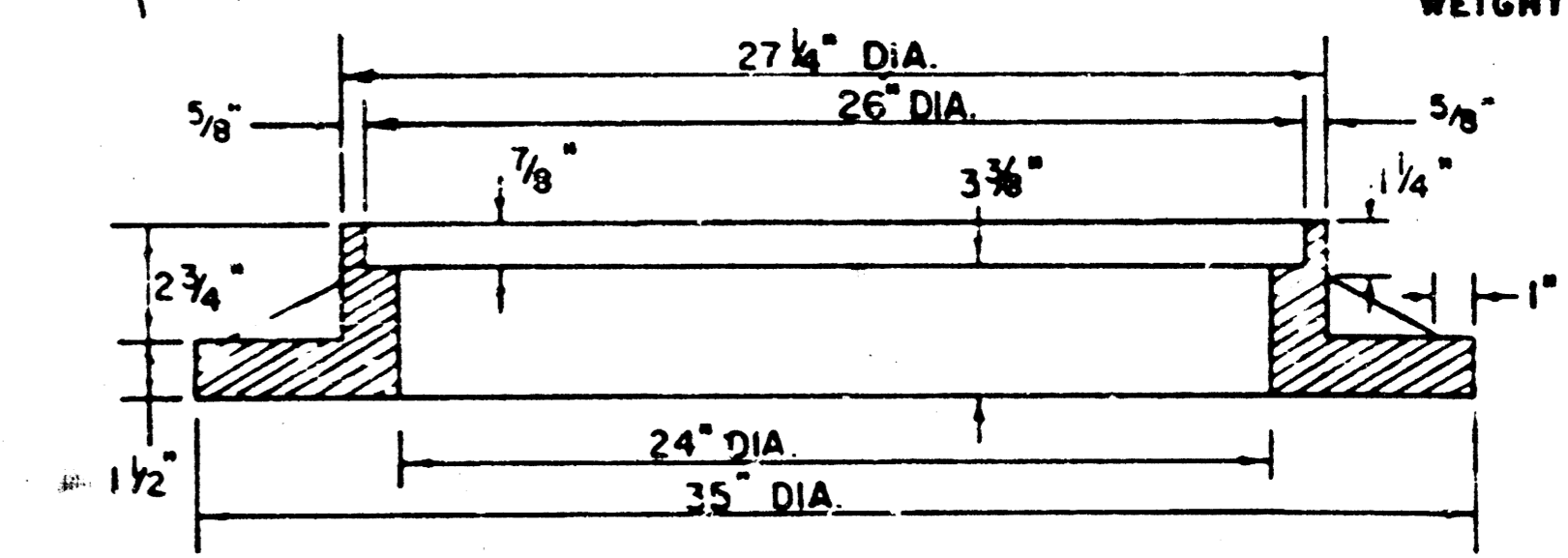
THE ENDS OF ALL PIPES INSTALLED IN INLETS SHALL BE CUT OFF FLUSH WITH THE INSIDE FACE OF THE INLET WALL.

** NOTE: Slope of Inlet Top to match Sidewalk or Parking Slopes within Limits indicated.



INLET FRAME

WEIGHT = 180 LBS.

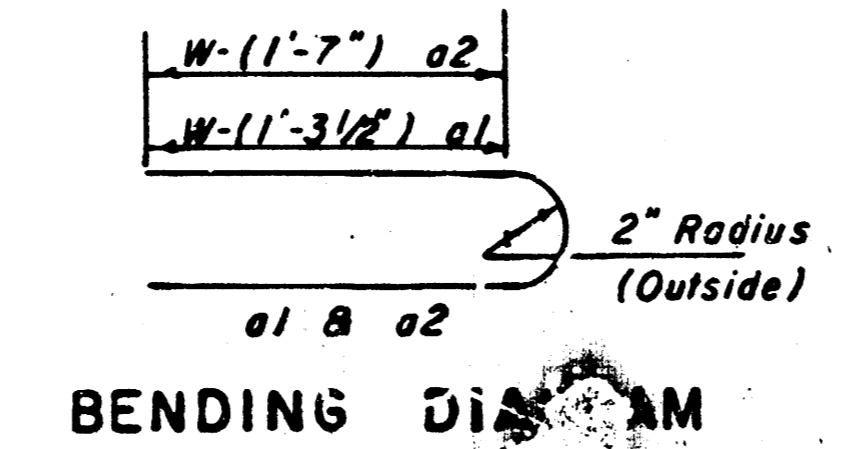


SEE CITY OF WICHITA STANDARD MANHOLE FRAME AND COVER DETAIL SHEET FOR COVER DETAILS TO BE USED WITH INLET FRAME.

PRECAST SLAB AND FLOOR REINFORCING											
Mark	Size	W=4'-4"		W=5'-4"		W=6'-4"		W=7'-4"		W=8'-4"	
		No.	Length	No.	Length	No.	Length	No.	Length	No.	Length
a1	#4	6	5'-2"	8	8'-0"	6	10'-2"	6	12'-2"	6	14'-2"
a2	#4	4	6'-0"	4	8'-0"	4	10'-0"	4	12'-0"	4	14'-0"
a3	#4	13	4'-1"	13	5'-1"	13	6'-1"	13	7'-1"	13	8'-1"
b1	#4	7	4'-9"	1	4'-9"	1	4'-9"	1	4'-9"	1	4'-9"
b2	#4	23	6'-7"	29	6'-1"	35	6'-1"	41	6'-1"	47	6'-1"
a1	#4	8	3'-10"	8	4'-2"	8	4'-6"	8	4'-10"	8	5'-2"

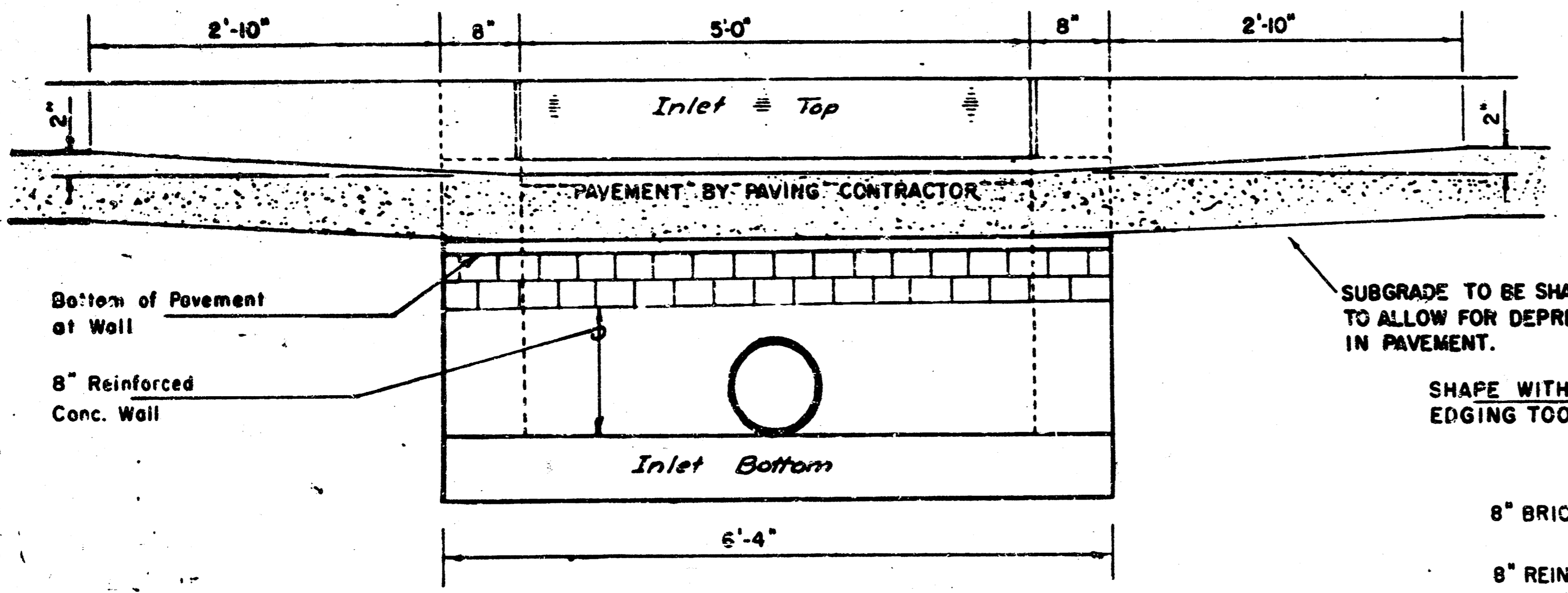
WALL REINFORCING											
Mark	Size	W=4'-4"		W=5'-4"		W=6'-4"		W=7'-4"		W=8'-4"	
		No.	Length	No.	Length	No.	Length	No.	Length	No.	Length
w1	#4	1	6'-7"	1	6'-7"	1	6'-7"	1	6'-7"	1	6'-7"
w2	#4	1	4'-1"	1	5'-1"	1	6'-1"	1	7'-1"	1	8'-1"
w3	#4	32	2	36	2	40	2	44	2	48	2

* Field bend or cut Reinforcing as required for clearance.
 ① 4(HI-12"); (HI-12") Round down to nearest 0.5"
 ② HI-3"

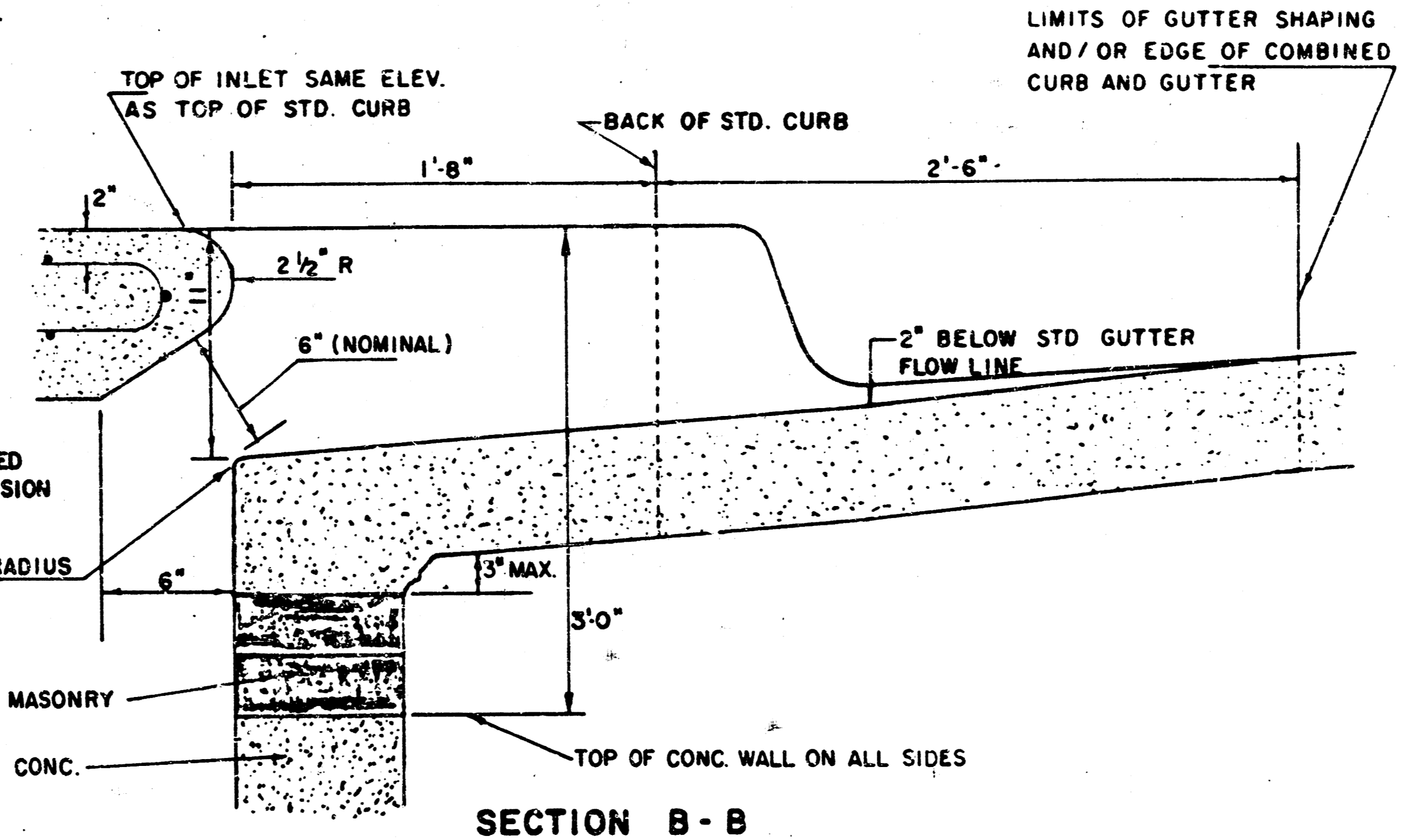


BENDING DIAG

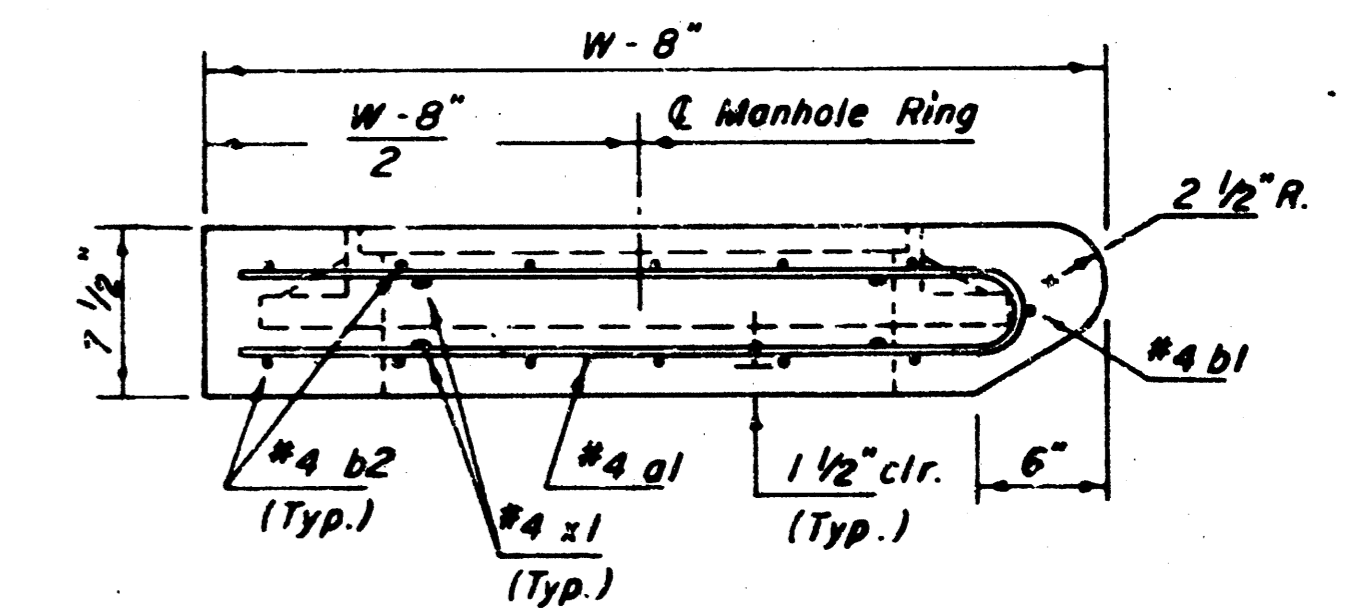
STANDARD CURB INLET PRECAST TOPS			
W	PRE-CAST TOP SIZE	PIPE SIZE	CU. YD. CONC.
4'-4"	3'6" x 6'4" x 7 1/2"	21" & SMALLER	0.38 ±
5'-4"	4'8" x 6'4" x 7 1/2"	24" & 30"	0.51 ±
6'-4"	5'8" x 6'4" x 7 1/2"	36" & 42"	0.64 ±
7'-4"	6'8" x 6'4" x 7 1/2"	48" & 54"	0.77 ±
8'-4"	7'8" x 6'4" x 7 1/2"	60" & 66"	0.90 ±



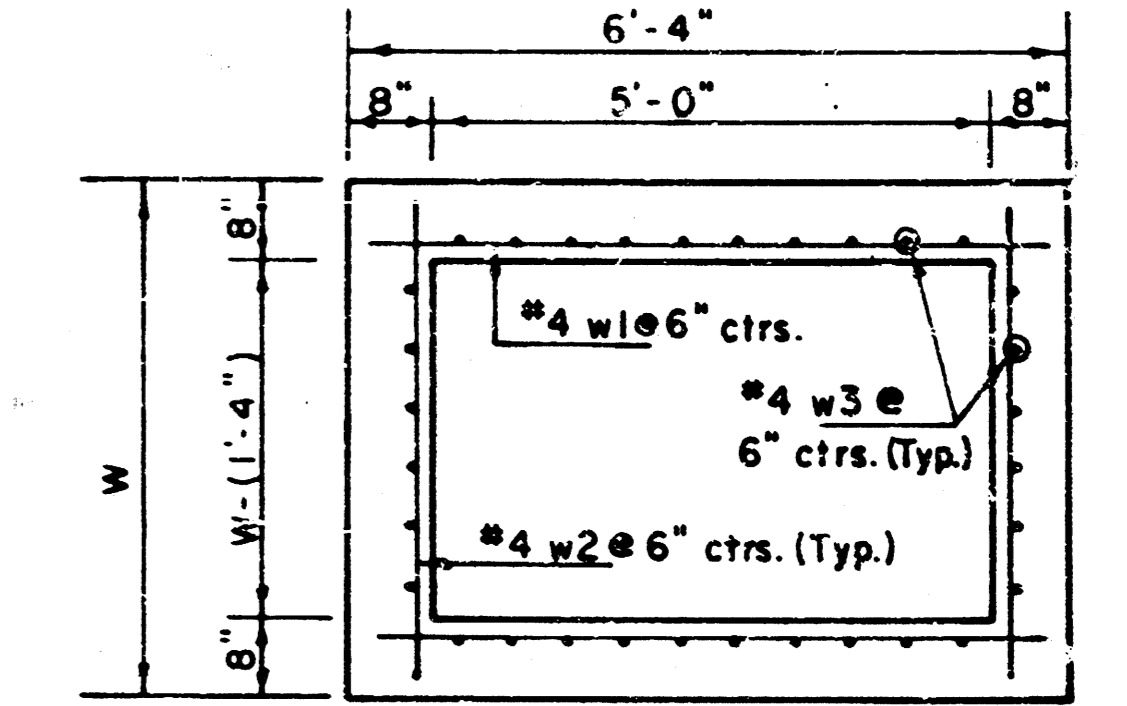
SECTION E-E



SECTION B-B



SECTION C-C



SECTION D-D

REVISION 11-30-1983 SHEET 8 of 8
 REVISION 12-31-1984 Revised 2-16-1989

DETAIL STANDARD TYPE IA CURB INLET
 CITY OF WICHITA, KANSAS
 INLET OPENING = 6" x 5' 0"

JUNE 1984

FILMED FROM THE BEST AVAILABLE COPY