

LOT GRADING PLAN ABERDEEN 3RD ADDITION

IN WICHITA, SHERMAN COUNTY, KANSAS
DATED MAR 11, 1999

PREPARED BY
PRE ASSOCIATES OF KANSAS, INC.
LAND SURVEYING & ENGINEERING

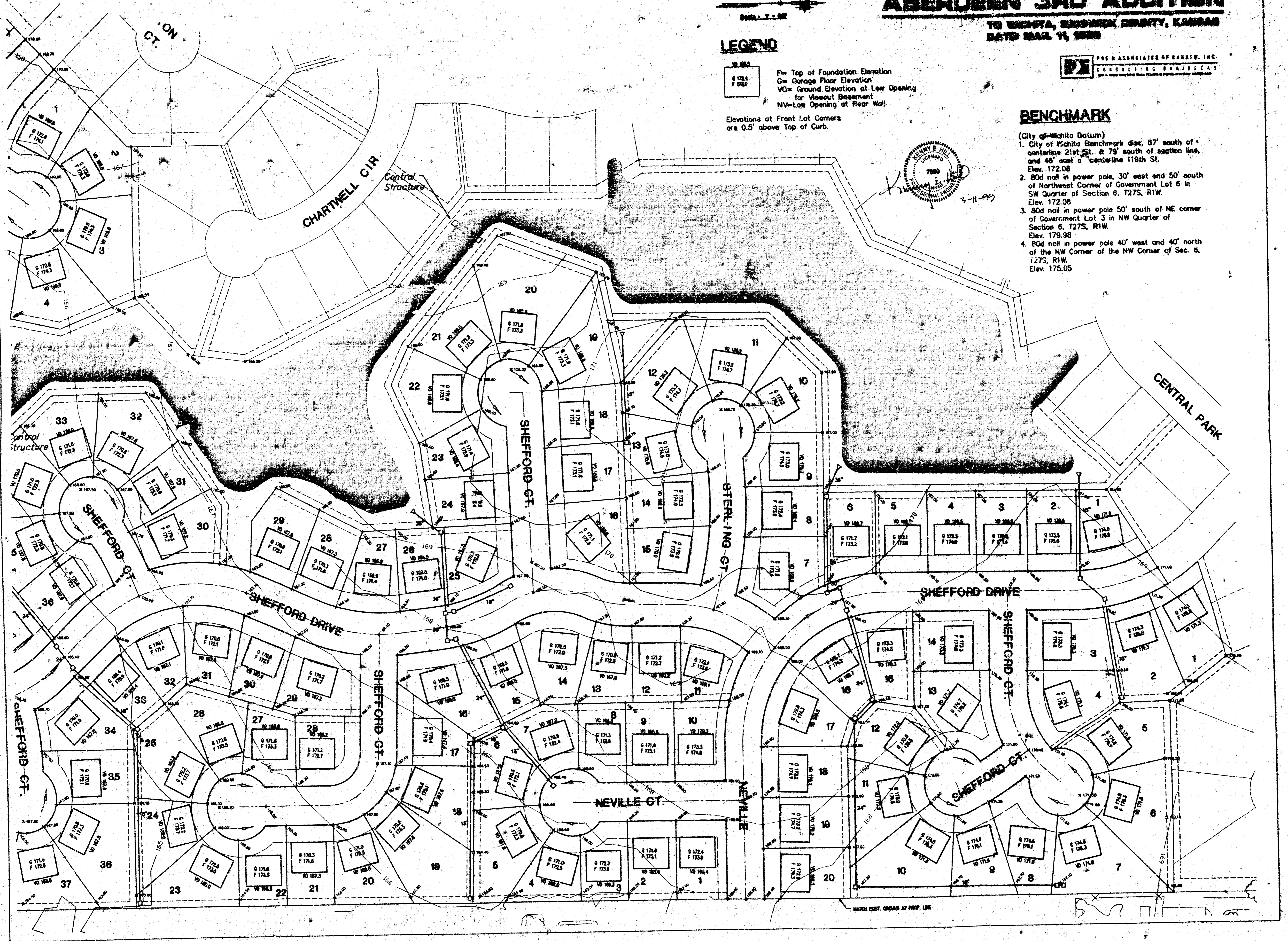
LEGEND

F= Top of Foundation Elevation
 G= Garage Floor Elevation
 VO= Ground Elevation at Low Opening
 for Viewout Basement
 NV=Low Opening at Rear Wall

Elevations at Front Lot Corners
are 0.5' above Top of Curb.

BENCHMARK

- (City of Wichita Datum)
- City of Wichita Benchmark disc, 67' south of centerline 21st St. & 79' south of section line, and 48' east of centerline 119th St.
Elev. 172.06
 - 80d nail in power pole, 30' east and 50' south of Northwest Corner of Government Lot 6 in SW Quarter of Section 8, T27S, R1W.
Elev. 172.06
 - 80d nail in power pole 50' south of NE corner of Government Lot 3 in NW Quarter of Section 6, T27S, R1W.
Elev. 179.98
 - 80d nail in power pole 40' west and 40' north of the NW Corner of the NW Corner of Sec. 8, T27S, R1W.
Elev. 175.05



MATCH EXIST. GRADE AT PROP. LINE

ABERDEEN 3RD ADDITION

TO WICHITA, SEDGWICK COUNTY, KANSAS
DATE MAR. 11, 1999

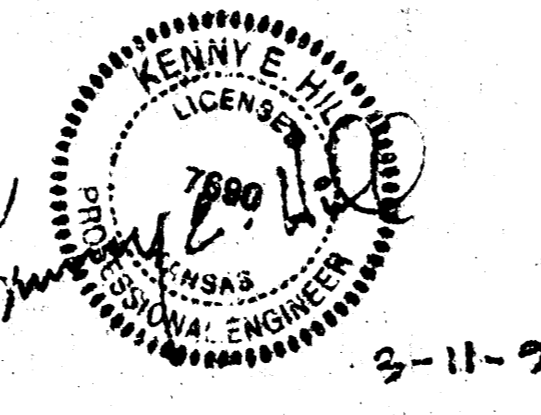
PRE & ASSOCIATES OF KANSAS, INC.
CONSULTING ENGINEERS
2002 S. WILSON AVE. SUITE 200 WICHITA, KS 67201-1000
PHONE: 316-261-1100 FAX: 316-261-1101

BENCHMARK

- (City of Wichita Datum)
1. City of Wichita Benchmark disc, 67' south of centerline 21st St. & 79' south of section line, and 46' east of centerline 119th St. Elev. 172.08
 2. 80d nail in power pole, 30' east and 50' south of Northwest Corner of Government Lot 6 in SW Quarter of Section 6, T27S, R1W. Elev. 172.08
 3. 80d nail in power pole 50' south of NE corner of Government Lot 3 in NW Quarter of Section 6, T27S, R1W. Elev. 179.98
 4. 80d nail in power pole 40' west and 40' north of the NW Corner of the NW Corner of Sec. 6, T27S, R1W. Elev. 175.05

LEGEND

- F= Top of Foundation Elevation
 - G= Garage Floor Elevation
 - VD=Low Opening at Rear Wall for Viewout Basement
 - NV=No Viewout Basement
- Elevations at Front Lot Corners are 0.5' above Top of Curb.



EVANGEL ASSEMBLY OF GOD ADDITION

