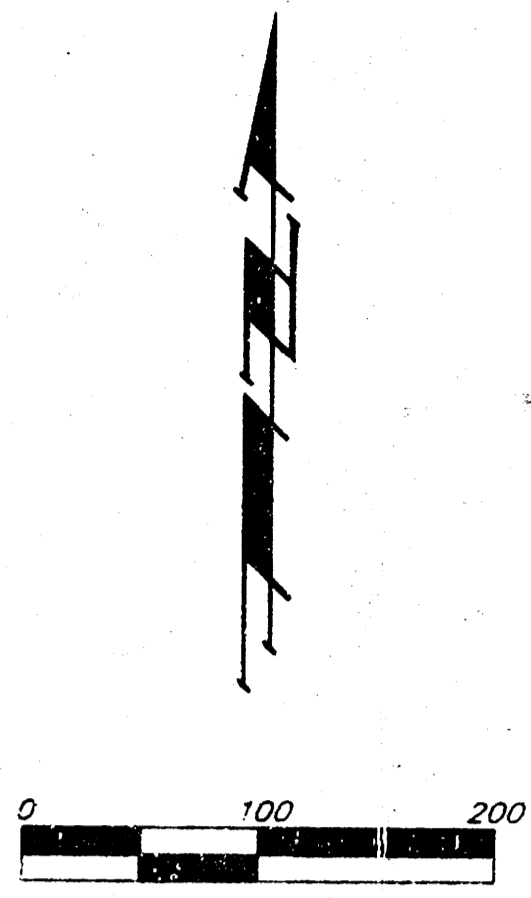


# DRAINAGE PLAN

## AUBURN HILLS 5TH ADDITION

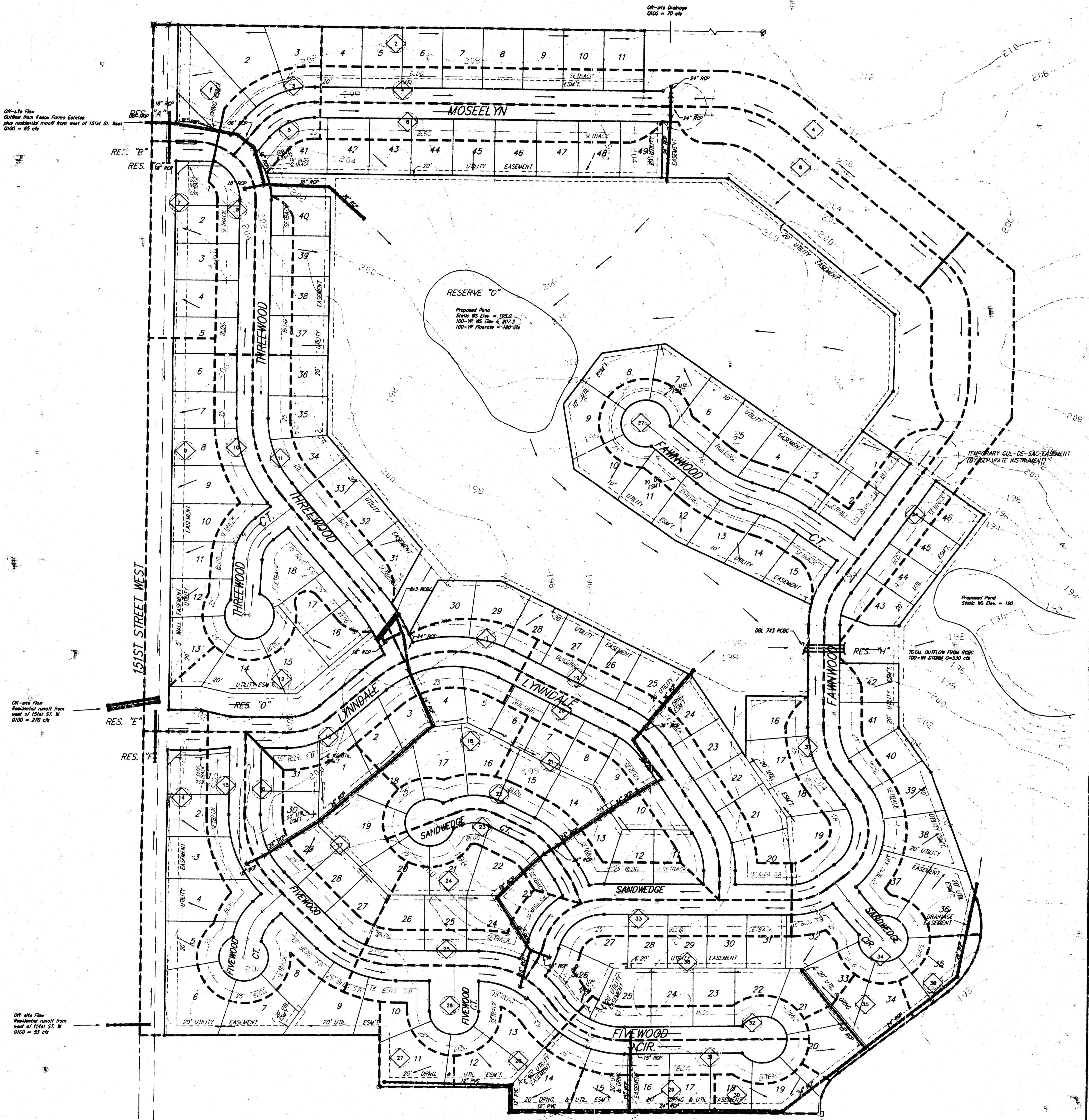
WICHITA, SEDGWICK COUNTY, KANSAS



MINIMUM BUILDING PAD ELEVATION FOR LOWEST OPENING TO THE STRUCTURES			
LOT	BLOCK	CITY DATUM	MCL
8-17	2	208.5	1,396.9
22-31	2	208.5	1,396.9
42 & 43	4	206.5	1,393.9

Drainage Area	Area (acres)	C <sub>1</sub>	C <sub>2</sub>	T <sub>1</sub> (hr)	T <sub>2</sub> (hr)	I <sub>1</sub> (in/hr)	I <sub>2</sub> (in/hr)	Q <sub>1</sub> (cfs)	Q <sub>2</sub> (cfs)
1	1.2	0.45	0.45	15	3.83	7.36	2.2	4.3	
2	1.2	0.45	0.45	15	3.83	7.36	2.1	4.0	
3	0.4	0.54	0.54	15	3.83	7.36	0.8	1.6	
4	2.5	0.54	0.54	15	3.83	7.36	5.2	10.0	
5	0.8	0.54	0.54	15	3.83	7.36	1.9	3.6	
6	2.5	0.54	15	3.83	7.36	4.8	9.1		
7	1.2	0.45	0.45	15	3.83	7.36	2.1	4.0	
8	0.8	0.54	0.54	15	3.83	7.36	1.7	3.2	
9	2.5	0.45	0.45	15	3.83	7.36	4.7	8.3	
10	2.3	0.54	0.54	15	3.83	7.36	4.8	9.2	
11	1.5	0.54	0.54	15	3.83	7.36	3.1	6.0	
12	1.3	0.54	0.54	15	3.83	7.36	2.7	5.2	
13	1.0	0.54	0.54	15	3.83	7.36	2.1	4.0	
14	2.8	0.45	0.45	15	3.83	7.36	4.8	9.3	
15	1.7	0.54	0.54	15	3.83	7.36	3.5	6.8	
16	0.9	0.54	0.54	15	3.83	7.36	1.9	3.6	
17	1.4	0.50	0.5	15	3.83	7.36	2.7	5.2	
18	1.1	0.50	0.50	15	3.83	7.36	2.1	4.0	
19	1.4	0.54	0.54	15	3.83	7.36	2.8	5.6	
20	1.1	0.54	0.54	15	3.83	7.36	2.3	4.4	

21	1.2	0.54	0.54	15	3.83	7.36	2.5	4.8	
22	1.3	0.54	0.54	15	3.83	7.36	2.7	5.2	
23	0.7	0.54	0.54	15	3.83	7.36	1.4	2.8	
24	0.9	0.45	0.45	15	3.83	7.36	1.6	3.0	
25	0.8	0.54	0.54	15	3.83	7.36	1.7	3.2	
26	1.2	0.54	0.54	15	3.83	7.36	2.5	4.8	
27	0.4	0.4	0.4	15	3.83	7.36	0.6	1.2	
28	0.7	0.4	0.4	15	3.83	7.36	1.1	2.1	
29	0.5	0.4	0.4	15	3.83	7.36	0.8	1.5	
30	0.4	0.4	0.4	15	3.83	7.36	0.6	1.2	
31	0.9	0.54	0.54	15	3.83	7.36	1.9	3.6	
32	0.8	0.54	0.54	15	3.83	7.36	1.7	3.2	
33	0.9	0.54	0.54	15	3.83	7.36	1.8	3.6	
34	4.1	0.54	0.54	15	3.83	7.36	8.5	16.3	
35	0.6	0.4	0.4	15	3.83	7.36	0.9	1.8	
36	0.3	0.4	0.4	15	3.83	7.36	0.5	0.9	
37	4.1	0.54	0.54	15	3.83	7.36	8.5	16.3	
38	1.8	0.4	0.4	15	3.83	7.36	2.8	5.3	



US HIGHWAY 54  
CONDEMNATION CASE NO. A-38302

24 Nov 1997  
**BAUGHMAN COMPANY P.A.**  
ENGINEERING, SURVEYING, & PLANNING  
F:\WORK\AUBURN\AUBURN.DWG-84