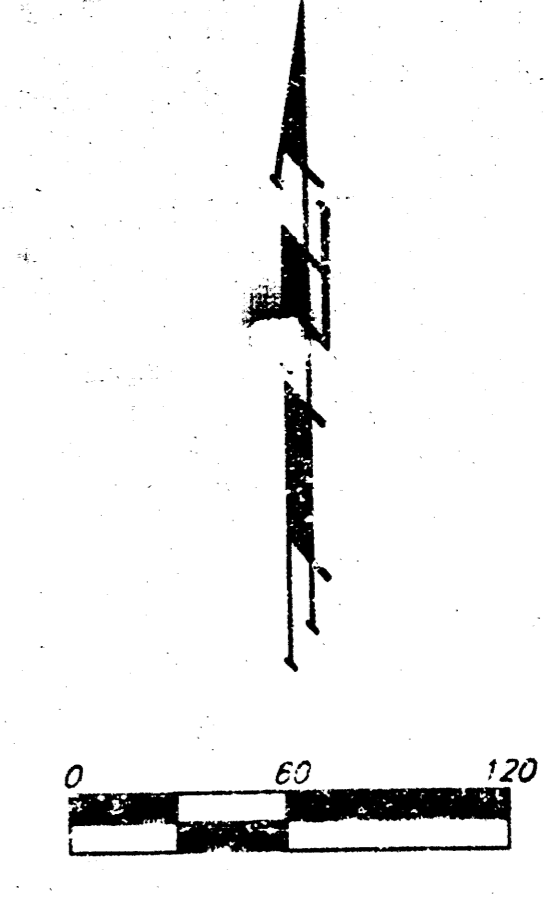
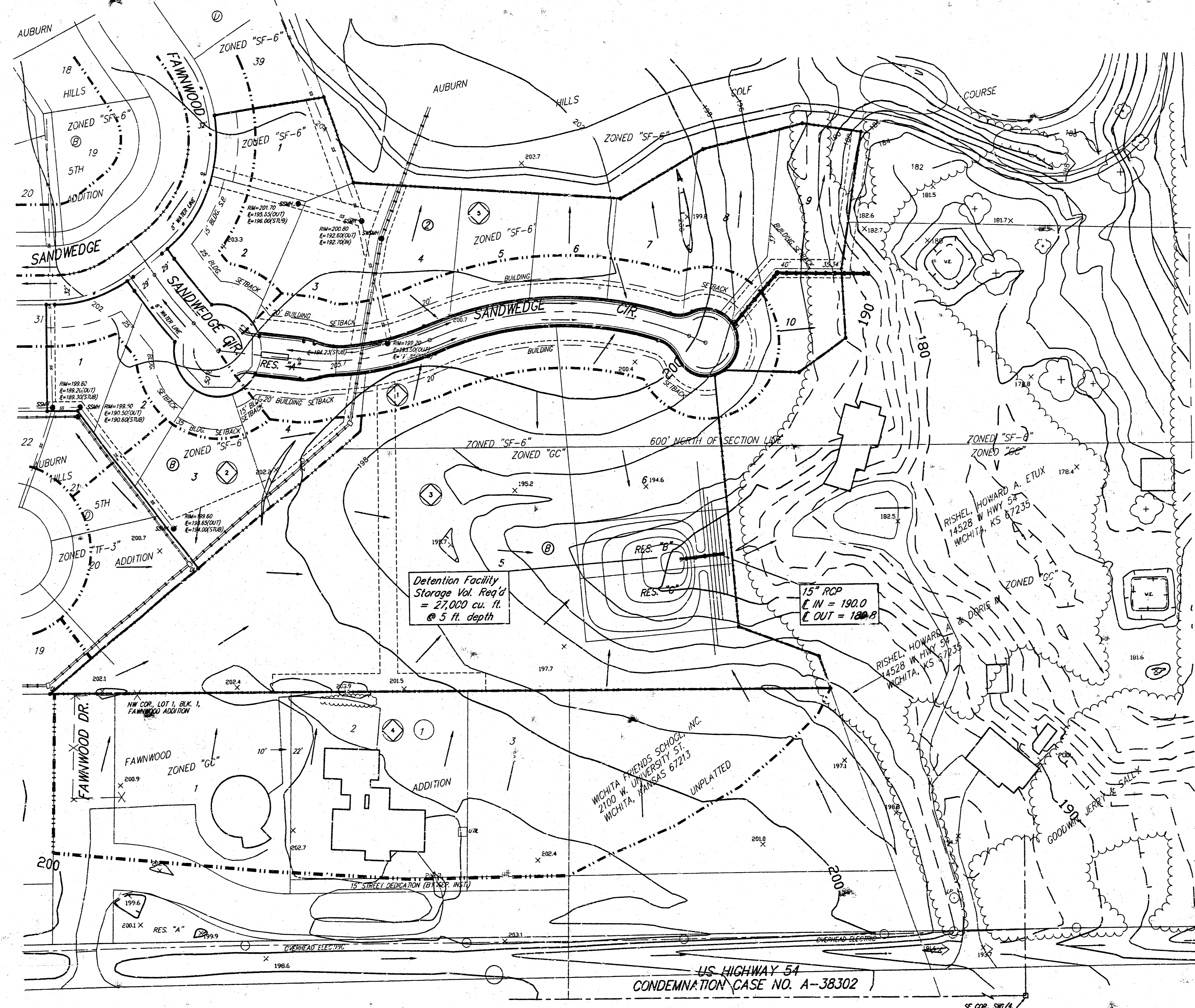


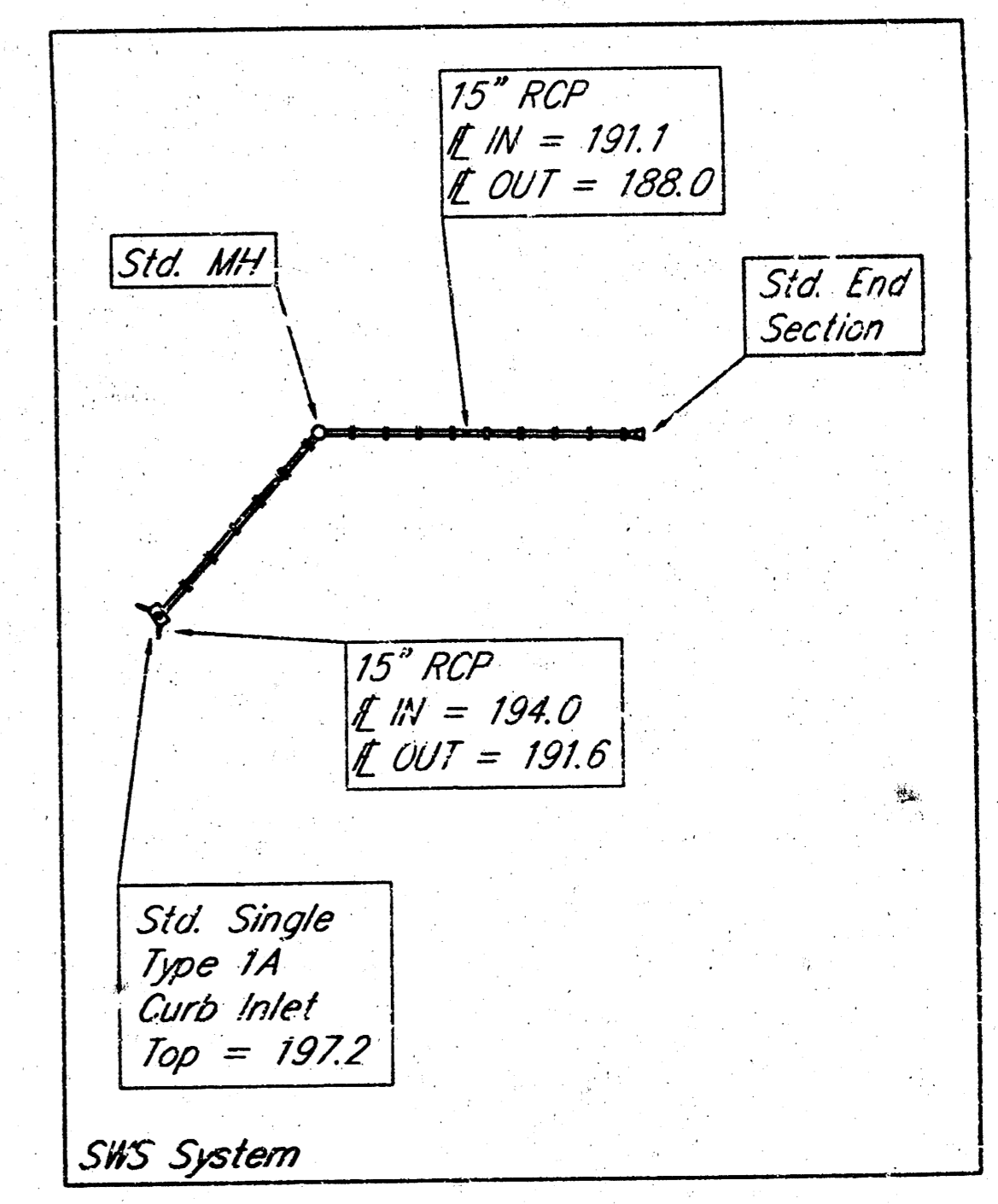
DRAINAGE PLAN AUBURN HILLS 11TH ADDITION WICHITA, SEDGWICK COUNTY, KANSAS



- ▽ = Latch Basin
- = Drop Inlet
- FM = Fire Hydrant
- LP = Light Pole
- PP = Power Pole
- Sign = Sign
- SSMH = Sanitary Sewer Manhole
- SSSM = Stormwater Sewer Manhole
- WV = Water Valve
- = #4 REBAR W/ "BAUGHMAN" CAP (SET)
- = SECTION CORNER FOUND

LOT	BLOCK	ELEVATION CITY DATUM
1-10	A	190.8

BENCHMARK:
TOP OF 1" IRON, 12" DEEP, W/4 COR., SEC. 26, T1P
27-S, R-2-W ELEV = 1396.53 M.S.L. (2003 CITY DATUM)



Hydrologic Data:
"C" coefficients based on
Hydrologic soil type C

Drainage Area (Acres)	C ₁	C ₂	C ₃	T ₁ (hr)	T ₂ (hr)	T ₃ (hr)	Q ₁ (cfs)	Q ₂ (cfs)	Q ₃ (cfs)
1	1.8	0.48	0.68	15	3.83	7.37	3.3	9.0	
2	0.9	0.48	0.68	15	3.83	7.37	1.6	4.5	
3	4.4	0.68	0.83	15	3.83	7.37	11	27	
4	3.5	0.83	0.83	15	3.83	7.37	9.1	21	
5	2.1	0.48	0.68	15	3.83	7.37	3.9	11	

US HIGHWAY 54
CONDEMNATION CASE NO. A-38302