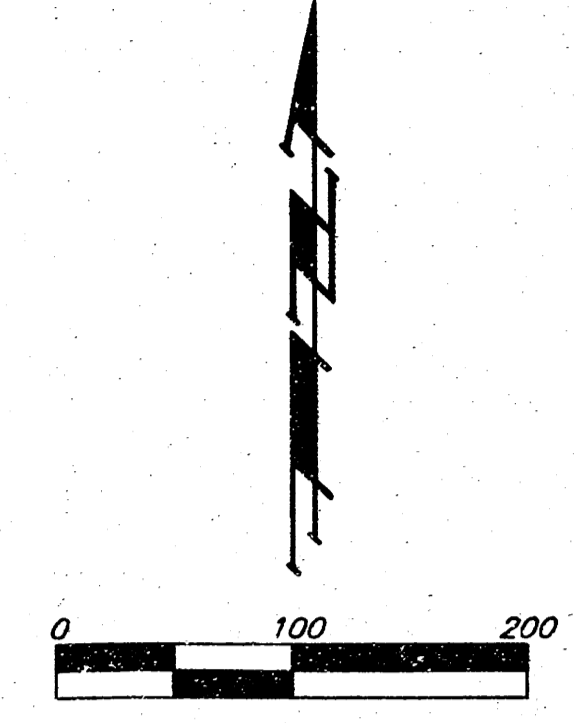


# DRAINAGE PLAN

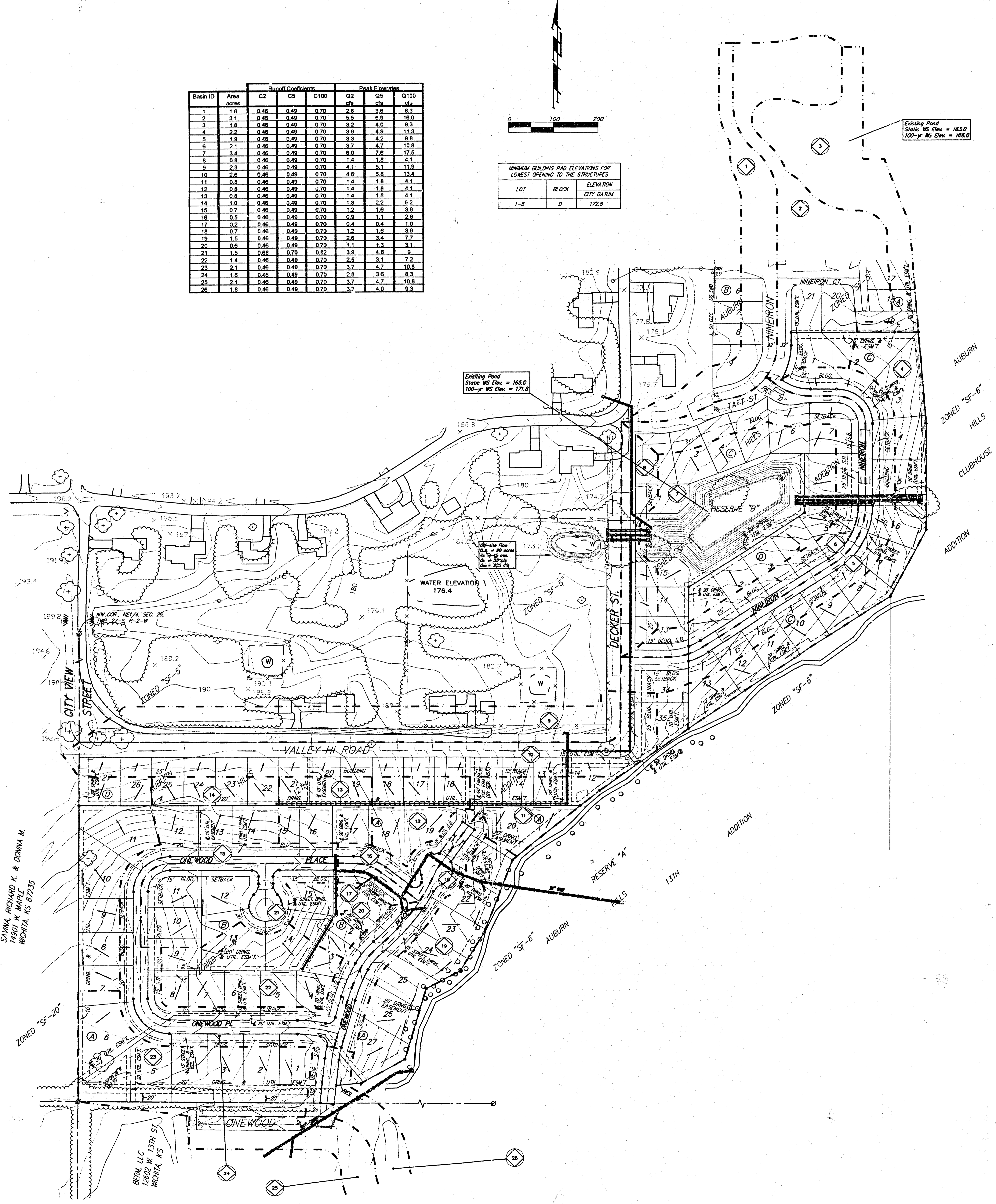
## AUBURN HILLS 14TH ADDITION

WICHITA, SEDGWICK COUNTY, KANSAS

Basin ID	Area acres	Runoff Coefficients			Peak Flowrates		
		C2	C5	C100	Q2 cfs	Q5 cfs	Q100 cfs
1	1.8	0.46	0.49	0.70	2.8	3.8	8.3
2	3.1	0.46	0.49	0.70	5.5	6.9	16.0
3	1.8	0.46	0.49	0.70	3.2	4.0	9.3
4	2.2	0.46	0.49	0.70	3.8	4.9	11.3
5	1.9	0.46	0.49	0.70	3.3	4.2	9.8
6	2.1	0.46	0.49	0.70	3.7	4.7	10.8
7	3.4	0.46	0.49	0.70	6.0	7.6	17.5
8	0.8	0.46	0.49	0.70	1.4	1.8	4.1
9	2.3	0.46	0.49	0.70	4.1	5.1	11.9
10	2.6	0.46	0.49	0.70	4.6	5.8	13.4
11	0.8	0.46	0.49	0.70	1.4	1.8	4.1
12	0.8	0.46	0.49	0.70	1.4	1.8	4.1
13	0.8	0.46	0.49	0.70	1.4	1.8	4.1
14	1.0	0.46	0.49	0.70	1.8	2.2	5.2
15	0.7	0.46	0.49	0.70	1.2	1.6	3.6
16	0.5	0.46	0.49	0.70	0.9	1.1	2.6
17	0.2	0.46	0.49	0.70	0.4	0.4	1.0
18	0.7	0.46	0.49	0.70	1.2	1.6	3.6
19	1.5	0.46	0.49	0.70	2.6	3.4	7.7
20	0.6	0.46	0.49	0.70	1.1	1.3	3.1
21	1.5	0.46	0.49	0.70	3.8	4.8	9
22	1.4	0.46	0.49	0.70	2.5	3.1	7.2
23	2.1	0.46	0.49	0.70	3.7	4.7	10.8
24	1.6	0.46	0.49	0.70	2.8	3.6	8.3
25	2.1	0.46	0.49	0.70	3.7	4.7	10.8
26	1.8	0.46	0.49	0.70	3.7	4.0	9.3



MINIMUM BUILDING PAD ELEVATIONS FOR LOWEST OPENING TO THE STRUCTURES		
LOT	BLOCK	ELEVATION CITY DATUM
1-5	D	172.8



SAYMA, RICHARD K. & DONNA M.  
1401 N. MAPLE  
WICHITA, KS 67215

BERM, LLC  
12602 W. 13TH ST.  
WICHITA, KS

This plot is a re-plot of the Auburn Hills 12th Addition. The primary infrastructure has already been constructed. This includes the streets, stormwater sewers, sanitary sewers, and mass grading of the site. No alterations are proposed at this time. Please refer to the Auburn Hills 12th Addition Drainage Plan for detailed calculations of the drainage systems.  
Stormwater Sewers were built according to:  
City of Wichita, Project Number 468-83180, Stormwater Sewer #544  
& City of Wichita, Project Number 468-83181, Stormwater Sewer #545

25 MARCH 2001

**BAUGHMAN COMPANY P. A.**  
ENGINEERING, SURVEYING & PLANNING  
316-262-7271 • 316-262-7272 • WICHITA, KANSAS 67211