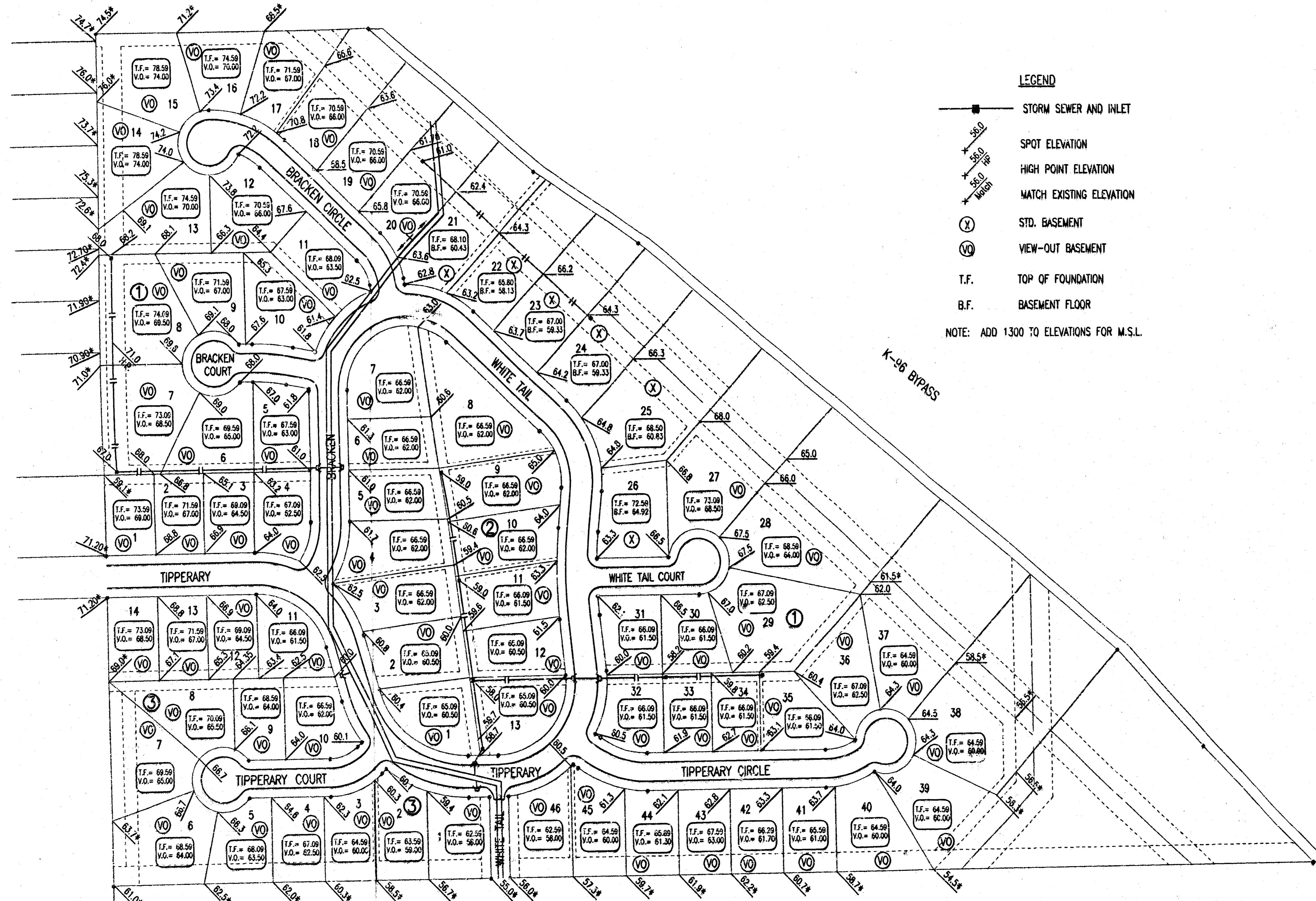


FOUR-CORNER PLAN/MASTER DRAINAGE PLAN  
**BALTHROP 4TH ADDITION**  
 TO WICHITA, SEDGWICK COUNTY, KANSAS



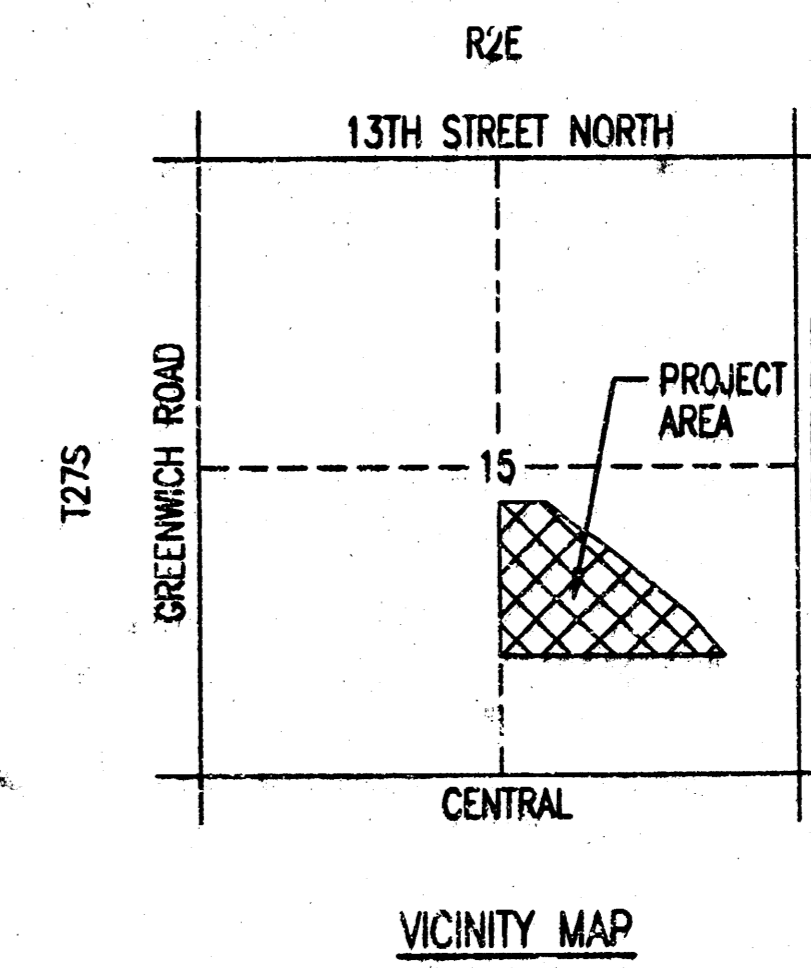
**LEGEND**

- STORM SEWER AND INLET
  - X— SPOT ELEVATION
  - X— HIGH POINT ELEVATION
  - X— MATCH EXISTING ELEVATION
  - ⊗ STD. BASEMENT
  - ⊙ VIEW-OUT BASEMENT
  - T.F. TOP OF FOUNDATION
  - B.F. BASEMENT FLOOR
- NOTE: ADD 1300 TO ELEVATIONS FOR M.S.L.

SCALE: 1"=100'

● = IRON SET UNLESS OTHERWISE NOTED

B.M. - CHISELED "C" IN CENTER CONCRETE HEADWALL  
 TO R.C.B. 24.5' SOUTH AND 36.7' WEST OF THE  
 INTERSECTION OF THE CENTERLINES OF CENTRAL  
 AND GREENWICH. ELEV. = 1376.228 N.G.V.D.



**APPROVED  
 DRAINAGE PLAN**

S.W. Corner S.E. 1/4  
 Sec. 15, T27S, R2E  
 of the 6th P.M.  
 § CENTRAL  
 SECTION LINE

§ CENTRAL  
 SECTION LINE

S.E. Corner, S.E. 1/4,  
 Sec. 15, T27S, R2E  
 of the 6th P.M.

**BALTHROP 4TH**