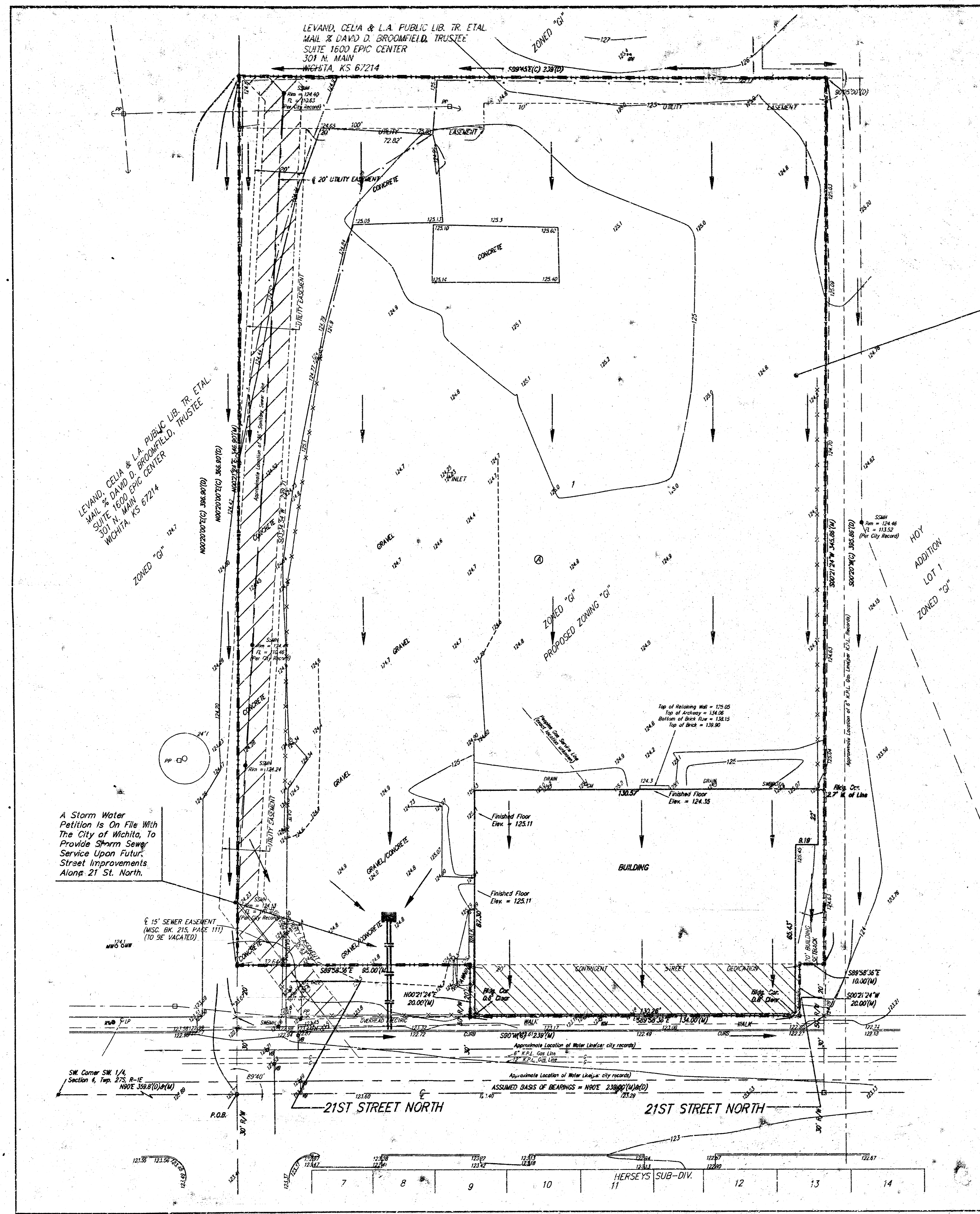


# DRAINAGE PLAN

## BEST SUPPLY ADDITION

### WICHITA, SEDGWICK COUNTY, KANSAS

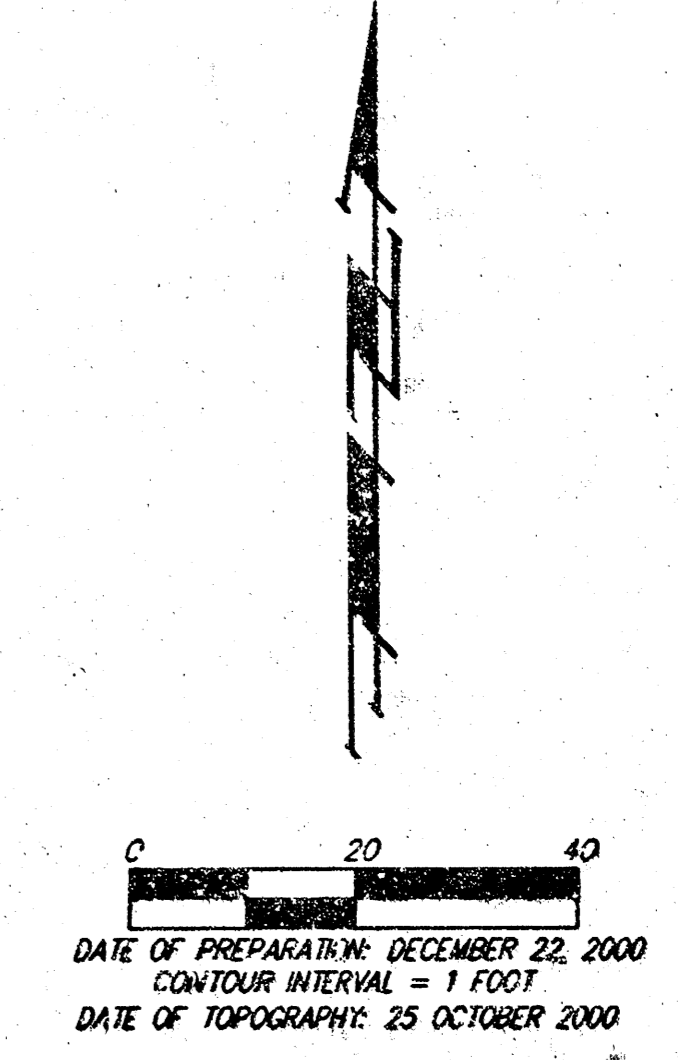


D.A. = 2.0 ac.  
 TC = 15 min  
 $C_{max} = .85/.91$   
 $Q_s = 7.8$  cfs  
 $Q_{max} = 1.3$  cfs

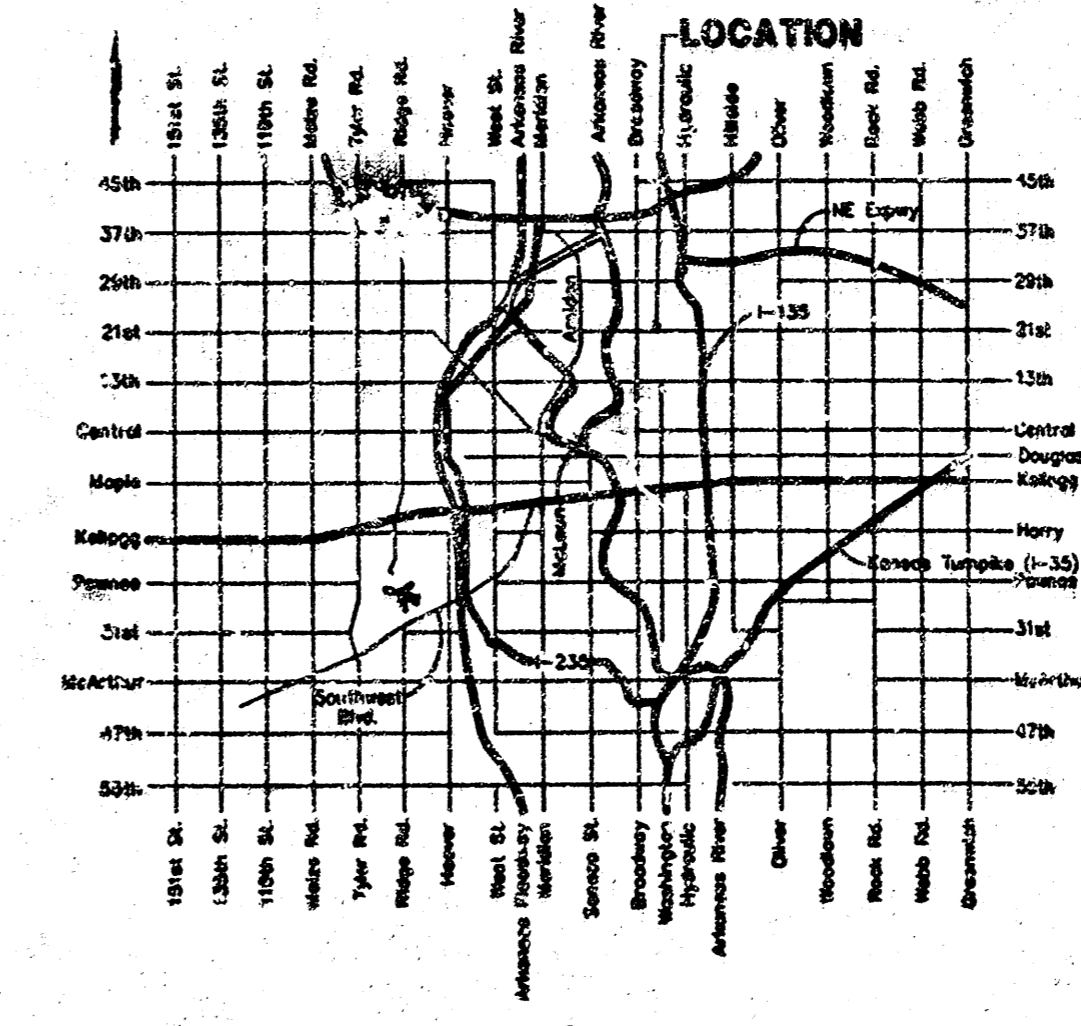
**OWNER:**  
 Paul Suhr  
 Best Supply Company, Inc.  
 414 E. 21st Street  
 Wichita, Kansas 67214

**LEGAL DESCRIPTION:**  
 A tract in the S. 1/2 of the SW 1/4 of the SW 1/4 of Sec. 4, Twp. 27-S, R-1-E, of the 6th P.M., Sedgwick County, Kansas, described as commencing at the SW Corner thereof; thence east along the south line of the S 1/2 of the SW 1/4 of said SW 1/4, 359.8 feet for a place of beginning; thence north with a deflection angle to the left of 89°40', 396.9 feet; thence east with a deflection angle to the right of 89°55', 239 feet; thence south with a deflection angle to the right of 90°05', 395.86 feet to a point on the south line of the S 1/2 of the SW 1/4 of said SW 1/4; thence west, 239 feet to the place of beginning.

**BENCHMARK:**  
 Brass rod in Conc. post at N. end of traffic island 22' E. and 41.5' N. of thimble at Sec. Corner.  
 ELEV = 124.71(City Datum)



- EB = Electric Box
- EM = Electric Meter
- GM = Gas Meter
- GU = Guard Post(Bollard)
- GA = Guy Anchor
- HLF = High Line Pole
- LP = Light Pole
- MB = Mail Box
- SW = Monitoring Well
- PP = Power Pole
- Sign = Sign
- SWMBH = Southwestern Bell Manhole
- SWBP = Southwestern Bell Pocket
- WM = Water Meter
- WV = Water Valve
- #4 = #4 REBAR W/ "BAUGHMAN" CAP (SET)
- CS = Concrete Wall Set
- HN = High Nail Set
- CF = Chiseled Cross Found
- CV = Chiseled V-Notch
- IP = 1/2" Iron Pipe in Thimble Found
- (M) = Measured
- (D) = Described
- (C) = Calculated



- DRAINAGE NOTE:**
- The Existing Soil Type per Soil Survey of Sedgwick County, Kansas is Urban Land-Elandco Complex is a Hydrologic Group B.
  - This Parcel of Land is Located in A FEMA Flood Hazard Zone B Per FIRM Map. (Community/ Panel Number; 200328 001CB) Effective Date: May 15, 1986.

A Storm Water Petition is On File With The City of Wichita, To Provide Storm Sewer Service Upon Future Street Improvements Along 21 St. North.

6" 15' SEWER EASEMENT (MISC. BK. 215, PAGE 117) (TO BE VACATED)

SW Corner SW 1/4 Section 4, Twp. 27-S, R-1-E, Note 358.8'(D)(M)

ASSUMED BASIS OF BEARINGS = NOTE 239.00'(M)(D)