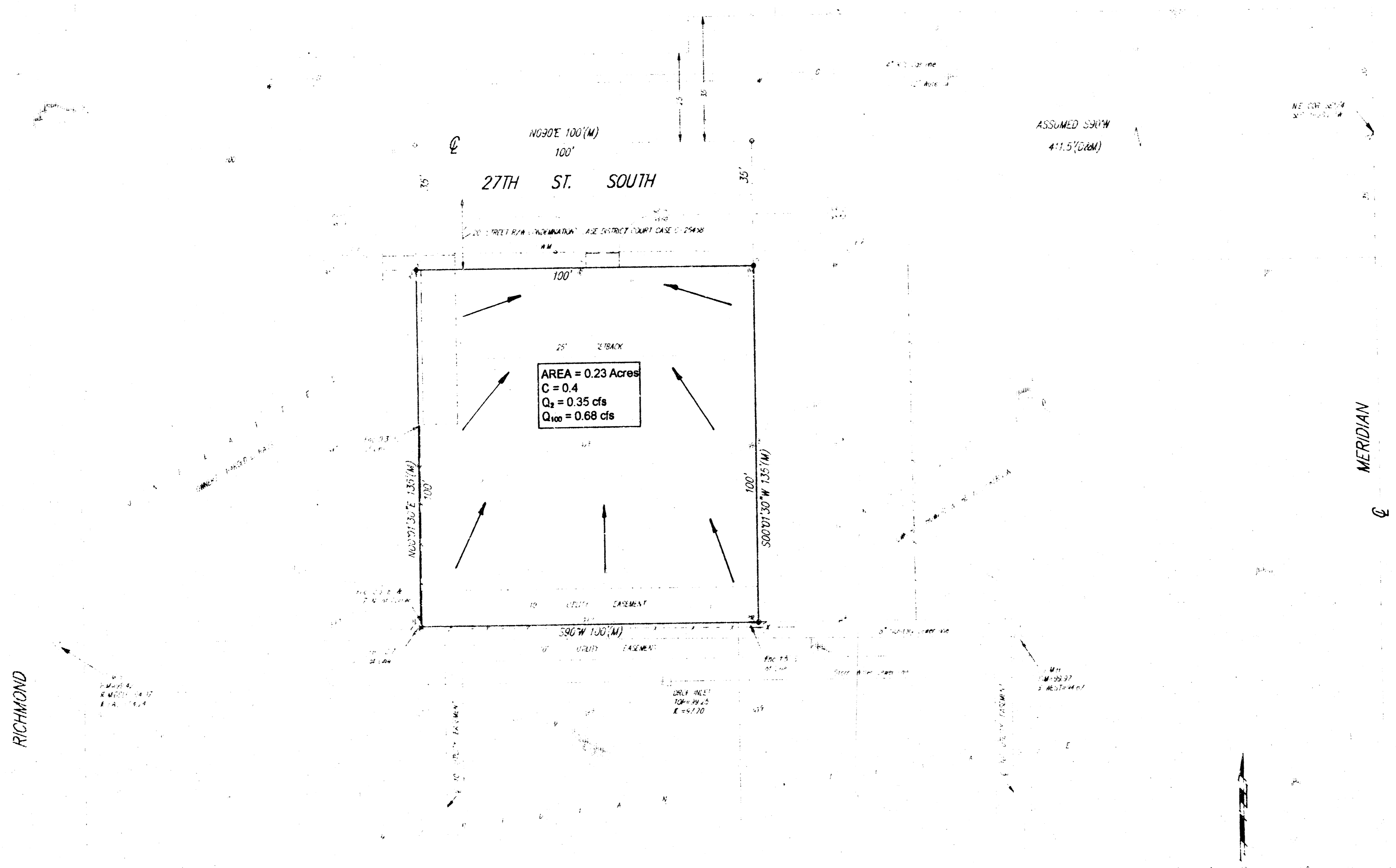


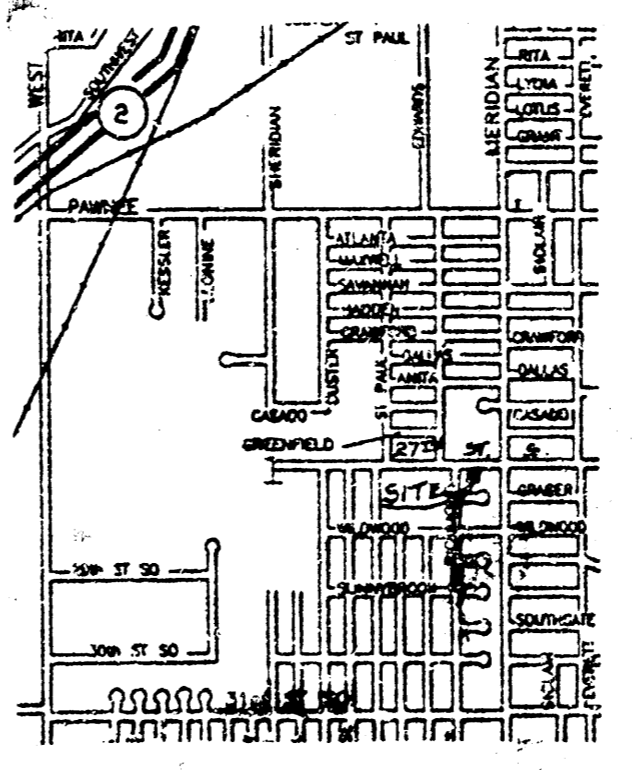
DRAINAGE PLAN 4-26-94



SKETCH PLAT

RICHARD BISHOP ADDITION

WICHITA, SEDGWICK COUNTY, KANSAS



LEGAL DESCRIPTION
 A tract of land bounded as follows: beginning at a point 41.5 feet west of the N.E. corner of the S21/4 of Sec. 1, Twp. 28S, R-1-W, of the 6th P.M., Sedgwick County, Kansas, thence south 155 feet, thence west 100 feet, thence north 135 feet, thence east 100 feet to the point of beginning.

DRAWN BY: F. Dana Bishop
 4/20/94
 Wichita, KS 67216