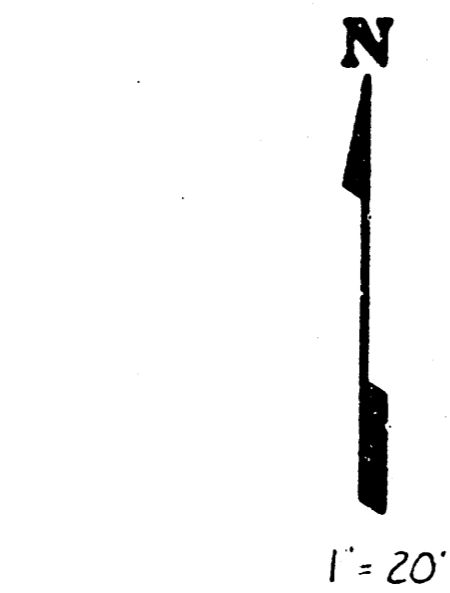
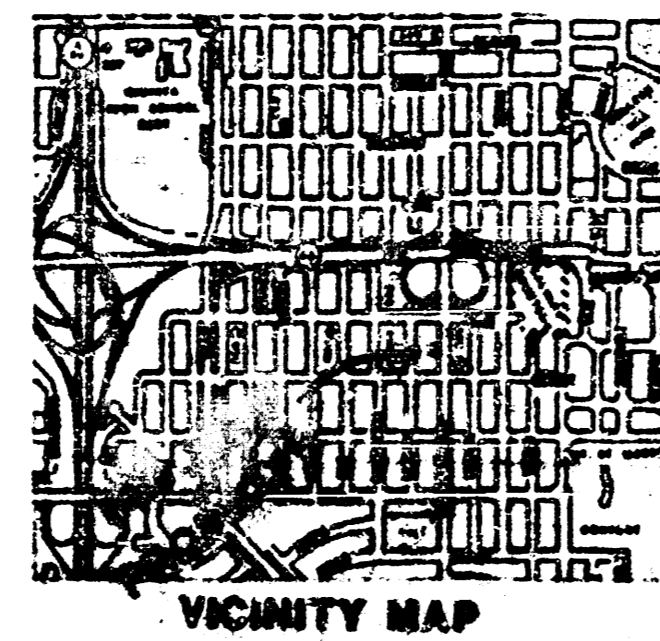


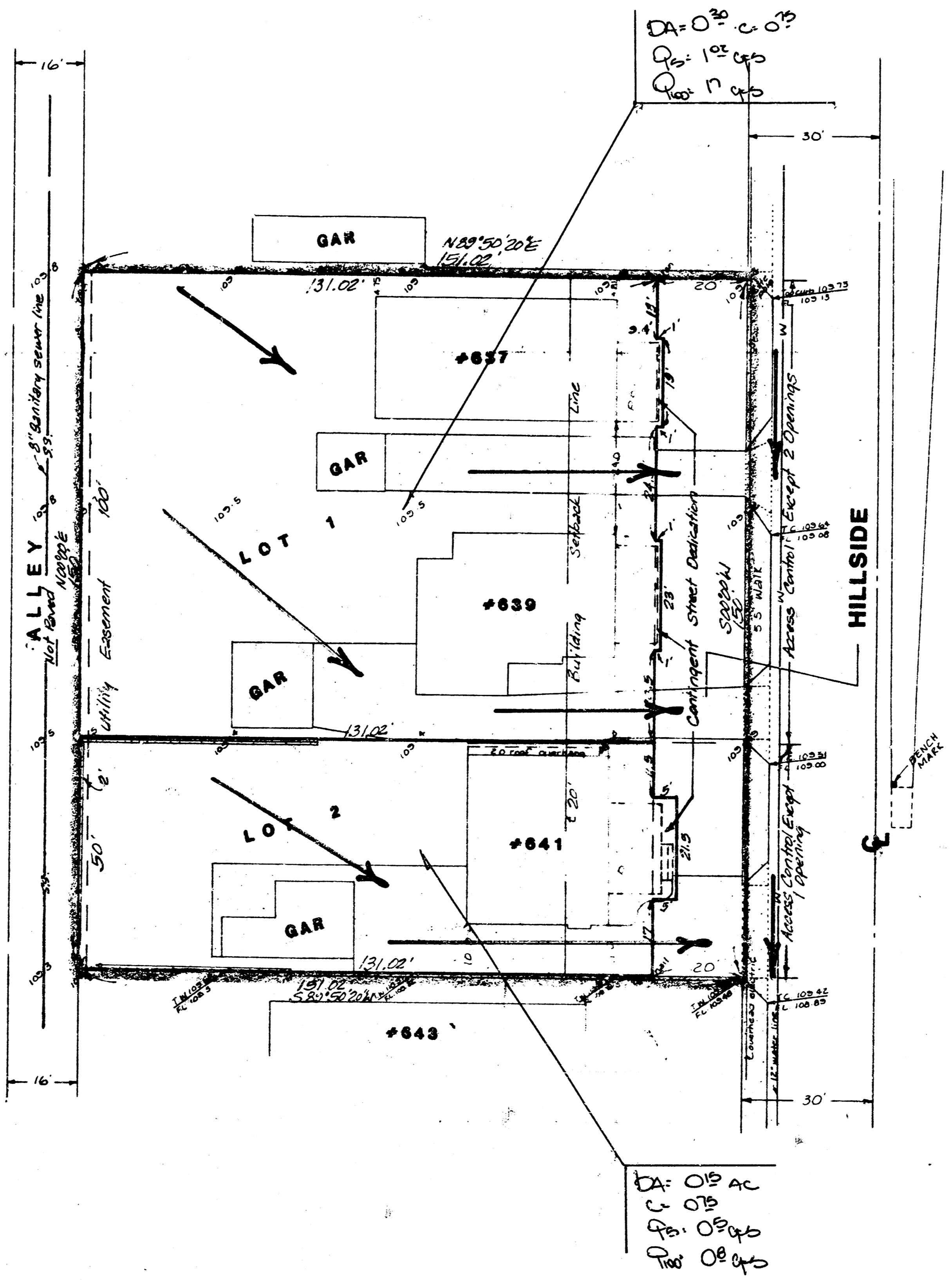
Blasi Add'n



Bench Mark:
0' cut on top of West curb on
south end of island on Hillside
431 feet south of E of Orange.
Elev. = 110.02 City Datum.



VICINITY MAP



SKETCH PLAT
BLASI ADDITION

LOTS 73, 75, 77, 79, 81, AND 83, BLOCK 8,
SUNNY-SIDE ADDITION TO THE CITY OF
WICHITA, KANSAS.

OWNERS:
B. LINUS AND ADAURE C. OHAEBOSIM
ORIE, JIM, AND BILL OWENS
DONALD T. AND EILEEN M. BLASI

DA: 015 AC
C: 015
P: 015
F: 015

Drainage plan —

FILMED FROM THE BEST AVAILABLE COPY