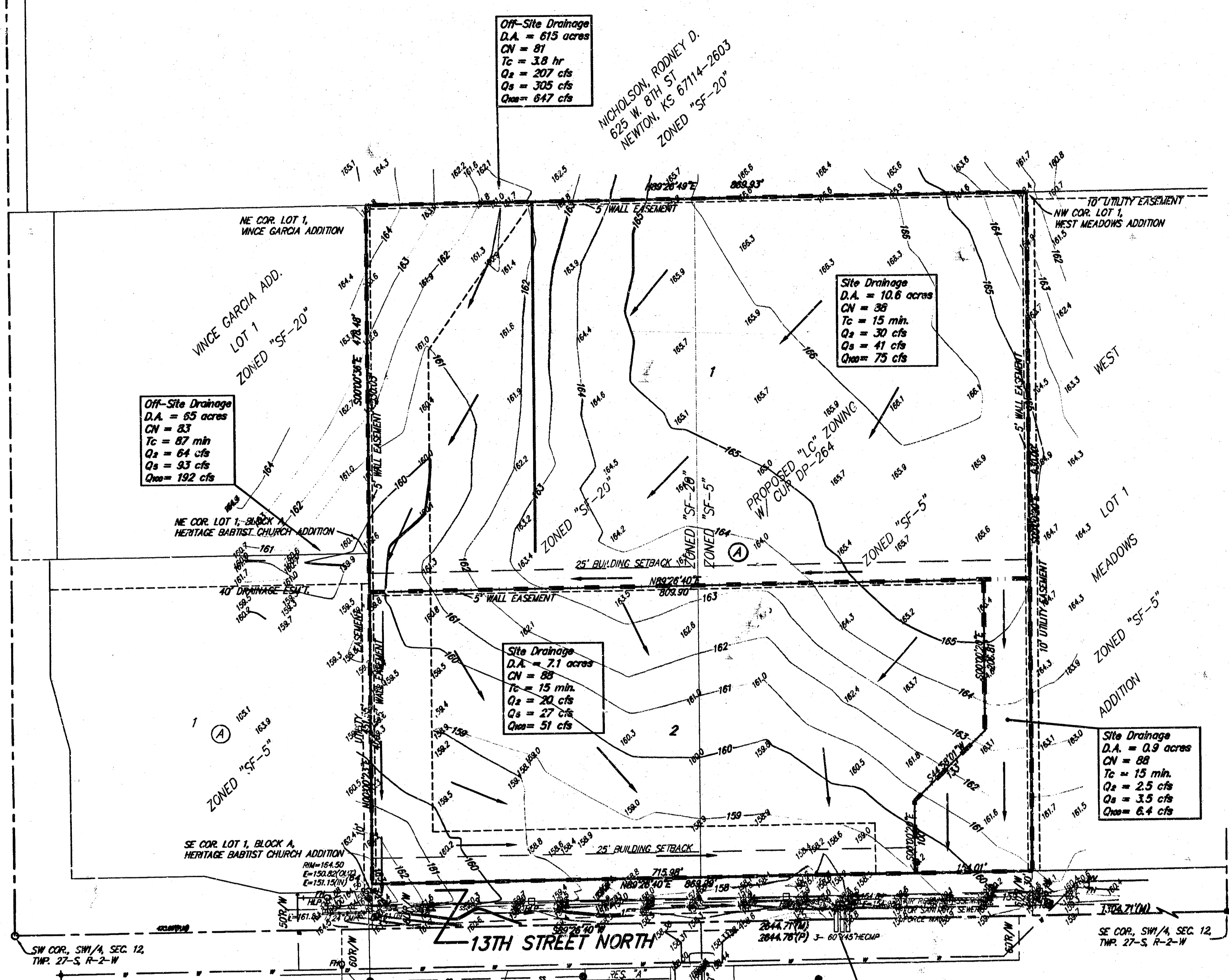


DRAINAGE PLAN BLATTNER ADDITION WICHITA, SEDGWICK COUNTY, KANSAS



Off-Site Drainage
 D.A. = 615 acres
 CN = 81
 Tc = 3.8 hr
 Qs = 207 cfs
 Qm = 305 cfs
 Qom = 647 cfs

NICHOLSON, RODNEY D.
 625 W 8TH ST
 NEPTON, KS 67114-2603
 ZONED "SF-20"

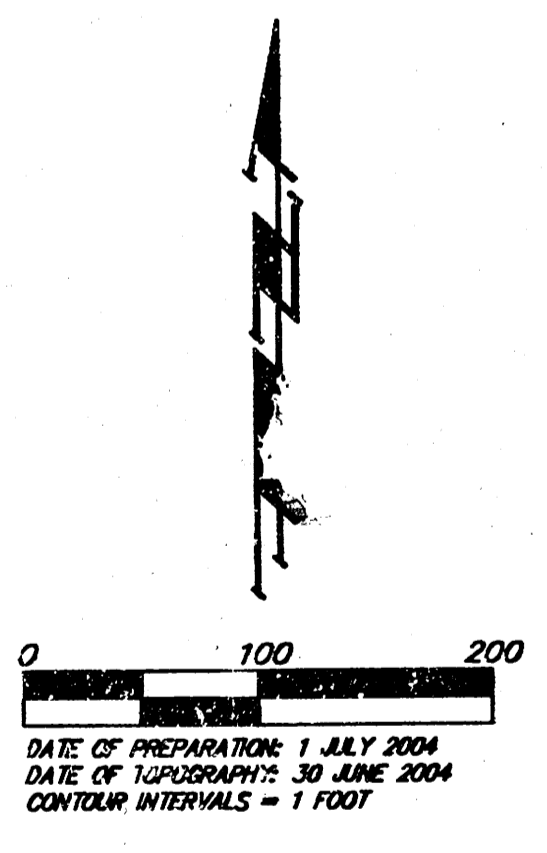
Off-Site Drainage
 D.A. = 63 acres
 CN = 83
 Tc = 87 min
 Qs = 64 cfs
 Qm = 93 cfs
 Qom = 192 cfs

Site Drainage
 D.A. = 10.6 acres
 CN = 38
 Tc = 15 min
 Qs = 30 cfs
 Qm = 41 cfs
 Qom = 75 cfs

Site Drainage
 D.A. = 7.1 acres
 CN = 88
 Tc = 15 min
 Qs = 20 cfs
 Qm = 27 cfs
 Qom = 51 cfs

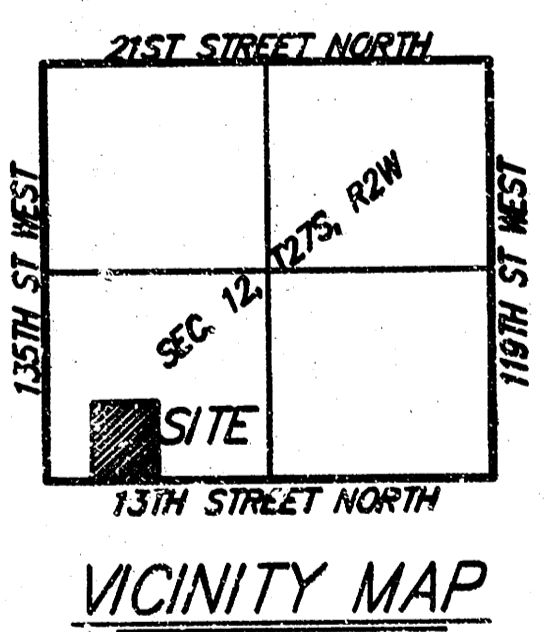
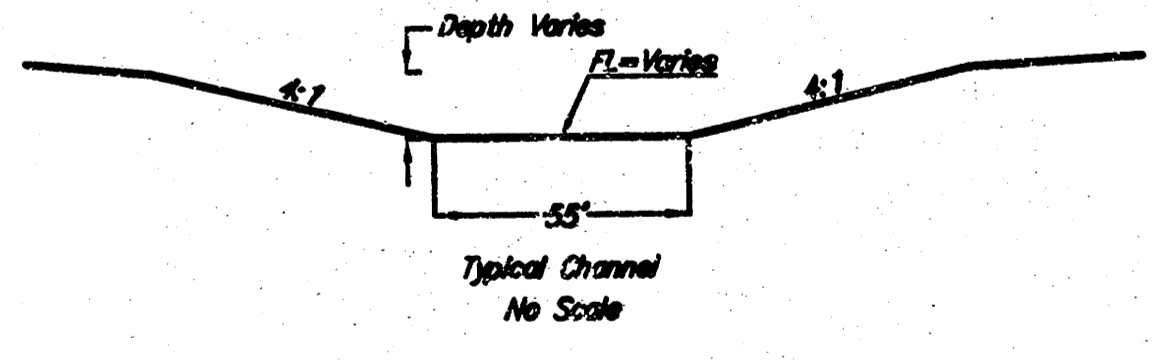
Site Drainage
 D.A. = 0.9 acres
 CN = 88
 Tc = 15 min
 Qs = 2.5 cfs
 Qm = 3.5 cfs
 Qom = 6.4 cfs

Existing Conditions	Proposed Conditions
Qs = 235 cfs	Qs = 220 cfs
Qm = 347 cfs	Qm = 323 cfs
Qom = 738 cfs	Qom = 691 cfs



FH Co = Fire Hydrant
 HLP = High Line Pole
 SSM = Sanitary Sewer Marker
 SSM = Sanitary Sewer Manhole
 W = Water Valve

 BENCHMARK:
 13th St. W. & 13th St. N.
 City of Wichita Benchmark Disc
 SE corner of intersection
 56' East of centerline
 55' South of centerline
 Elev. = 167.83 City Datum
 1355.23 NGVD29



NOTE:
 ADDITIONAL BUILDING SETBACKS PER COMMUNITY UNIT
 PLAN DP-284.

NOTE:
 A master grading plan for drainage has been developed for this subdivision and is on file with the City of Wichita, Kansas. All drainage easements, right-of-ways, or reserves shall remain at established grades or as modified with the approval of the City Engineer of the City of Wichita, Kansas. No obstructions which impede the flow of this drainage system be allowed.

Note: Peak discharge rates were determined using the Hoisted Software program: Pond Pack. This software accounts for the time distribution of the hydrographs of the areas involved.

Revised 27 JULY 2004

Baughman Company, P.A.
 315 E 14th St., Wichita, KS 67211 F 316-262-7171 F 316-262-0149
 ENGINEERING | SURVEYING | PLANNING | LANDSCAPE ARCHITECTURE
E:\PLAT\BLATTNERADDITION\DWG\BLATTNER.DWG