

LETTER OF TRANSMITT

PROJECT: Bluestem Village Second
 Preliminary Plat
 PROJECT #: _____ DATE: 1/10/86
 TO: City Engineering
 Wichita, KS 67202

MID-KANSAS ENGINEERING
 CONSULTANTS, P.A.
 3500 N. Rock Road, #800
 Wichita, KS 67226

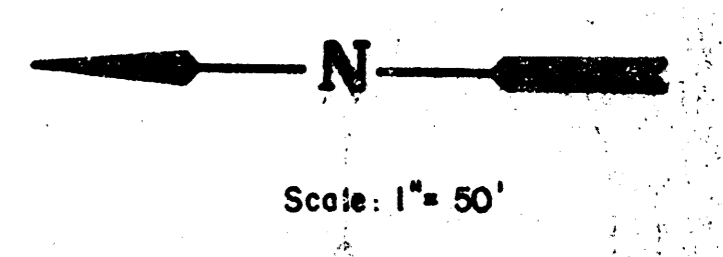
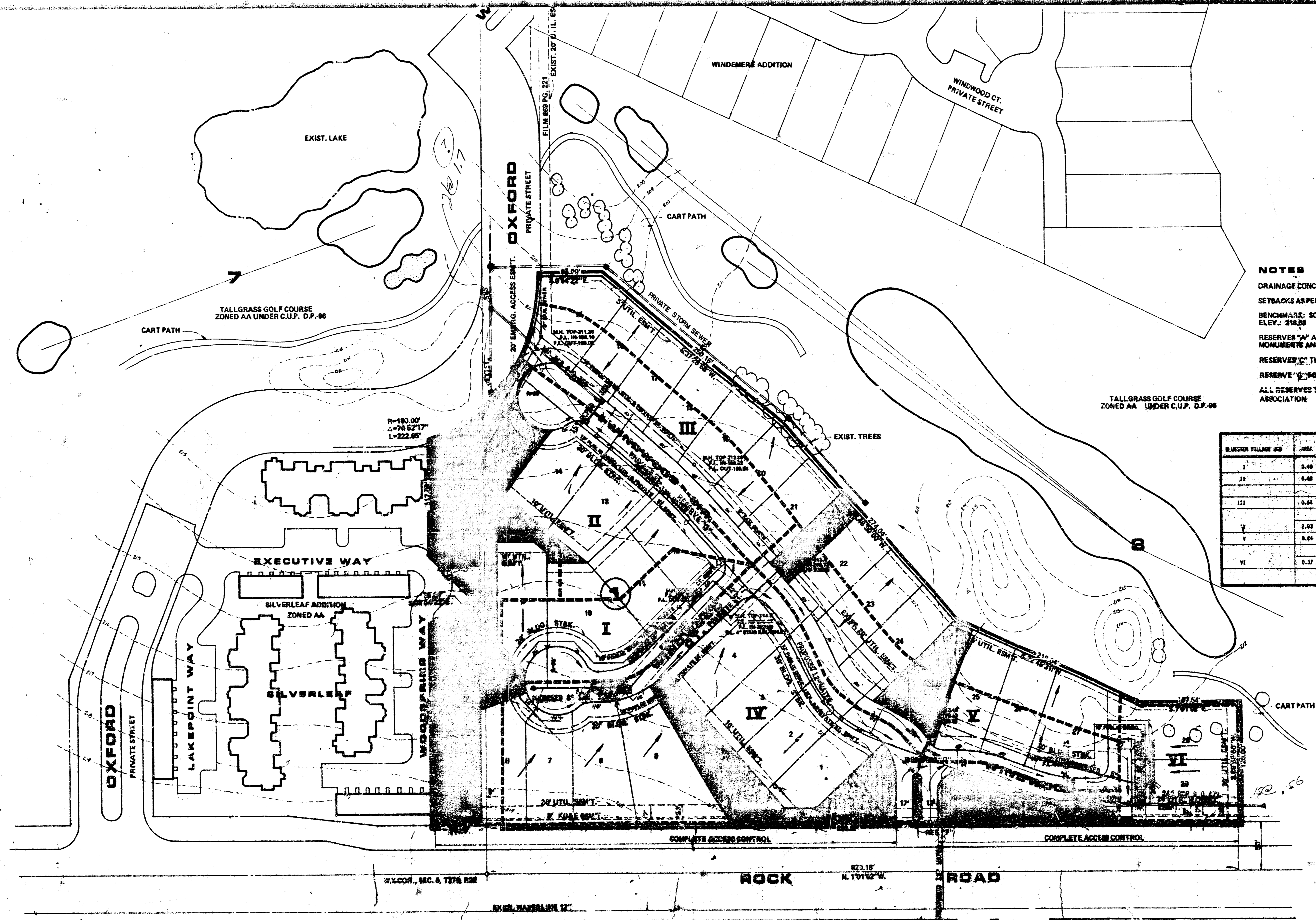
We are sending the following items: Attached
 Under separate cover previously on
 Prints Specifications Legal Descriptions
 Tracings Petitions Correspondence Other

COMMENTS: Drainage & Utility Concept plan for referenced project.

These are transmitted as checked below:
 For Your Approval As Requested
 For Your Use For Your Files
 Approved as Noted For Review and Comment

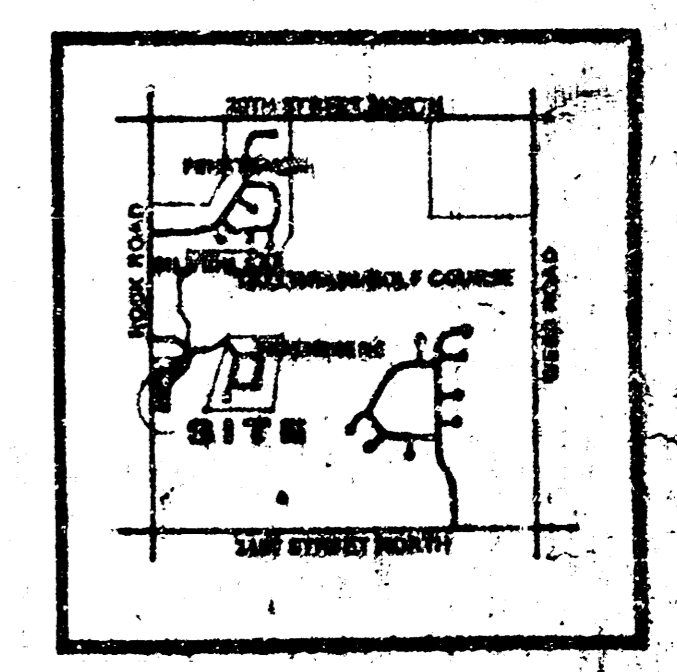
REMARKS:

Copies: _____
 Signed: *Kenneth H. Bengtson*
 Kenneth H. Bengtson, P.E.
 KHB:js



NOTES
 DRAINAGE CONCEPT PLAN TO BE SUBMITTED BY M.K.E.C. TO CITY ENGINEER.
 SETBACKS AS PER GENERAL PROVISION NO. 4 OF TALLGRASS C.U.P. (D.P. 96).
 BENCHMARK: SCORE MARK AT BASE OF "T" POLES 2" N. AND 0" E. OF 3" PEG. 60"
 ELEV.: 210.23
 RESERVE "A" AND "B" FOR UTILITIES, DRAINAGE, LANDSCAPING, ENTRY
 MONUMENTS AND WALLS.
 RESERVE "C" THRU "F" FOR UTILITIES, DRAINAGE AND LANDSCAPING.
 RESERVE "G" FOR PRIVATE STREET, DRAINAGE AND UTILITIES.
 ALL RESERVES TO BE OWNED AND MAINTAINED BY A HOMEOWNERS
 ASSOCIATION.

BLUESTEM VILLAGE 2ND	AREA	AREA	PERCENT	PERCENT	PERCENT	PERCENT	PERCENT	PERCENT
I	0.49	0.4	15	4.09	0.36	1.18	7.28	
II	0.68	0.4	15	4.09	2.69	1.64	2.56	
	1.17	0.8	33	4.75	6.38	2.82	9.84	
III	0.64	0.6	16	4.86	0.28	1.09	1.93	
	1.55	0.6	16	4.86	0.66	0.75	2.75	
V	2.03	0.8	25	3.03	0.83	0.48	0.73	
	0.84	0.8	25	3.03	0.83	1.03	1.88	
	2.07	0.8	25	3.03	0.83	0.83	1.03	
VI	0.17	0.4	15	4.56	0.88	0.39	1.02	
	0.28	0.4	15	4.56	1.03	0.41	0.94	





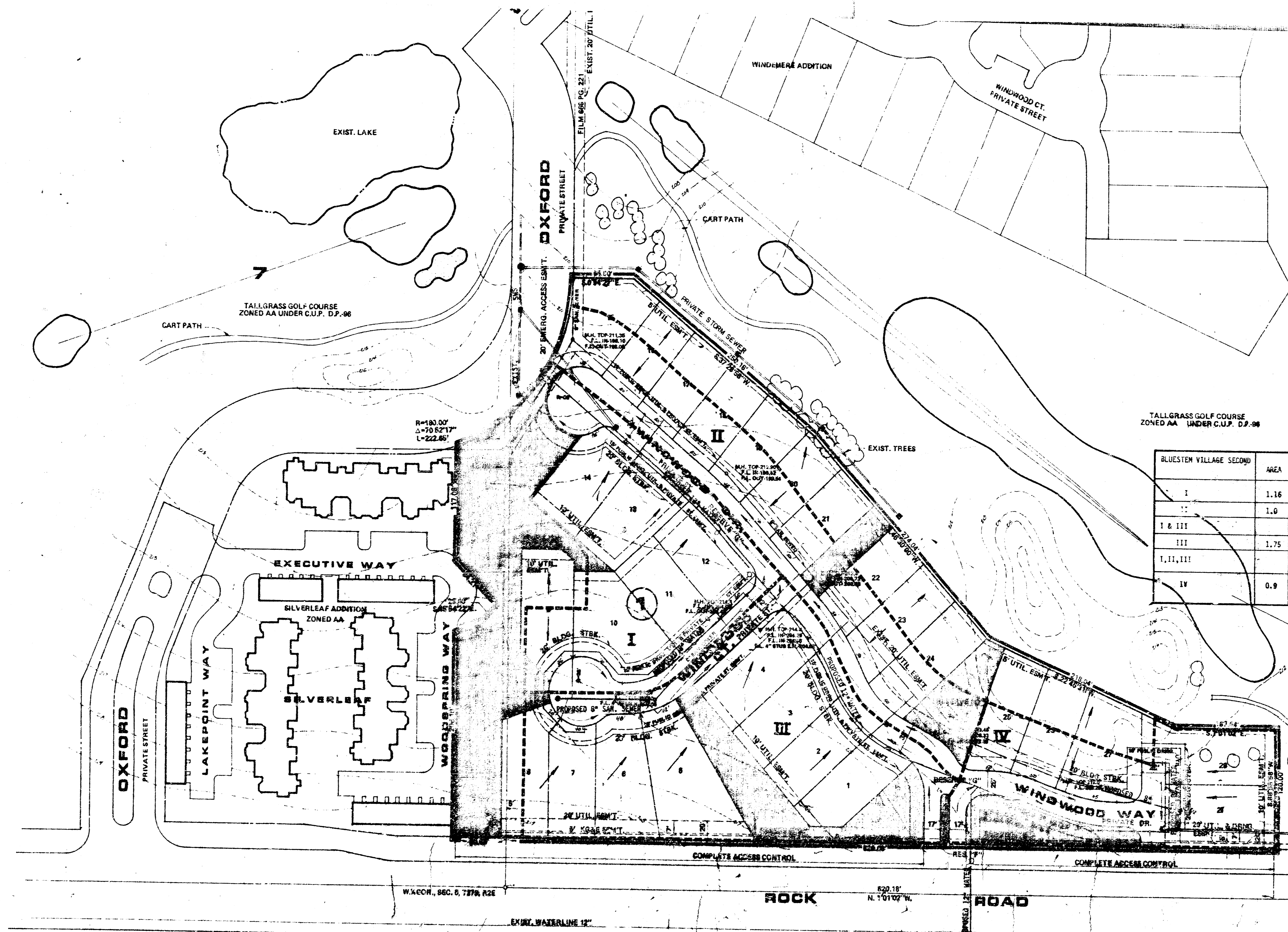
PROJECT: Bluestem Village Second Addition
 PRELIMINARY PLAN
 PROJECT #: _____ DATE: 1/16/06
 TO: City Engineering
 Wichita, KS 67202

MID-KANSAS ENGINEERING
 CONSULTANTS, P.A.
 3500 N. Rock Road, #800
 Wichita, KS 67226

We are sending the following items: Attached Under separate cover previously un-
 Prints Specifications Legal Descriptions
 Tracings Positions Correspondence Other

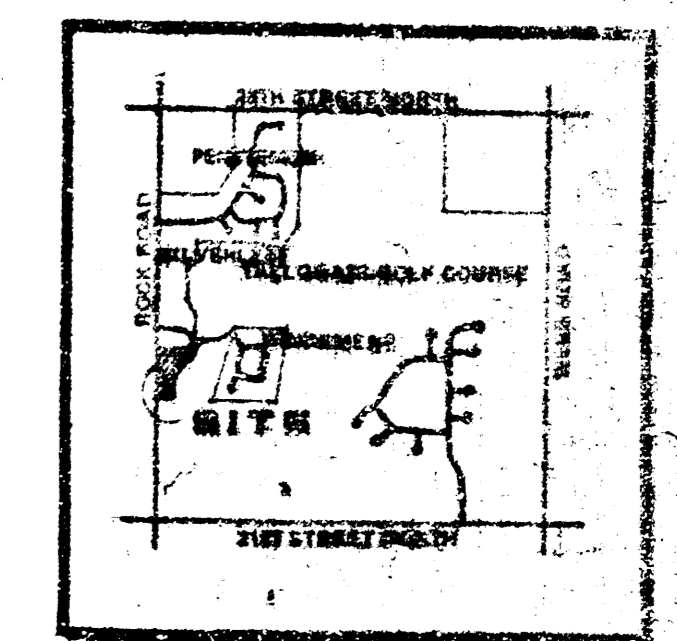
COMMENTS: Drainage & Utility Concept plan for referenced project.
 These are transmitted as checked below:
 For Your Approval As Requested
 For Your Use For Your Files
 Approved as Noted For Review and Comment

REMARKS:
 Copies: _____
 Signoff: _____
 Date: _____



NOTES
 DRAINAGE CONCEPT PLAN TO BE SUBMITTED BY M.K.&E. TO CITY ENGINEERING.
 SETBACKS AS PER GENERAL PROVISIONS 20.4 OF TALLGRASS C.U.P. (D.P. 96)
 BENCHMARK: SCORE MARK AT BASE OF "Y" POLE 30' W. AND 60' E. OF S.W. CORNER.
 ELEV.: 218.85
 RESERVE "A" AND "B" FOR UTILITIES, DRAINAGE, LANDSCAPING, ENTRY MONUMENTS AND HALLS.
 RESERVE "C" THRU "F" FOR UTILITIES, DRAINAGE AND LANDSCAPING.
 RESERVE "G" FOR PRIVATE STREET, DRAINAGE AND UTILITIES.
 ALL RESERVES TO BE MAINTAINED BY A HOMEOWNERS ASSOCIATION

BLUESTEM VILLAGE SECOND	AREA	AREA ACRES	C	T _c	I ₂	I ₁₀₀	Q ₂	Q ₁₀₀	PIPE SIZE	STOP
I	1.16		0.6	15	4.06	8.50	2.63	6.25	18"	10'
II	1.0		0.6	18	3.78	8.37	2.27	5.08	18"	10'
I & III	2.91		20	3.63	8.03	6.34*	14.02		18"	10'
III	1.75		0.6	20	3.53	8.08	3.61	8.42	18"	10'
I, II, III	3.91		20	3.63	8.03	6.42	18.84		18"	10'
IV	0.9		0.6	15	1.46	8.56	2.18	4.53	18"	10'



AREA MAP

Revised 1/16/06
 & approved

DRAINAGE AND UTILITY PLAN
BLUESTEM VILLAGE SECOND

