

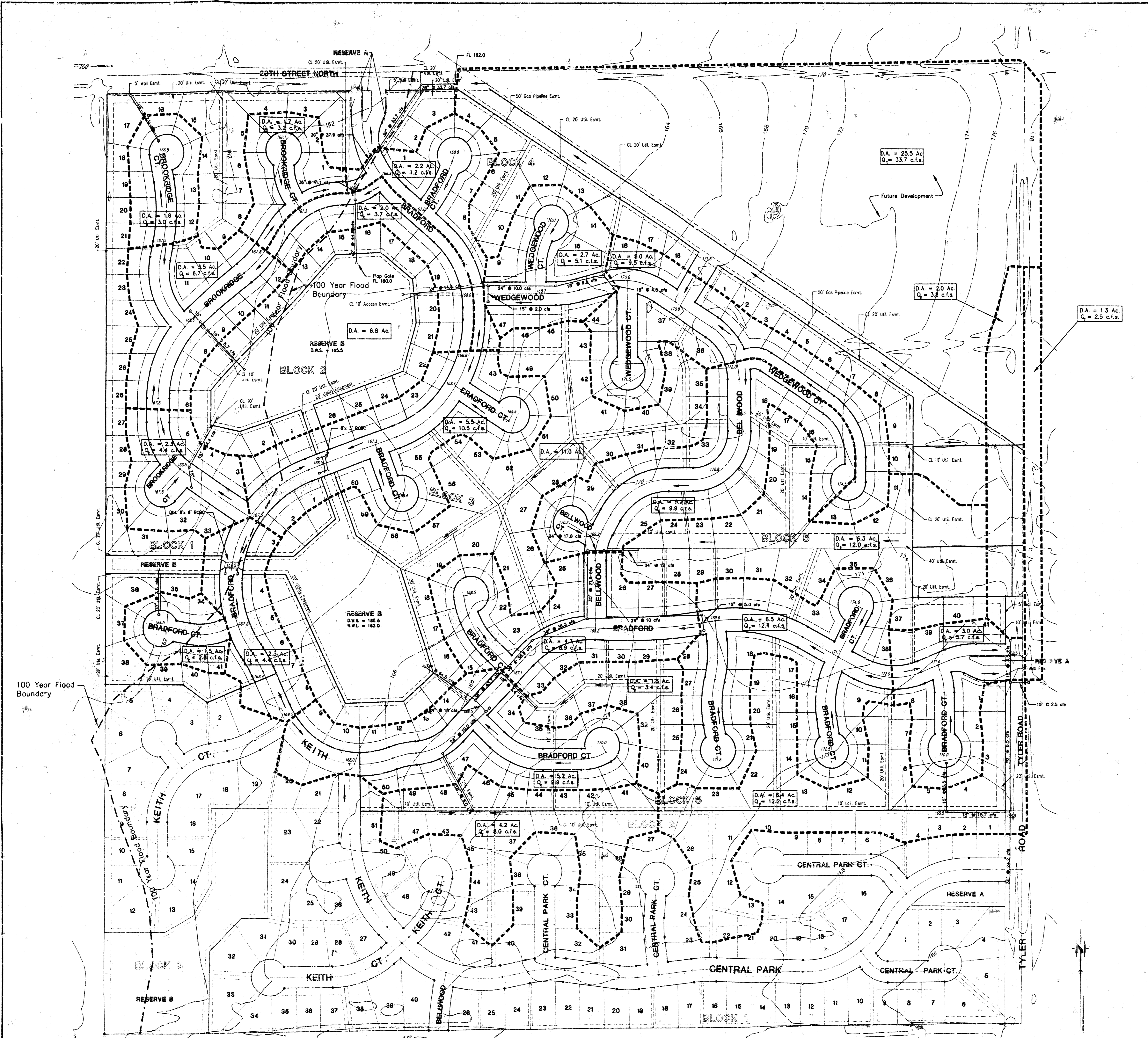
**DRAINAGE PLAN  
BRADFORD NORTH**

**AN ADDITION TO WICHITA, SEDGWICK COUNTY, KANSAS**

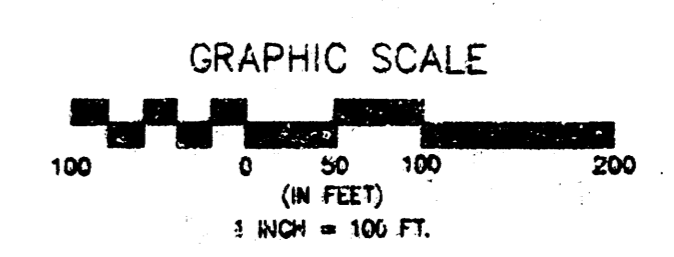
- REMARKS:**
1. City of Wichita Department of Public Works, dated 10/12/95, and 10/13/95, and 10/14/95, and 10/15/95, and 10/16/95, and 10/17/95, and 10/18/95, and 10/19/95, and 10/20/95, and 10/21/95, and 10/22/95, and 10/23/95, and 10/24/95, and 10/25/95, and 10/26/95, and 10/27/95, and 10/28/95, and 10/29/95, and 10/30/95, and 10/31/95, and 11/1/95, and 11/2/95, and 11/3/95, and 11/4/95, and 11/5/95, and 11/6/95, and 11/7/95, and 11/8/95, and 11/9/95, and 11/10/95, and 11/11/95, and 11/12/95, and 11/13/95, and 11/14/95, and 11/15/95, and 11/16/95, and 11/17/95, and 11/18/95, and 11/19/95, and 11/20/95, and 11/21/95, and 11/22/95, and 11/23/95, and 11/24/95, and 11/25/95, and 11/26/95, and 11/27/95, and 11/28/95, and 11/29/95, and 11/30/95, and 12/1/95, and 12/2/95, and 12/3/95, and 12/4/95, and 12/5/95, and 12/6/95, and 12/7/95, and 12/8/95, and 12/9/95, and 12/10/95, and 12/11/95, and 12/12/95, and 12/13/95, and 12/14/95, and 12/15/95, and 12/16/95, and 12/17/95, and 12/18/95, and 12/19/95, and 12/20/95, and 12/21/95, and 12/22/95, and 12/23/95, and 12/24/95, and 12/25/95, and 12/26/95, and 12/27/95, and 12/28/95, and 12/29/95, and 12/30/95, and 12/31/95.
  2. City of Wichita Department of Public Works, dated 10/12/95, and 10/13/95, and 10/14/95, and 10/15/95, and 10/16/95, and 10/17/95, and 10/18/95, and 10/19/95, and 10/20/95, and 10/21/95, and 10/22/95, and 10/23/95, and 10/24/95, and 10/25/95, and 10/26/95, and 10/27/95, and 10/28/95, and 10/29/95, and 10/30/95, and 10/31/95, and 11/1/95, and 11/2/95, and 11/3/95, and 11/4/95, and 11/5/95, and 11/6/95, and 11/7/95, and 11/8/95, and 11/9/95, and 11/10/95, and 11/11/95, and 11/12/95, and 11/13/95, and 11/14/95, and 11/15/95, and 11/16/95, and 11/17/95, and 11/18/95, and 11/19/95, and 11/20/95, and 11/21/95, and 11/22/95, and 11/23/95, and 11/24/95, and 11/25/95, and 11/26/95, and 11/27/95, and 11/28/95, and 11/29/95, and 11/30/95, and 12/1/95, and 12/2/95, and 12/3/95, and 12/4/95, and 12/5/95, and 12/6/95, and 12/7/95, and 12/8/95, and 12/9/95, and 12/10/95, and 12/11/95, and 12/12/95, and 12/13/95, and 12/14/95, and 12/15/95, and 12/16/95, and 12/17/95, and 12/18/95, and 12/19/95, and 12/20/95, and 12/21/95, and 12/22/95, and 12/23/95, and 12/24/95, and 12/25/95, and 12/26/95, and 12/27/95, and 12/28/95, and 12/29/95, and 12/30/95, and 12/31/95.
  3. City of Wichita Department of Public Works, dated 10/12/95, and 10/13/95, and 10/14/95, and 10/15/95, and 10/16/95, and 10/17/95, and 10/18/95, and 10/19/95, and 10/20/95, and 10/21/95, and 10/22/95, and 10/23/95, and 10/24/95, and 10/25/95, and 10/26/95, and 10/27/95, and 10/28/95, and 10/29/95, and 10/30/95, and 10/31/95, and 11/1/95, and 11/2/95, and 11/3/95, and 11/4/95, and 11/5/95, and 11/6/95, and 11/7/95, and 11/8/95, and 11/9/95, and 11/10/95, and 11/11/95, and 11/12/95, and 11/13/95, and 11/14/95, and 11/15/95, and 11/16/95, and 11/17/95, and 11/18/95, and 11/19/95, and 11/20/95, and 11/21/95, and 11/22/95, and 11/23/95, and 11/24/95, and 11/25/95, and 11/26/95, and 11/27/95, and 11/28/95, and 11/29/95, and 11/30/95, and 12/1/95, and 12/2/95, and 12/3/95, and 12/4/95, and 12/5/95, and 12/6/95, and 12/7/95, and 12/8/95, and 12/9/95, and 12/10/95, and 12/11/95, and 12/12/95, and 12/13/95, and 12/14/95, and 12/15/95, and 12/16/95, and 12/17/95, and 12/18/95, and 12/19/95, and 12/20/95, and 12/21/95, and 12/22/95, and 12/23/95, and 12/24/95, and 12/25/95, and 12/26/95, and 12/27/95, and 12/28/95, and 12/29/95, and 12/30/95, and 12/31/95.
  4. Top of street 7'0" and 1' below ground 10' 0" of center. Elevation 5,170.00.
  5. Top of street 7'0" and 1' below ground 10' 0" of center. Elevation 5,170.00.
  6. Top of street 7'0" and 1' below ground 10' 0" of center. Elevation 5,170.00.
  7. Top of street 7'0" and 1' below ground 10' 0" of center. Elevation 5,170.00.







100 Year Flood Boundary



**BENCHMARKS**

1. City of Wichita Benchmark disc @ Tyler Rd. and 25th St. N. in E. parking of Tyler Rd., 6.5' W. of Iron on E. R/W of Tyler Rd., 1' N. of fence corner E. & S. (from Dean Krug C.O.W.) Elev. 165.61
2. City of Wichita Benchmark disc @ Tyler Rd. and 29th St. N. at SW corner of section corner. (from Dean Krug C.O.W.)
3. Top of steel "T" post set 1' below ground 20' N. of center Section 5, 1275, R1W Elev. 162.27
4. Top of steel "T" post set 6" below ground, 2' E. of N-S fence, 3' E. and 24.9' N. of W 1/16 Corner of NE Cor. Sect. 5, 1275 R1W Elev. 162.92

**DRAINAGE PLAN**