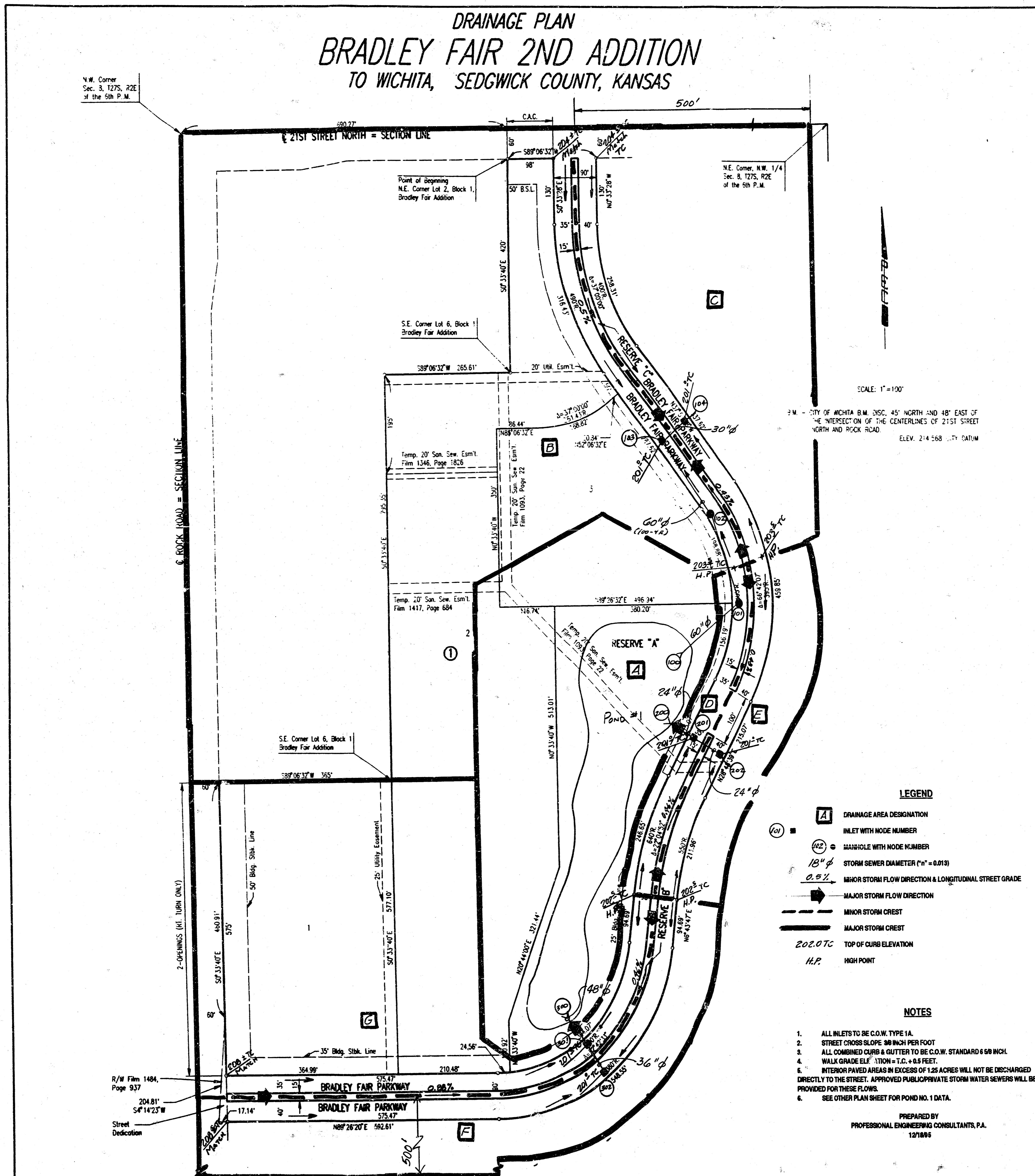


DRAINAGE PLAN BRADLEY FAIR 2ND ADDITION TO WICHITA, SEDGWICK COUNTY, KANSAS

N.W. Corner
Sec. 3, T27S, R2E
of the 5th P.M.



SCALE: 1"=100'
 B.M. - CITY OF WICHITA B.M. DSC. 45' NORTH AND 48' EAST OF
 THE INTERSECTION OF THE CENTERLINES OF 21ST STREET
 NORTH AND ROCK ROAD. ELEV. 214.568 CITY DATUM

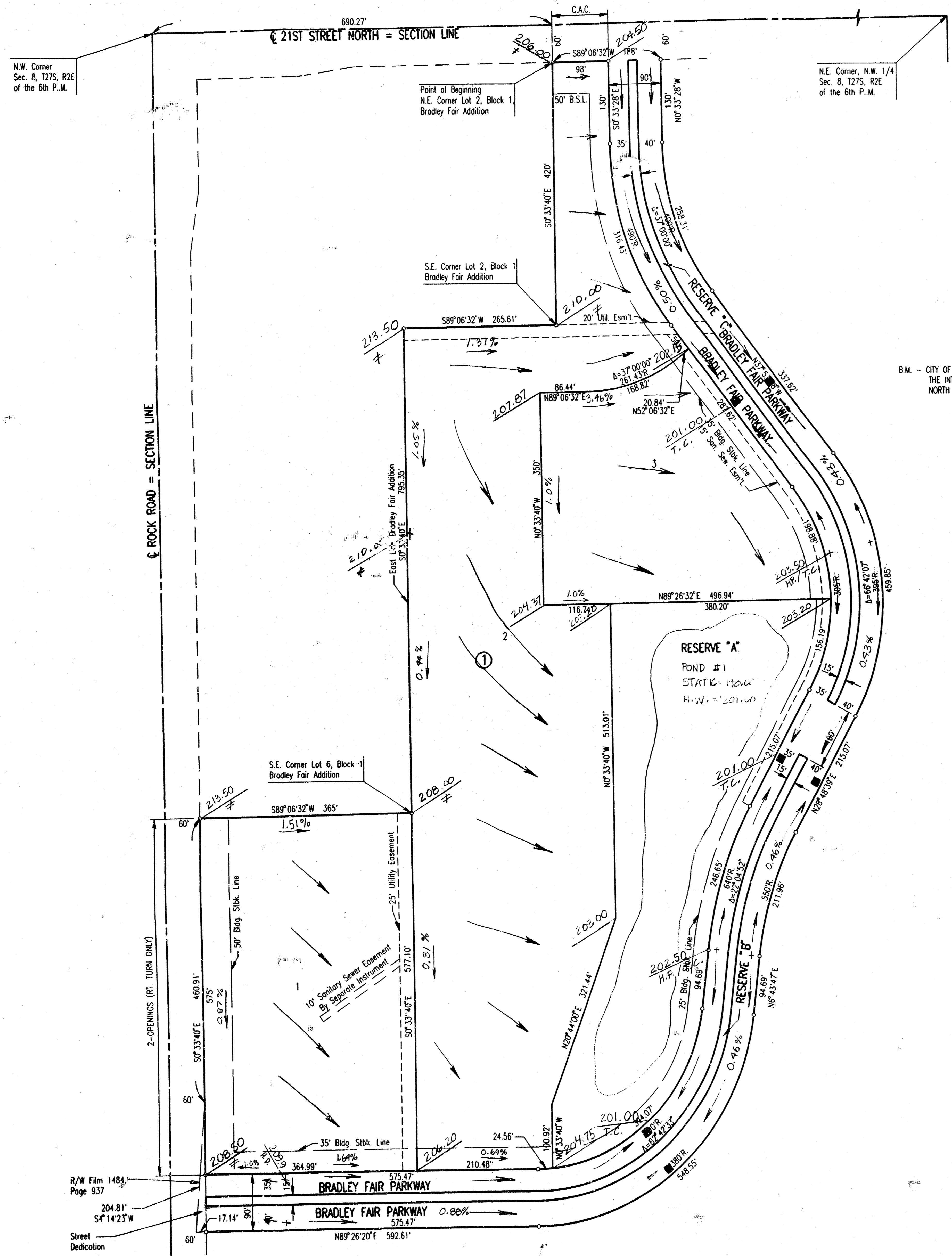
- LEGEND**
- A DRAINAGE AREA DESIGNATION
 - 101 INLET WITH NODE NUMBER
 - 102 MANHOLE WITH NODE NUMBER
 - 18" STORM SEWER DIAMETER (n^o = 0.013)
 - MINOR STORM FLOW DIRECTION & LONGITUDINAL STREET GRADE
 - MAJOR STORM FLOW DIRECTION
 - MINOR STORM CREST
 - MAJOR STORM CREST
 - TOP OF CURB ELEVATION
 - H.P. HIGH POINT

- NOTES**
1. ALL INLETS TO BE C.O.W. TYPE 1A.
 2. STREET CROSS SLOPE 30 INCH PER FOOT.
 3. ALL COMBINED CURB & GUTTER TO BE C.O.W. STANDARD 6 5/8 INCH.
 4. WALK GRADE ELEVATION = T.C. + 0.5 FEET.
 5. INTERIOR PAVED AREAS IN EXCESS OF 1.25 ACRES WILL NOT BE DISCHARGED DIRECTLY TO THE STREET. APPROVED PUBLIC/PRIVATE STORM WATER SEWERS WILL BE PROVIDED FOR THESE FLOWS.
 6. SEE OTHER PLAN SHEET FOR POND NO. 1 DATA.

PREPARED BY
 PROFESSIONAL ENGINEERING CONSULTANTS, P.A.
 12/18/85

SHEET NO.	TOTAL SHEETS

BRADLEY FAIR 2ND ADDITION TO WICHITA, SEDGWICK COUNTY, KANSAS



SCALE: 1"=100'

B.M. - CITY OF WICHITA B.M. DISC. 45' NORTH AND 48' EAST OF THE INTERSECTION OF THE CENTERLINES OF 21ST STREET NORTH AND ROCK ROAD. ELEV. 214.568 CITY DATUM

LEGEND

- - CURB INLET
- DIRECTION OF FLOW
- H.P. - HIGH POINT ELEVATION
- ≠ - MATCH EXISTING ELEVATION
- T.C. - TOP OF CURB ELEVATION
- ALL ELEVATIONS BASED ON CITY OF WICHITA DATUM.

**APPROVED
DRAINAGE PLAN**

BRADLEY FAIR 2ND ADDITION

LOT GRADING PLAN

3/29/96

PROFESSIONAL ENGINEERING CONSULTANTS, P.A.
ENGINEERS
WICHITA, KANSAS

Designed by	Checked by
Drawn by DEP	Date MAR, 1996 Job No. 96110

DSWR: PAUL MILLER OPER. DEP SCALE: 1"=100.00
 01/1996/196110/PA/PL/DMG 03-27-1996 9:43:32 am

R/W Film 1484
 Page 937
 204.81'
 S4°14'23"W
 Street
 Dedication