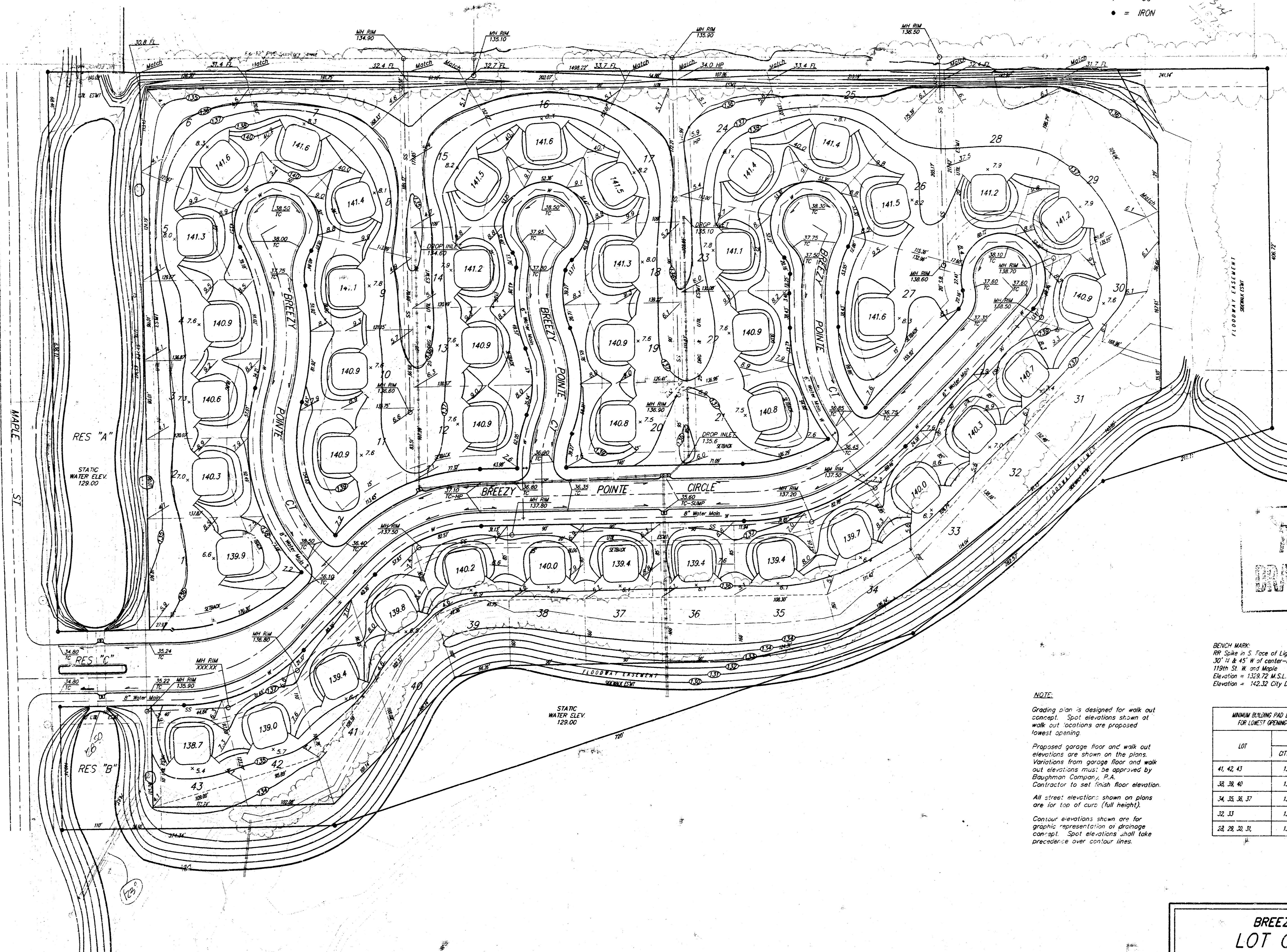

 1" = 60'
 • = IRON

DRAINAGE & UTILITY PLAN

BREEZY POINTE ADDITION LOT GRADING PLAN				
BAUGHMAN COMPANY P. A. ENGINEERING & SURVEYING 316/262-7271 • 315 ELLIS • WICHITA, KANSAS 67211				
PROJECT NUMBER				SHEET
1				OF
1				1
DESIGN	DRAWN	UTIL. CHECK'D	DATE	SCALE
P.J.M.	P.J.M.			1"=60'-0"

D:\Projects\0108
 01-08-99
 P.J.M.

D:\Projects\0108
 01-08-99
 P.J.M.



1" = 60'
 • = IRON

**APPROVED
 DRAINAGE PLAN**

BENCH MARK:
 RP: Stake in 5" Face of Light pole
 30" x 45" x 45" of center-line of
 15th St. W. and Maple
 Elevation = 129.72 M.S.L.
 Elevation = 142.32 City Datum

NOTE:
 Grading plan is designed for walk out
 concept. Spot elevations shown at
 walk out locations are proposed
 lowest opening.
 Proposed garage floor and walk out
 elevations are shown on the plans.
 Variations from garage floor and walk
 out elevations must be approved by
 Baughman Company, P.A.
 Contractor to set finish floor elevation.
 All street elevations shown on plans
 are for top of curb (full height).
 Contour elevations shown are for
 graphic representation of drainage
 concept. Spot elevations shall take
 precedence over contour lines.

LOT	ELEVATION	
	CITY DATUM	M.S.L.
41, 42, 43	135.1	132.5
38, 39, 40	135.6	133.0
34, 35, 36, 37	136.1	133.5
32, 33	136.6	134.0
28, 29, 30, 31	137.1	134.5

**BREEZY POINTE ADDITION
 LOT GRADING PLAN**

BAUGHMAN COMPANY P. A.
 ENGINEERING & SURVEYING
 316/262-7271 • 315 ELLIS • WICHITA, KANSAS 67211

DESIGN P.J.M.	DRAWN P.J.M.	APPROVED	DATE MAY 7, 92	SCALE 1"=60'	SHEET 1 OF 1
------------------	-----------------	----------	-------------------	-----------------	-----------------------