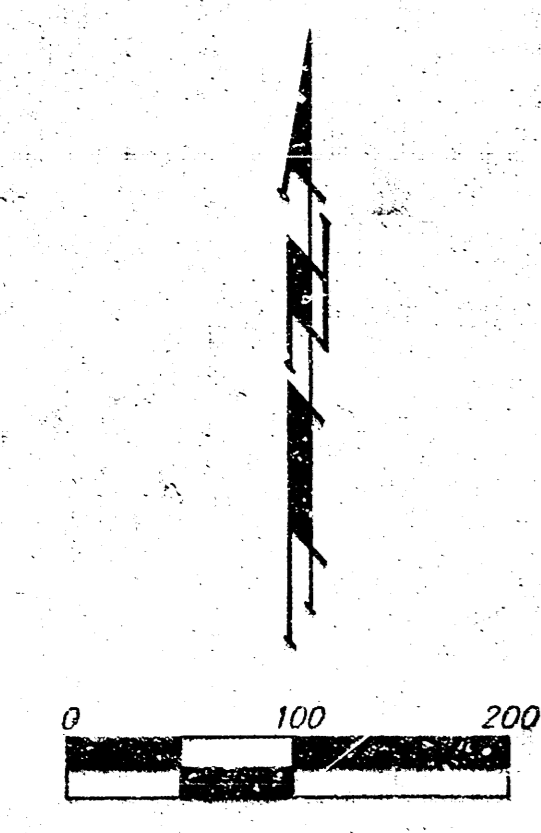


DRAINAGE PLAN BRIDGEFIELD II AN ADDITION TO SEDGWICK COUNTY, KANSAS



CONTOUR INTERVAL = 1 FT.

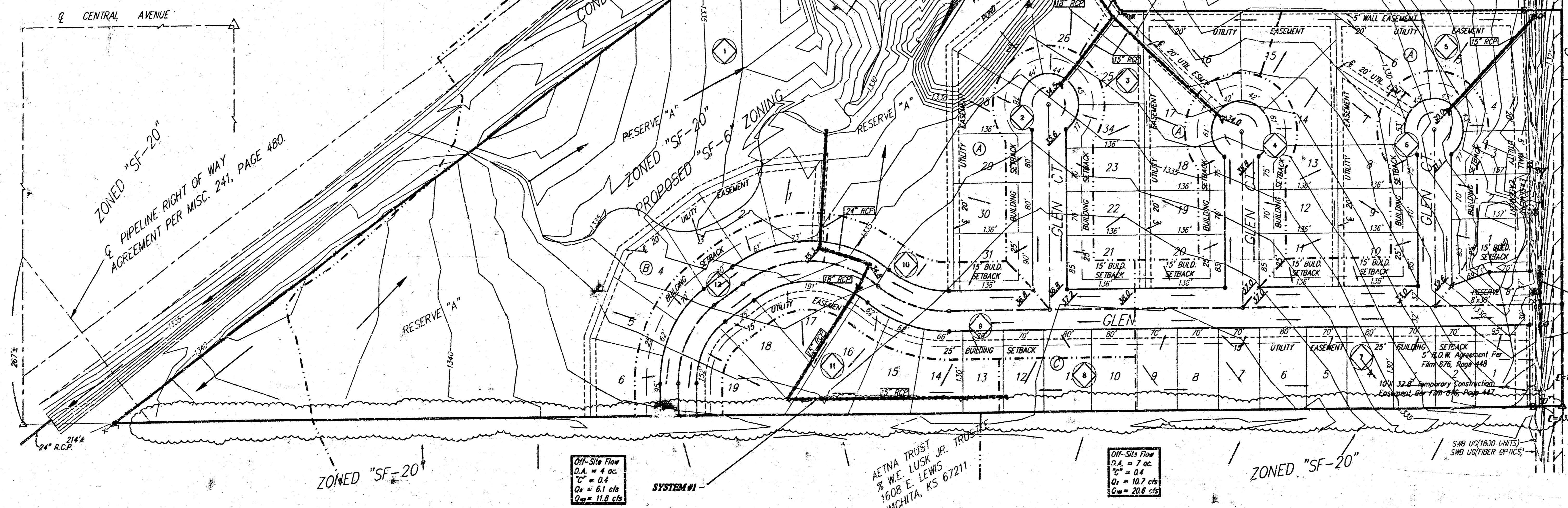
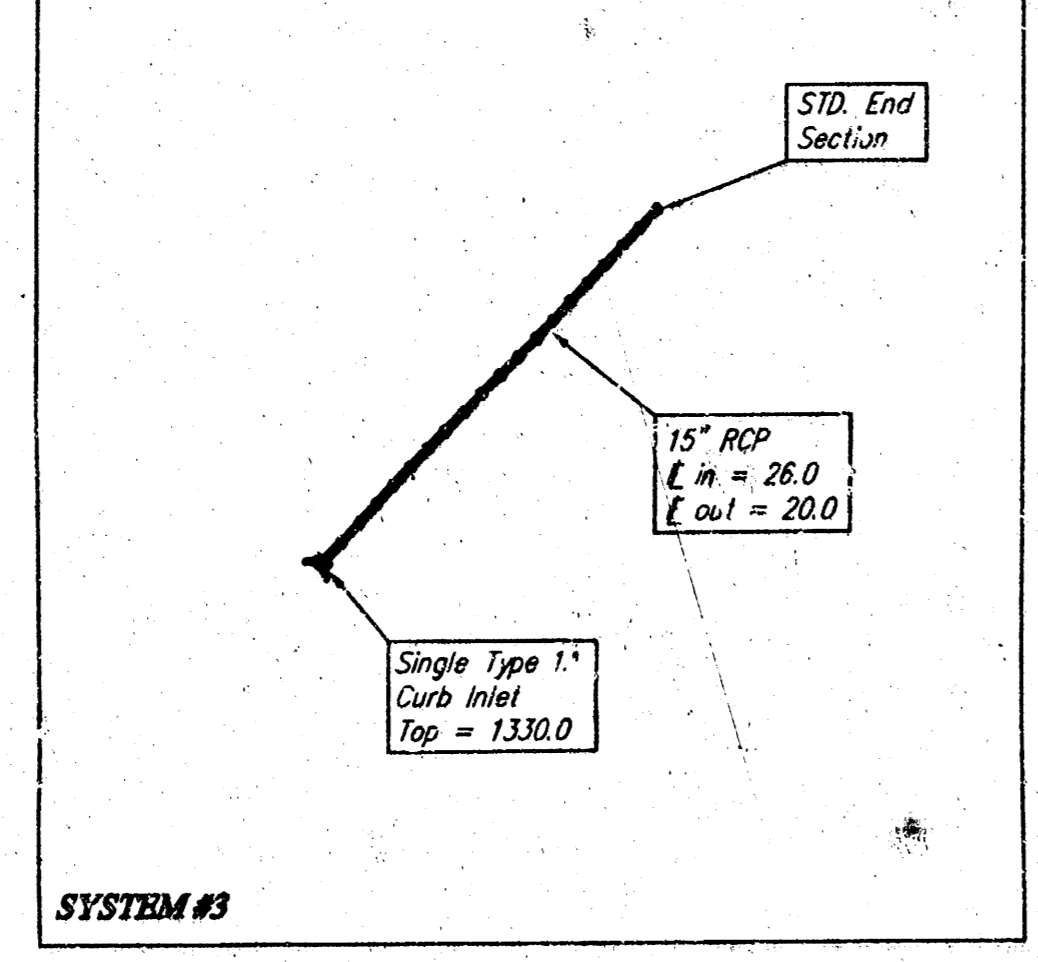
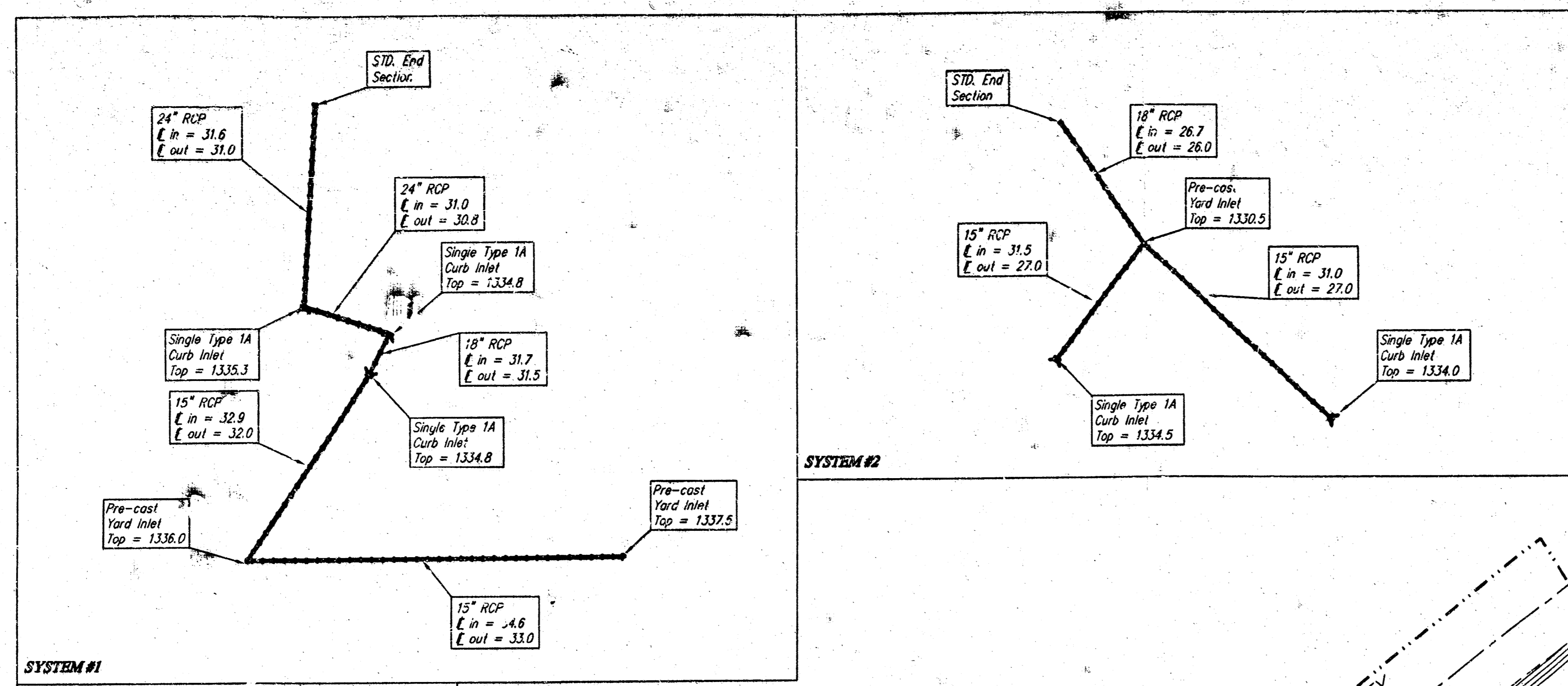
● = #4 BAUGHMAN REBAR (SET)
 ▲ = SECTION CORNER (FOUND)
 ⊠ = #4 P.E.C. REBAR (FOUND)

(D) = DESCRIBED
 (M) = MEASURED
 (C) = CALCULATED

Drainage Area	Area (Acres)	C _s	C _m	T _s	T _m	T _p	Q _s (CFS)	Q _m (CFS)	Q _p (CFS)
1	31.8	0.40	0.40	15	3.83	7.36	33.4	64.2	84.2
2	1.2	0.54	0.54	15	3.83	7.36	3.1	6.0	8.0
3	1.9	0.50	0.50	15	3.83	7.36	3.6	7.0	9.4
4	1.4	0.54	0.54	15	3.83	7.36	2.9	5.6	7.5
5	3.6	0.50	0.50	15	3.83	7.36	6.9	13.2	17.8
6	1.6	0.54	0.54	15	3.83	7.36	3.3	6.4	8.7
7	2.7	0.52	0.52	15	3.83	7.36	5.4	10.3	14.0
8	0.5	0.50	0.50	15	3.83	7.36	1.5	2.9	3.9
9	1.6	0.54	0.54	15	3.83	7.36	3.3	6.4	8.7
10	0.8	0.54	0.54	15	3.83	7.36	1.2	2.4	3.2
11	1.0	0.50	0.50	15	3.83	7.36	2.5	4.8	6.4
12	0.8	0.54	0.54	15	3.83	7.36	1.7	3.2	4.3

LOT	BLOCK	ELEVATION HIGHER
26-31	A	1,332
1-6	B	1,332
RESERVE "A"		1,332

BENCHMARK:
 "C" CUT ON TOP OF CURB, NORTH SIDE SIEKES, NW OF CENTER LINE OF SIEKES CT., SHADYBROOK MEADOW ADDITION.
 ELEV = 1322.59 NGVD 88

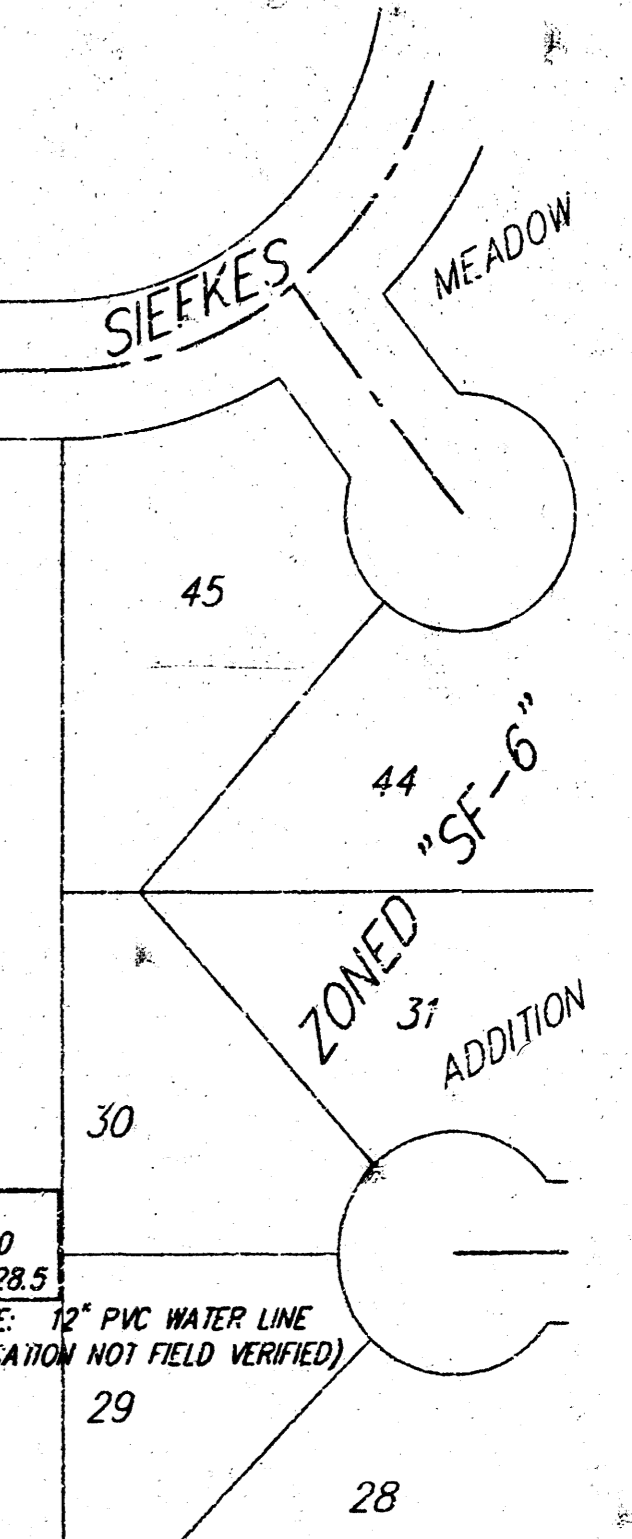
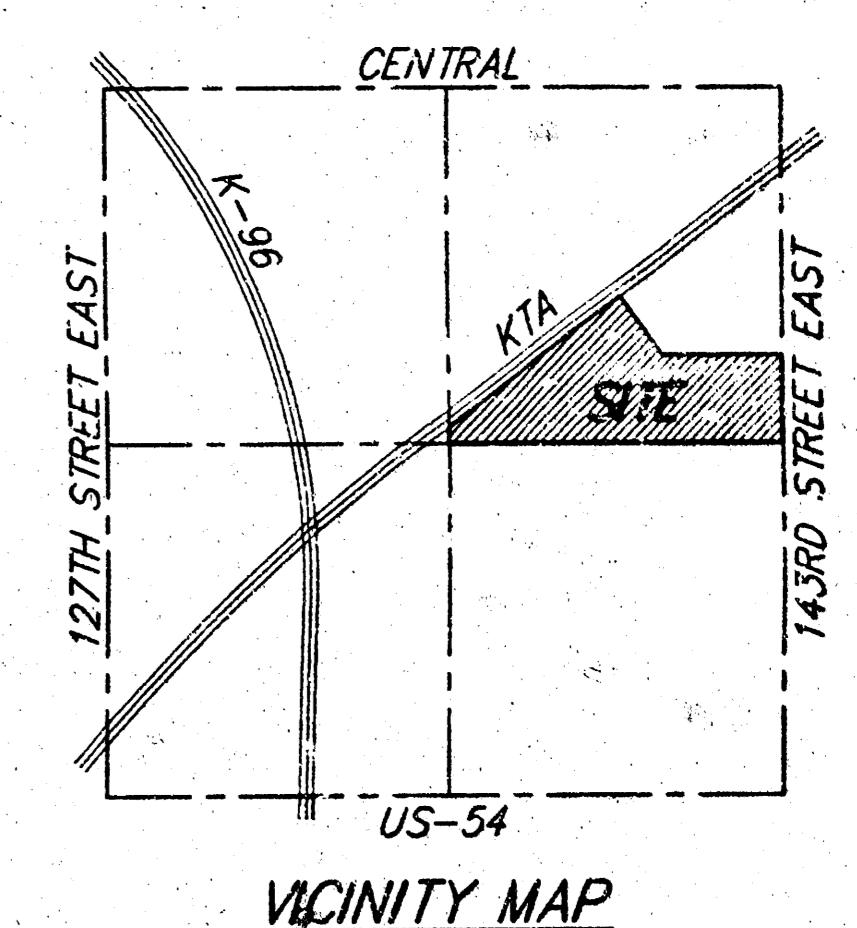


OWNER:
 SCOTT VENTURES LLC
 21 SCOTSDALE
 WICHITA, KS 67230

LEGAL DESCRIPTION:
 ALL THAT PORTION OF THE NE 1/4 OF SEC. 23, TWP. 27-S, R-2-E OF THE 6TH P.M., SEDGWICK COUNTY, KANSAS LING SOUTH AND EAST OF THE SOUTHERLY RIGHT-OF-WAY LINE OF THE KANSAS TURNPIKE AS DESCRIBED IN THAT CERTAIN CONDEMNATION IN DISTRICT COURT OF SEDGWICK COUNTY, KANSAS, STYLED AS CASE NO. A-54126, EXCEPT A TRACT OF LAND IN THE NE 1/4 OF SEC. 23, TWP. 27-S, R-2-E OF THE 6TH P.M., SEDGWICK COUNTY, KANSAS DESCRIBED AS FOLLOWS: COMMENCING AT THE NE CORNER OF SAID NE 1/4, THENCE ON AN ASSUMED BASIS OF BEARING OF S00D624°W ALONG THE EAST LINE OF SAID NE 1/4, 843.22 FEET TO THE INTERSECTION OF THE SOUTHERLY RIGHT-OF-WAY LINE OF KANSAS TURNPIKE AUTHORITY, CONDEMNATION CASE A-54126, AND FOR A POINT OF BEGINNING, THENCE CONTINUING S00D624°W ALONG THE EAST LINE OF SAID NE 1/4, 1772.59 FEET, THENCE A80D336°W PERPENDICULAR TO THE EAST LINE OF SAID NE 1/4, 75419.42 FT, THENCE N83D327°W, 467.19 FEET, MORE OR LESS, TO A POINT ON THE SOUTHERLY RIGHT-OF-WAY LINE OF KANSAS TURNPIKE AUTHORITY, CONDEMNATION CASE A-4749; THENCE N07D572°E, 2511 FEET TO THE POINT OF BEGINNING, SUBJECT TO ROAD RIGHT-OF-WAY AGREEMENTS ON 143RD STREET EAST (PLM 876, PAGE 450), (PLM 876, PAGE 448), QUIT CLAIM DEED (PLM 845, PAGE 1441), AND RIGHT-OF-WAY AGREEMENT RECORDED G-12-59.

BENCHMARK:
 "C" CUT ON TOP OF CURB, NORTH SIDE SIEKES, NW OF CENTER LINE OF SIEKES CT., SHADYBROOK MEADOW ADDITION.
 ELEV = 1322.59 M.S.L.

NOTE:
 RESERVE "A" SHALL BE RESERVED FOR A PRIVATE GOLF COURSE AND PRIVATE GOLF COURSE RELATED FACILITIES, AND UTILITIES AS CONFINED TO EASEMENTS.



NOTE: The proposed drainage plan provided herein is a generally defined plan to follow for design. It is recognized and assumed that upon the final design of street and storm sewer improvements within this plat the designer will modify or alter the general drainage plan as necessary in order to implement the installation of the improvements to obtain the most economical design and construction possible.