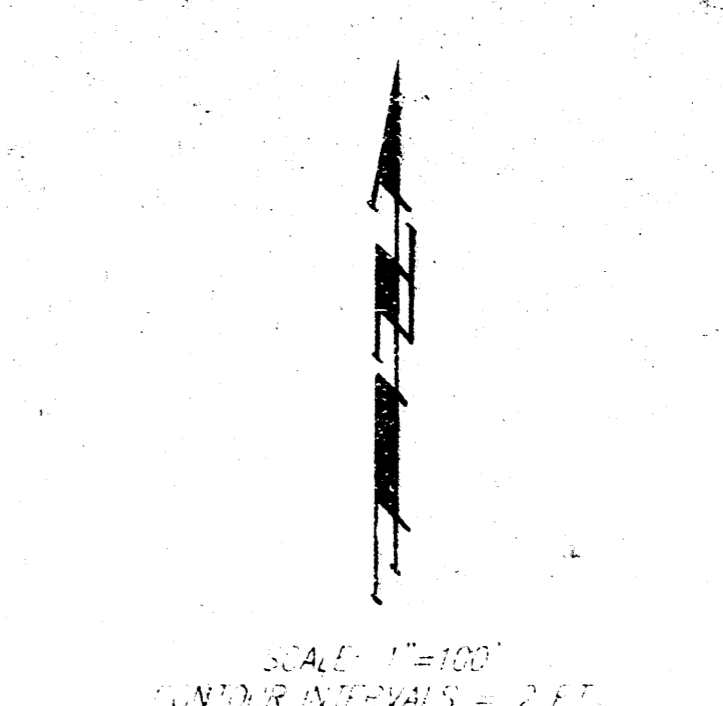
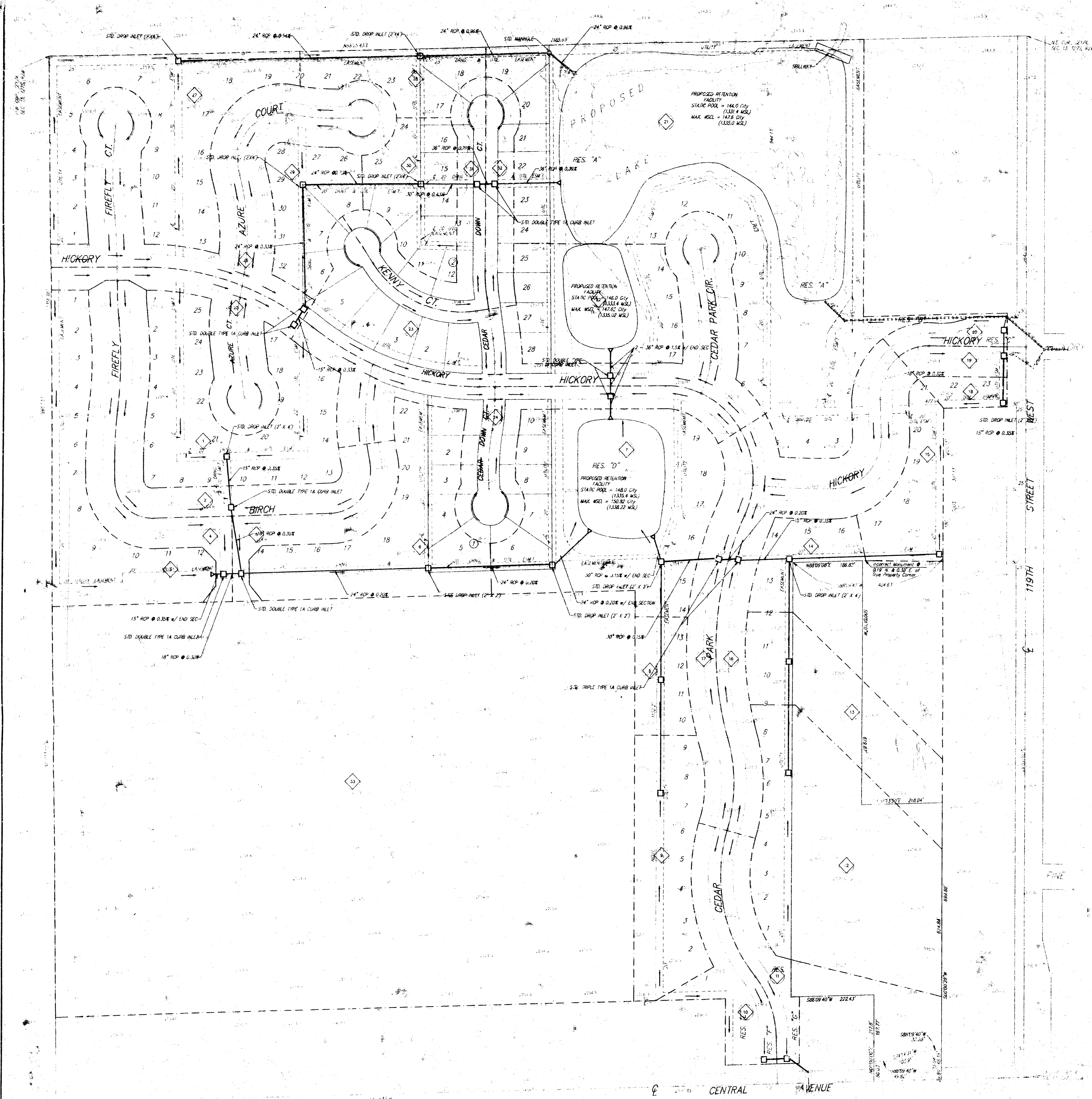


DRAINAGE PLAN
BUCKHEAD 2ND ADDITION
 WICHITA, SEDGWICK COUNTY, KANSAS



LEGAL DESCRIPTION
 A TRACT IN THE SE1/4 OF SEC. 10, T.14N., R.12E., S.14W., KANSAS

OWNER
 WICHITA AVENUES
 4774 1/2 W. 119TH ST.
 WICHITA, KANSAS 67202

DESIGNER
 1500 W. 119TH ST., SUITE 100
 WICHITA, KANSAS 67202

◆ Drainage Basin Label
 --- Drainage Basin Boundary
 - - - Proposed SWS

DRAINAGE DATA

Basin No.	Area (ac)	CN	Q ₁ (cfs)	Q ₁₀₀ (cfs)
1	3.66	75	4	12
2	7.20	90	5	12
3	3.01	75	3	14
4	1.81	90	4	10
5	1.18	90	2	7
6	3.56	75	4	16
7	5.89	90	12	34
8	1.21	75	1	5
9	2.61	75	3	12
10	1.04	90	3	7
11	1.3	40	4	6
12	6.11	75	12	35
13	2.72	75	7	13
14	3.41	75	4	15
15	1.42	75	5	6
16	1.41	30	3	7
17	1.55	60	3	5
18	1.67	75	3	2
19	2.47	40	1	3
20	3.48	90	1	3
21	14.05	60	11	15
22	5.01	40	4	17
23	5.14	30	11	24
24	3.79	40	7	19
25	1.82	30	4	11
26	4.46	90	10	23
27	4.57	75	4	16
28	1.33	75	1	6
29	1.60	75	2	7
30	1.81	75	2	8
31	1.72	60	4	10
32	1.04	40	3	7
33	1.04	40	3	7

NOTE: The proposed drainage plan is based upon a 1% probability rainfall event. The proposed drainage plan is based upon a 1% probability rainfall event. The proposed drainage plan is based upon a 1% probability rainfall event.

BAUGHMAN COMPANY P.A.
 1500 W. 119TH ST., SUITE 100
 WICHITA, KANSAS 67202