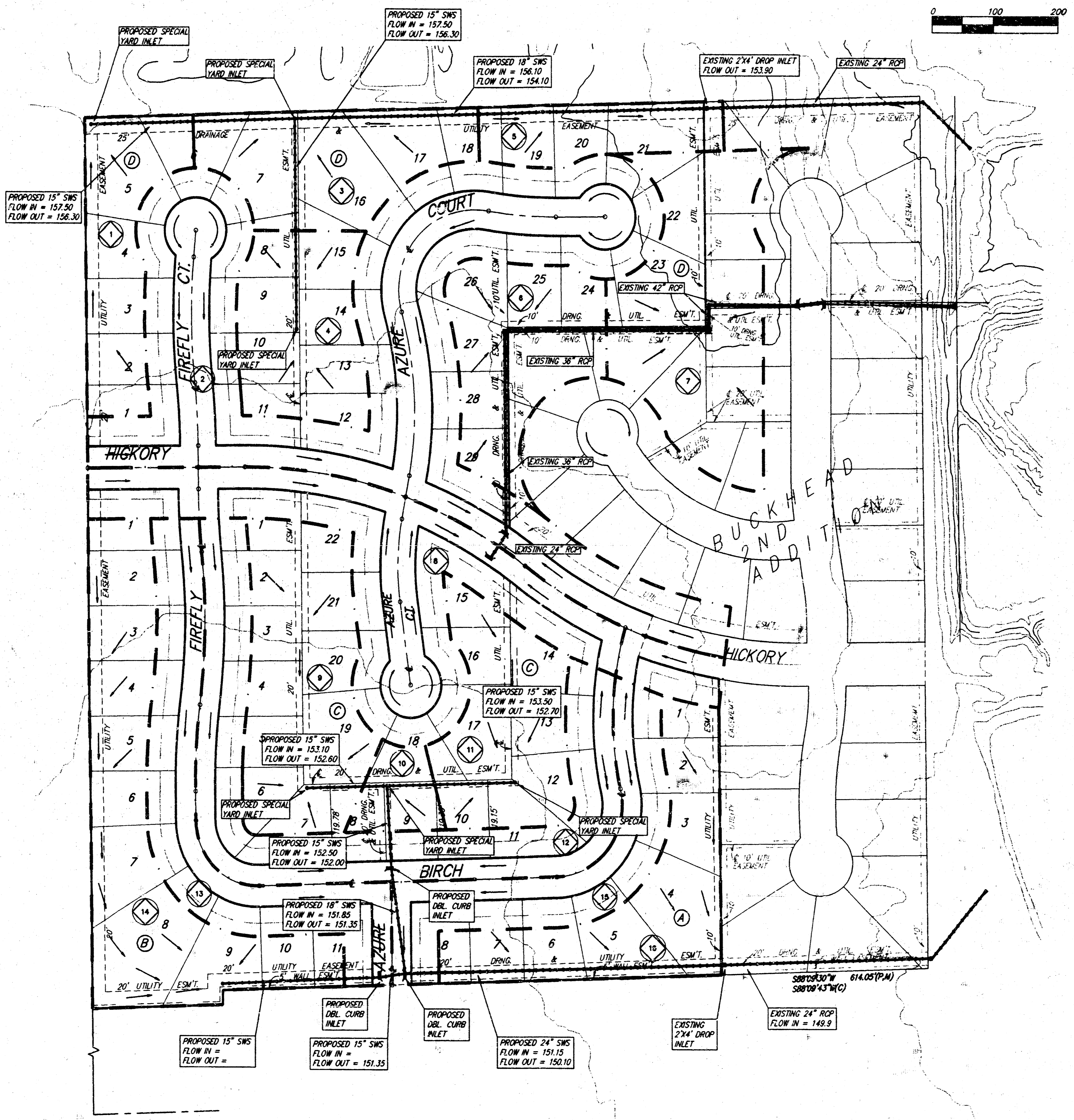


DRAINAGE PLAN
BUCKHEAD 3RD ADDITION
 WICHITA, SEDGWICK COUNTY, KANSAS



Drainage Area	Area (Acres)	Q ₁	Q ₂	Q ₃	Q ₄	Q ₅	Q ₆	Q ₇	Q ₈	Q ₉	Q ₁₀
1	1.1	0.94	0.94	15	3.83	7.36	2.3	4.4			
2	5.8	0.94	0.94	15	3.83	7.36	12.0	23.0			
3	1.4	0.94	0.94	15	3.83	7.36	2.9	9.5			
4	1.3	0.94	0.94	15	3.83	7.36	2.7	5.2			
5	0.7	0.94	0.94	15	3.83	7.36	1.4	2.9			
6	1.4	0.94	0.94	15	3.83	7.36	2.9	5.6			
7	2.5	0.94	0.94	15	3.83	7.36	4.6	9.1			
8	2.7	0.94	0.94	15	3.83	7.36	3.8	10.7			

Drainage Area	Area (Acres)	Q ₁	Q ₂	Q ₃	Q ₄	Q ₅	Q ₆	Q ₇	Q ₈	Q ₉	Q ₁₀
9	1.9	0.94	0.94	15	3.83	7.36	3.9	7.5			
10	0.4	0.94	0.94	15	3.83	7.36	0.8	1.6			
11	1.4	0.94	0.94	15	3.83	7.36	2.9	5.6			
12	2.4	0.94	0.94	15	3.83	7.36	5.0	9.5			
13	1.7	0.94	0.94	15	3.83	7.36	3.5	6.8			
14	2.4	0.94	0.94	15	3.83	7.36	5.0	9.5			
15	1.2	0.94	0.94	15	3.83	7.36	2.7	5.2			
16	1.8	0.94	0.94	15	3.83	7.36	3.5	6.4			

February 13, 1998

BAUGHMAN COMPANY P. A.
 ENGINEERING, SURVEYING, & PLANNING
 316-262-7271 • 315 ELLIS • WICHITA, KANSAS 67211
 F:\HYDRO\LAN\BUCKL3RD-04