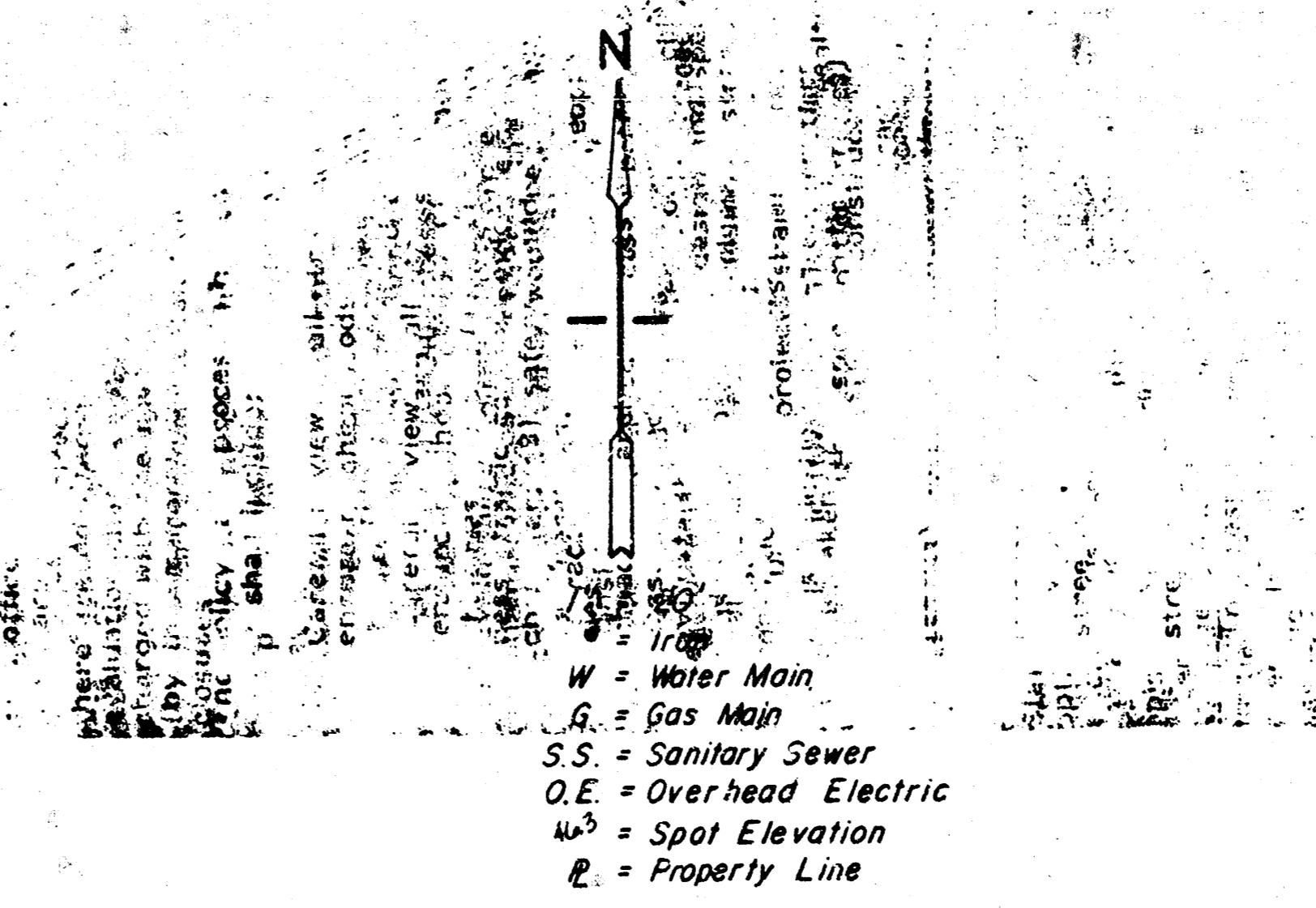
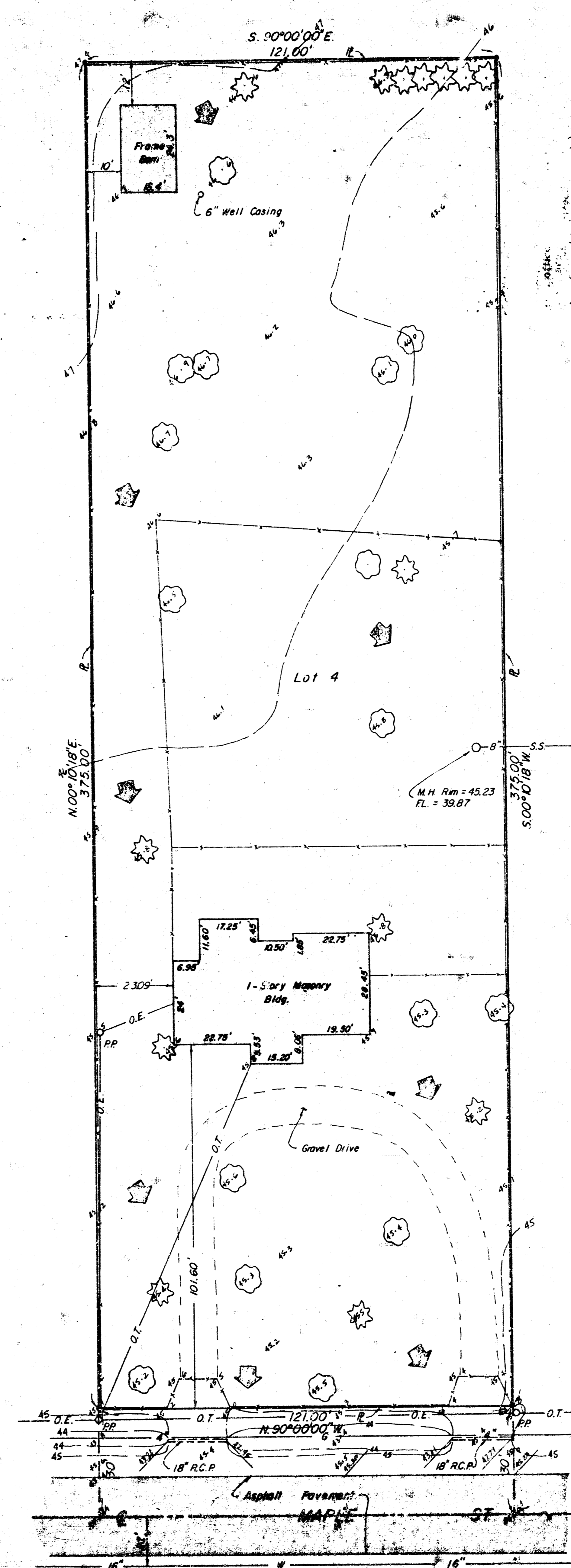


CANNON BALL ADDITION

CANNON BALL ADDITION
(SHEET 2 OF 2)



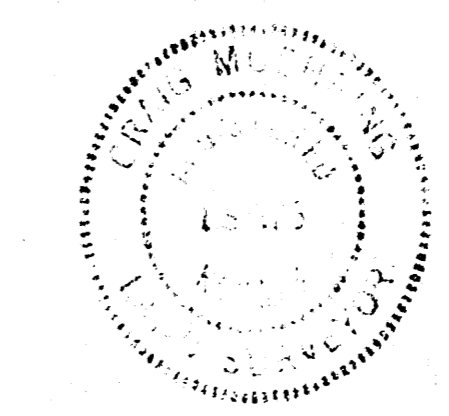
CANNON BALL ADDITION
DRAINAGE PLAN &
VICINITY MAP

LEGAL DESCRIPTION -
LOT 4, WESTFIELD ACRES,
SEDCWICK COUNTY, KANSAS.

BENCHMARK -
R.R. Spike in Power Pole at
S.E. Prop. Cor. Elev. 145.82
City Datum.

Note - Add 100.00 to spot
elevations to convert to
City Datum.

**APPROVED
DRAINAGE PLAN**



S.E. Cor Sec 20, T.27S,
R.1W of the 6th PM,
Sedgwick Co., Ks.

MOEHRING & ASSOCIATES
CONSULTING ENGINEERS
WICHITA
Feb. 28, 1986

FILMED FROM THE BEST
AVAILABLE COPY