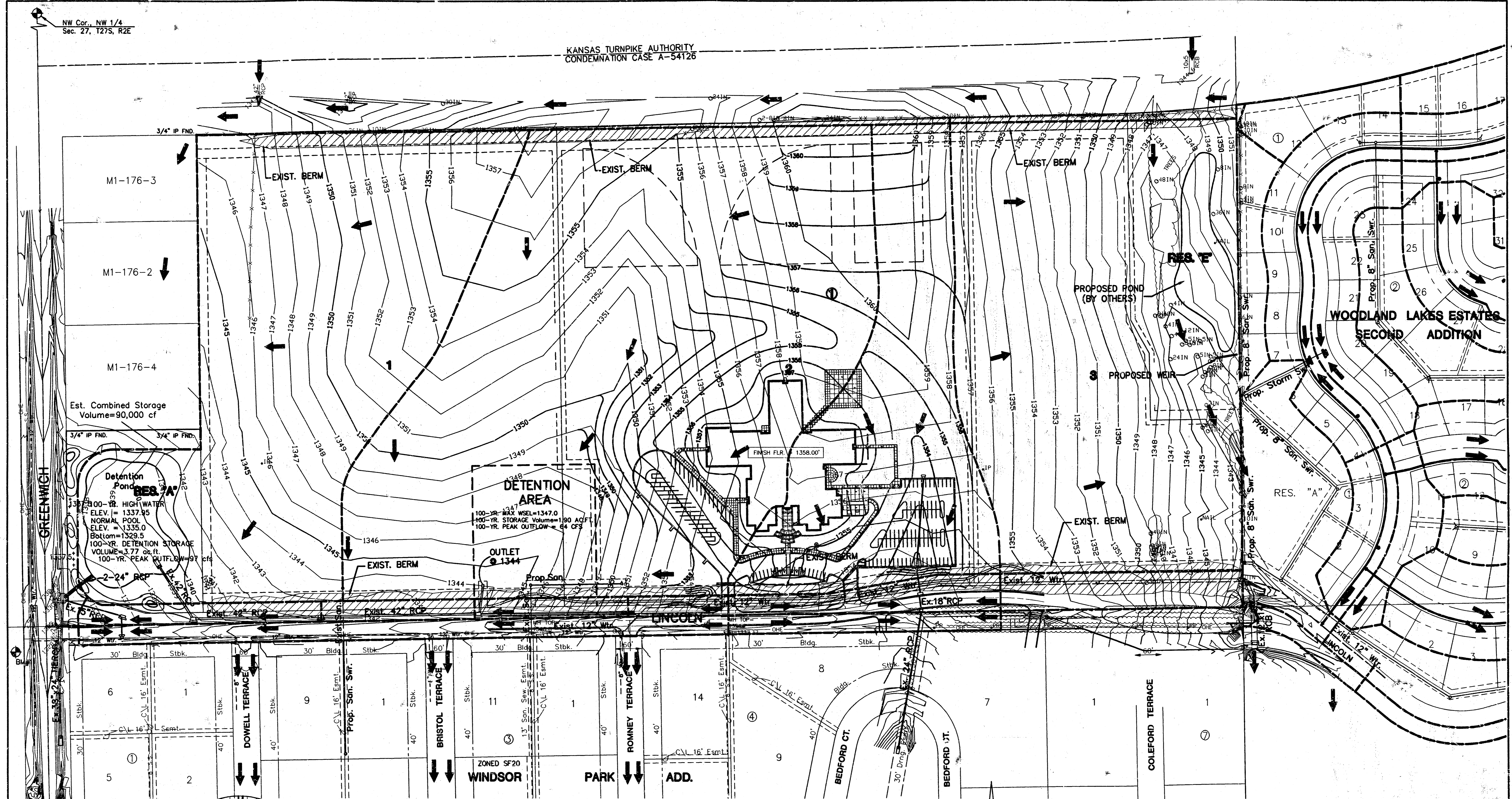


NW Cor., NW 1/4
Sec. 27, T27S, R2E

KANSAS TURNPIKE AUTHORITY
CONDEMNATION CASE A-54126



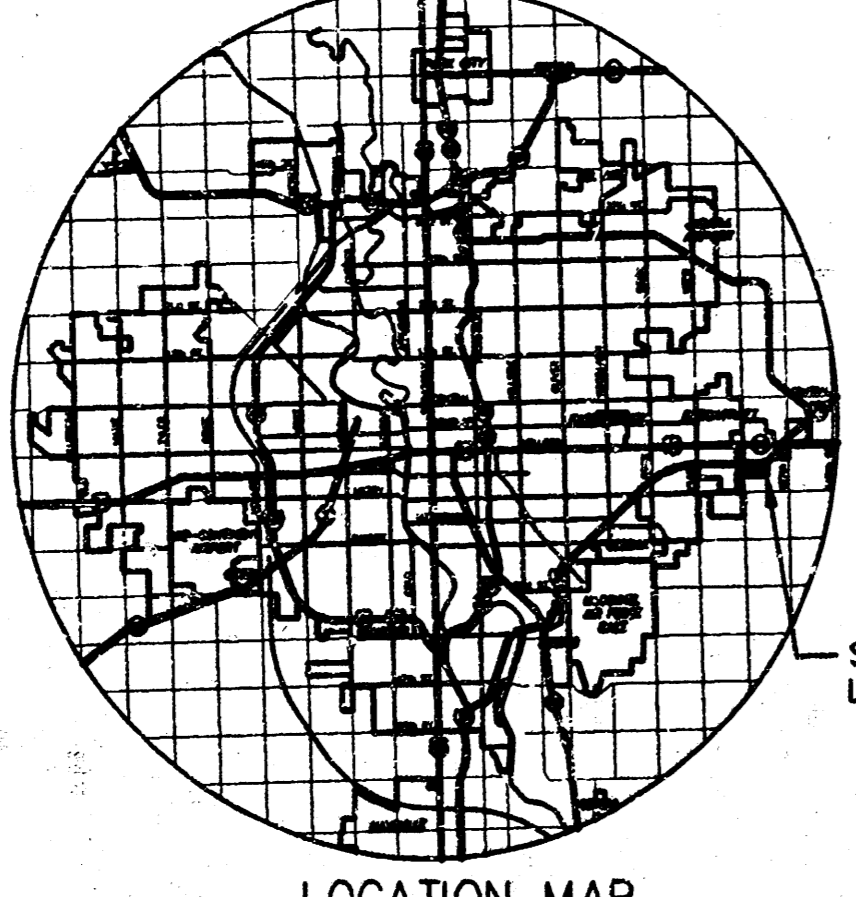
Est. Combined Storage
Volume=90,000 cf

Detention Pond
 133' x 100' - 15' HIGH WATER
 ELEV. = 1337.95
 NORMAL POOL
 ELEV. = 1335.0
 Bottom = 1329.5
 100-YR. DETENTION STORAGE
 VOLUME = 3.77 cfs ft
 100-YR. PEAK OUTFLOW = 97 cfs

DETECTION AREA
 100-YR. WSEL = 1347.0
 100-YR. STORAGE VOLUME = 180 ACFT
 100-YR. PEAK OUTFLOW = 64 CFS

OUTLET @ 1344

FINISH FLR 1358.00'



- ZONING**
 EXISTING - SF20
 PROPOSED - SF6
 (CHANGE BY ANNEXATION)
- RESERVE A-H**
 UTILITY EASEMENT
 LANDSCAPING
 BERMING
 OPEN SPACE
- RESERVE A, H**
 DRAINAGE LAKE
- RESERVE I & J**
 ENTRY MONUMENT
 LANDSCAPING
 BERMING
 OPEN SPACE
- RESERVE A**
 ENTRY MONUMENT

BENCHMARKS
 BM#1 604 in HLP 105' E & 45' W of 1/4 cor.
 Elev.=1334.61

SCALE: 1" = 100'
 100 0 100 200
 Date: 4/22/96
 Survey: MKEC 4/96

DRAINAGE AND UTILITY PLAN (REVISED 2-3-99)
CEDAR VIEW ADDITION

OWNER: LEEWOOD HOMES, INC.
 JOE LEE, PRESIDENT
 3500 N. ROCK ROAD BLDG. 2200, STE. 204
 WICHITA, KANSAS 67226

MID-KANSAS ENGINEERING CONSULTANTS, INC.
 411 N. WEBB ROAD
 WICHITA, KS. 67206
 316-684-9500

Sheet
 1
 of
 1

96037-160

F:\CIVIL\96037\PROP\DRN\DRN.DWG Thu Feb 16 16:53:19 1999

F:\CIVIL\96037\PROP\DRN\DRN.DWG Thu Feb 16 16:53:19 1999