

SITE DRAINAGE PLAN
CENTRAL MAIZE SCHOOLS ADDITION
 Sedgwick County, Kansas



1" = 150'

BENCHMARK

60 4 SPIKE IN NORTH POLE OF "H" FRAME TRANSMISSION LINE, EAST OF S.E. COR., N.E. 1/4, SEC. 32. ELEV. = 1363.49 N.G.V.D.

TOP OF IRON, N.W. COR., N.E. 1/4, N.W. 1/4, SECTION 32. ELEV. = 1353.38 N.G.V.D.

ADD 1300.00 TO SPOT ELEV'S. TO CONVERT TO N.G.V.D.

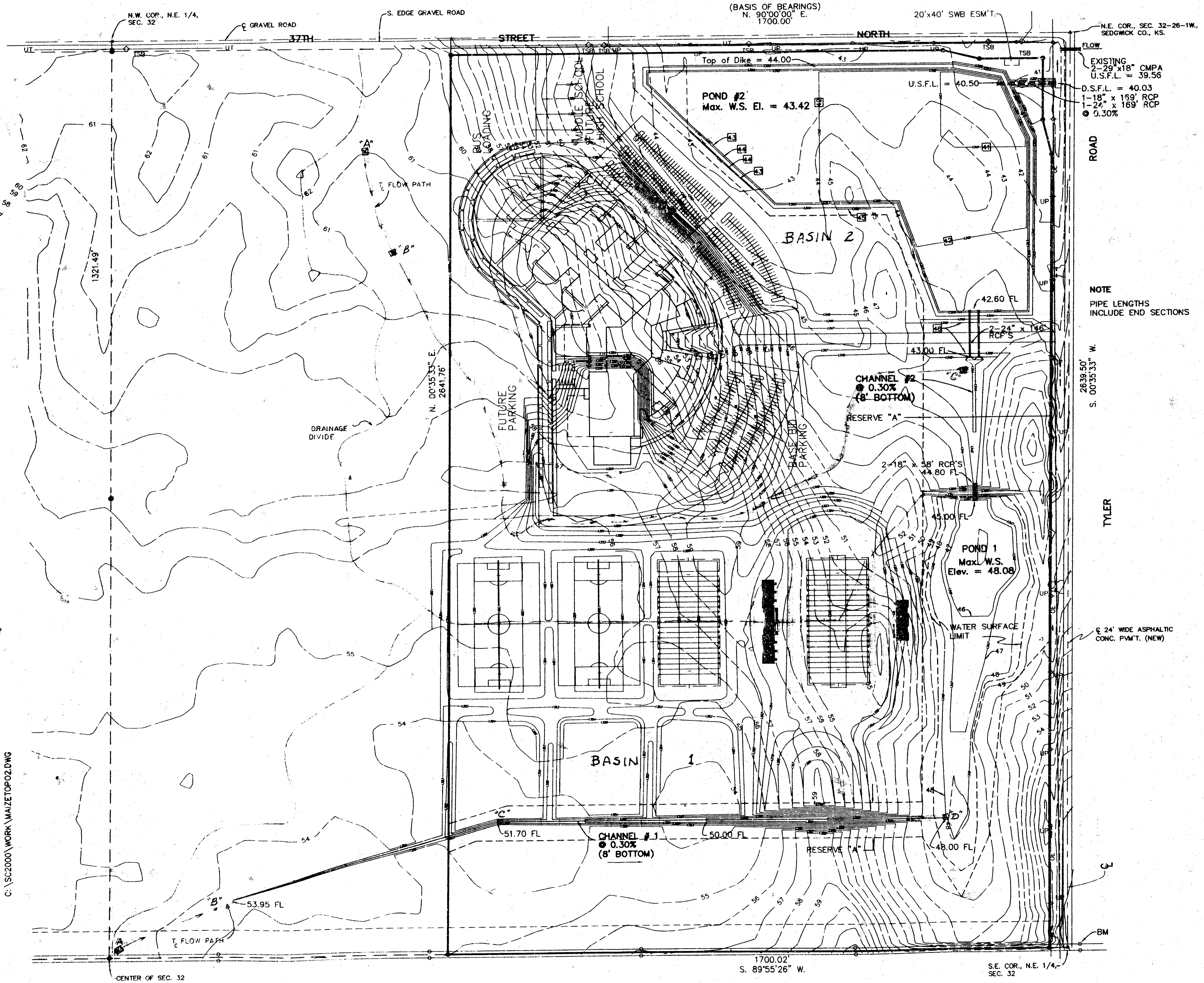
THE EAST 1700.00 FEET OF THE N.E. 1/4 OF SECTION 32, TOWNSHIP 26 SOUTH, RANGE 1 WEST OF THE 6TH P.M., SEDGWICK COUNTY, KANSAS.

- ▲ = IRON FOUND (UNKNOWN ORIGIN)
- = IRON SET W/ "MOEHRING" CAP

LEGEND

- UP = UTILITY POLE
- OE = OVERHEAD ELECTRIC
- UT = UNDERGROUND TELEPHONE
- TSB = TELEPHONE SPlice BOX

MOEHRING & ASSOCIATES
 CONSULTING ENGINEERS
 433 S. HYDRAULIC
 WICHITA, KS.
 263-8291



C:\SC2000\WORK\MAIZETOPOZ.DWG