

**DRAINAGE PLAN**  
**CHADSWORTH PLAZA**  
 AN ADDITION TO WICHITA, SEDGWICK COUNTY, KANSAS

OWNER: BRUCE A. PEARSON  
 UNPLATTED  
 ZONED: SF-5

BENCHMARK #1: CITY OF WICHITA BENCH MARK DISC IN TOP OF CURB AT W. END OF MEDIAN, IN CENTER STERLING STREET, E. SIDE OF MAIZE RD. (2400 BLOCK N. MAIZE RD.)

ELEV. = 1353.57

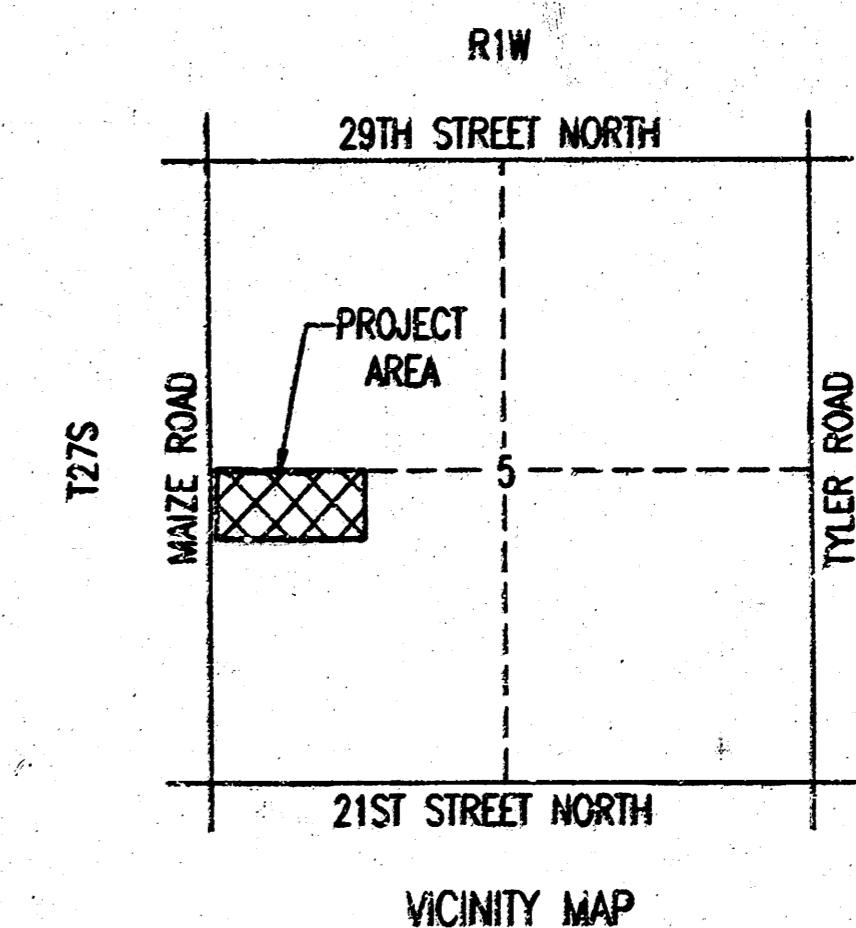
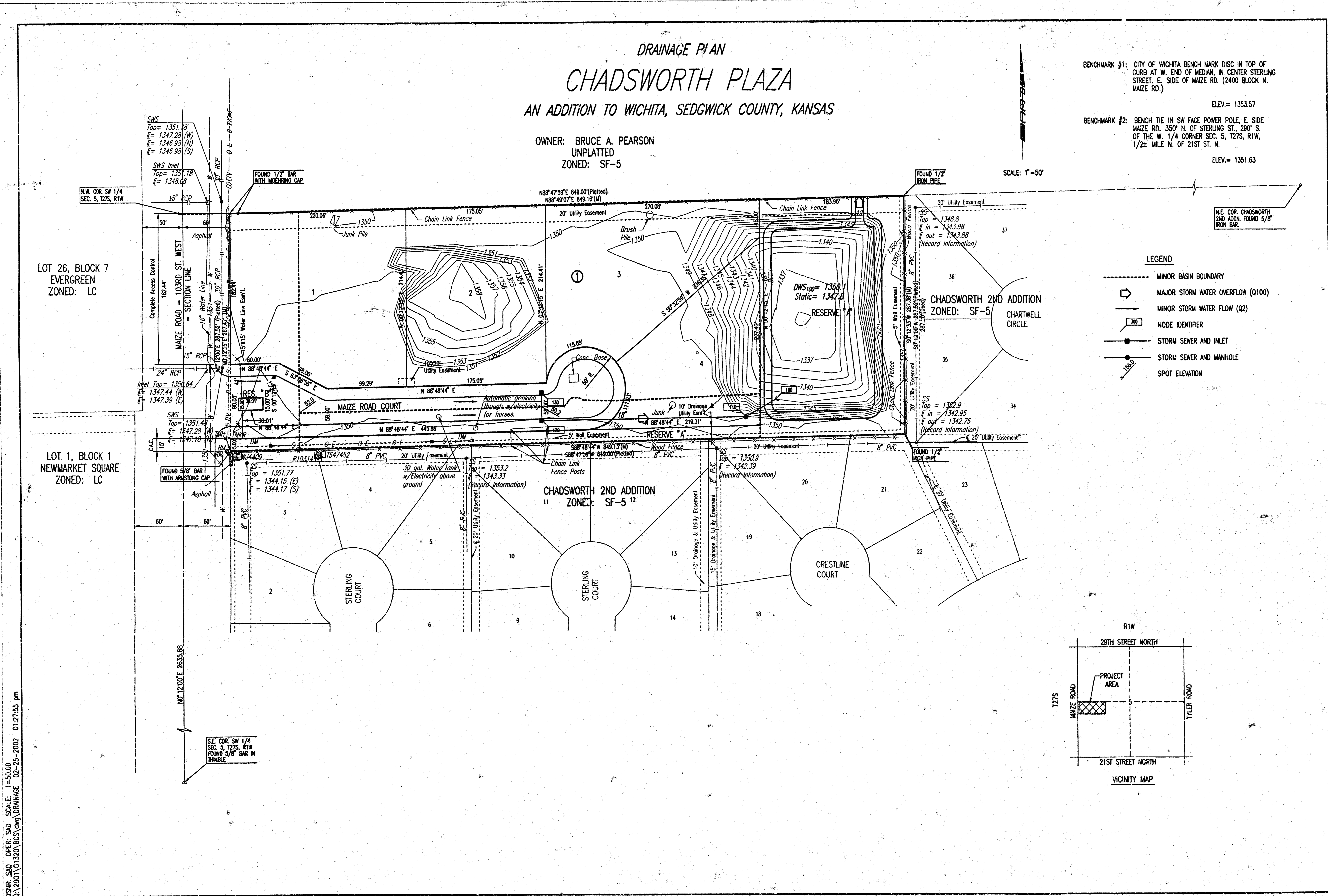
BENCHMARK #2: BENCH TIE IN SW FACE POWER POLE, E. SIDE MAIZE RD. 350' N. OF STERLING ST., 290' S. OF THE W. 1/4 CORNER SEC. 5, T27S, R1W, 1/2 MILE N. OF 21ST ST. N.

ELEV. = 1351.63

SCALE: 1"=50'

**LEGEND**

- MINOR BASIN BOUNDARY
- MAJOR STORM WATER OVERFLOW (Q100)
- MINOR STORM WATER FLOW (Q2)
- 300 NODE IDENTIFIER
- STORM SEWER AND INLET
- STORM SEWER AND MANHOLE
- 1350 SPOT ELEVATION



DSNR, SLD OPER. SLD SCALE: 1"=50.00  
 Q:\2001\01320\BOS\DWG\DRAINAGE 02-25-2002 01:27:55 pm