

DRAINAGE PLAN CHAPPELLE ADDITION WICHITA, SEDGWICK COUNTY, KANSAS

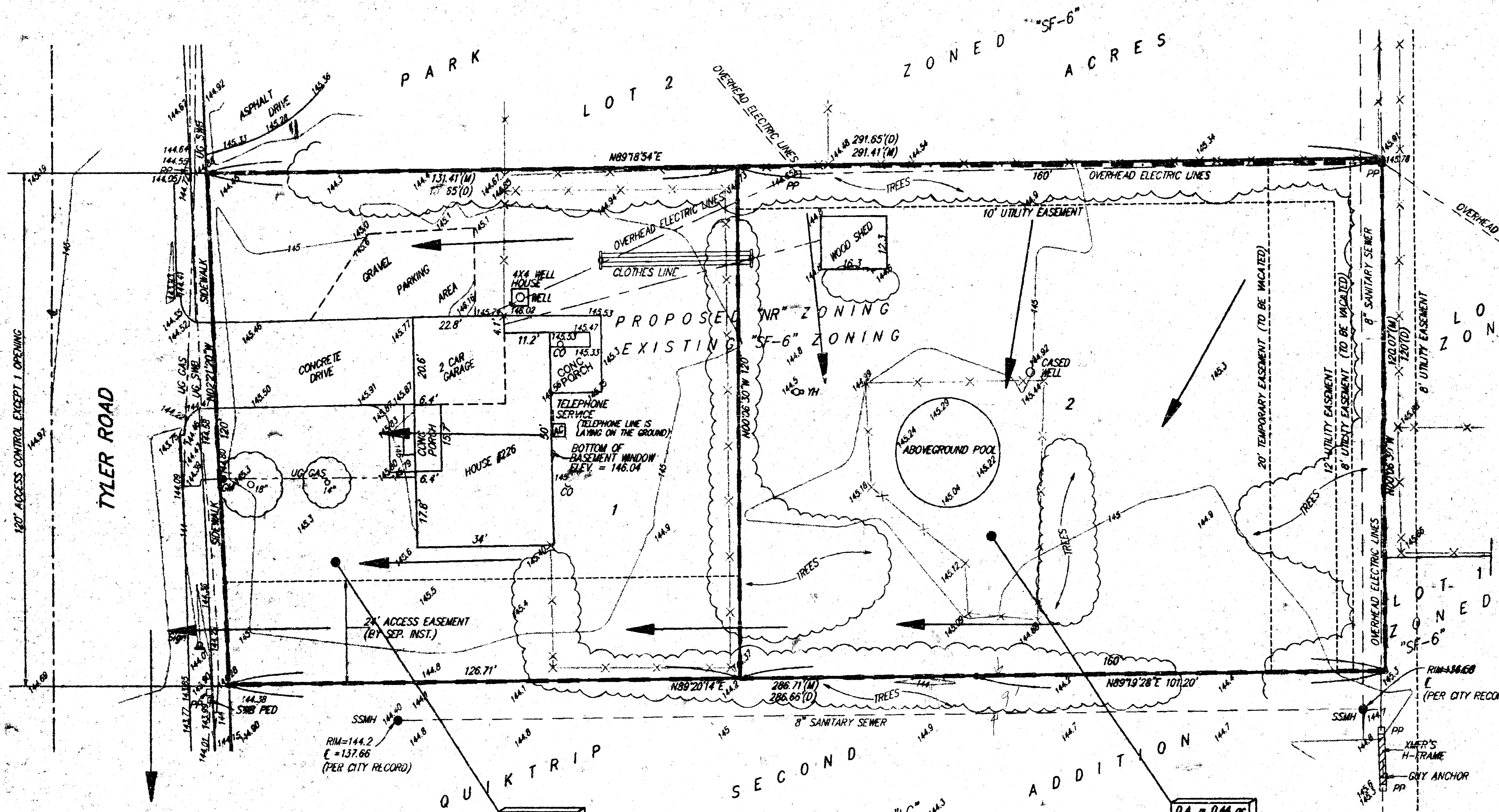
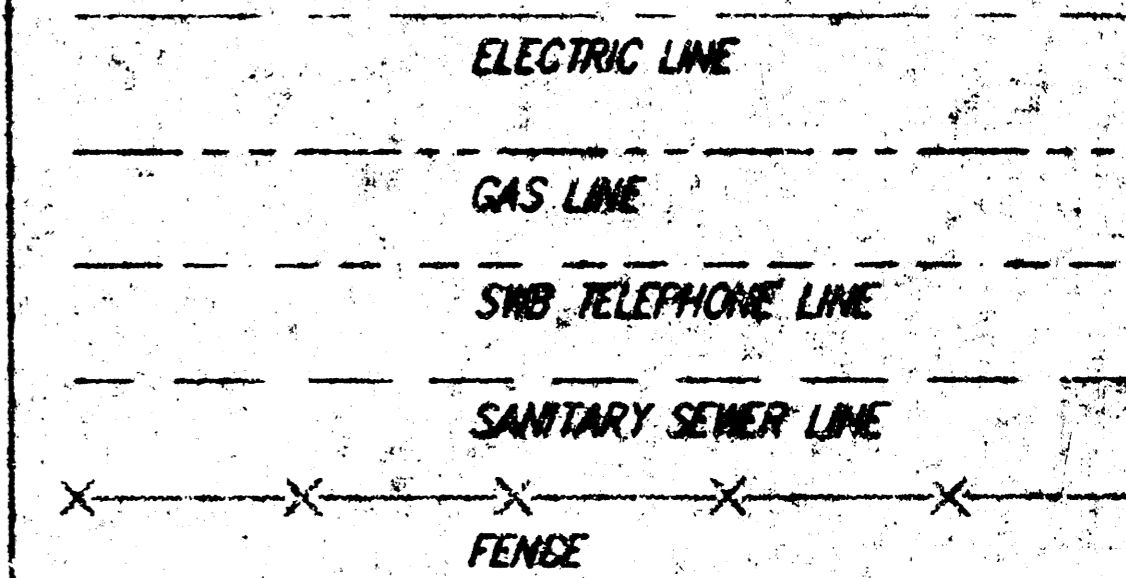


(M) = MEASURED
(D) = DESCRIBED

● = #4 REBAR W/ "BAUGHMAN" CAP (SET)

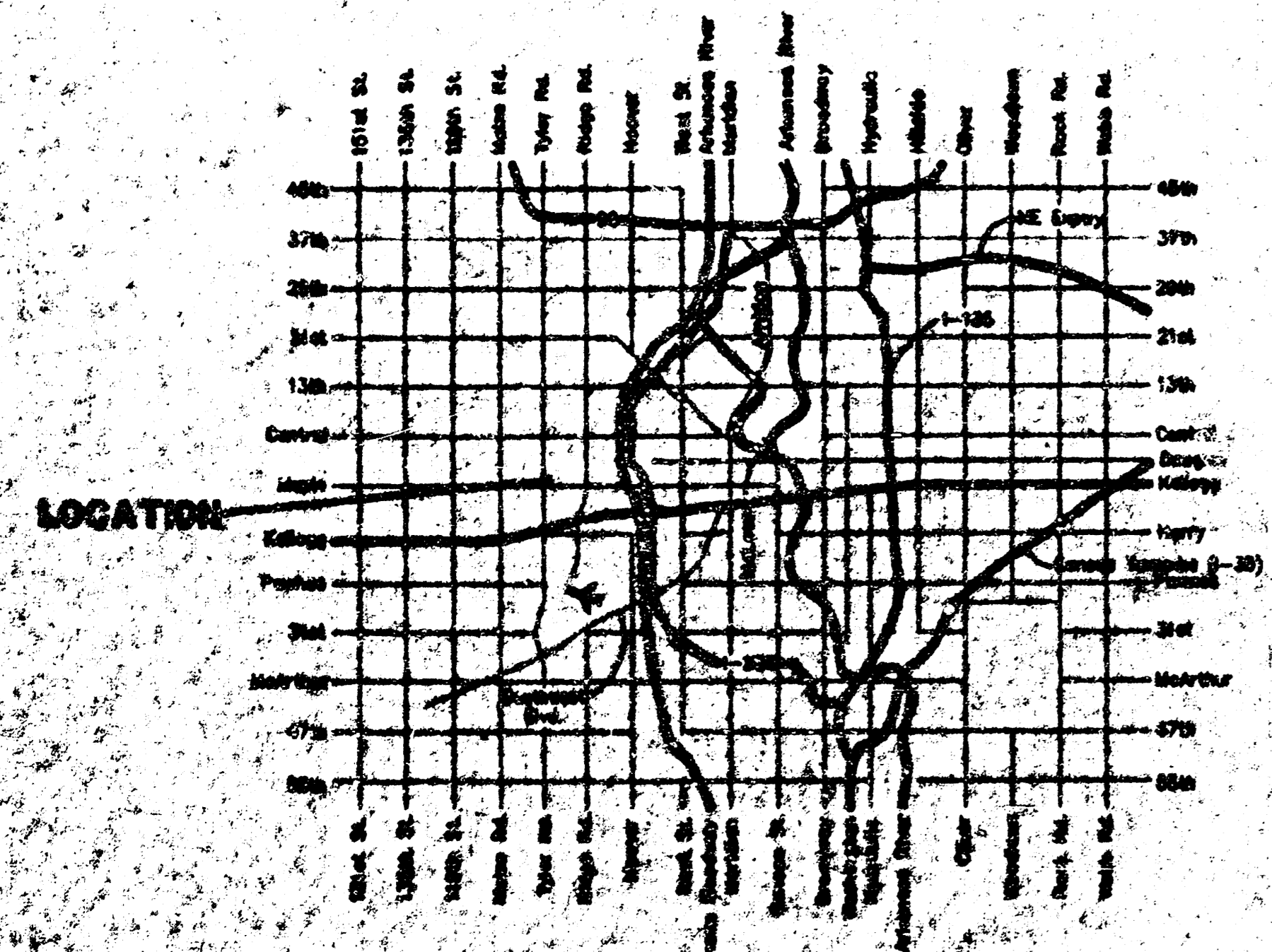
LEGEND

- CO = Cleanout
- PP = Power Pole
- ◇ Sign = Sign
- SSMH = Sanitary Sewer Manhole
- SMB Pod = Southwestern Bell Pedestal
- XFMR = Transformer
- ⊕ YH = Yard Hydrant (Spigot)
- GM = Gas Meter



D.A. = 0.35 ac
T_c = 0.40
T_e = 15 min.
Q_s = 0.6 cfs
Q_m = 0.7 cfs
Q_{sw} = 1.1 cfs

D.A. = 0.44 ac
T_c = 0.85
T_e = 15 min.
Q_s = 1.4 cfs
Q_m = 1.7 cfs
Q_{sw} = 2.8 cfs



VICINITY MAP

NOTE: The proposed drainage plan provided herein is a generally defined plan to follow for design. It is recognized and assumed that upon the final design of street and storm sewer improvements within this plot that the designer will modify or alter the general drainage plan as necessary in order to implement the installation of the improvements to obtain the most economical design and construction possible.

20 OCT 1988

BAUGHMAN COMPANY P.A.
ENGINEERING, SURVEYING & PLANNING
115-208-7271 • 118 S. MAIN ST. WICHITA, KANSAS 67202