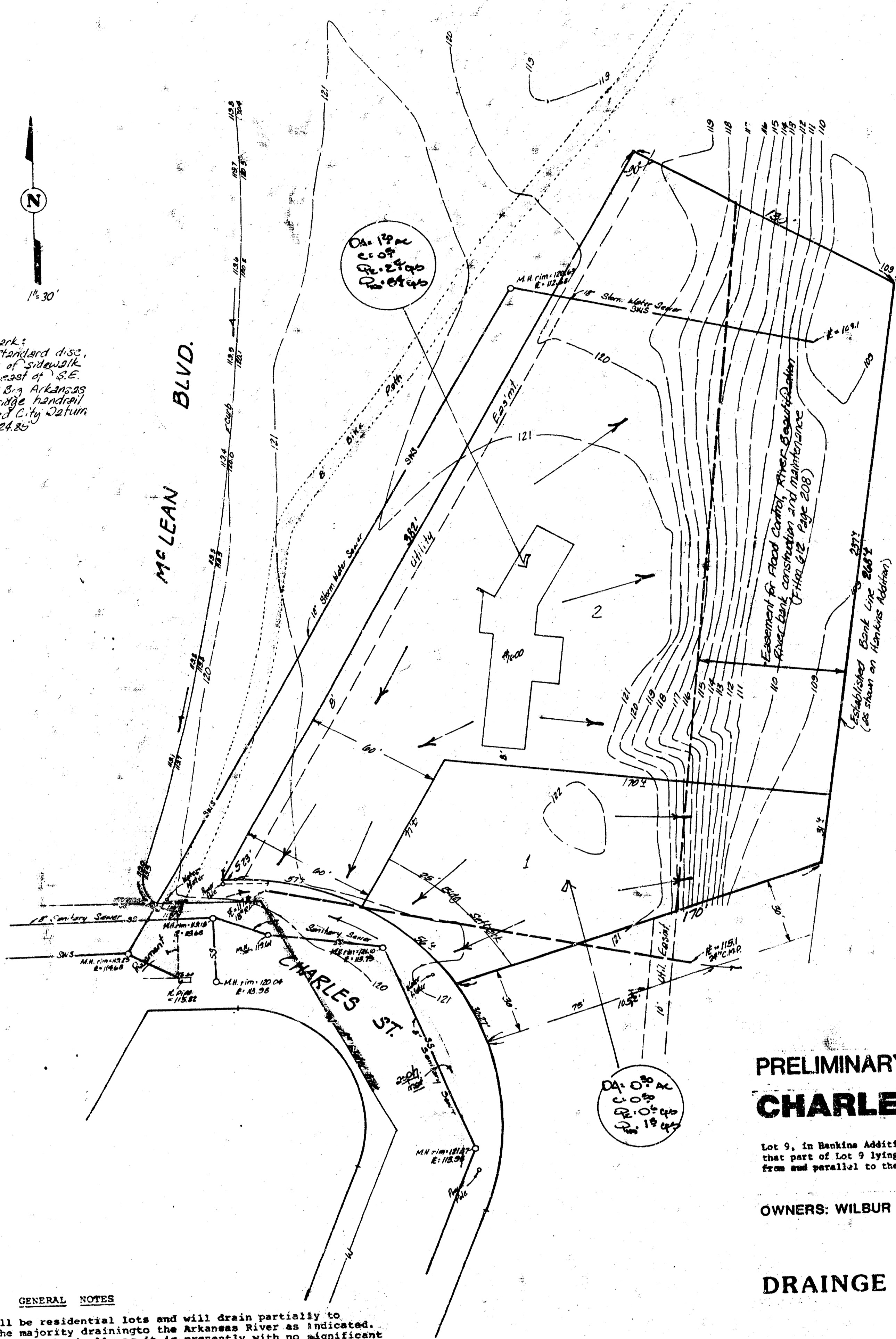
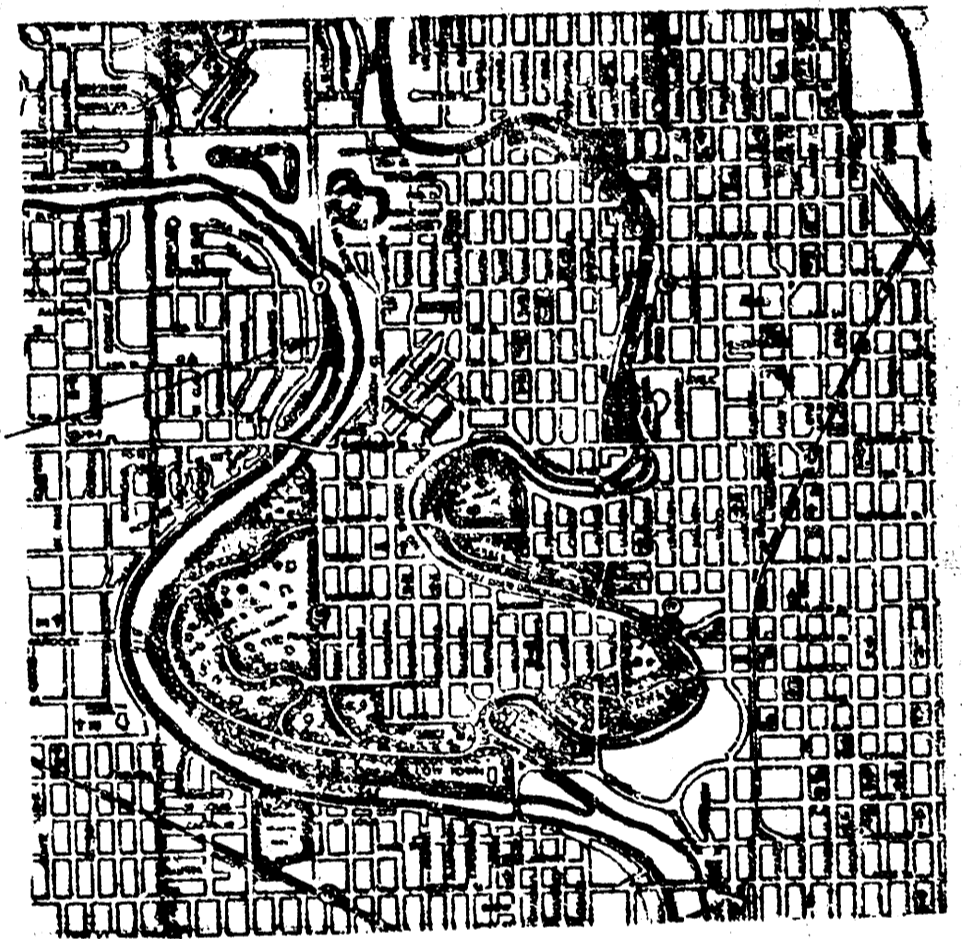


CHARLES COURT ADDITION  
(Drainage)

1" = 30'  
N  
Bench Marks  
U.S.G.S. Standard Ass.  
10' south of sidewalk  
and 85' east of S.E.  
end of S.W. Arkansas  
River bridge structure  
Calculated C.M. Datum  
Elev = 184.80



ARKANSAS RIVER



### PRELIMINARY PLAT CHARLES COURT ADDITION

Lot 9, in Bankers Addition to Wichita, Sedgewick County, Kansas; except that part of Lot 9 lying Southeastern of a line drawn 30 feet Northwesterly from and parallel to the Southeastern line of said Lot 9.

Received  
5-8-86

OWNERS: WILBUR F. KRUSE and MARY T. KRUSE

### DRAINAGE & UTILITY PLAN

**GENERAL NOTES**  
The 2 lots will be residential lots and will drain partially to Charles St. with the majority draining to the Arkansas River as indicated. The riverbank will remain basically as it is presently with no significant grading to be done within the floodway area. No runoff from these lots into the floodway area will be concentrated at any one point to prevent erosion. The utilities to service these two lots are indicated adjacent to the lots.

**BAUGHMAN COMPANY, P.A.**  
SURVEYING & ENGINEERING  
316282-7271 • 300 LAURA • WICHITA, KANSAS 67211

MAY 23 1986