

GRADE LOT TO DRAIN TO PROPOSED
INLETS SHOWN.

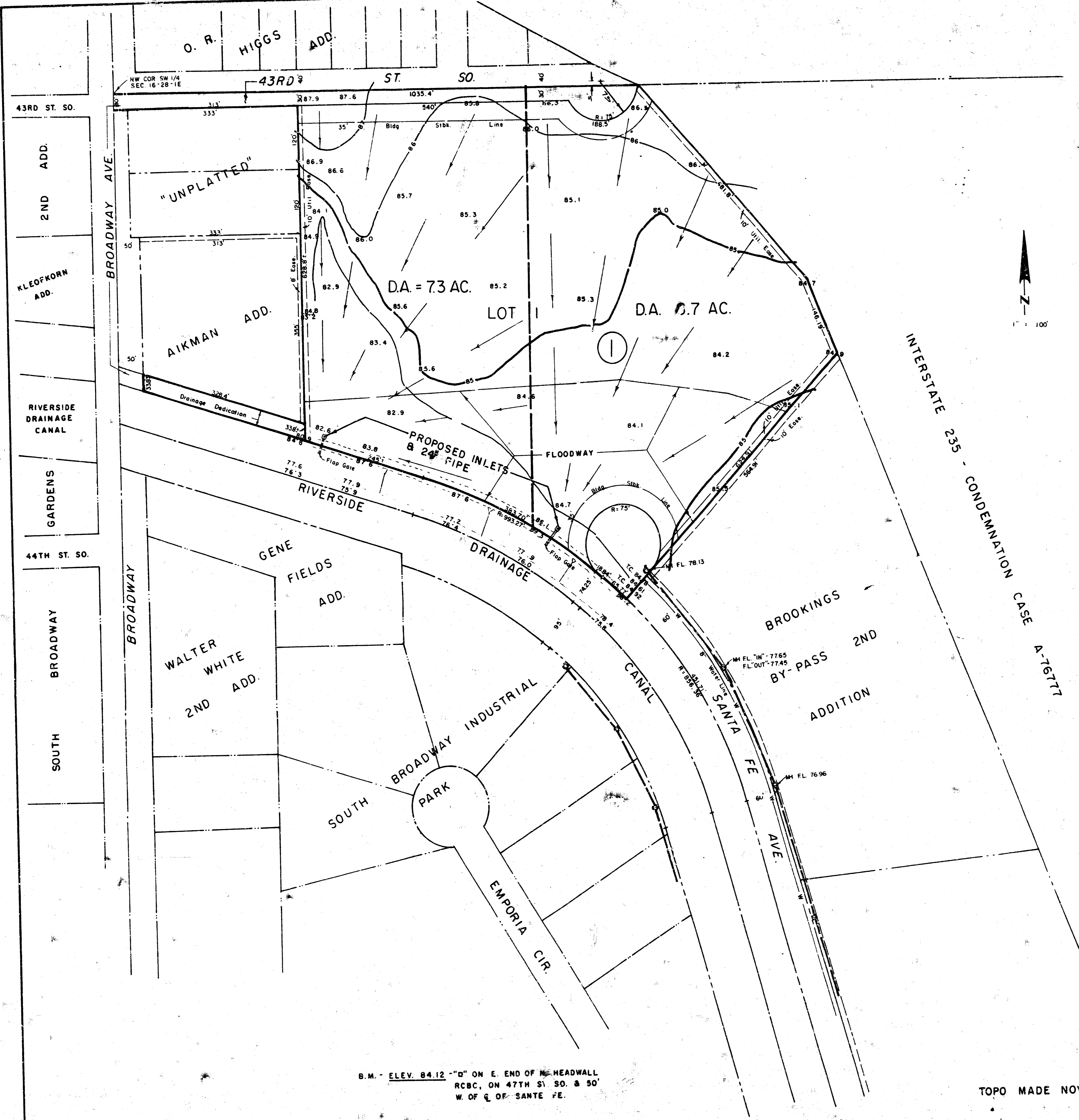
RIVERSIDE DRAINAGE DISTRICT & THE CITY
OF WICHITA TO APPROVE PLANS PRIOR TO
CONSTRUCTION OF INLETS, PIPE, AND FLAP GATES.

PRELIMINARY PLAT

CHEROKEE INDUSTRIAL PARK

GRADE PLAN

FOR: MID-STATES MANAGEMENT-
DEVELOPMENT CO.
510 N. TOPEKA
WICHITA, KS.



INTERSTATE 235 - CONDEMNATION CASE A-76777

B.M. - ELEV. 84.12 - "D" ON E. END OF HEADWALL
R.C.B.C. ON 47TH ST. SO. & 50'
W. OF E. OF SANTE FE.

TOPO MADE NOVEMBER 19, 1984

LOWELL D. HIGH, L.S.
1542 S. ST. FRANCIS

**FILMED FROM THE BEST
AVAILABLE COPY**