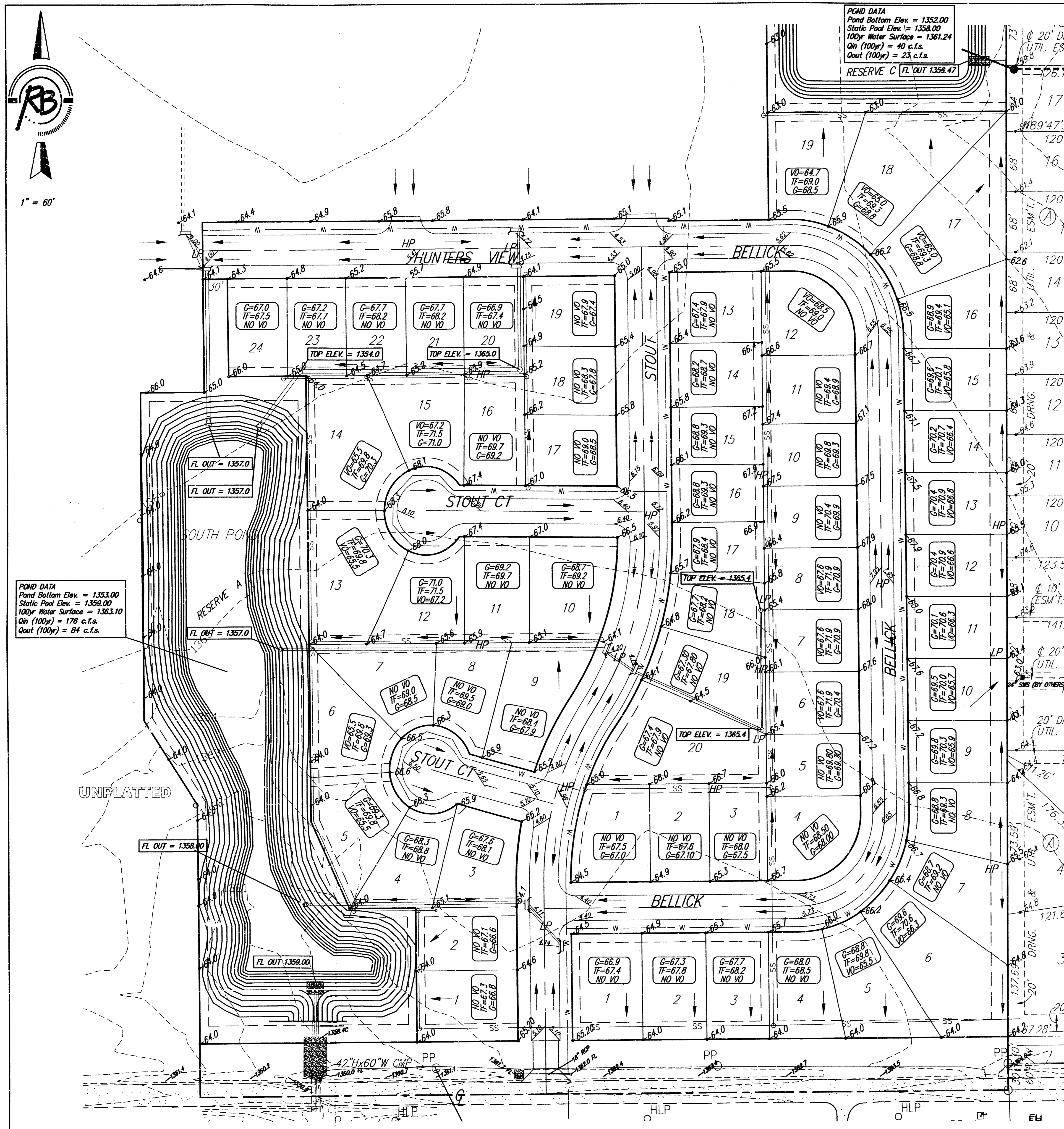


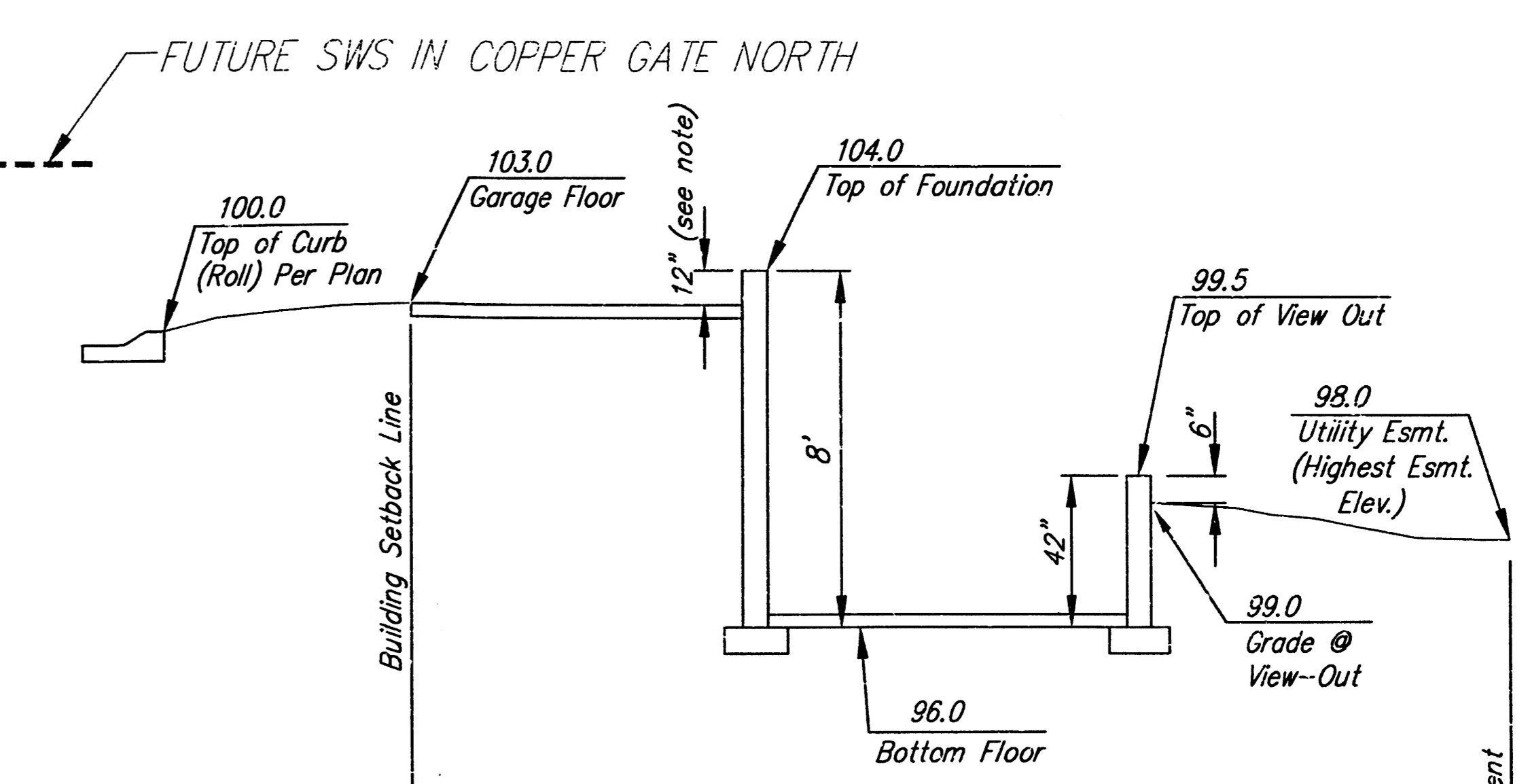


1" = 60'



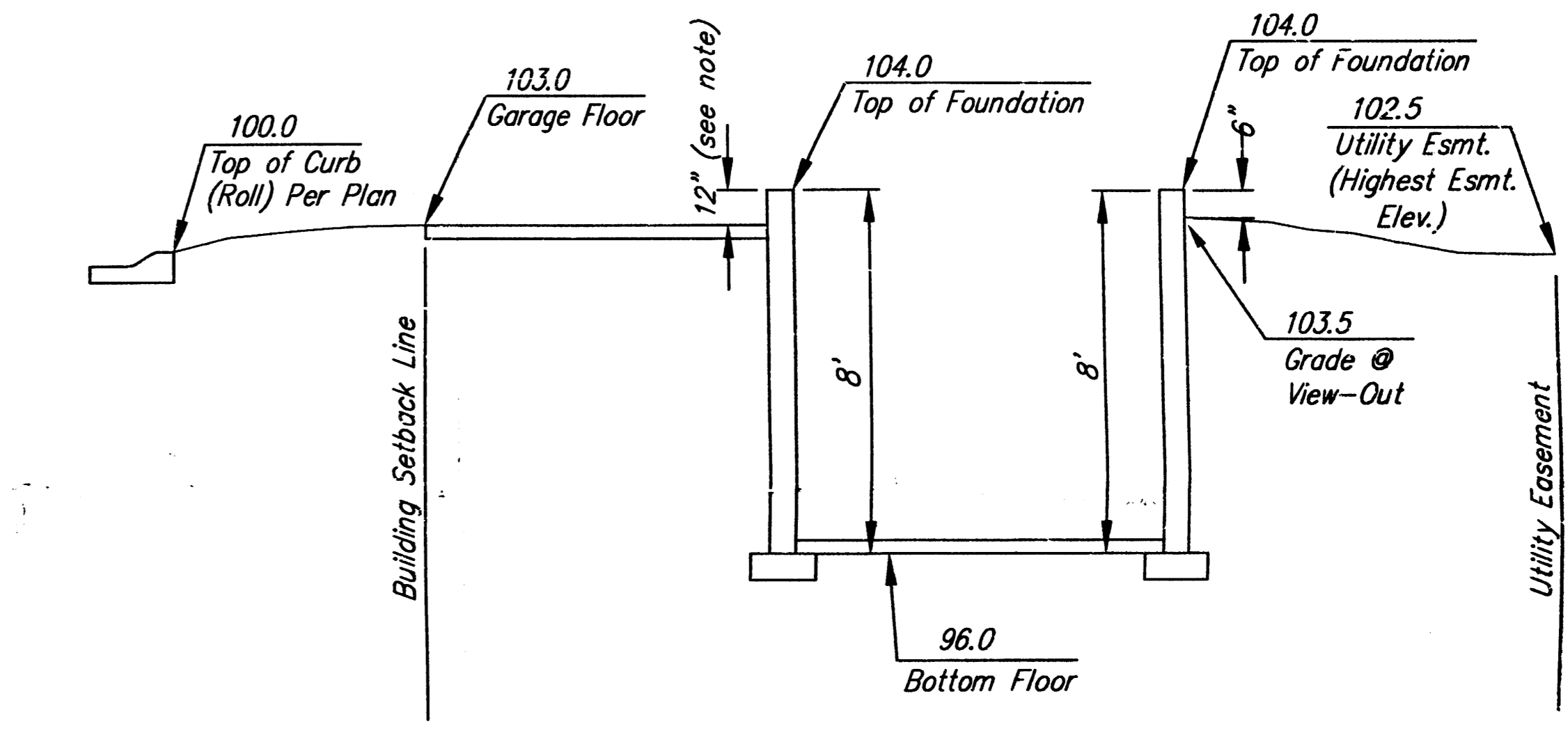
POND DATA
Pond Bottom Elev. = 1352.00
Static Pool Elev. = 1358.00
100yr Water Surface = 1361.24
On (100yr) = 40 c.f.s.
Out (100yr) = 23 c.f.s.
RESERVE C FL OUT 1358.47

POND DATA
Pond Bottom Elev. = 1353.00
Static Pool Elev. = 1359.00
100yr Water Surface = 1363.10
On (100yr) = 178 c.f.s.
Out (100yr) = 84 c.f.s.
FL OUT = 1357.0



Section Through Typical View-Out Lot

* Varies (Check Individual Lot)



Section Through Typical Full Basement

* Varies (Check Individual Lot)

APPROVED
DRAINAGE PLAN

LEGEND

- C=69.5 Proposed Corner Grade
- V=70.0 Proposed Viewout Elevation
- F=70.0 Proposed Garage Floor
- VO=65.7 Proposed Top of Foundation

BENCH MARK: COW BENCHMARK AT THE SOUTHWEST CORNER OF INTERSECTION OF 135TH ST. W. AND 13TH ST. N., EAST SIDE OF CONC. BASE FOR HLP 30' ± S. OF CENTER LINE AND 35' ± W. OF CENTER LINE ELEV.=1355.65 (M.S.L.) NGVD

ON SITE BENCH MARK: R.R. SPIKE ON NORTH FACE OF HIGHLINE POWER POLE 131 FEET WEST AND 28 FEET SOUTH OF THE S.E. CORNER, W/2, SE1/4, SEC. 11, T27S, R2W ELEV.=1365.16 (M.S.L.) NGVD

NOTES:
THE VO OPENINGS INDICATED ON THIS PLAN ARE THE LOWEST RECOMMENDED OPENING FOR THE LOTS. A STAMPED SITE PLAN SHOULD BE PREPARED IF LOWER GRADES ARE PROPOSED.



SUBMITTED 12-17-05

CHERYL'S HOLLOW ADDITION GRADING PLAN WICHITA, KANSAS

Ruggles & Bohm, P.A.
Engineering, Surveying, Land Planning

924 North Main
Wichita, Kansas 67203
www.rbkans.com

(316) 264-8008
(316) 264-4621 fax
E-mail: info@rbkans.com

DESIGN	KWL/CMB	1 OF 1	
DRAWN	KWL		
REVIEW			
UTILITY			
DRAWING FILE	Phase 1 Grading Plan	PROJECT NUMBER	Nov. 7, 2005
		Proj. No.	

PLAT SHAD AND PLOT 15 DECEMBER 2005